

**10.5 APPENDIX: NUMBER OF HOPPING CHANNELS****Test Result**

TestMode	Antenna	Channel	Result[Num]	Limit[Num]	Verdict
DH1	Ant1	Hop	79	$\geq 15$	PASS
2DH1	Ant1	Hop	79	$\geq 15$	PASS

BlueAsia

### Test Graphs

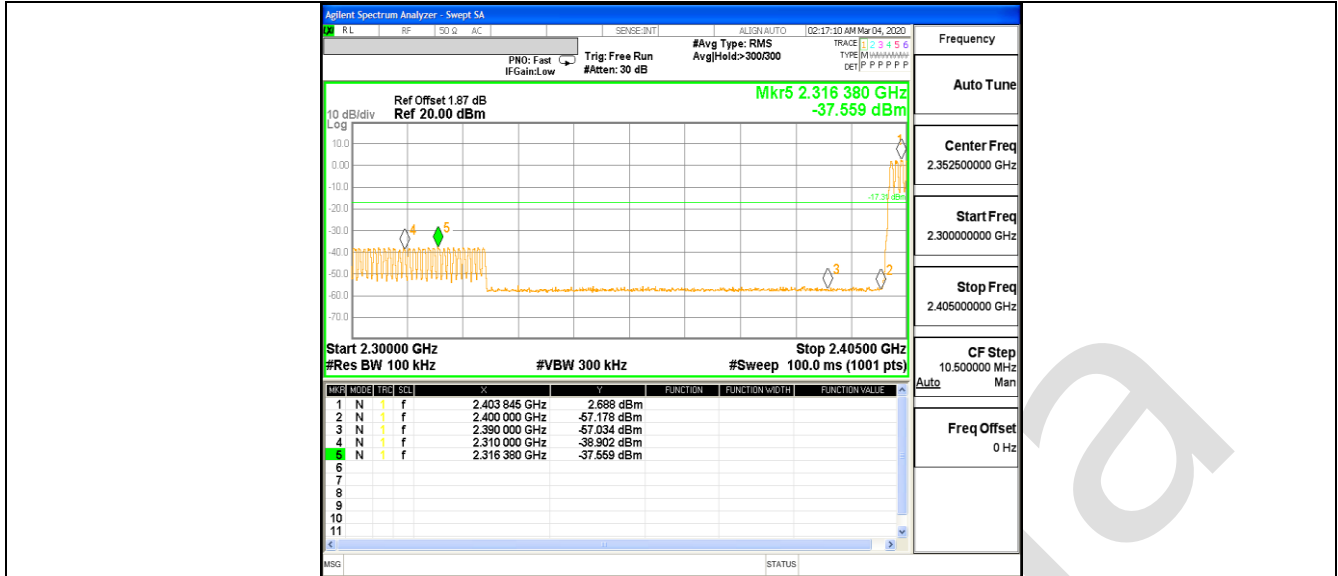


**10.6 APPENDIX: BAND EDGE MEASUREMENTS**
**Test Result**

TestMode	Antenna	ChName	Channel	RefLevel [dBm]	Result [dBm]	Limit [dBm]	Verdict
DH1	Ant1	Low	2402	2.74	-56.26	<=-17.26	PASS
		High	2480	2.17	-55.21	<=-17.84	PASS
		Low	Hop_2402	2.69	-37.56	-17.31	PASS
		High	Hop_2480	2.29	-54.48	-17.71	PASS
2DH1	Ant1	Low	2402	2.76	-54.42	<=-17.24	PASS
		High	2480	2.19	-54.58	<=-17.81	PASS
		Low	Hop_2402	2.74	-49.83	-17.26	PASS
		High	Hop_2480	2.31	-54.17	-17.69	PASS

### Test Graphs

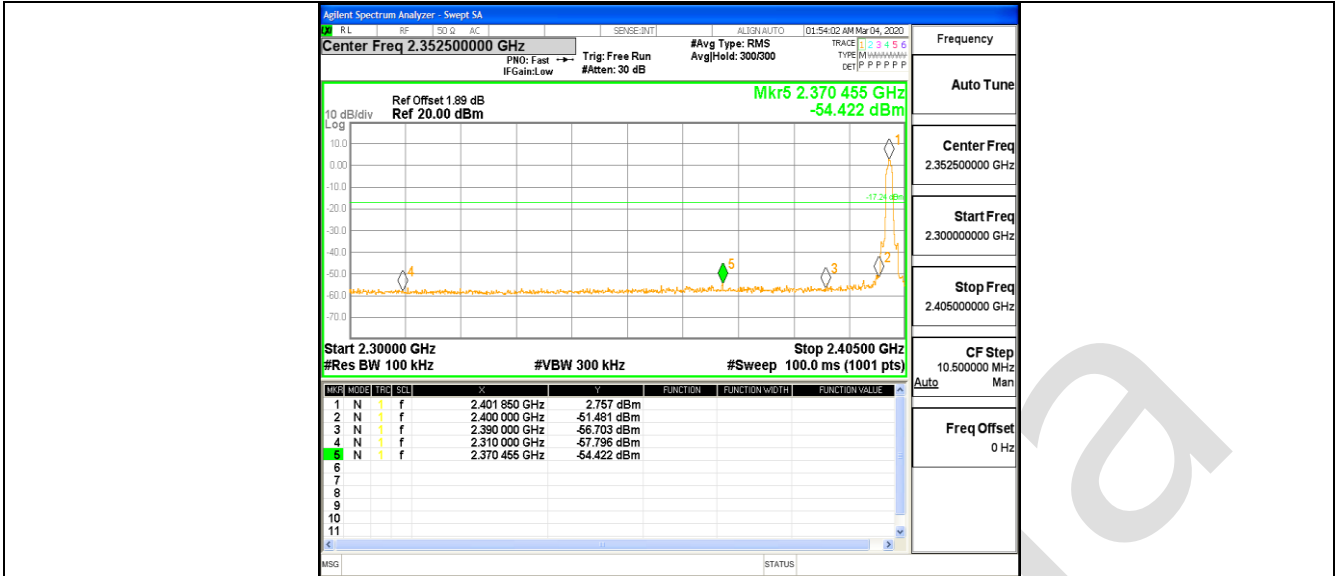




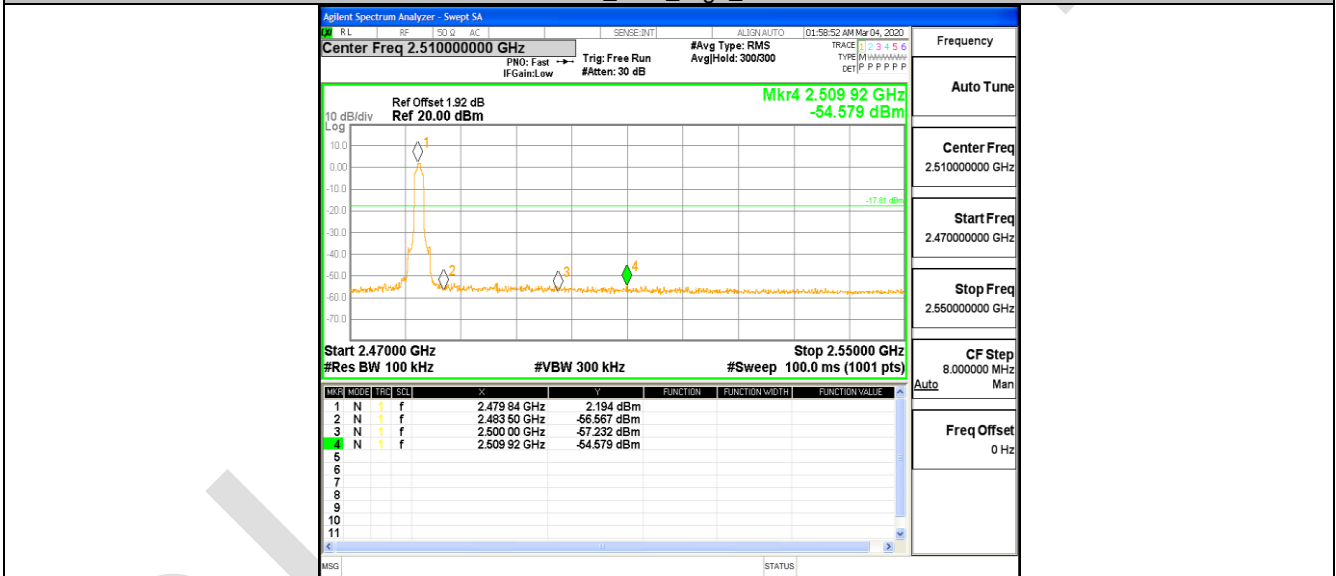
DH1\_Ant1\_High\_Hop\_2480



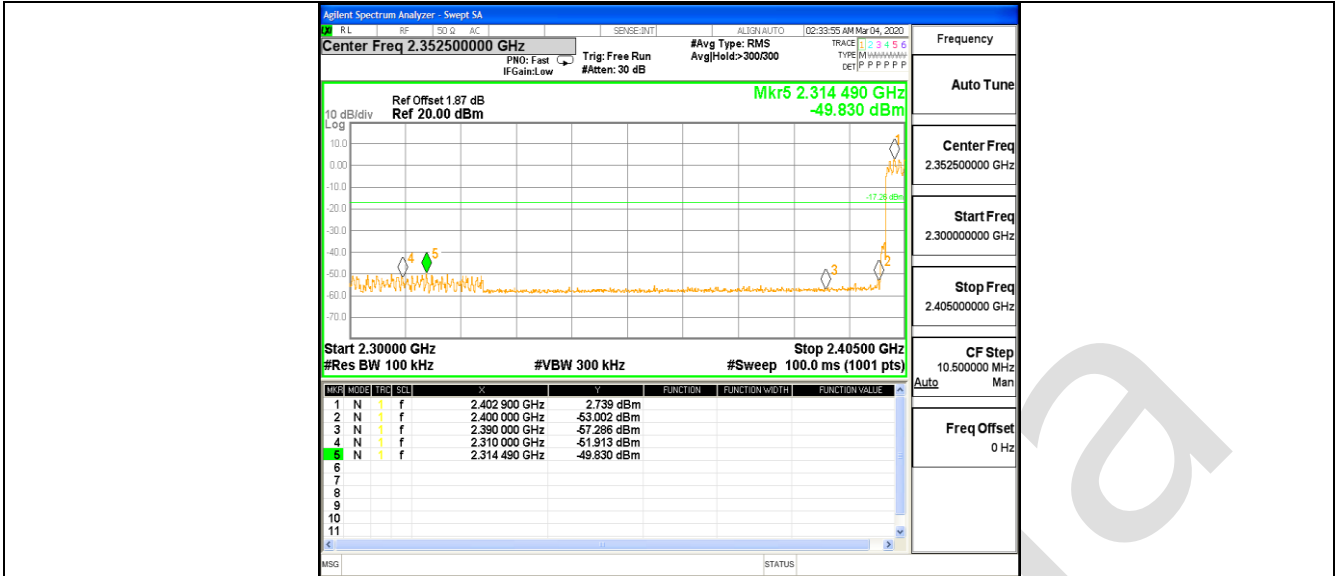
2DH1\_Ant1\_Low\_2402



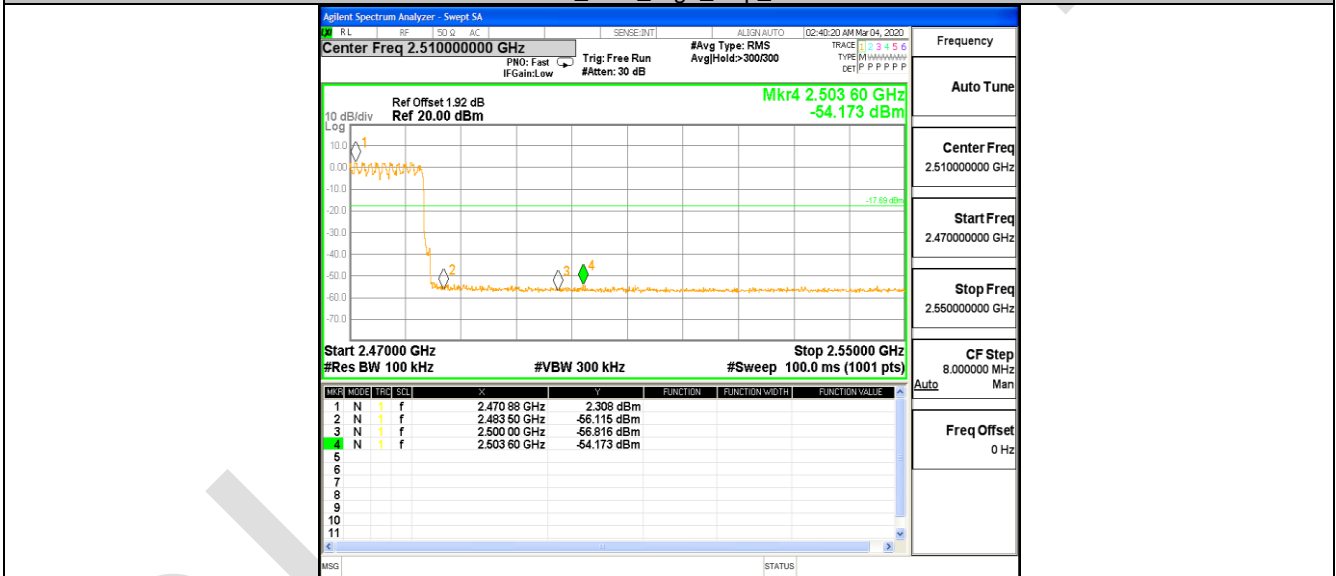
2DH1\_Ant1\_High\_2480



2DH1\_Ant1\_Low\_Hop\_2402



2DH1\_Ant1\_High\_Hop\_2480

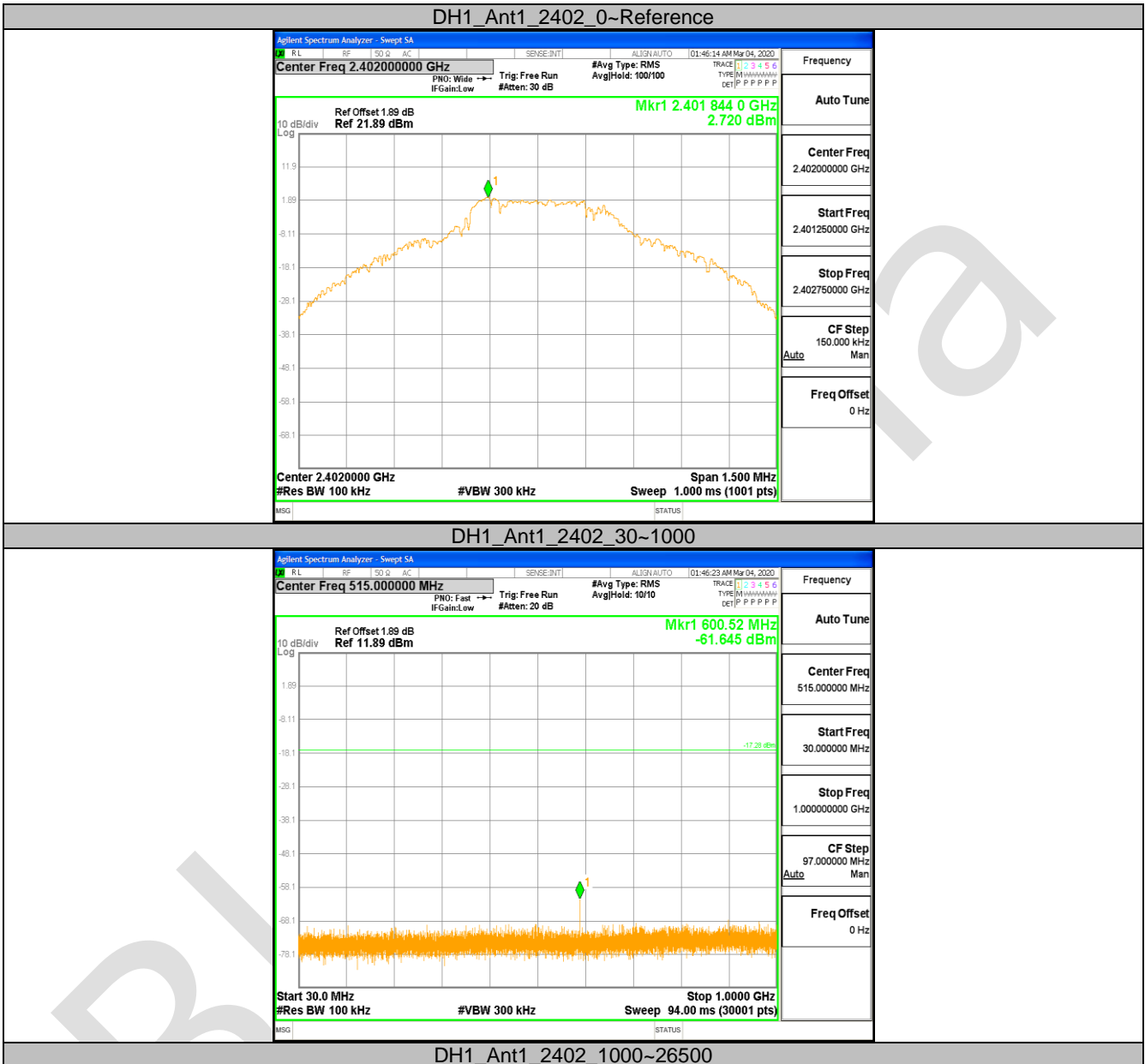


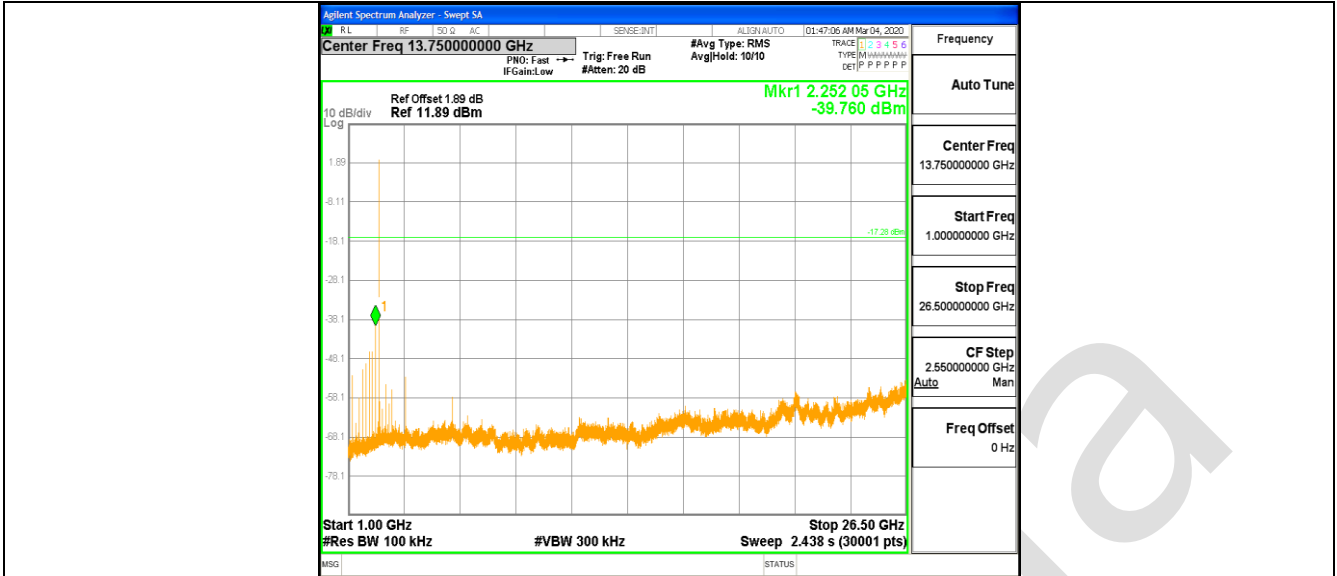
**10.7 APPENDIX: CONDUCTED SPURIOUS EMISSION**
**Test Result**

TestMode	Antenna	Channel	FreqRange [MHz]	RefLevel [dBm]	Result [dBm]	Limit [dBm]	Verdict
DH1	Ant1	2402	Reference	2.72	2.72	---	PASS
			30~1000	30~1000	-61.645	<=-17.28	PASS
			1000~26500	1000~26500	-39.76	<=-17.28	PASS
		2441	Reference	2.14	2.14	---	PASS
			30~1000	30~1000	-61.197	<=-17.858	PASS
			1000~26500	1000~26500	-39.167	<=-17.858	PASS
		2480	Reference	2.17	2.17	---	PASS
			30~1000	30~1000	-61.423	<=-17.828	PASS
			1000~26500	1000~26500	-39.17	<=-17.828	PASS
2DH1	Ant1	2402	Reference	2.77	2.77	---	PASS
			30~1000	30~1000	-67.933	<=-17.235	PASS
			1000~26500	1000~26500	-51.163	<=-17.235	PASS
		2441	Reference	2.05	2.05	---	PASS
			30~1000	30~1000	-64.079	<=-17.955	PASS
			1000~26500	1000~26500	-52.766	<=-17.955	PASS
		2480	Reference	2.08	2.08	---	PASS
			30~1000	30~1000	-66.753	<=-17.919	PASS
			1000~26500	1000~26500	-52.451	<=-17.919	PASS

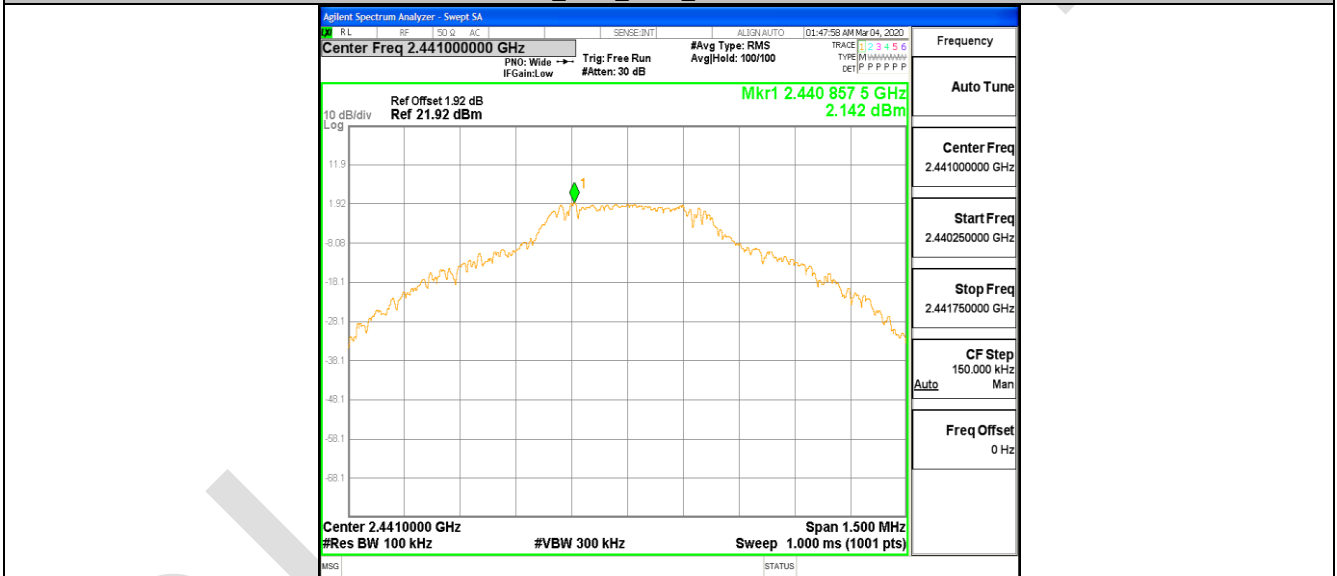


### Test Graphs

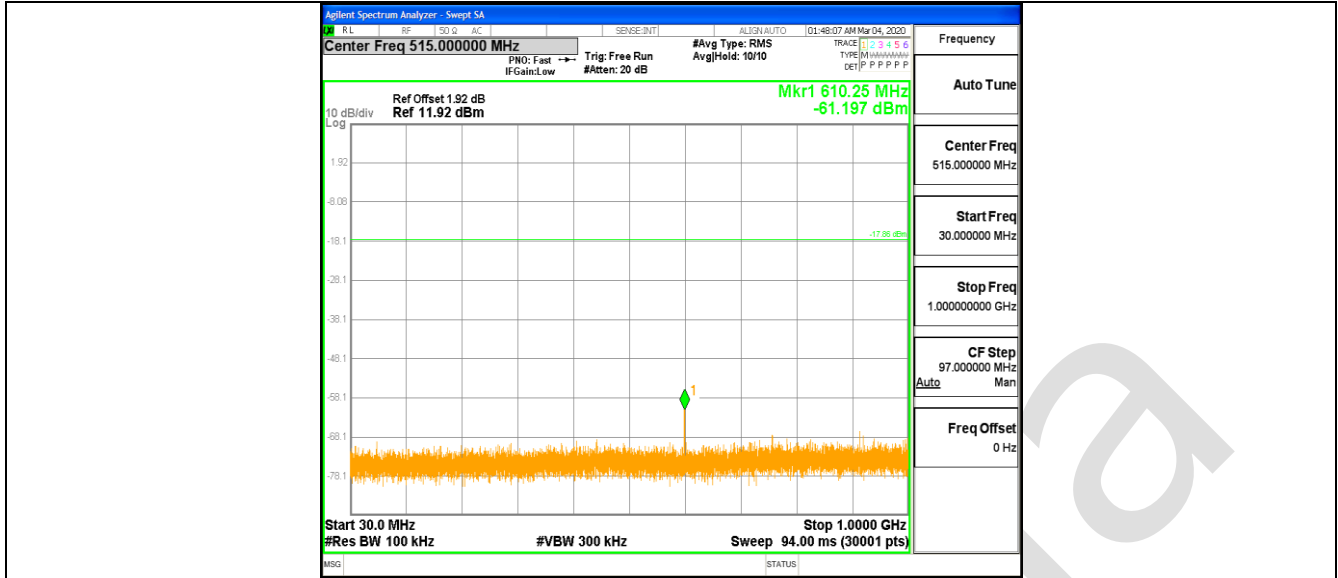




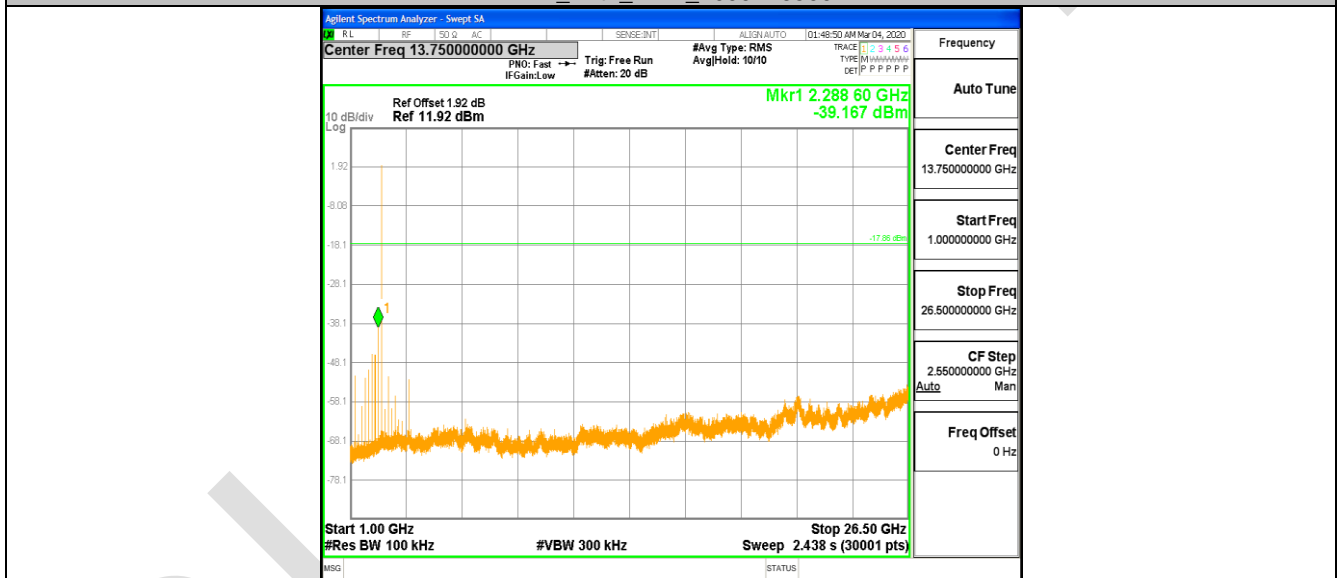
DH1\_Ant1\_2441\_0~Reference



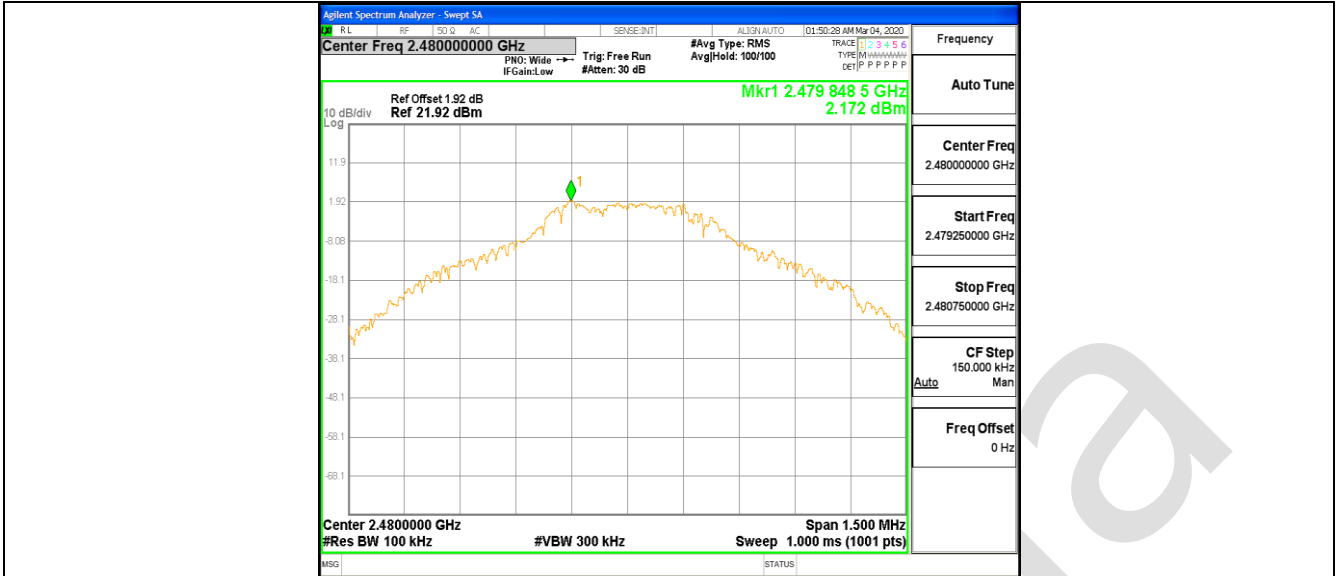
DH1\_Ant1\_2441\_30~1000



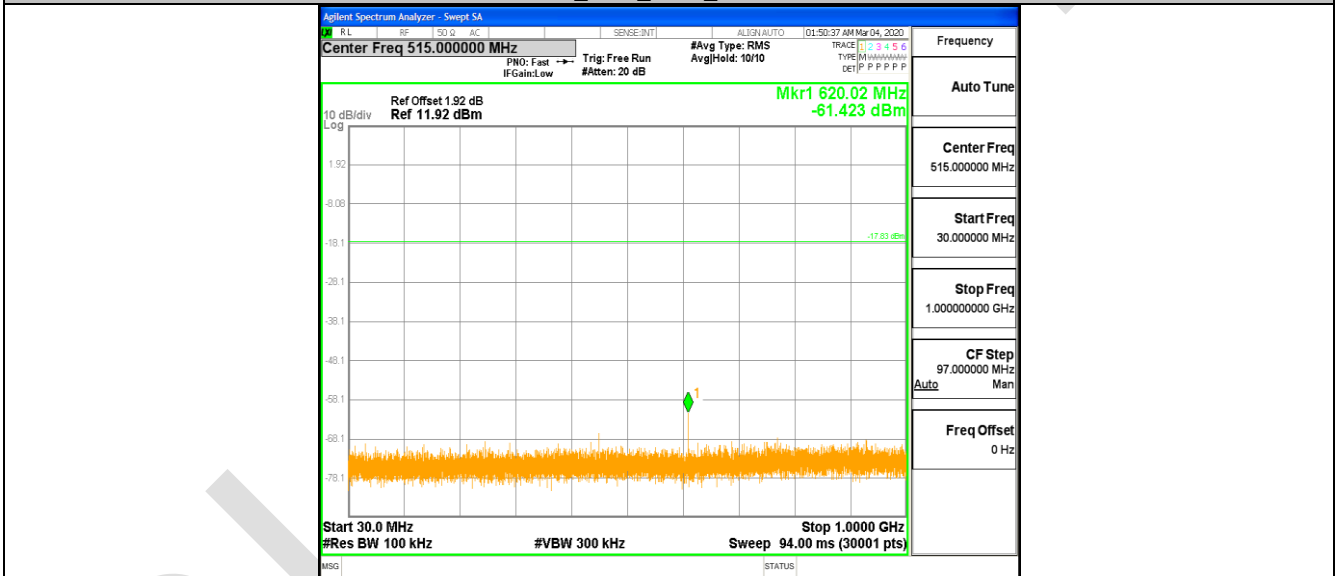
DH1\_Ant1\_2441\_1000~26500



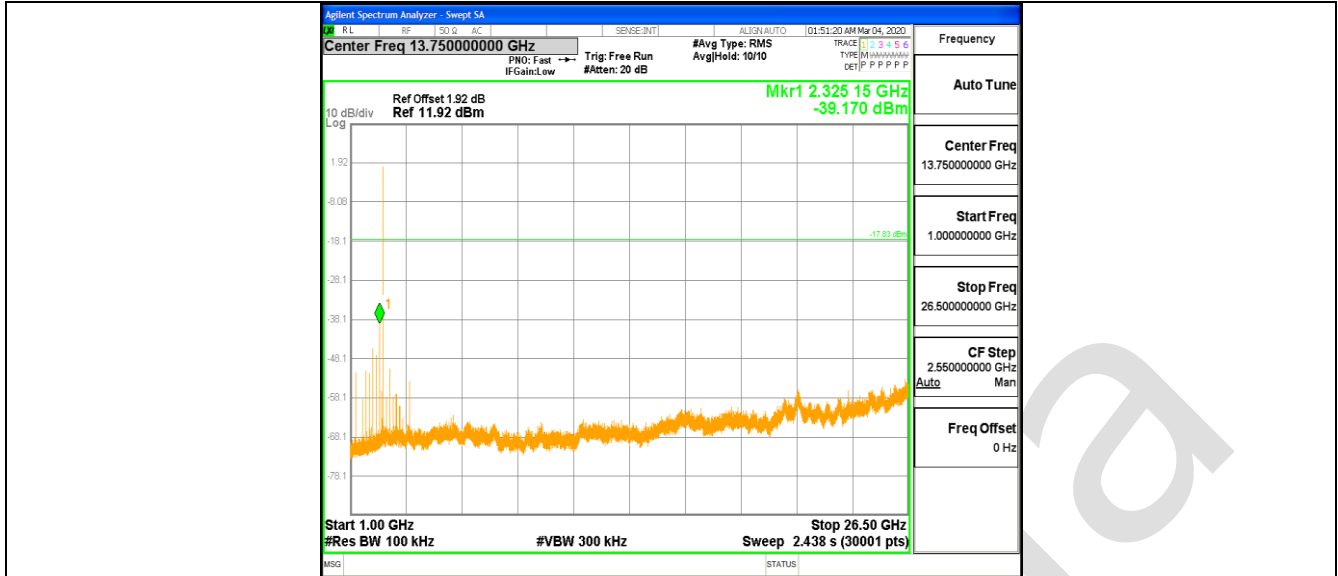
DH1\_Ant1\_2480\_0~Reference



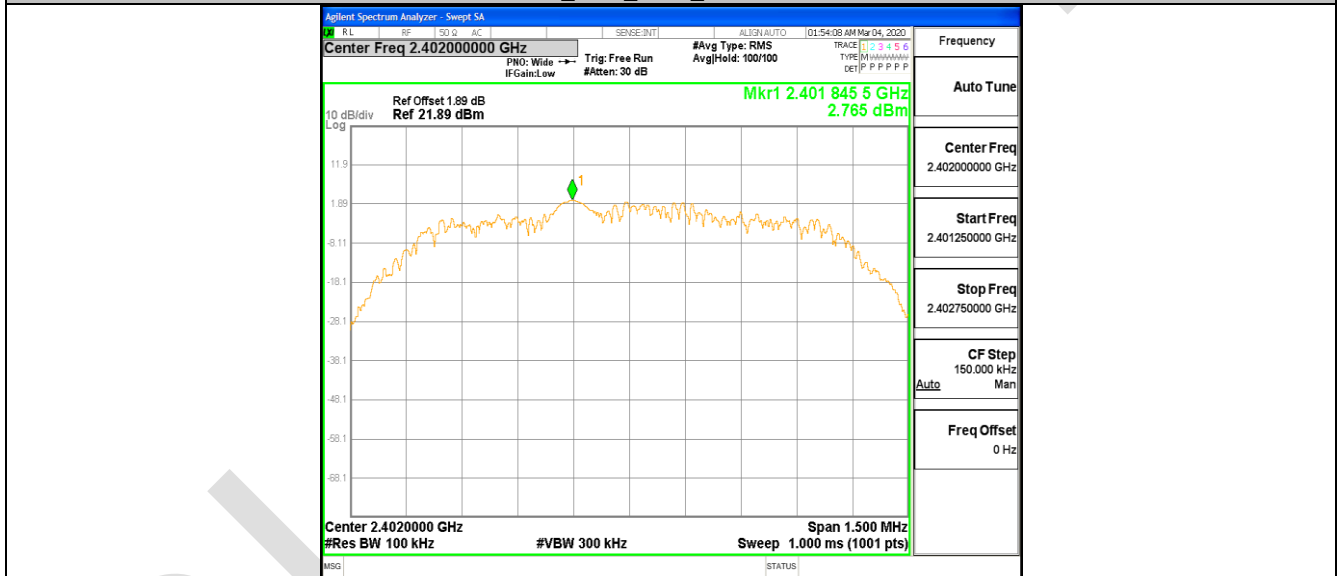
DH1\_Ant1\_2480\_30~1000



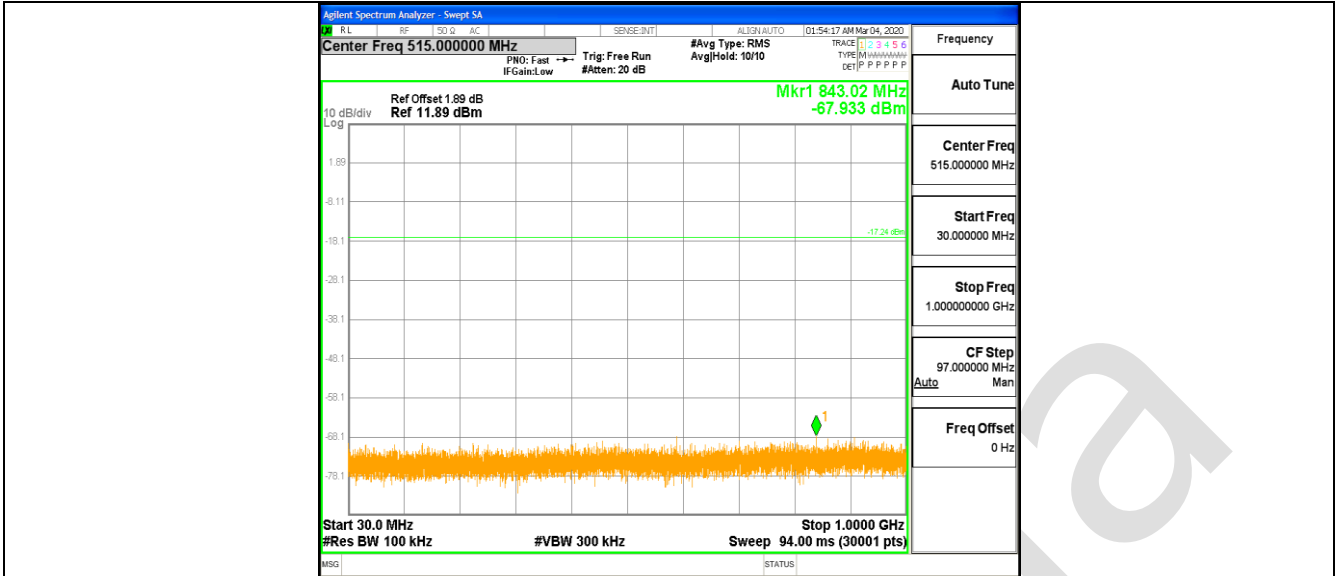
DH1\_Ant1\_2480\_1000~26500



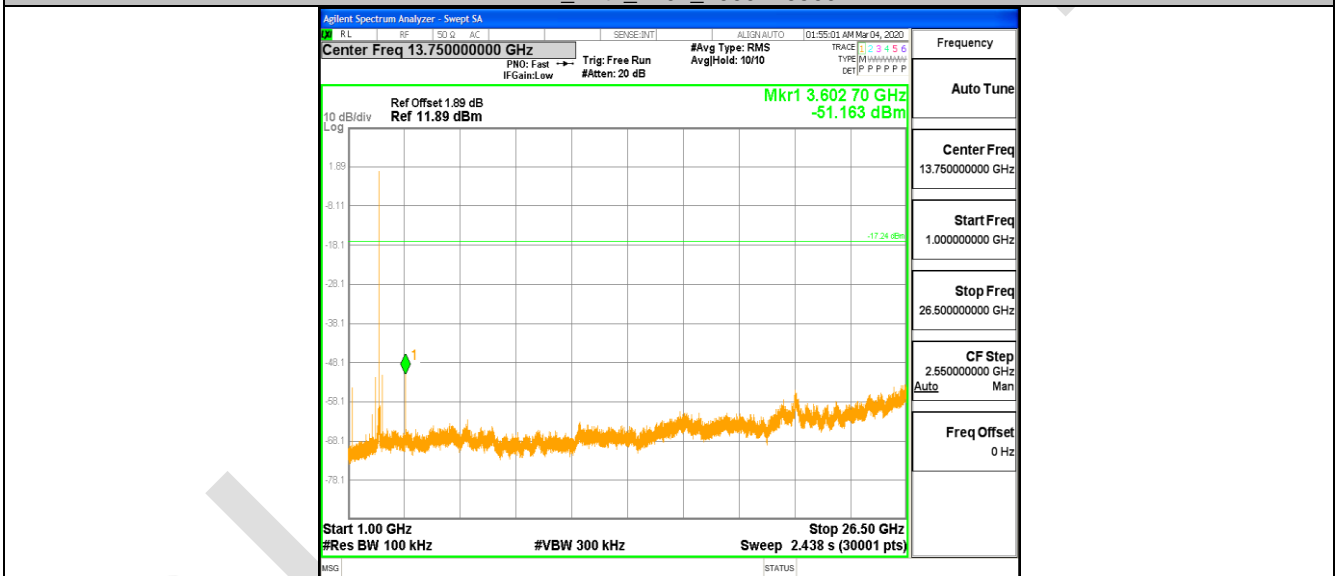
2DH1\_Ant1\_2402\_0~Reference



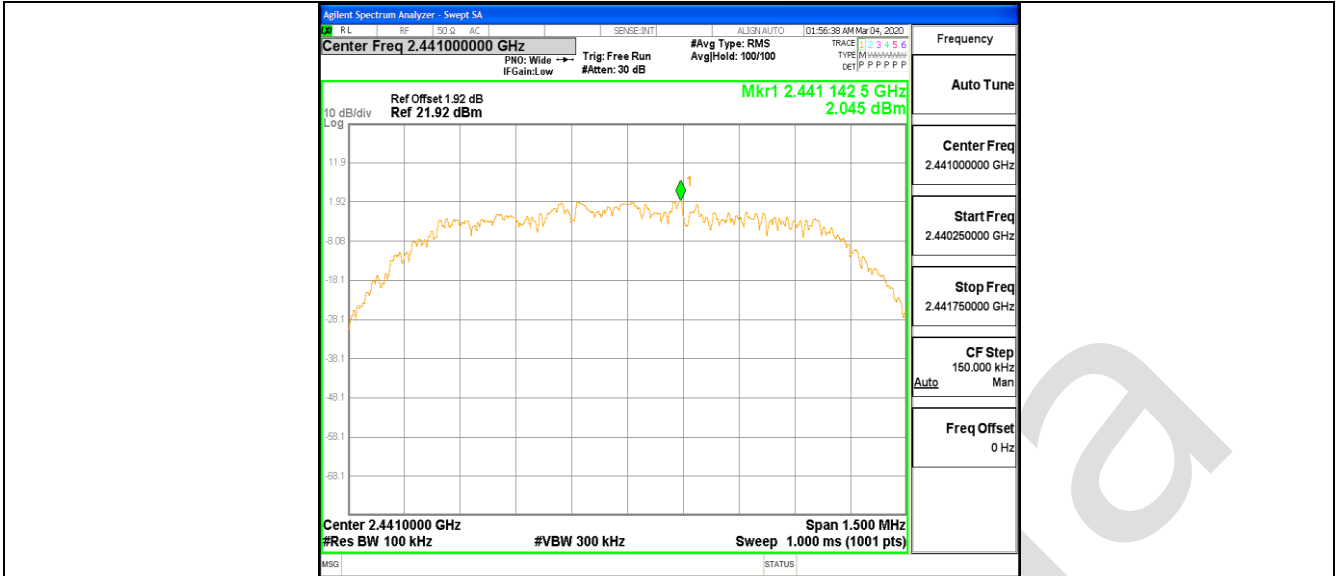
2DH1\_Ant1\_2402\_30~1000



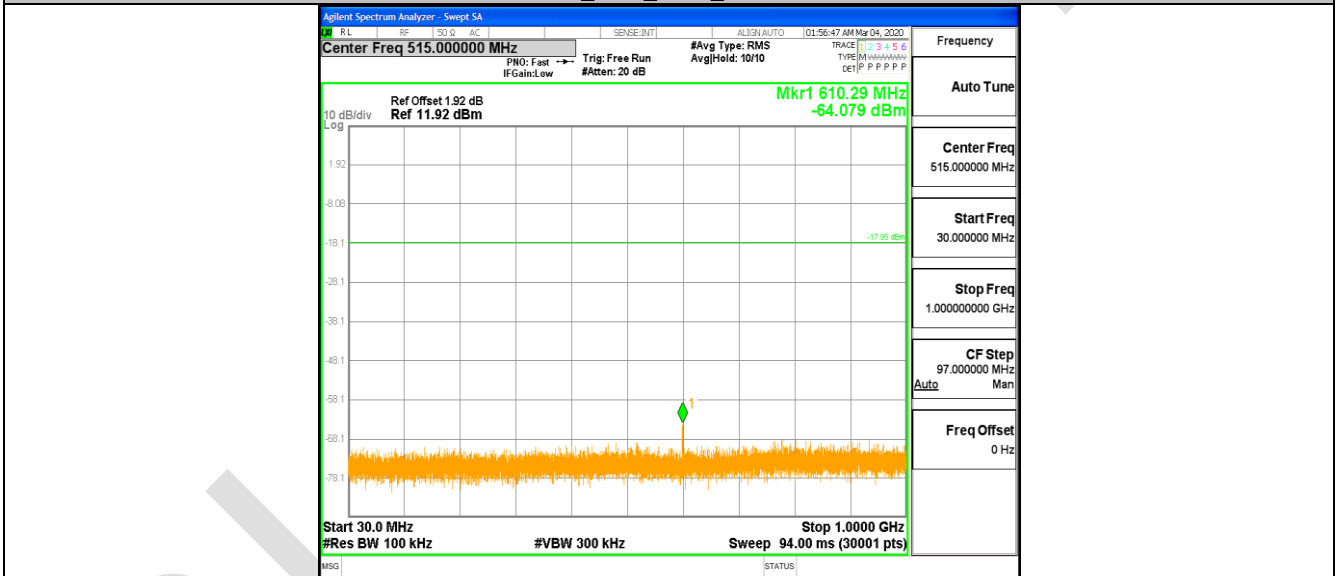
2DH1\_Ant1\_2402\_1000~26500



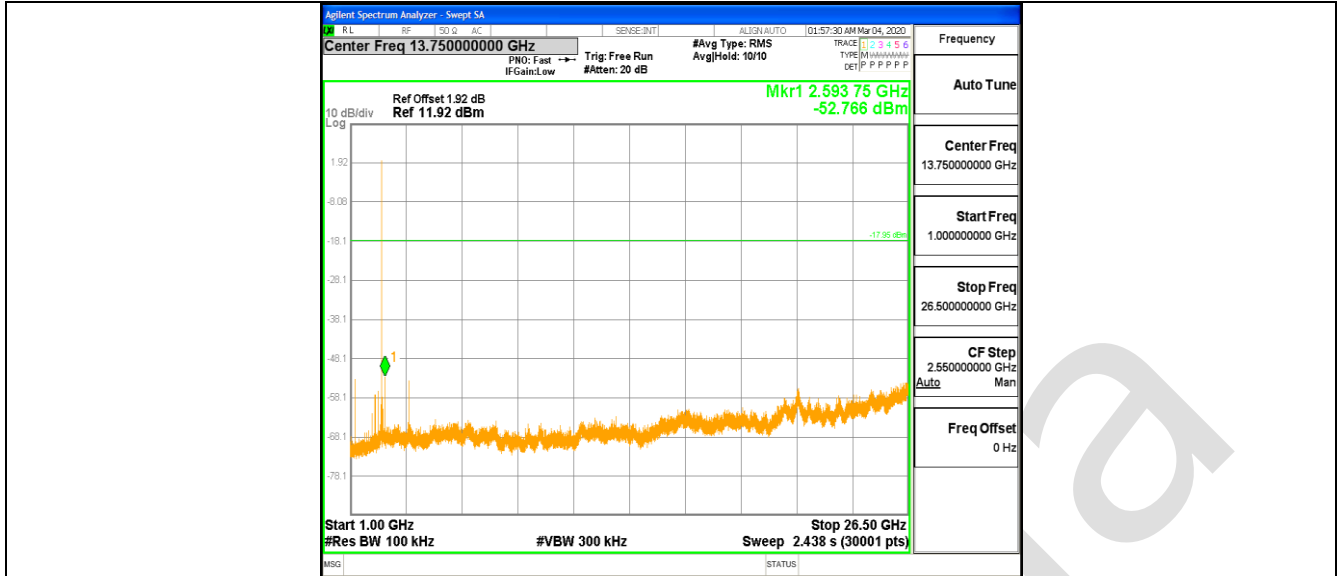
2DH1\_Ant1\_2441\_0~Reference



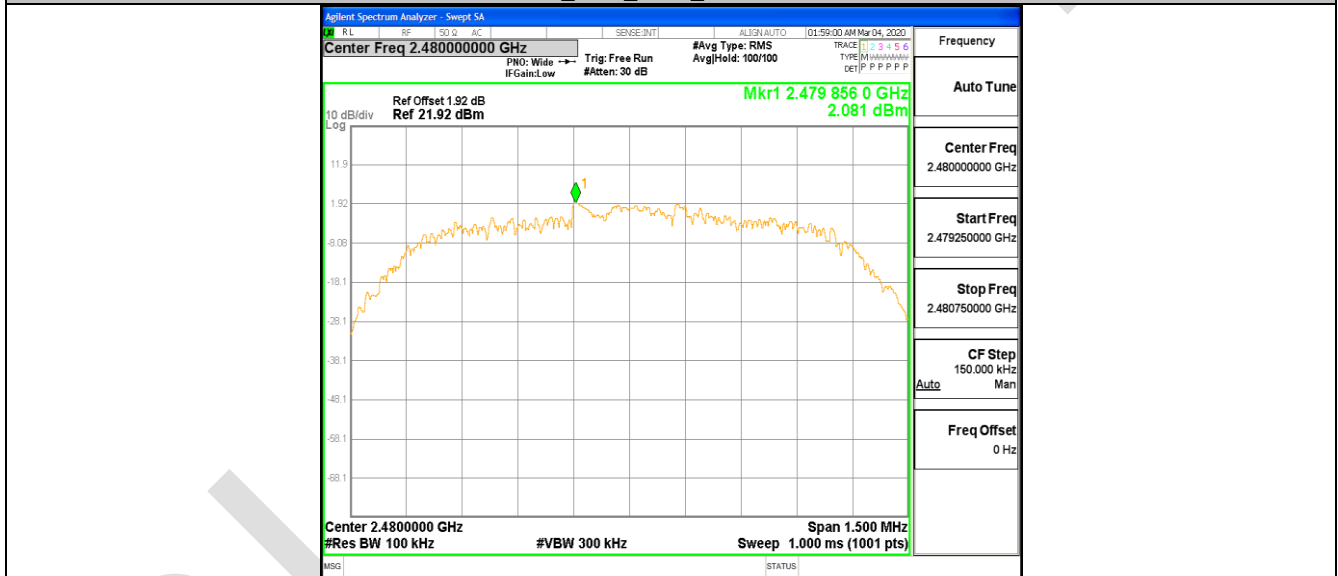
2DH1\_Ant1\_2441\_30~1000



2DH1\_Ant1\_2441\_1000~26500

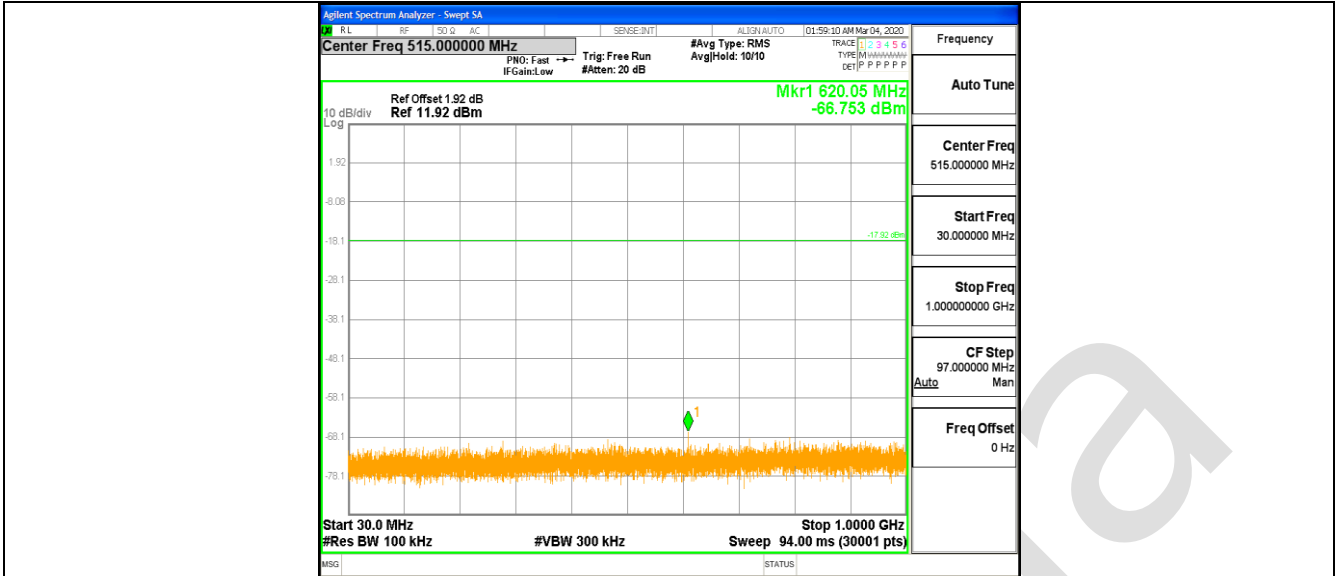


2DH1\_Ant1\_2480\_0~Reference

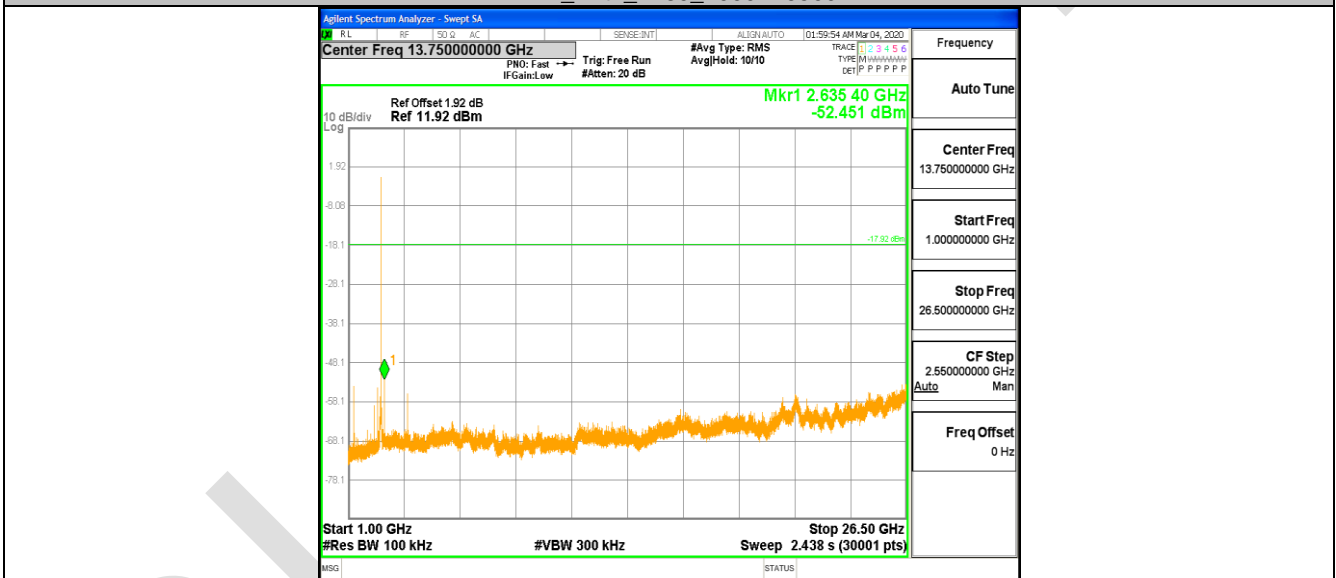


2DH1\_Ant1\_2480\_30~1000





2DH1\_Ant1\_2480\_1000~26500

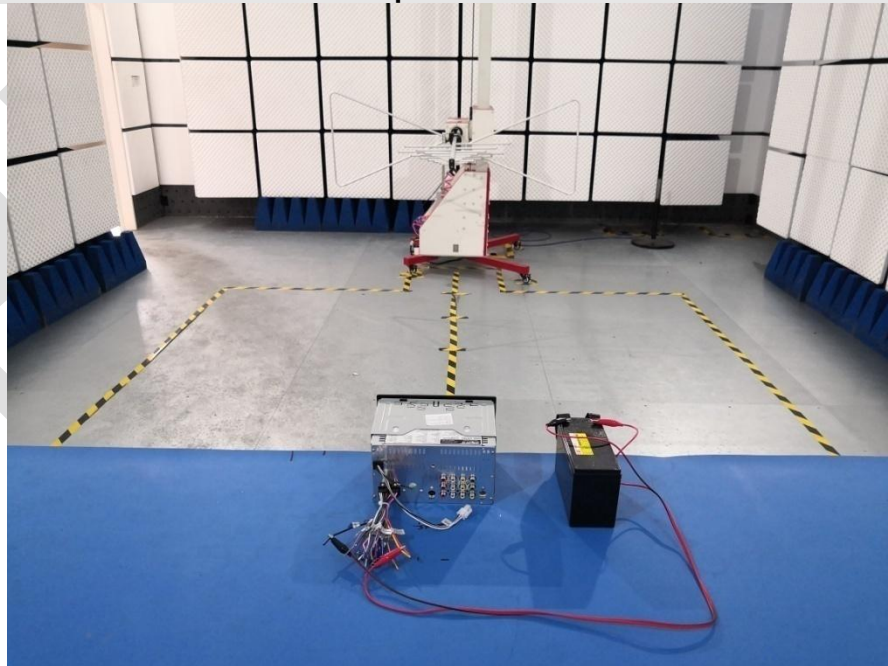


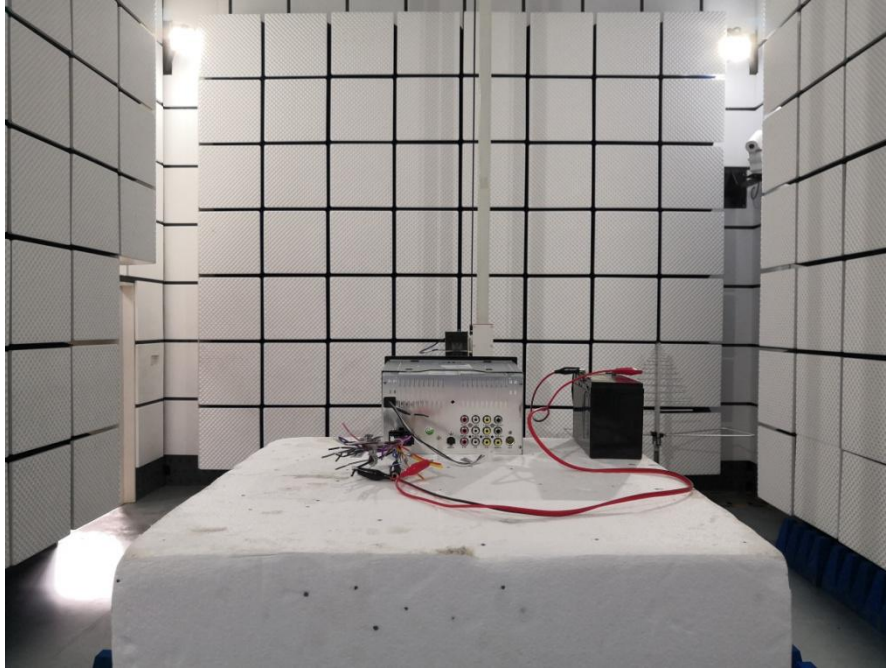
## APPENDIX A: PHOTOGRAPHS OF TEST SETUP

Antenna Requirement

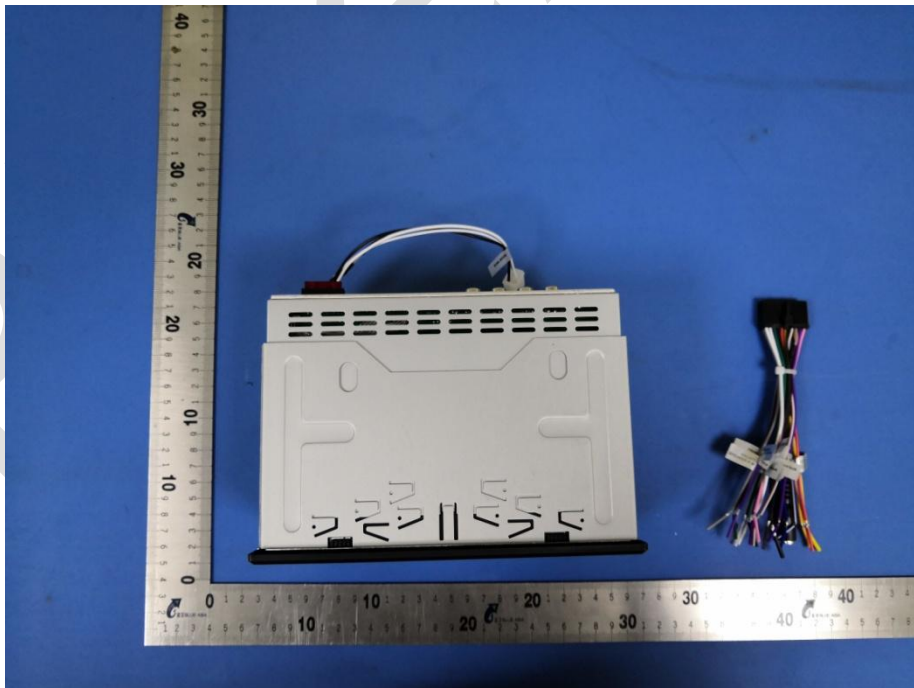


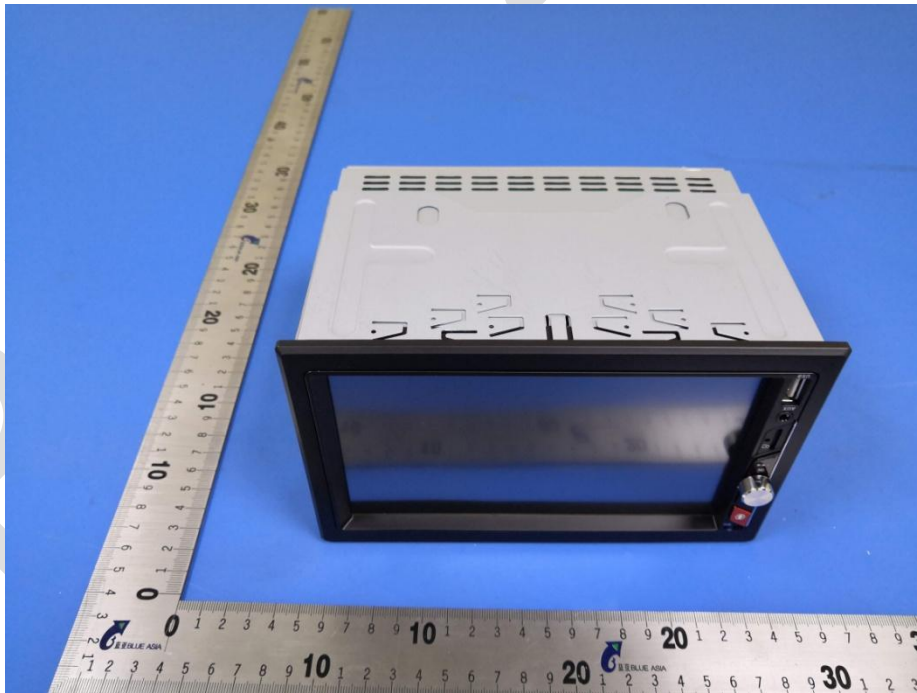
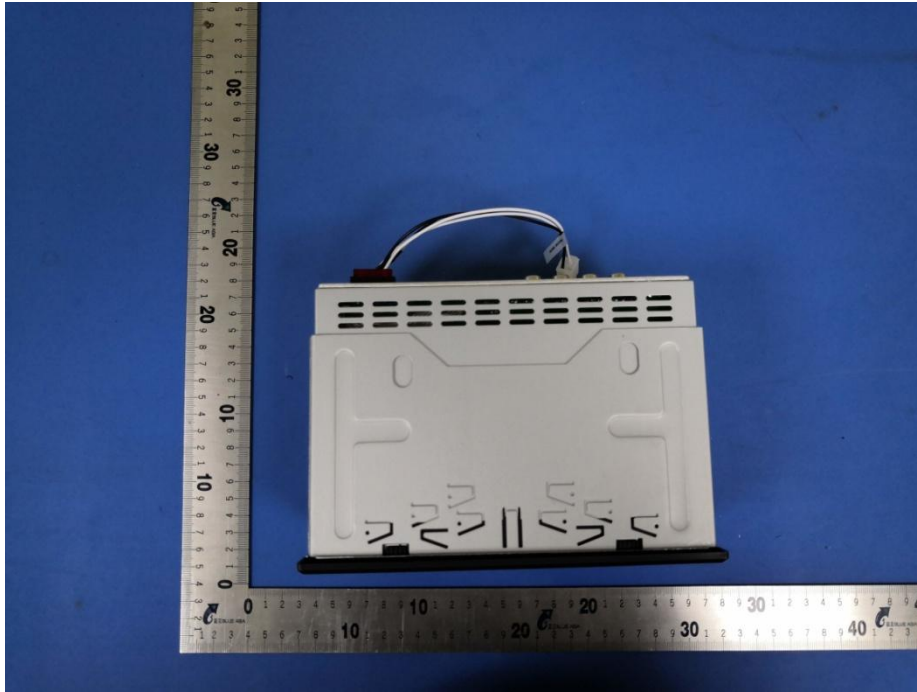
Radiated Spurious Emissions





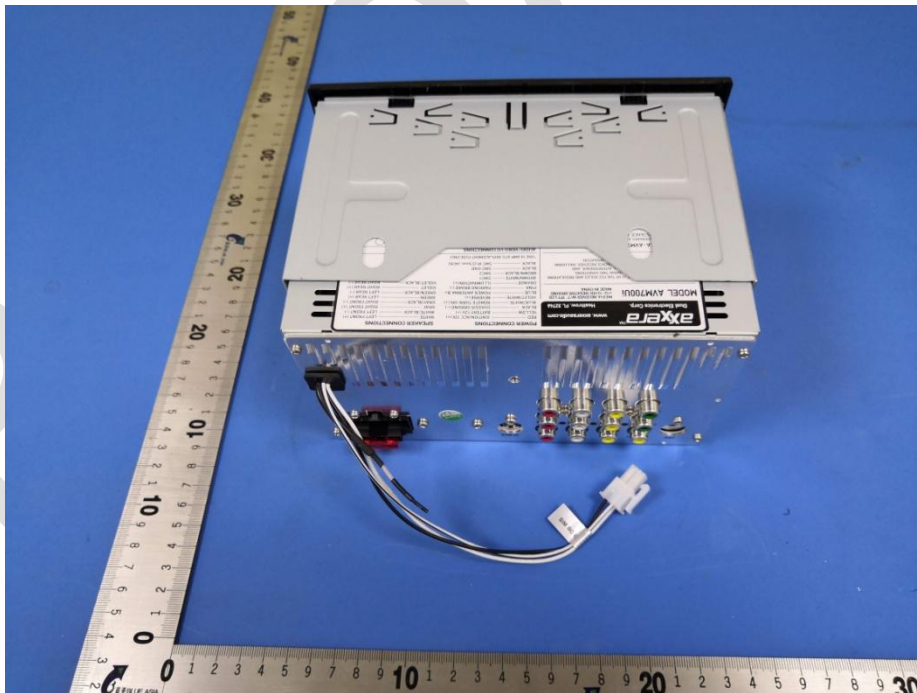
**APPENDIX B: PHOTOGRAPHS OF EUT**

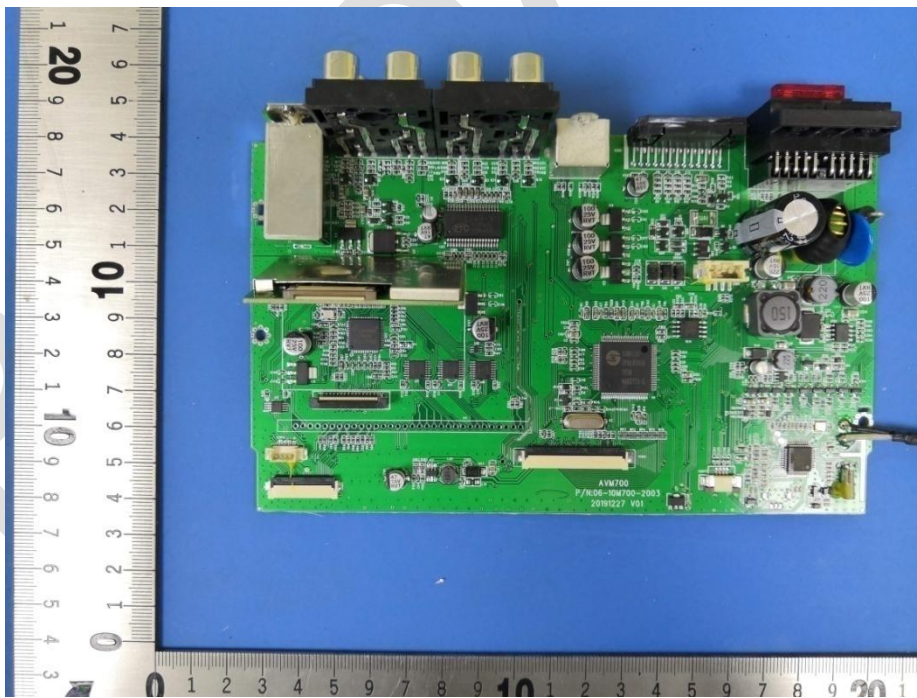
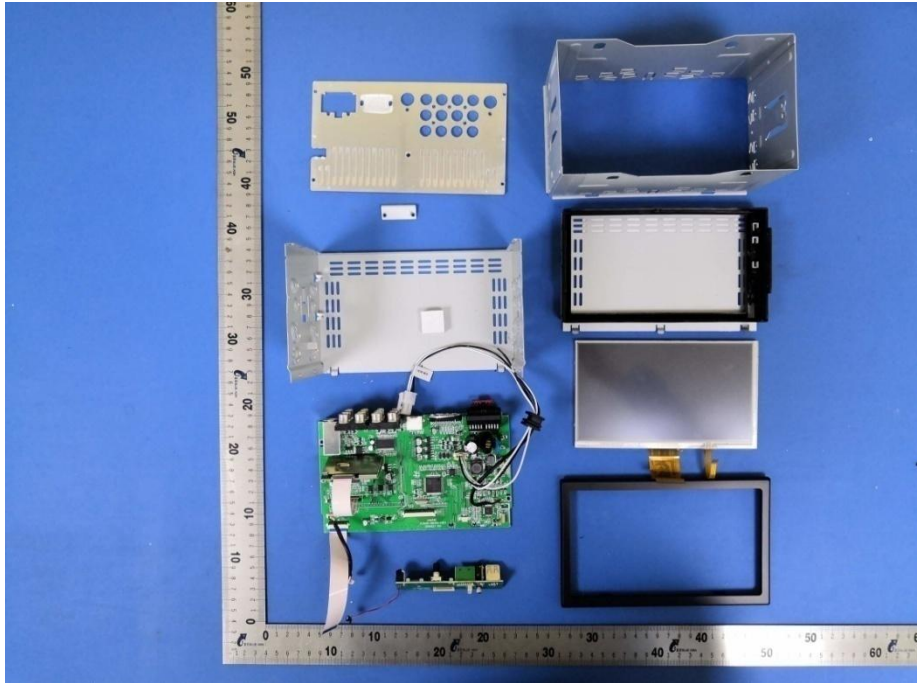




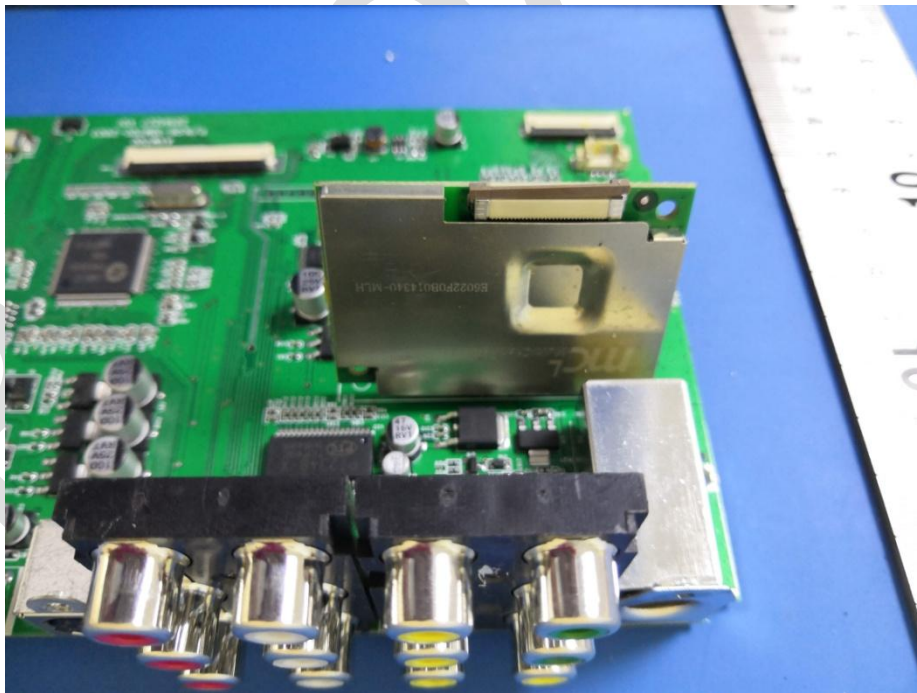
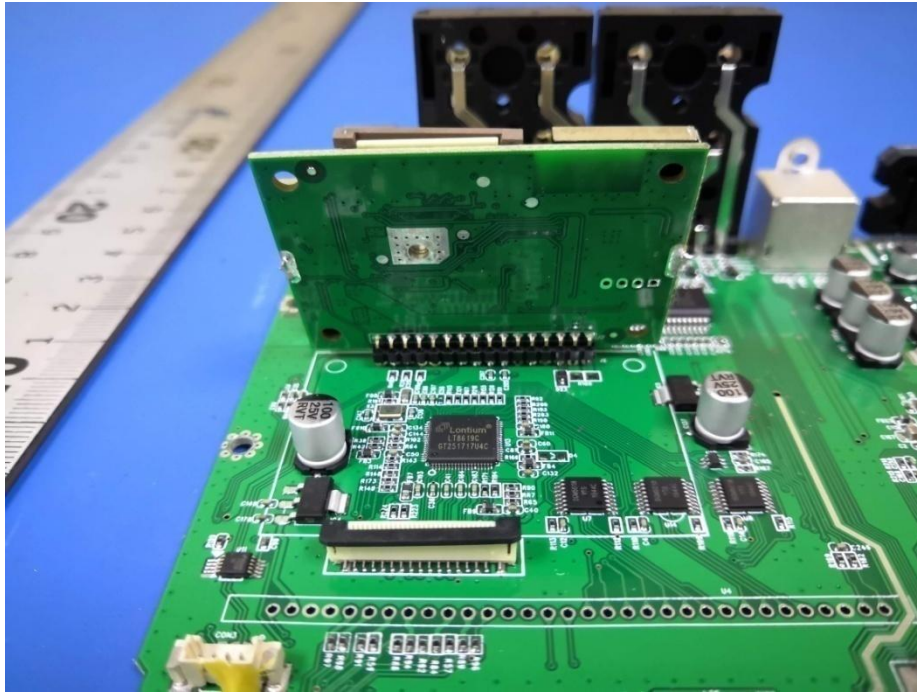




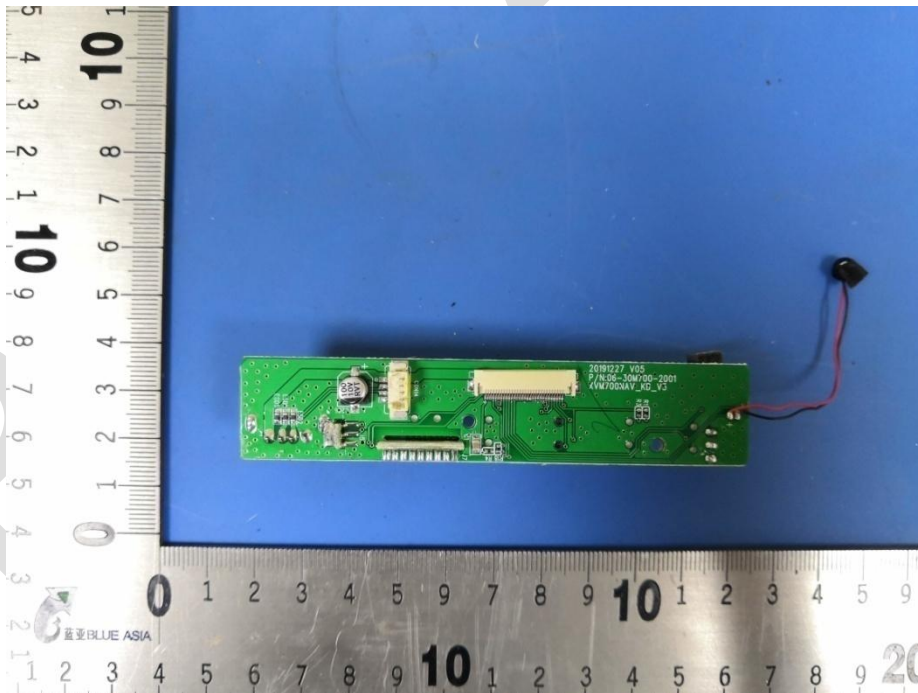
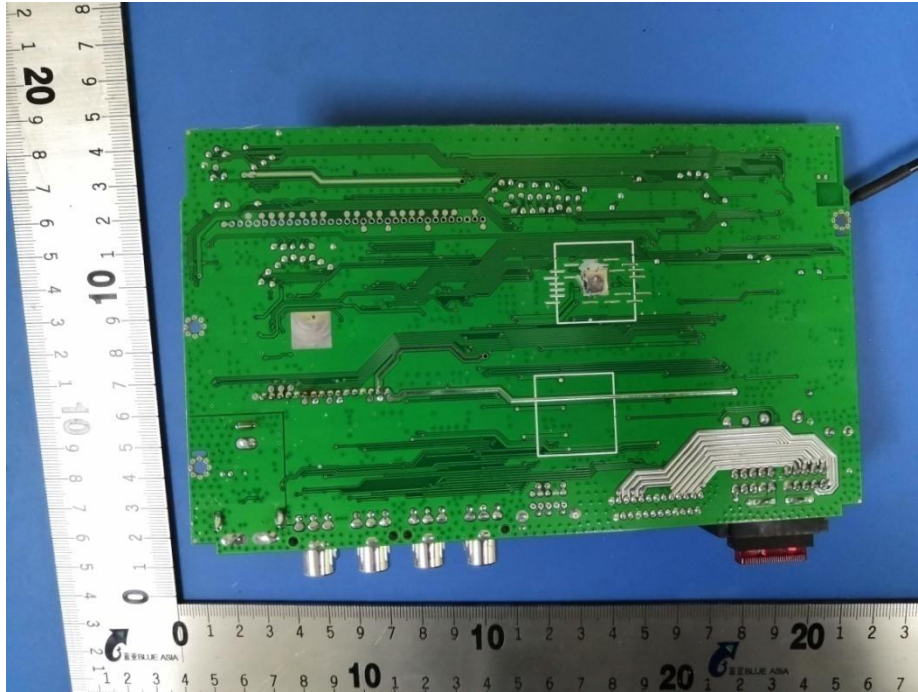


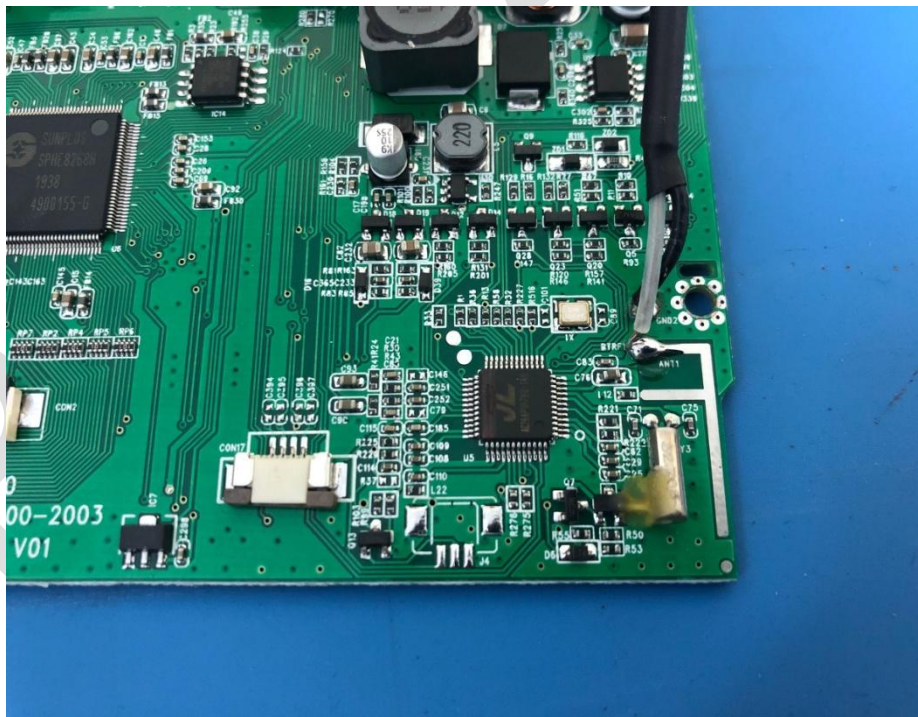
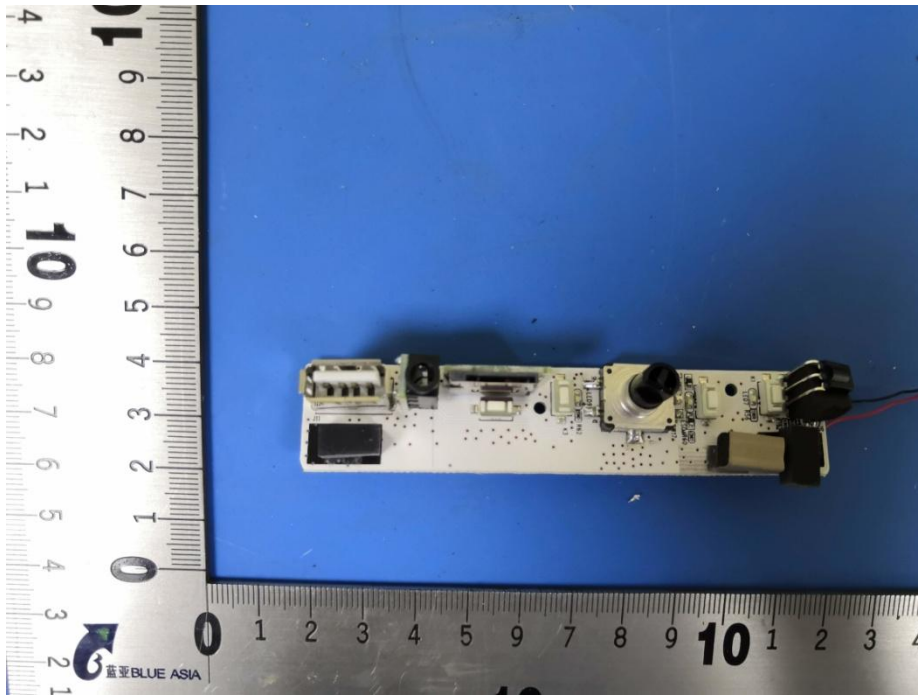


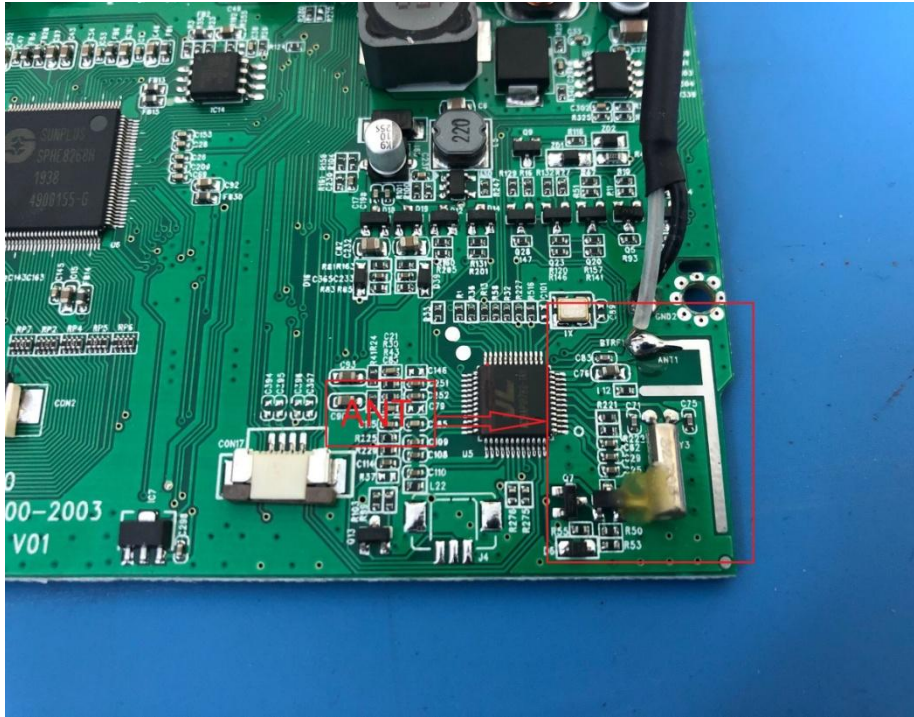












---END OF REPORT---

The test report is effective only with both signature and specialized stamp, The result(s) shown in this report refer only to the sample(s) tested. Without written approval of BlueAsia, this report can't be reproduced except in full.