



规格承认书

Specification for Approval

客户名称: YNOT Co., Ltd

Customer:

规格描述: 2.4G FPC Antenna with IPEX, RF1.13 Cable, L=280mm

Part name

飞宇信料号: 3.03.0101003937

Part No.

客户料号:

Customer Part No.

客户承认印 CUSTOMER APPROVED BY		
APPROVAL	CHIEF	SUPERVISOR

SALES	CHECK	CHIEF	DESIGN
<i>Effy</i>	<i>Zhou</i>	<i>Jerry</i>	<i>Young</i>
Date:2021-01-21		Date:2021-01-21	
THANKS FOR OFFERING US THE OPPORTUNITY TO SEND SAMPLES FOR APPROVEMENT. PLS KINDLY SIGN BACK THIS DOCUMENT TO US WHEN SAMPLES ARE APPROVED.			

FEIYUXIN HEADQUARTER

Add: No.76 Baotong South Road, XiKeng Industrial Zone, LongGang District, Shenzhen 518115, China

TEL: 0755-89737230

FAX: 0755-89737181

Email: sales@fyxdz.com

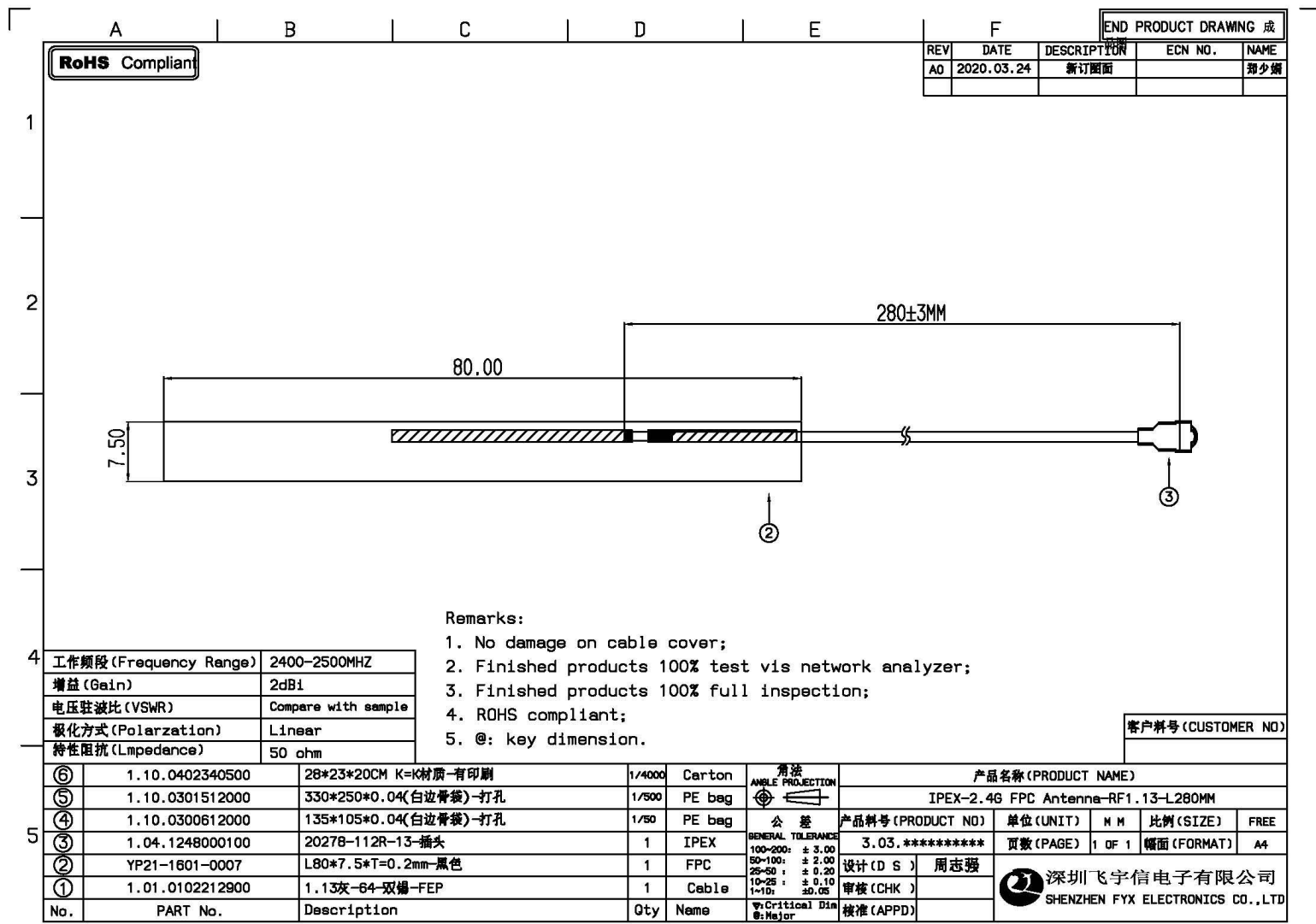
INDEX.

1)	Cover.....	1
2)	Index.....	2
3)	Drawing.....	3
4)	Specifications.....	4-5
5)	Test Report.....	6

Modification Record

Revision	Date	Engineer	Modified Content
01	2021.01.21	Jerry	NEW

Antenna Drawing



表单编号: FYX/E-QR-14A 版本: 第三版

Product Specifications

1. Antenna Specs

Product Name: 2.4G FPC Antenna with RF1.13 Cable	
DESCRIPTION	VALUE
Frequency range	2400-2500MHz
Impedance	50Ω
V.S.W.R	Compare with sample
Gain	2dBi
Radiation	Omni-directional
Radiating element	1/4 Wave Helical
Polarization	linear Vertical
Admitted power	5W
Connector	IPEX/U.FL
Cable type	RF1.13
Operating temp	-40°C~+70°C
Storage temp	-45°C~+75°C



2. Cable Specs


1.13 Structure

Item	Material	OD(mm)
1. Inner conductor	Tinned copper wire	7/0.08±0.02
2. Insulator	PE	0.66±0.02
3. Outer conductor	Tinned copper wire	0.88±0.05
4. Jacket	FEP	1.13±0.05

Electrical performance

Capacitance(pF/m)	96±3
Impedance(ohm)	50
Rate(%)	66
Bending radius (mm)	≤7
Maximum operating voltage (VMS)	1000
Maximum operating frequency (MHz)	6000
Operating temperature range (°C)	-40 TO +80

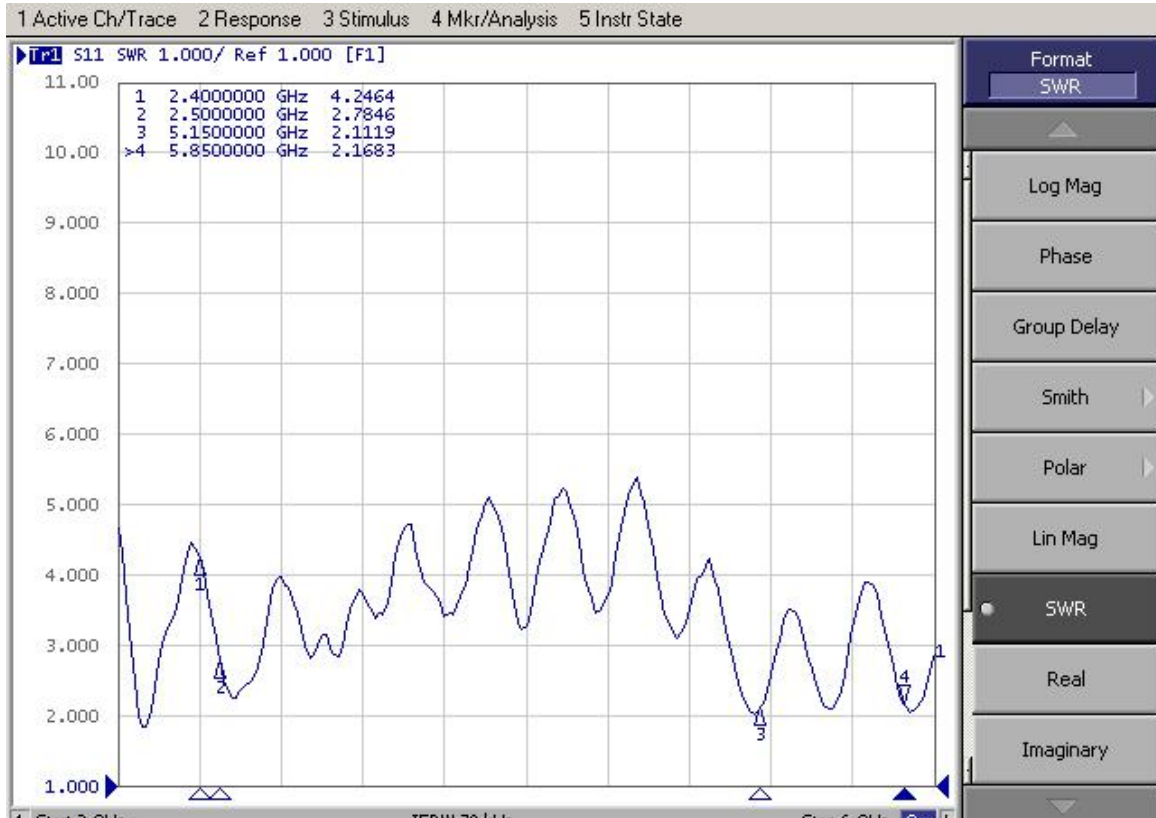
Attenuation (typical)

Frequency (MHz)	Attenuation (≧dB/m)
100	0.42
400	0.58
1000	2.20
2000	3.40
3000	4.20
4000	4.50
5000	5.20
6000	5.60

Test Report

(Empty test without customer's machine)

1. VSWR Test



2. Efficiency and Gain Test

Freq (MHz)	Effi (%)	Effi (dB)	Gain (dBi)
2400	42.04	-3.76	2.58
2410	38.96	-4.09	2.2
2420	38.22	-4.18	2.03
2430	40.2	-3.96	2.57
2440	41.5	-3.82	2.96
2450	46.16	-3.36	3.5
2460	44.62	-3.51	3.62
2470	38.65	-4.13	2.9
2480	42.16	-3.75	3.36
2490	38.2	-4.18	2.4
2500	36.57	-4.37	1.97