

# LCD Stripe[Newton Touch]



Model : WA23FO012W0/IT



Model : WA29FO018W0/IT

## User Manual (V1.0)

It is recommended that you keep the manual for efficient use of the product, read and use the manual thoroughly.

### Change history

Version	Date	Page	Description
Ver.1.0	2021/08/23	/	1 <sup>st</sup> ISSUED

# Contents

<b>1. Precautions .....</b>	<b>2</b>
<b>2. Component .....</b>	<b>2</b>
<b>3. Pre-installation Instruction ....</b>	<b>3</b>
<b>4. Precautions for installation ...</b>	<b>3</b>
<b>5. Product description .....</b>	<b>4</b>
<b>6. Power &amp; External device connection .....</b>	<b>5</b>
<b>7. System description .....</b>	<b>6</b>
<b>Appendix .....</b>	<b>7</b>
<b>Product size .....</b>	<b>8</b>

## 1. Precautions

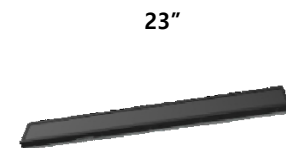
- Before using this product, read the manual in detail and keep the manual.
- Before using the LCD(liquid crystal display), read the manual thoroughly and understand how to operate it. Failure to comply may result in personal injury or property damage to users and others.
- Do not use near water or install in high temperature environments.
- Do not place in an environment exposed to direct sunlight or near hot air balloons or fireplaces (e.g. radiators, electric heaters, gas stoves, etc.).
- Prevent overheating by securing enough ventilation space around the product and about 10cm to ensure normal operation and heat dissipation.
- Don't put it on a vibrating or shaking shelf or on a table, or on an unstable place like a moving cart; people can be hurt or even killed. Or the product may fall and be severely damaged.
- When installing the product, make sure that there is enough space to connect the power cable to the outlet to prevent it from being stepped on or pressed.
- Do not connect many products or other electronics to one outlet at the same time.
- Do not connect unauthorized power cables or other devices to the product.
- Use only the products of the designated parts manufacturer.
- Clean using a dry cloth, and turn off the power to the product before cleaning.
- Keep this product and other packaging items out of reach of children.
- Do not attempt repairs or disassemble the product yourself. Disassembling the product may result in electric shock or other hazards. If you ignore the warning, you may die or be seriously injured. Ask for help from a vendor or service center.

▲ WARNING: if you are using a Class 1 adapter, connect it to a grounded power outlet.

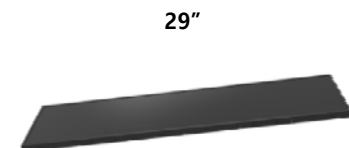
If this manual does not work properly, please contact the service center.

## 2. Component

Check the packing box of the product and if there are any items missing, please contact the store you purchased. The actual nature of the component may differ from the illustration.



LCD(liquid crystal display) : 6pcs



LCD(liquid crystal display) : 6pcs

### 3. Pre-installation Instruction

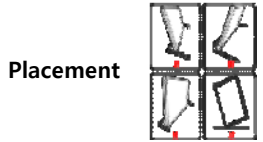
#### Packaging Box Open

Before opening the product packaging box, inspect the packaging box and install it on a flat surface near the wall with the outlet.  
Place the face with the arrow mark on the product packaging box upward.



#### Transport

When carrying the product, make sure to hold it with both hands.  
Don't give the screen a boost when you catch the product.  
Avoid applying force to the screen or sharp and sharp objects.



#### Placement

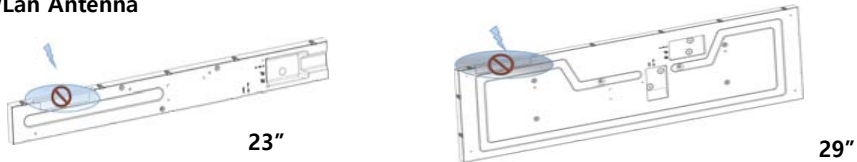
When you place the product, let the front of the screen face down as shown below.  
Don't put the product up.  
Do not support the product with the corners of the product

### 4. Precautions for installation

To avoid damage to the product, install it on the wall as described in the product.  
We recommend installing through an authorized installation company.

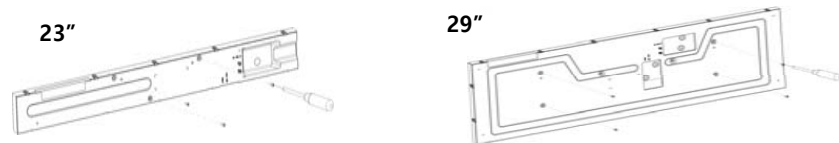
When a product is used vertically or horizontally, an obstacle is used to the output terminal of the product, Try not to disturb the input terminal.  
Otherwise, the product may not function properly.  
Free enough space before installation to place the product.  
Please refer to the last page of this manual for detailed product size.

#### WLAN Antenna



There is a WLAN connection antenna at the top of the product. When installing the product, make sure that there are no objects on the radio antenna and that there are no metal objects or devices around the product. Otherwise, the wireless signal may be weak or signal-free.

#### Rear Screw Hole



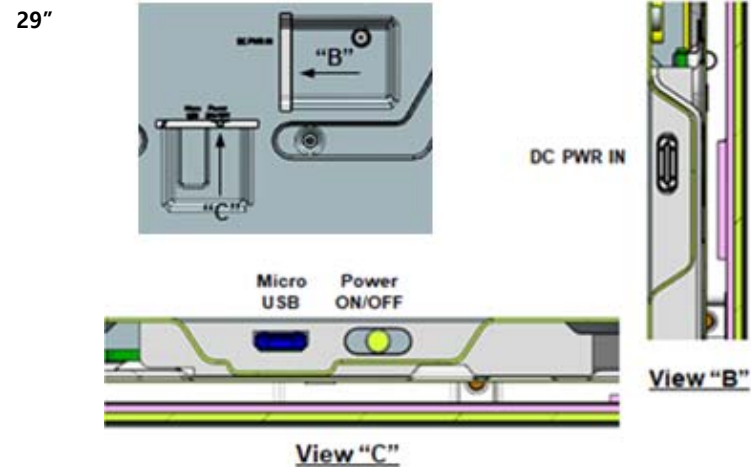
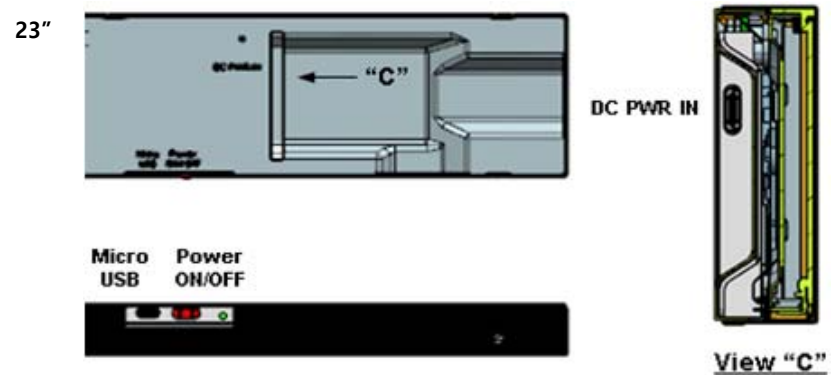
There are four screw holes on the back of the product, which can be installed using them.  
Fasten the fixing bracket to the product using four M3x6mm long screws (maximum torque 4kgf-cm).

**▲ Caution: The product may fall and others may get hurt.**  
**Note: You can purchase a wall-mounted stand separately and it can be easily installed..**

### 5. Product Description

#### External Terminal Description

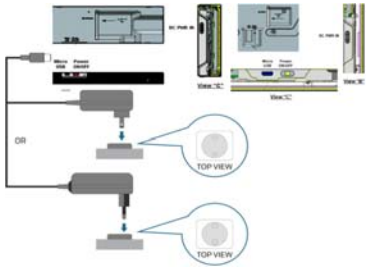
The table and figures below describe the location and functionality of the product's external terminals.



Terminals	Function
DC PWR IN	Connect the power cable to supply power.
Micro USB (OTG)	Connect to your computer with a USB cable to operate your device. Connect external storage devices, including videos or photos, or peripherals, such as mouse keyboards..
Power ON/OFF	Set Power ON/OFF.

## 6. Power & External device connection

### Power connection



1. Connect the Type-C terminal of the adapter with the DC IN terminal of the product.
2. Plug the power cable into the power outlet.

When power is connected, the product is automatically turned on. Loose plugs in the adapter can cause current noise. Don't plug in and out of the adapter repeatedly.

#### ▲ Caution:

- Adapters may vary from country to country.
- Use power cables that are suitable for the AC voltage of the power outlet in any situation, meet the safety standards of the country/region of the material, and are accredited to the safety standards.
- Use a certified AC/DC adapter.

**Warning:** If the AC power cable is cut, please remove the adapter from the outlet first.

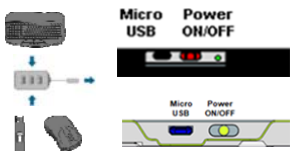
When using this product, use the following adapters:

UL certified products labeled "Class 2" or "LPS" or "PS2" with rating DC12V, 1.5A or more

### External device connection

- ▲ Note: Turn off all devices before connecting, and then power all devices after connecting.

### External terminal description



1. Connect Micro USB to USB cable or USB HUB to Micro USB terminal of product.
2. Connect Micro USB to USB cable or USB HUB to any device.
  - Connecting a flash memory drive, keyboard, or mouse allows the product to play video/image files on the flash memory drive.

#### ▲ Note: Products only support video/image file forms below via Micro-USB terminals.

(VP8, H.263, H.264, MPEG 1/2, Motion JPEG, MPEG AUDIO, WAV AUDIO, OGG AUDIO, FLAC AUDIO, MIDI AUDIO)

## 7. System description

### Setup

You can use the Settings menu for your product to adjust many settings for your product.

1. Select the "All Applications" button on the right side of the main screen and enter the "All Applications" menu. Or slide upwards from the bottom of the screen.
2. Select the settings from the list of "all applications".

### Network connection

Connect the power to the product and proceed in the order below to connect to the wireless router.

1. Select the "All Applications" button on the right side of the main screen and enter the "All Applications" menu. Or slide upwards from the bottom of the screen.
2. Select the Settings menu from the list of "All Applications".
3. Select "WLAN" from the "set" menu.
4. Activate the WLAN switch.
5. Select the SSID of the shared device you want to connect to. To connect encrypted wireless hotspots, you must enter a hotspot password.
6. Return to the list of "all applications".
7. Select the Web browser application from the "All Applications" menu. Open the web page and make sure it is connected to the wireless Internet normally.

### Bluetooth connection setting

1. Select Bluetooth from the "set" menu;
2. Activate the Bluetooth switch;
3. Select the device you want to connect to.

### System language setting

Change the display language from the "Settings" menu:

1. Select the "language and input method" of the "general" menu of "set";
2. Select a language from the menu "language and input".
3. Drag the required language to the top of the language list or click the Add Language button using the "adjustment bar" on the right side of the menu.

### Installation application program

1. Select the "All Applications" button on the right side of the main screen and enter the "All Applications" menu. Or slide from the bottom to the top.
2. Select "Explorer" from the "All Applications" menu.
3. Find the location of the program installation file in the "Explorer" menu. Find it and then select the file.
4. Select the "install" button for the confirmation message on the screen. The application starts installation.
5. Select the "open" button.
6. After installing the application, the application can be executed on the screen of "All Applications".

## Appendix

Note: The following is the specification for the product. For simple reference, if you have any questions, please contact the vendor.

### 1. Display

LCD (Liquid Crystal Display)	Size	23"	29"
	Back Light	LED	LED
	Display Area	585.6(H) * 48.2(V) [mm]	712.8(H) * 213.7(V) [mm]
	Resolution	1920 *158	1920 *540
	Bright	700cd/m <sup>2</sup>	400cd/m <sup>2</sup>
	Viewing Angle	89° ( CR≥10 ) ( typ. )	89° ( CR≥10 ) ( typ. )
	Scanning Rate	60Hz	60Hz

### 2. Touch

Touch Panel	Touch Technology	LG Incell
	Driving Method	USB Free drive
	Touch System	finger or capacitance pen
	OS	Android

### 3. System configuration

Android	Android 버전	Android 8.1
	중앙처리장치	PX30
	ROM	8G EMMC
	RAM	1G DDR3

### 4. Standard rating

Rating	AC Input	110V~220V 50/60Hz
	Power consumption	<18W
	Standby power consumption	≤0.5W
	Power supply interface	Type-C

### 5. Use environment

Use environment	Operating temperature	0°C ~ 45°C
	Operating humidity	10% RH ~ 80% RH
	Storage temperature	-20°C ~ 60°C
	Storage humidity	10% RH ~80% RH
	Lifetime of use	50000Hrs

## 5. Safety

### FCC Part 15C

This device complies with part 15 of the FCC Rules. Operation is subject to the following two conditions:

- (1) This device may not cause harmful interference, and
- (2) This device must accept any interference received, including interference that may cause undesired operation.

### FCC Information to User

This equipment has been tested and found to comply with the limits for a Class B digital device, pursuant to Part 15 of the FCC Rules. These limits are designed to provide reasonable protection against harmful interference in a residential installation. This equipment generates, uses and can radiate radio frequency energy and, if not installed and used in accordance with the instructions, may cause harmful interference to radio communications. However, there is no guarantee that interference will not occur in a particular installation. If this equipment does cause harmful interference to radio or television reception, which can be determined by turning the equipment off and on, the user is encouraged to try to correct the interference by one of the following measures:

- Reorient or relocate the receiving antenna.
- Increase the separation between the equipment and receiver.
- Connect the equipment into an outlet on a circuit different from that to which the receiver is connected.
- Consult the dealer or an experienced radio/TV technician for help.

### Caution

THE GRANTEE IS NOT RESPONSIBLE FOR ANY CHANGES OR MODIFICATIONS NOT EXPRESSLY APPROVED BY THE PARTY RESPONSIBLE FOR COMPLIANCE. SUCH MODIFICATIONS COULD VOID THE USER'S AUTHORITY TO OPERATE THE EQUIPMENT.

### IC(Canada)

The Firmware Version Identification Number (FVIN) must be provided as appropriate (if the product does not require firmware for operation, "N/A" shall be entered as FVIN)  
The FVIN must be provided if applicable; "N/A" can be entered as the FVIN.

This device complies with Industry Canada's licence-exempt RSSs. Operation is subject to the following two conditions:

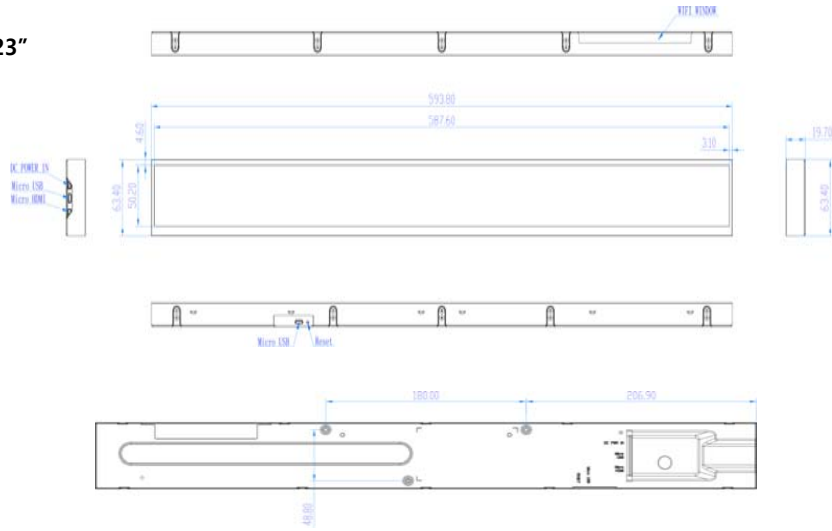
- (1) This device may not cause interference; and (2) This device must accept any interference, including interference that may cause undesired operation of the device Le présent appareil est conforme aux CNR d'Industrie Canada applicable aux appareils radio exempts de licence.  
L'exploitation est autorisée aux deux conditions suivantes : (1) l'appareil ne doit pas produire de brouillage, et
- (2) l'utilisateur de l'appareil doit accepter tout brouillage radioélectrique subi, même si le brouillage est susceptible d'en compromettre le fonctionnement.

### Caution

This device complies with FCC radiation exposure limits for an uncontrolled environment. Avoid operating this device at a distance less than 20cm from the user

# Product size

23"



29"

