

# ART SIGNAL

## ANTENNA TOTAL SOLUTION



## | **2.4G Antenna Test Data**

### **Solu-M Newton 12.2 Inch Tag #1 ANT Test Data** **- Network & 3D gain & 3D Radiation Pattern**

2023-11-14

Test by : Dong-Kyu Hwang

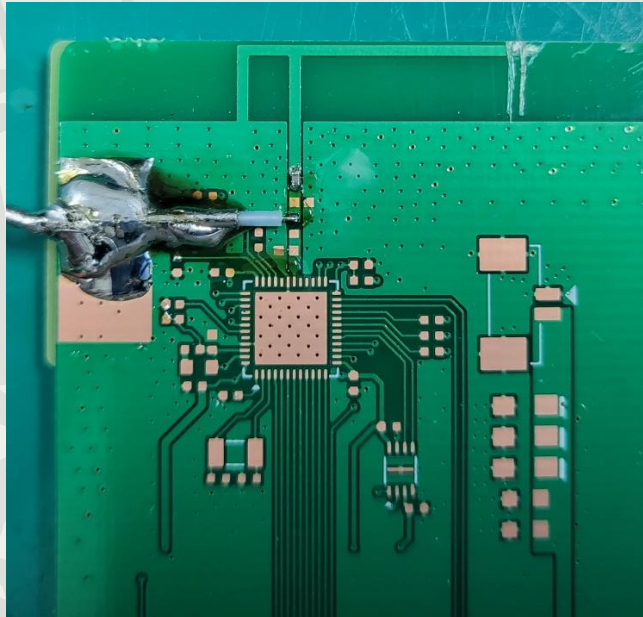
ART SIGNAL CO., LTD.

A-1008, Woolim Lion's Vally 2nd, 14, Sagimakgol-ro 45beon-gil,  
Jungwon-gu, Seongnam-si, Gyeonggi-do, KOREA

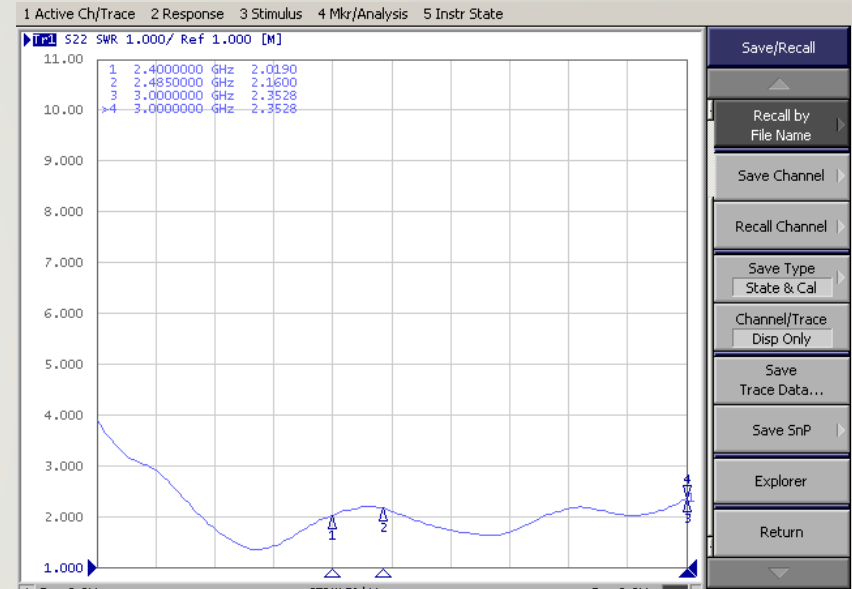
A N T E N N A T O T A L S O L U T I O N

# Solu-M Newton 12.2Inch Tag #1 TEST DATA

Picture



VSWR

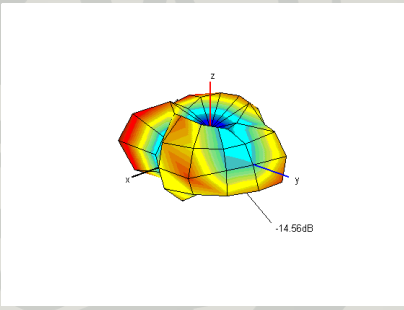
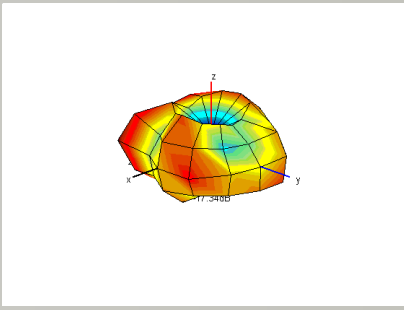
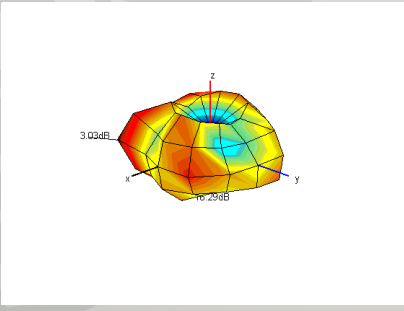


3D gain

	1	2	3	4	5
<b>Frequency [MHz]</b>	2400	2420	2440	2460	2485
<b>Efficiency [dB]</b>	-3.91	-3.54	-3.01	-2.90	-2.85
<b>Efficiency [%]</b>	40.6	44.3	50.1	51.3	51.8
<b>Peak Gain [dB]</b>	1.90	2.31	2.75	2.84	3.03
<b>Directivity [dB]</b>	5.81	5.84	5.75	5.74	5.89
<b>Minimum Gain [dB]</b>	-14.56	-14.70	-15.95	-17.34	-16.29

## 2.4G ANT DATA - 3D Radiation Pattern

### 3D Radiation Pattern

2400	2420	2440	2460
			
2485			
			

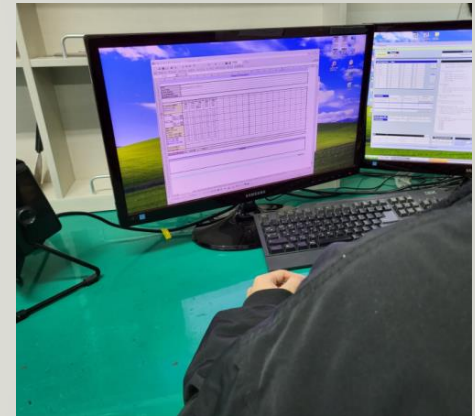
## Measurement Procedure



Network Analyzer을  
이용하여 VSWR 측정



3D Chamber에 Set 거치



Program을 이용하여  
Gain 측정

# Measurement Equipment

## Network Analyzer



**E5071B (Agilent)**



**8753ES (Agilent)**



**CTIA 3D OTA Chamber(A+Tech)**