

# ART SIGNAL

## ANTENNA TOTAL SOLUTION



## | **2.4G Antenna Test Data**

### **Solu-M 6.0 inch tag ant#1 2.4G Antenna Test Data** **- Network & 3D gain & 3D Radiation Pattern**

2023-09-20

Test by : Dong-Kyu Hwang

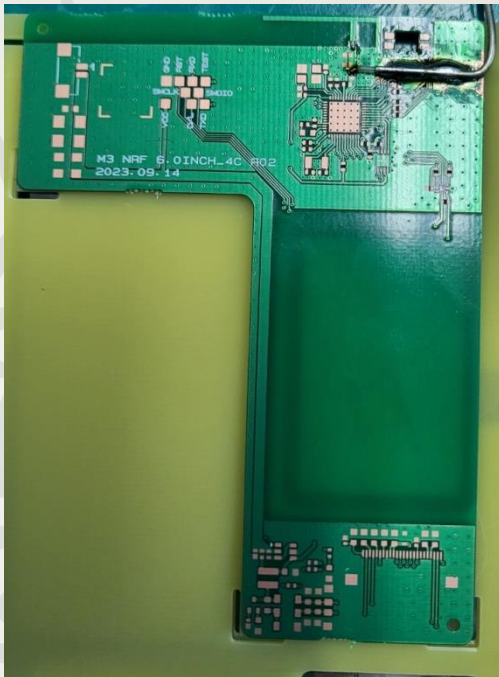
ART SIGNAL CO., LTD.

A-1008, Woolim Lion's Vally 2nd, 14, Sagimakgol-ro 45beon-gil,  
Jungwon-gu, Seongnam-si, Gyeonggi-do, KOREA

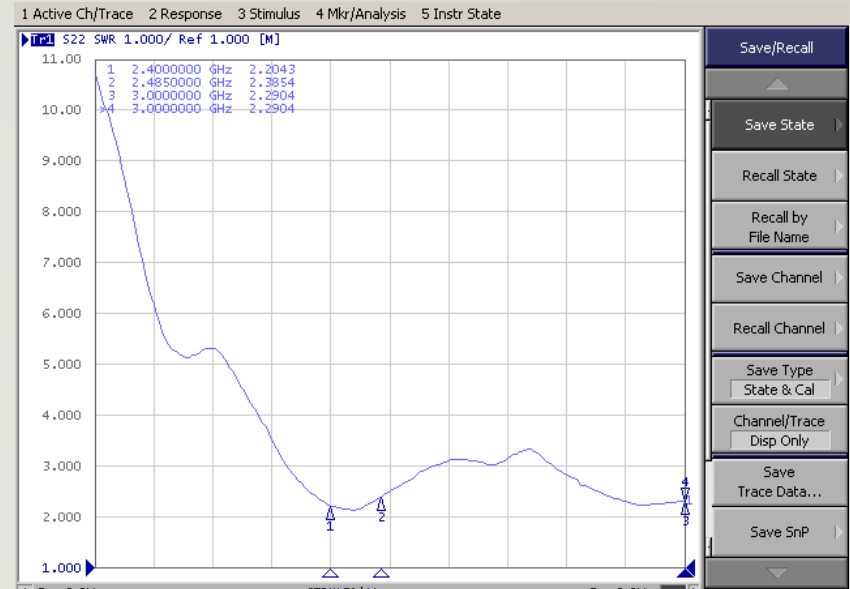
A N T E N N A T O T A L S O L U T I O N

# Solu-M 6.0inch tag ant #1 TEST DATA

Picture



VSWR

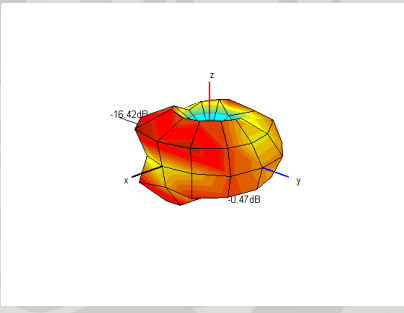
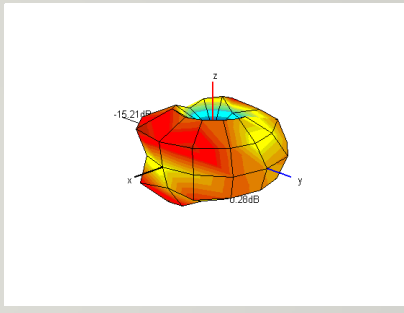
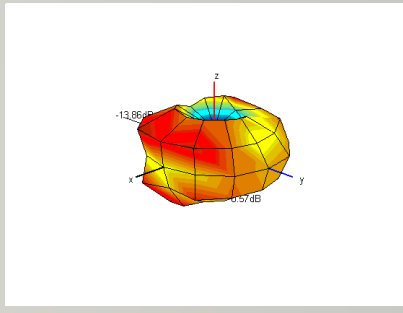
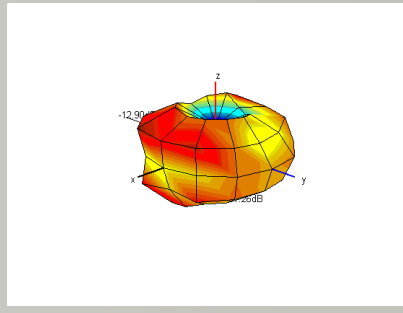
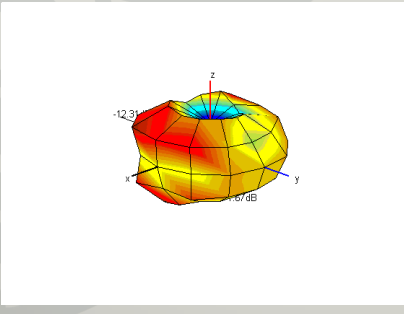


3D gain

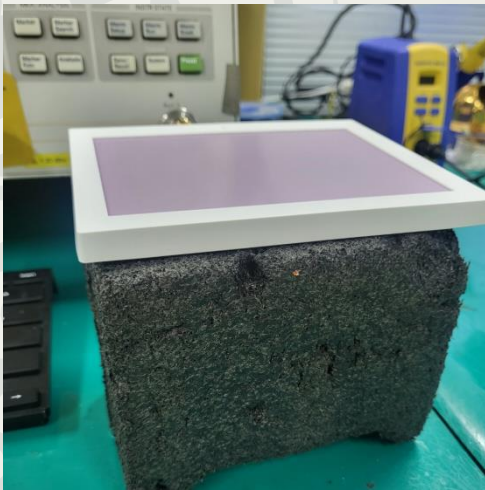
	1	2	3	4	5
<b>Frequency [MHz]</b>	2400	2420	2440	2460	2485
<b>Efficiency [dB]</b>	-4.90	-4.31	-3.84	-3.01	-2.89
<b>Efficiency [%]</b>	32.3	37.0	41.3	50.0	51.4
<b>Peak Gain [dB]</b>	-0.47	0.28	0.57	1.26	1.67
<b>Directivity [dB]</b>	4.43	4.59	4.41	4.27	4.55
<b>Minimum Gain [dB]</b>	-16.42	-15.21	-13.86	-12.90	-12.31

## 2.4G ANT DATA - 3D Radiation Pattern

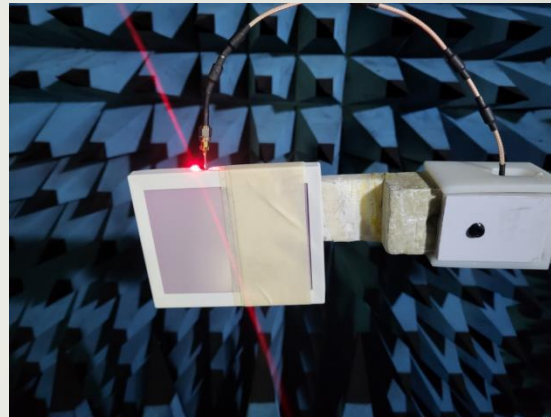
### 3D Radiation Pattern

2400	2420	2440	2460
			
2485			
			

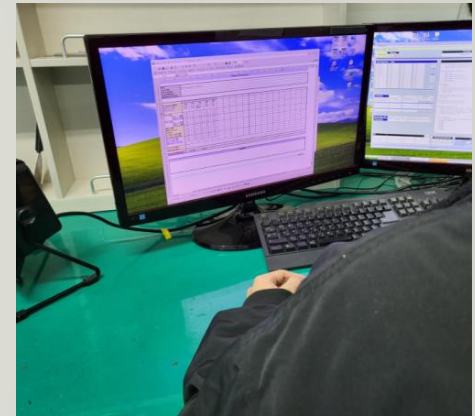
## Measurement Procedure



Network Analyzer을  
이용하여 VSWR 측정



3D Chamber에 Set 거치



Program을 이용하여  
Gain 측정

# Measurement Equipment

## Network Analyzer



**E5071B (Agilent)**



**8753ES (Agilent)**



**CTIA 3D OTA Chamber(A+Tech)**