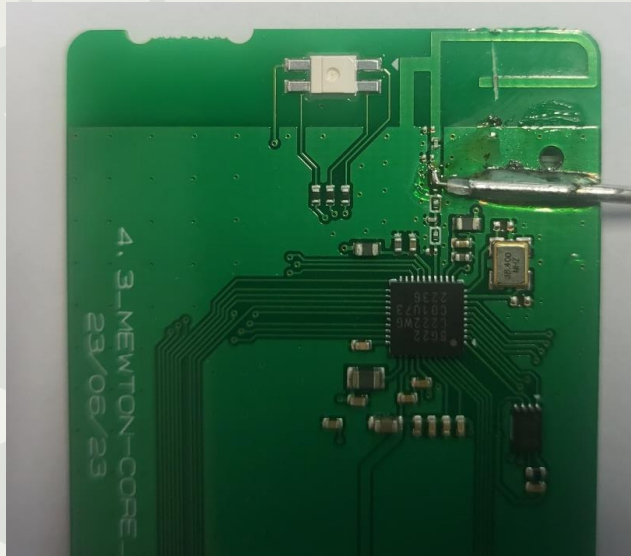
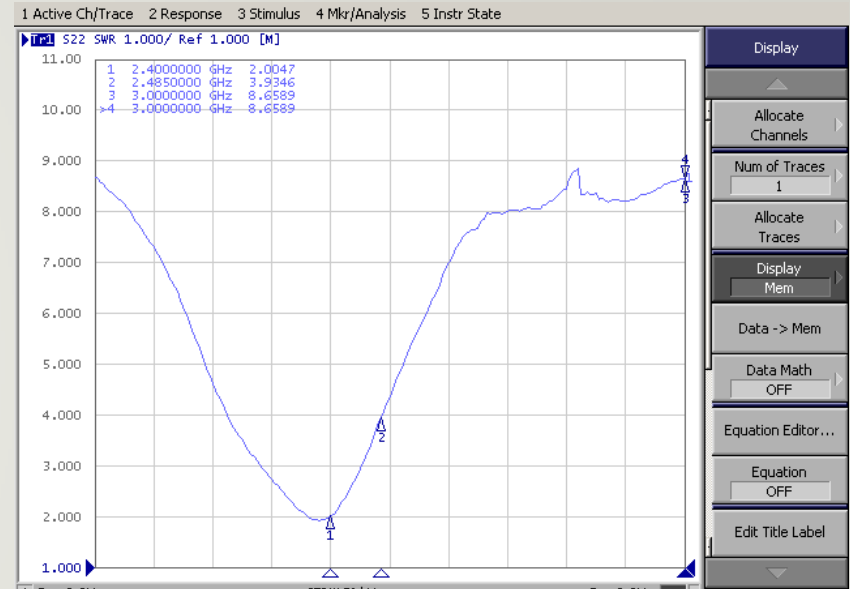


# Solu-M Newton Core Silabs 4.3" #TEST DATA

Picture



VSWR

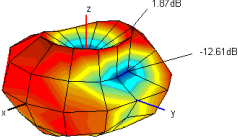
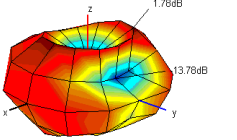
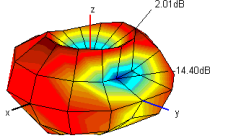
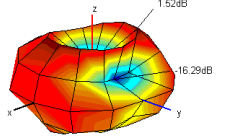
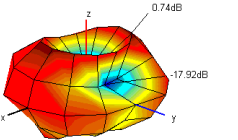


3D gain

	1	2	3	4	5
<b>Frequency [MHz]</b>	2400	2420	2440	2460	2485
<b>Efficiency [dB]</b>	-2.10	-2.04	-1.87	-2.60	-3.62
<b>Efficiency [%]</b>	61.6	62.5	65.0	54.9	43.5
<b>Peak Gain [dB]</b>	1.87	1.78	2.01	1.52	0.74
<b>Directivity [dB]</b>	3.97	3.82	3.88	4.12	4.36
<b>Minimum Gain [dB]</b>	-12.61	-13.78	-14.40	-16.29	-17.92

## 2.4G ANT DATA - 3D Radiation Pattern

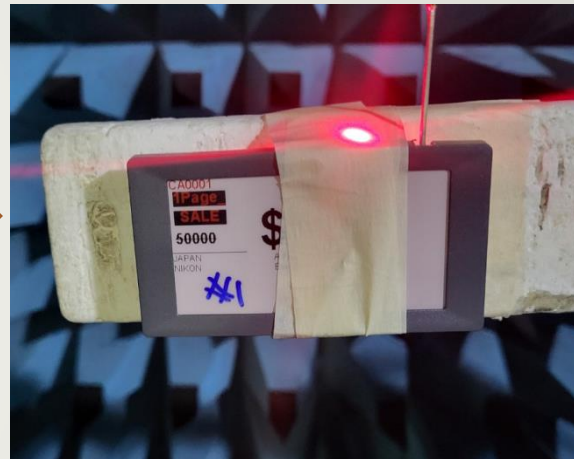
### 3D Radiation Pattern

2400	2420	2440	2460
			
2485			
			

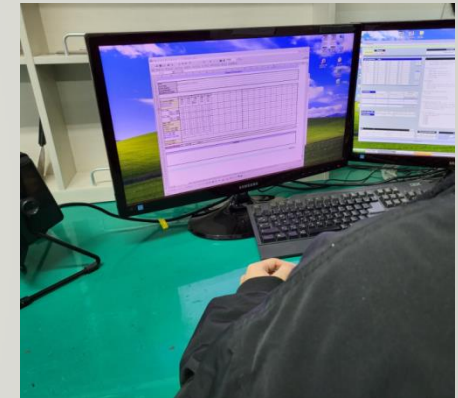
## Measurement Procedure



Network Analyzer을  
이용하여 VSWR 측정



3D Chamber에 Set 거치



Program을 이용하여  
Gain 측정

# Measurement Equipment

## Network Analyzer



**E5071B (Agilent)**



**8753ES (Agilent)**



**CTIA 3D OTA Chamber(A+Tech)**