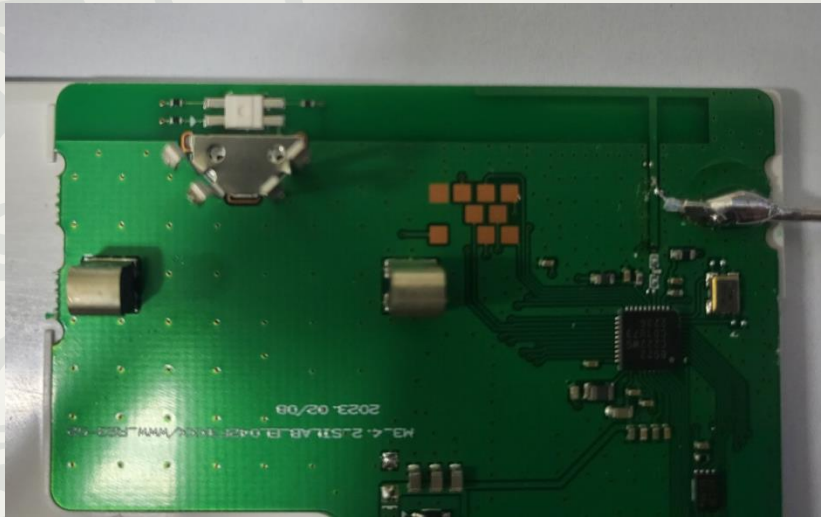
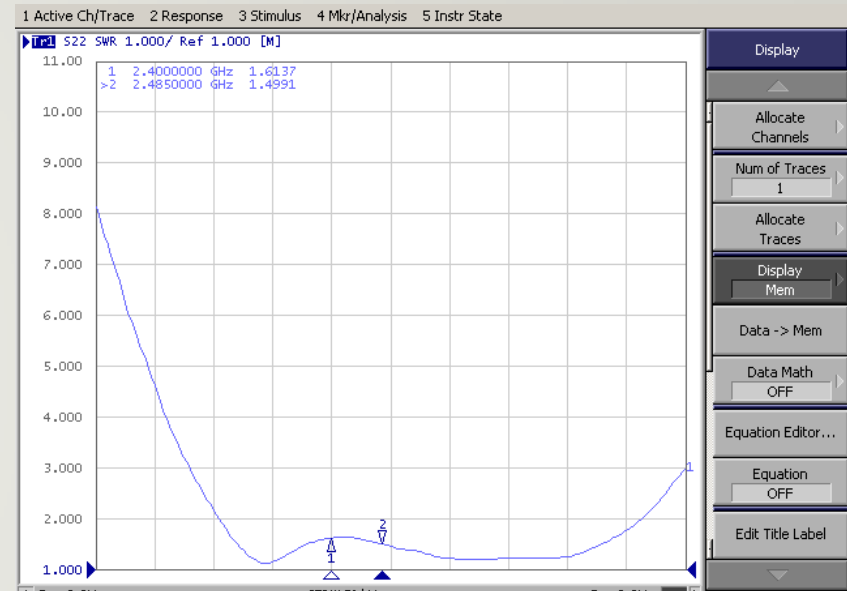


Solu-M Newton Silabs 4.2 ANT #1 TEST DATA

Picture



VSWR

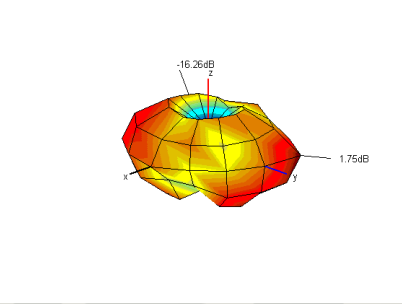
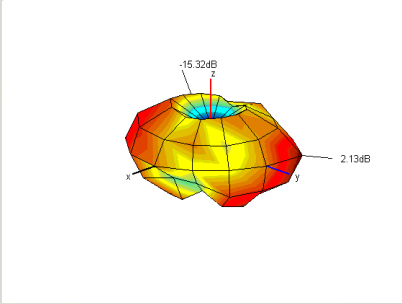
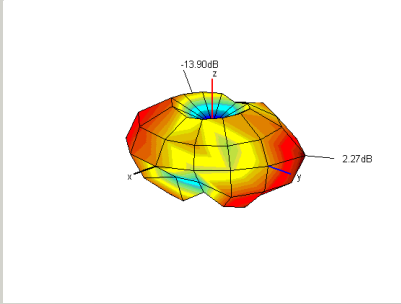
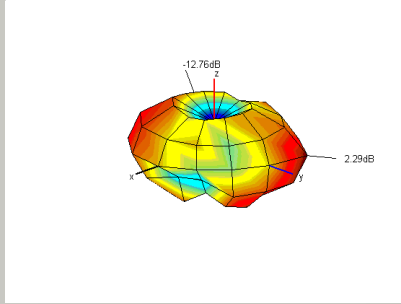
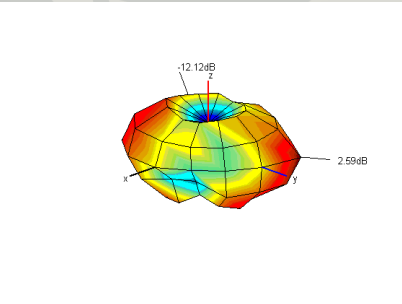


3D gain

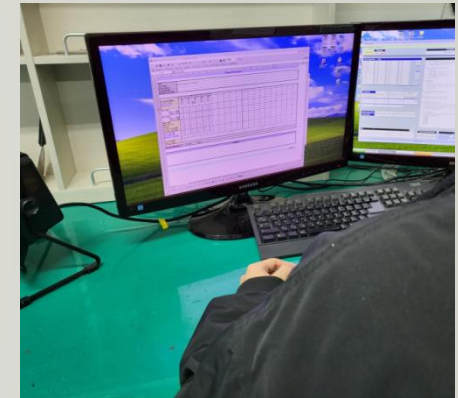
| | 1 | 2 | 3 | 4 | 5 |
|--------------------------|--------|--------|--------|--------|--------|
| Frequency [MHz] | 2400 | 2420 | 2440 | 2460 | 2485 |
| Efficiency [dB] | -2.67 | -2.41 | -2.20 | -2.12 | -1.96 |
| Efficiency [%] | 54.1 | 57.4 | 60.3 | 61.4 | 63.7 |
| Peak Gain [dB] | 1.75 | 2.13 | 2.27 | 2.29 | 2.59 |
| Directivity [dB] | 4.42 | 4.55 | 4.47 | 4.41 | 4.55 |
| Minimum Gain [dB] | -16.26 | -15.32 | -13.90 | -12.76 | -12.12 |

2.4G ANT DATA - 3D Radiation Pattern

3D Radiation Pattern

| 2400 | 2420 | 2440 | 2460 |
|---|---|--|---|
|  |  |  |  |
| 2485 | | | |
|  | | | |

Measurement Procedure



Network Analyzer을
이용하여 VSWR 측정

3D Chamber에 Set 거치

Program을 이용하여
Gain 측정

Measurement Equipment

Network Analyzer



E5071B (Agilent)



8753ES (Agilent)



CTIA 3D OTA Chamber(A+Tech)