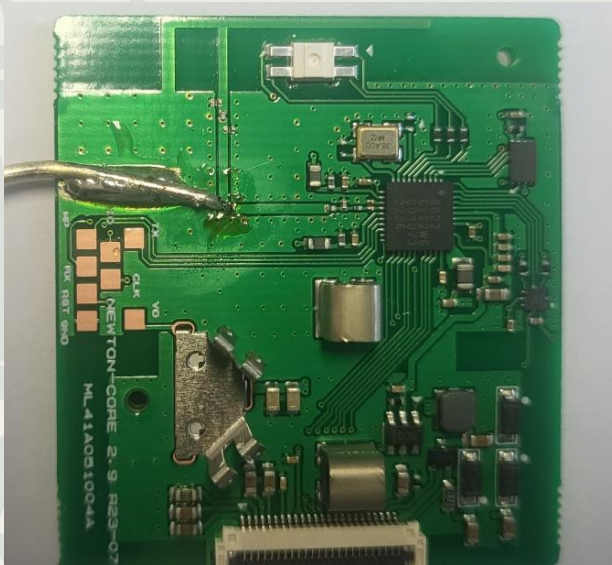
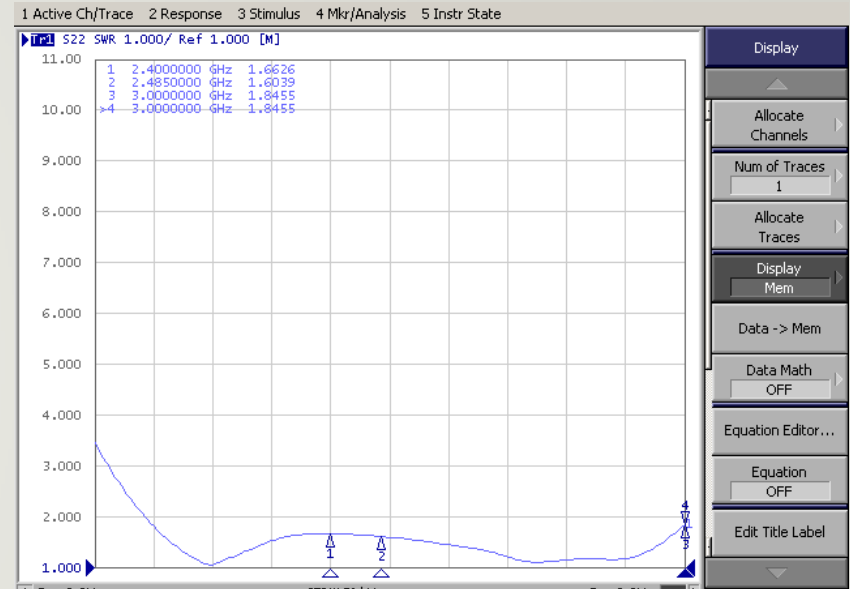


# Solu-M Newton Core Silabs 2.6"R23-07 #1 TEST DATA

Picture



VSWR

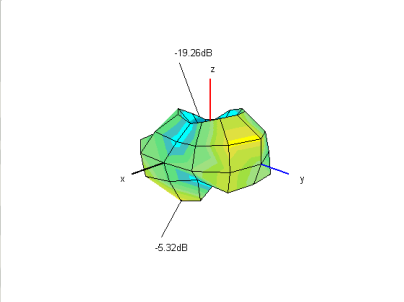
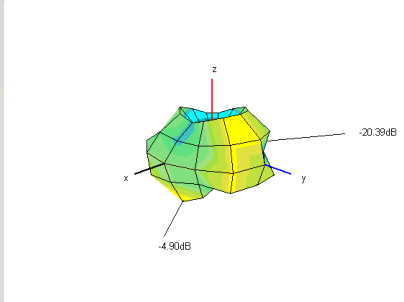
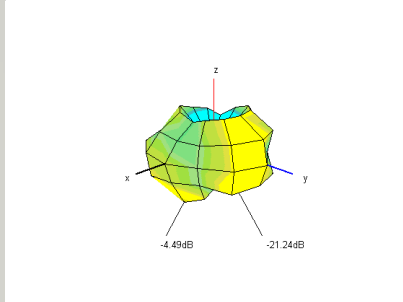
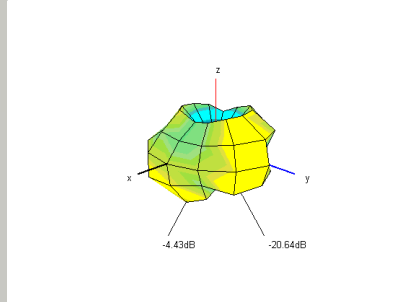
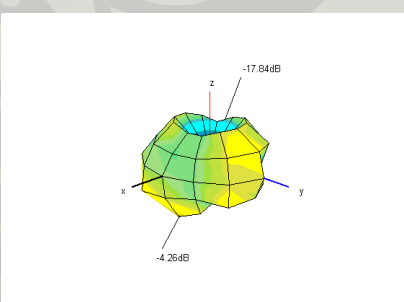


3D gain

	1	2	3	4	5
<b>Frequency [MHz]</b>	2400	2420	2440	2460	2485
<b>Efficiency [dB]</b>	-9.26	-9.05	-8.72	-8.60	-8.55
<b>Efficiency [%]</b>	11.9	12.5	13.4	13.8	14.0
<b>Peak Gain [dB]</b>	-5.32	-4.90	-4.49	-4.43	-4.26
<b>Directivity [dB]</b>	3.93	4.15	4.23	4.18	4.29
<b>Minimum Gain [dB]</b>	-19.26	-20.39	-21.24	-20.64	-17.84

## 2.4G ANT DATA - 3D Radiation Pattern

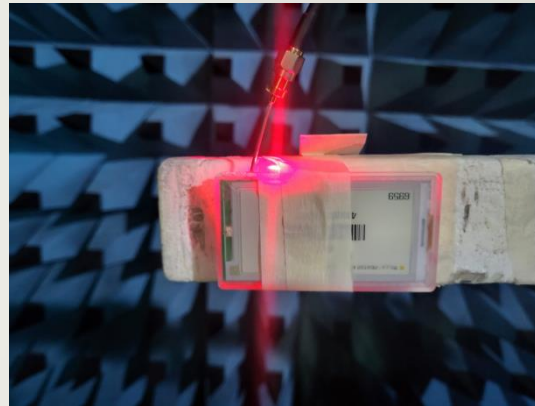
### 3D Radiation Pattern

2400	2420	2440	2460
			
2485			
			

## Measurement Procedure



Network Analyzer을  
이용하여 VSWR 측정



3D Chamber에 Set 거치



Program을 이용하여  
Gain 측정

# Measurement Equipment

## Network Analyzer



**E5071B (Agilent)**



**8753ES (Agilent)**



**CTIA 3D OTA  
Chamber(A+Tech)**