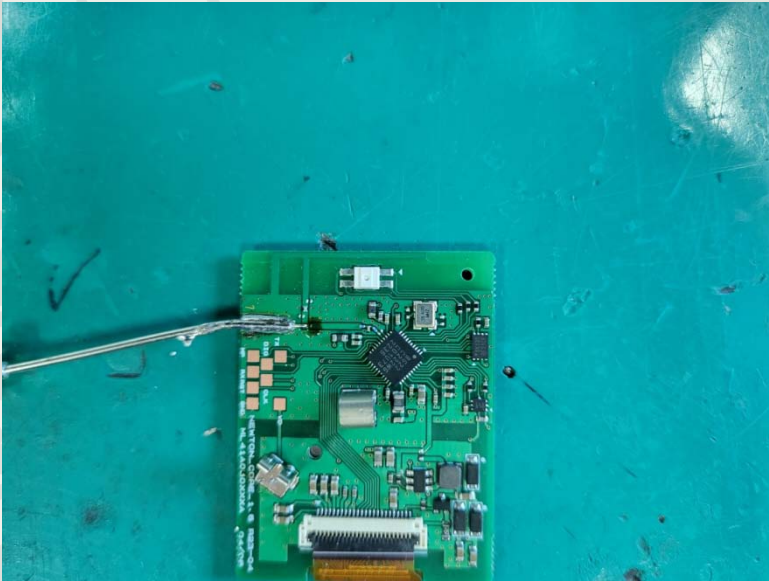
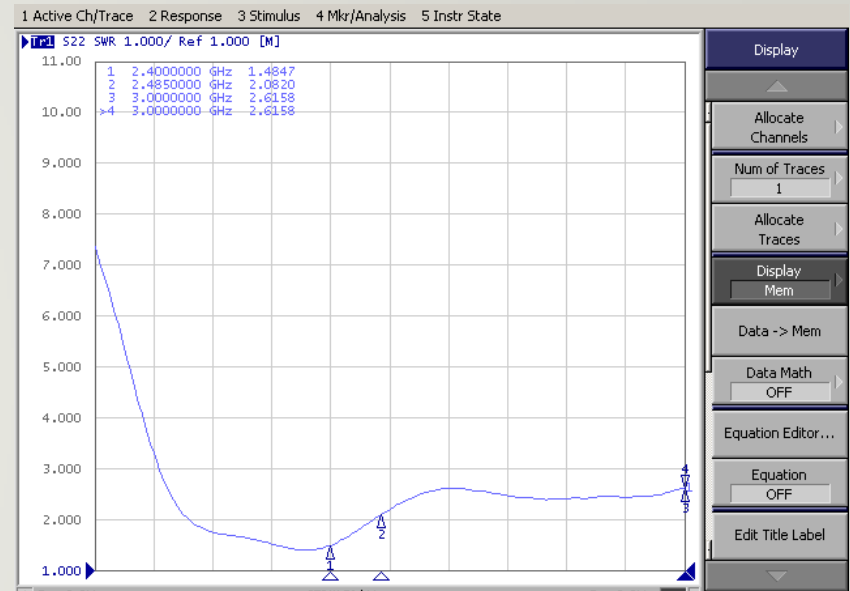


# Solu-M Newton Core Silabs 1.6" TEST DATA

Picture



VSWR

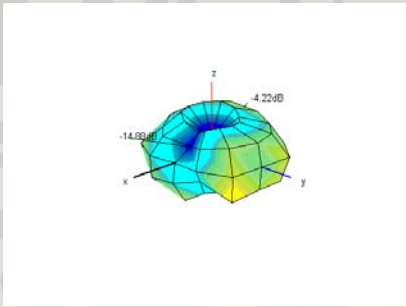
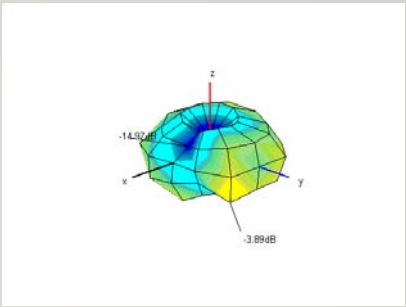
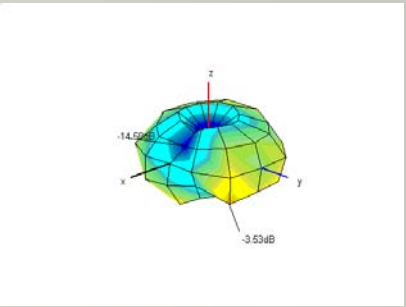
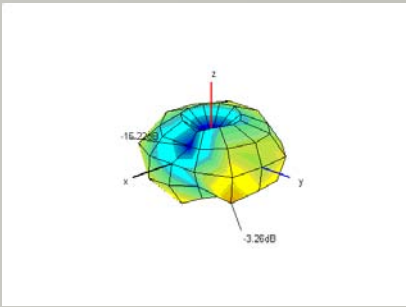
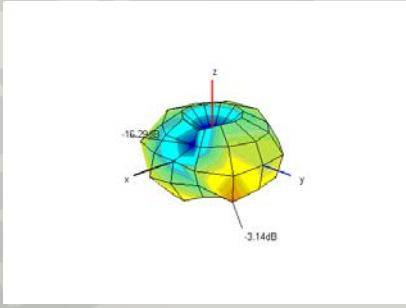


3D gain

	1	2	3	4	5
<b>Frequency [MHz]</b>	2400	2420	2440	2460	2485
<b>Efficiency [dB]</b>	-7.46	-7.18	-6.81	-6.74	-7.05
<b>Efficiency [%]</b>	17.9	19.1	20.9	21.2	19.7
<b>Peak Gain [dB]</b>	-4.22	-3.89	-3.53	-3.26	-3.14
<b>Directivity [dB]</b>	3.24	3.29	3.27	3.48	3.91
<b>Minimum Gain [dB]</b>	-14.88	-14.97	-14.58	-15.22	-16.29

## 2.4G ANT DATA – 3D Radiation Pattern

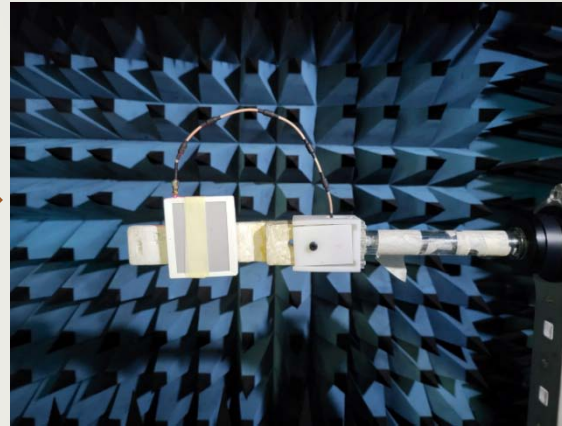
### 3D Radiation Pattern

2400	2420	2440	2460
			
2485			
			

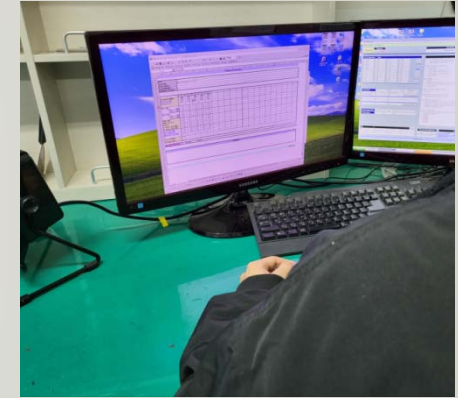
## Measurement Procedure



Network Analyzer을  
이용하여 VSWR 측정



3D Chamber에 Set 거치



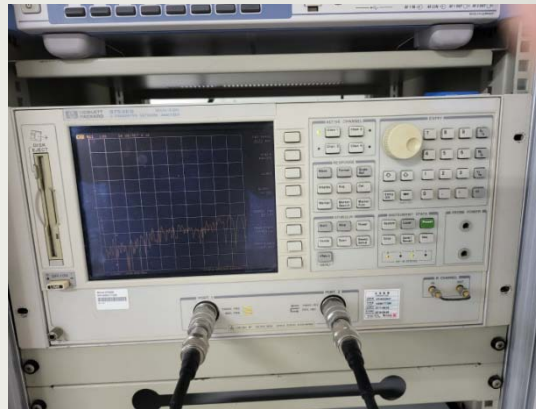
Program을 이용하여  
Gain 측정

# Measurement Equipment

## Network Analyzer



**E5071B (Agilent)**



**8753ES (Agilent)**



**CTIA 3D OTA  
Chamber(A+Tech)**