

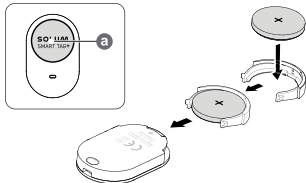
QUICK START GUIDE

CS06FHB01
SoluM SmartTag+

SOLUM

Printed in Vietnam
USA Rev.1.0

English



Copyright © 2021 SoluM Co., Ltd.

Bluetooth® is a registered trademark of Bluetooth SIG, Inc. worldwide.

Other marks are the property of their respective owners.

- Be sure to visit www.mysolum.com to view the device information, full user manual, and the detailed usage precautions before using the product.
- Your consumer rights are governed by the law of the country in which you purchased the product. Please contact your service provider for more information.

To connect a SmartTag to a mobile device, press the button (A) to activate the SmartTag and follow the on-screen instructions to complete the connection.

If the pop-up window does not appear, use a mobile device to scan the QR code on the box.



- Do not use your SmartTag in a hot environment or near a fire.
- Do not swallow or disassemble any battery, chemical burn hazard.
- If the battery from your SmartTag is swallowed it can cause severe internal burns in just 2 hours and can lead to death.
- Keep batteries away from infants and children. If the battery compartment does not close securely, stop using the product and keep it away from infants and children. If you think the batteries might have been swallowed or inserted inside any part of the body, seek immediate medical attention.
- Risk of fire or explosion if the battery is replaced by an incorrect type.

FCC Part 15.19

This device complies with part 15 of the FCC Rules. Operation is subject to the following two conditions: (1) This device may not cause harmful interference, and (2) this device must accept any interference received, including interference that may cause undesired operation.

FCC Part 15.21

Any changes or modifications (including the antennas) to this device that are not expressly approved by the manufacturer may void the user's authority to operate the equipment.

FCC ID is affixed on the rear device case.

CALIFORNIA USA ONLY

This Perchlorate warning applies only to primary CR(Manganese Dioxide) Lithium coin cells in the product sold or distributed ONLY in California USA. "Perchlorate Material-special handling may apply, see www.dtsc.ca.gov/hazardouswaste/perchlorate" Ridgefield Park, New Jersey, 07660

FCC Information to User

This equipment has been tested and found to comply with the limits for a Class B digital device, pursuant to Part 15 of the FCC Rules. These limits are designed to provide reasonable protection against harmful interference in a residential installation. This equipment generates, uses and can radiate radio frequency energy and, if not installed and used in accordance with the instructions, may cause harmful interference to radio communications. However, there is no guarantee that interference will not occur in a particular installation. If this equipment does cause harmful interference to radio or television reception, which can be determined by turning the equipment off and on, the user is encouraged to try to correct the interference by one of the following measures:

- Reorient or relocate the receiving antenna.
- Increase the separation between the equipment and receiver.
- Connect the equipment into an outlet on a circuit different from that to which the receiver is connected.
- Consult the dealer or an experienced radio/TV technician for help.

Caution

THE GRANTEE IS NOT RESPONSIBLE FOR ANY CHANGES OR MODIFICATIONS NOT EXPRESSLY APPROVED BY THE PARTY RESPONSIBLE FOR COMPLIANCE. SUCH MODIFICATIONS COULD VOID THE USER'S AUTHORITY TO OPERATE THE EQUIPMENT.

IMPORTANT NOTE : FCC RF Radiation Exposure Statement

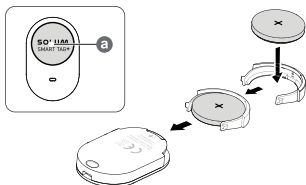
This equipment complies with FCC RF radiation exposure limits set forth for an uncontrolled environment. This equipment should be installed and operated with a minimum distance of 0.5 centimeters between the radiator and your body. This transmitter must not be co-located or operating in conjunction with any other antenna or transmitter.

GUÍA DE INICIO RÁPIDO

CS06FHB01
SoluM SmartTag+

SOLUM

Español (castellano)



Copyright © 2021 SoluM Co., Ltd.
Bluetooth® es una marca comercial registrada de Bluetooth SIG, Inc. en todo el mundo.
Otras marcas son propiedad de sus respectivos propietarios.

- Le sugerimos visitar www.mysolum.com para ver la información del dispositivo, el manual completo del usuario y las precauciones detalladas para el uso antes de utilizar el producto.
- Sus derechos como consumidor se encuentran regidos por la ley del país en el cual haya adquirido el producto. Para solicitar más información, comuníquese con su proveedor de servicios.

Para conectar una SmartTag a un dispositivo móvil, presione la tecla **(a)** para activar SmartTag y siga las instrucciones en pantalla para completar la conexión. Utilice un dispositivo móvil para escanear el código QR del recuadro si no se muestra la ventana emergente.



- No utilice su SmartTag en un entorno caluroso ni cerca de un fuego.
- No ingiera ni desame ninguna batería: Peligro de quemaduras químicas.
- Se podrían provocar quemaduras internas graves en solo 2 horas tras ingerir la batería de su SmartTag, lo cual puede provocar la muerte.
- Mantenga las baterías alejadas de los bebés y de los niños. Si el compartimento de la batería no cierra bien, interrumpa el uso del producto y maténgalo alejado de los bebés y de los niños. Busque atención médica inmediata si cree que las baterías podrían haber sido tragadas o insertadas dentro de cualquier parte del cuerpo.
- Existe el riesgo de incendios o explosión si reemplaza la batería por una del tipo incorrecto.

Sección 15.19 de la FCC

Este dispositivo cumple con la sección 15 de las normas de la Comisión Federal de Comunicaciones (FCC). La operación se encuentra sujeta a las siguientes dos condiciones: (1) el dispositivo no puede provocar interferencia dañina, y (2) este dispositivo deberá aceptar cualquier tipo de interferencia que reciba, inclusive interferencia que pueda provocar un funcionamiento no deseado.

Sección 15.21 de la FCC

Cualquier cambio o modificación (incluyendo las antenas) que se realice a este dispositivo y que no se encuentre expresamente autorizada por el fabricante podría anular la autoridad del usuario para operar el equipo.

La identificación de la FCC está fijada en la carcasa trasera del dispositivo.