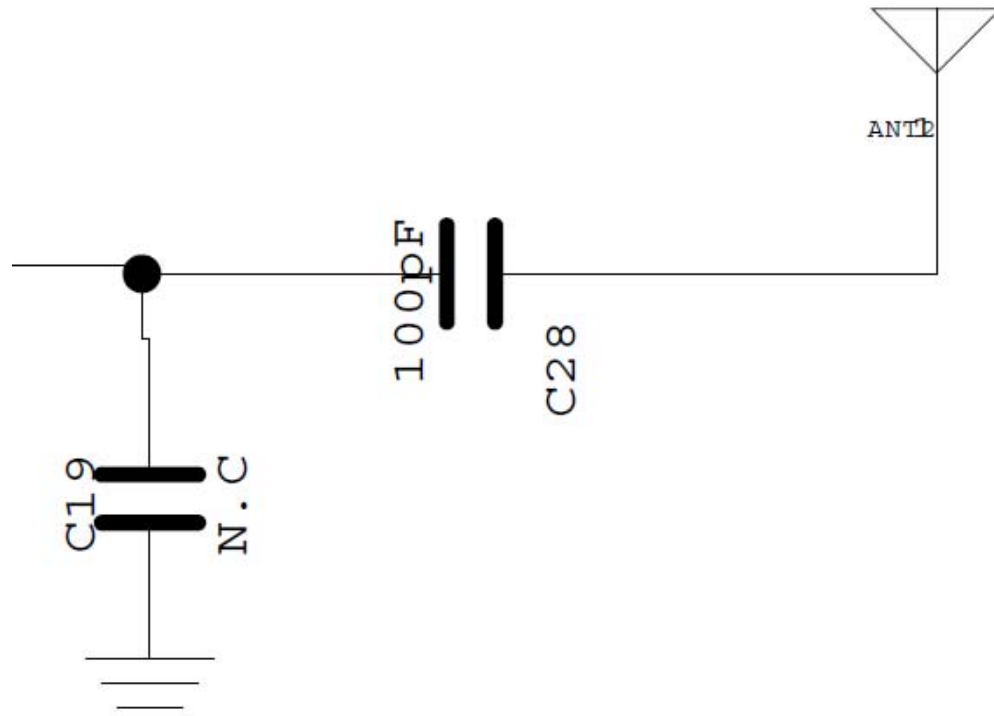
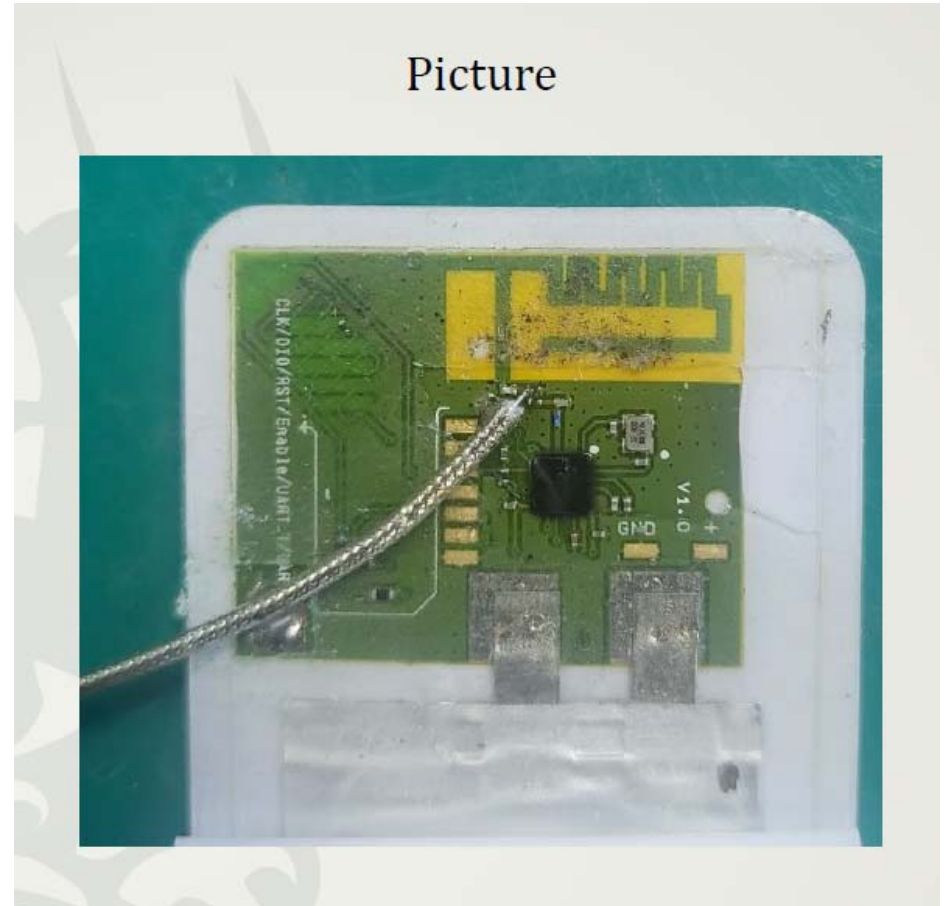


# SoluM “CD16BTS01WXWSM and 2 others”

## 1. TEST condition



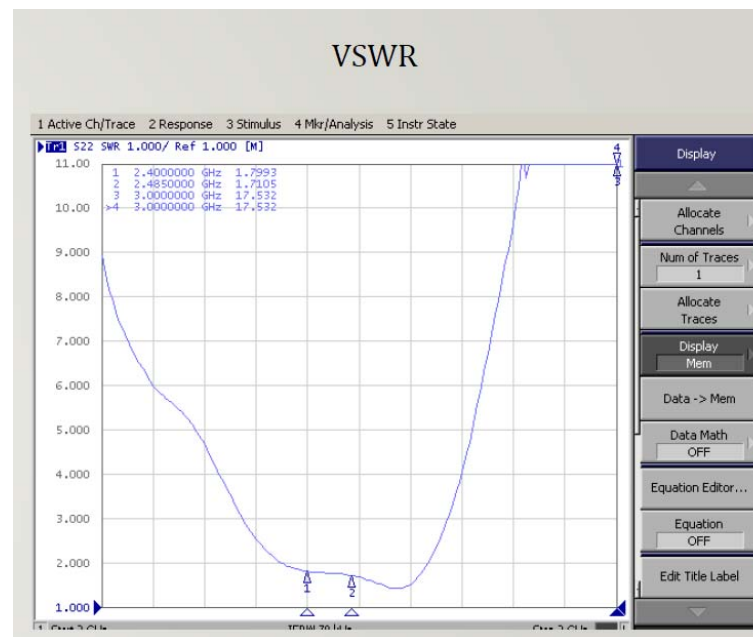
Picture



# SoluM “CD16BTS01WXWSM and 2 others”

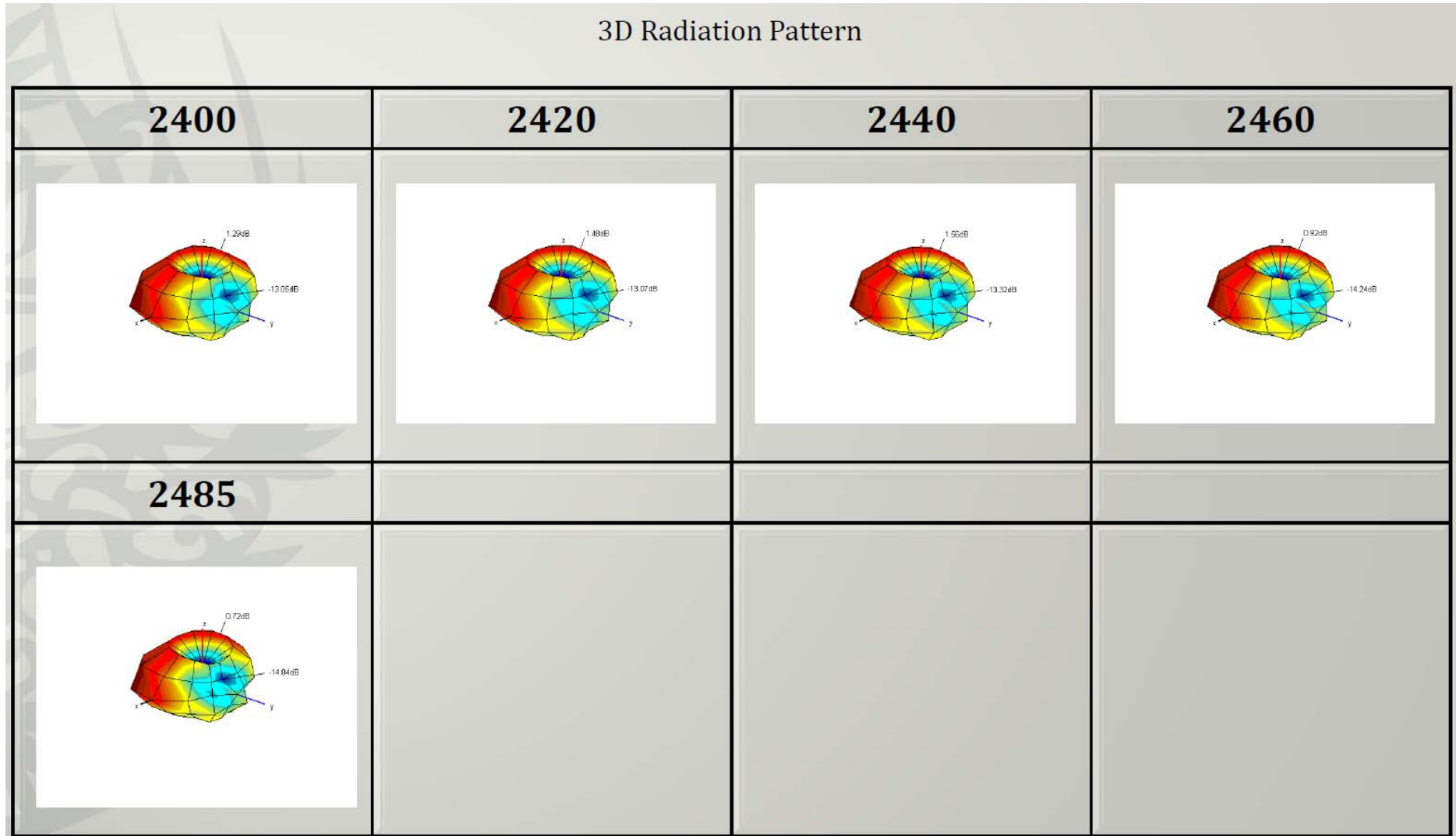
## 2. Passive TEST – VSWR & 3D gain

	1	2	3	4	5
<b>Frequency [MHz]</b>	2400	2420	2440	2460	2485
<b>Efficiency [dB]</b>	-2.78	-2.71	-2.68	-3.29	-3.69
<b>Efficiency [%]</b>	52.7	53.5	53.9	46.9	42.8
<b>Peak Gain [dB]</b>	1.29	1.48	1.56	0.92	0.72
<b>Directivity [dB]</b>	4.07	4.19	4.25	4.21	4.40
<b>Minimum Gain [dB]</b>	-13.05	-13.07	-13.32	-14.24	-14.84



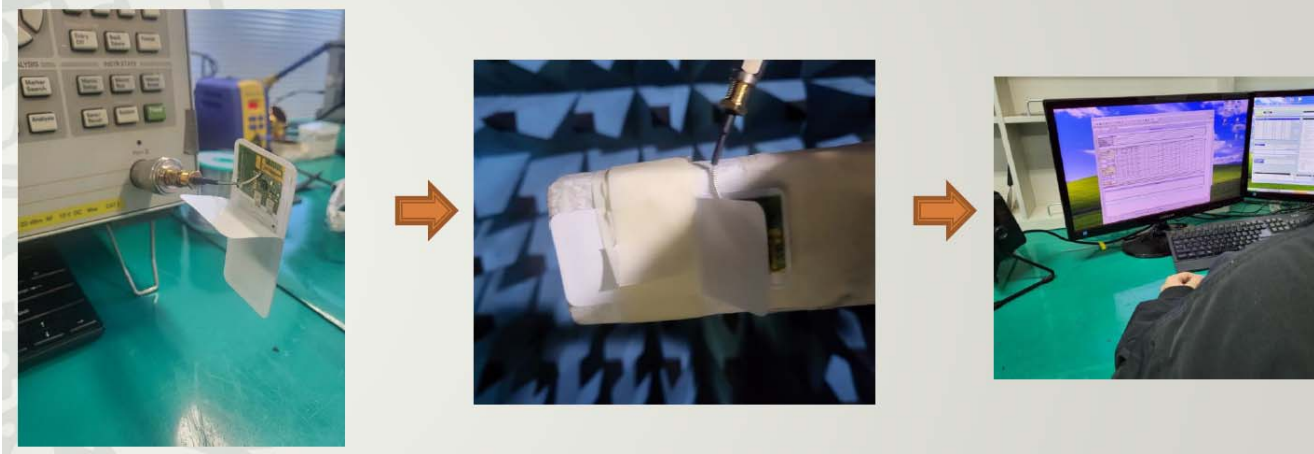
# SoluM “CD16BTS01WXWSM and 2 ohters”

## 3. 3D radiation Pattern



# ART SIGNAL CO., LTD

## A. Measurement Procedure



## B. Measurement Equipment

