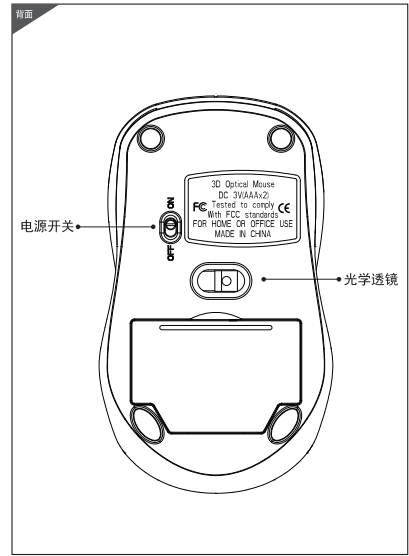
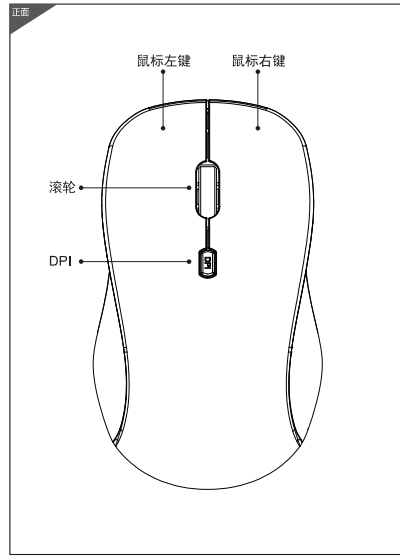


折线

折线

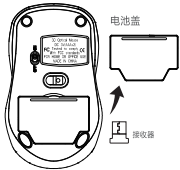
# DM8100 2.4G无线鼠标 用户手册

注意：正确操作本产品，请仔细阅读用户手册。



注意：请按正负极正确安装电池，请勿将电池充电，弃于火中，或将不同类型新旧电池混用，以免电池漏液或爆炸。请将电池存放在阴凉干燥处并远离儿童；电量长的可不使用时，请将电池取出。

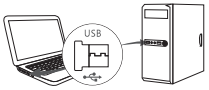
### • 连接使用说明：



1. 请打开鼠标底部的电池盖，取出接收器。



2. 如图所示，装入2节7号电池，再装上电池盖。



3. 将接收器插入有USB口的设备上，电脑识别后即可使用。  
(请确保您的电脑设备USB接口可用)

### 技术规格

产品尺寸：109.83X64.52X30mm      工作距离：10m  
 鼠标重量：60g (不含电池)      工作电流：<11 mA  
 按键个数：4键      休眠时间：30分钟  
 工作电压：3V      待机电流：<0.5 mA  
 速率：800/1200/1600dpi，默认1200      唤醒方式：按键唤醒

### 故障分析

请与售后服务人员联系

### 知识产权信息

未经卖方的许可，禁止复制本用户手册的内容。

### 安全提醒

请不要打开或修理该设备，请不要在潮湿的环境使用该设备。请用干布擦拭该设备。

### 鼠标保养

1. 请勿将设备暴露在液体和潮湿的环境中或使其淋雨，请勿在浴缸、水槽、桑拿房、游泳池或蒸汽房附近使用。
2. 请勿将设备暴露于过高或过低的温度条件下。
3. 请勿长时间放置在阳光直射的地方。
4. 请勿靠近明火，如烹饪用炉、蜡烛或者壁炉。
5. 避免使用锋利器物刮擦产品，及时给产品进行充电或更换干电池以保证正常使用。

## 保修卡

用户填写资料

公司或个人全称 \_\_\_\_\_

通讯地址 \_\_\_\_\_

电话 \_\_\_\_\_ 邮编 \_\_\_\_\_

所购产品名称及型号 \_\_\_\_\_

购买日期 \_\_\_\_\_

本有质保保不涵盖由于以下原因导致的损坏或故障：  
 (1) 意外事件、误用、客户不当或任何未经授权的操作、改装或自行拆卸；  
 (2) 操作或维护不当、使用过程中违反产品说明或连接不恰当的电源；  
 (3) 或者使用并非本公司提供的消耗品（如备用电池），但适用法律禁止此类限制的情况除外。



中文

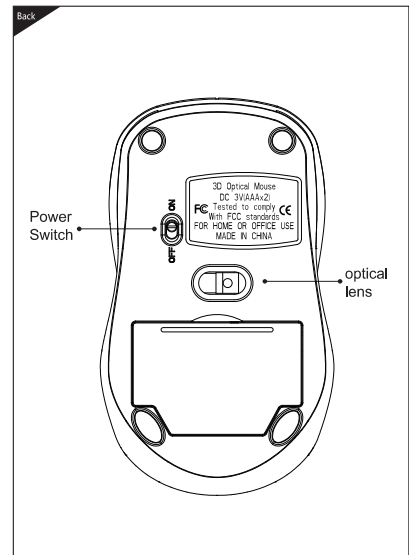
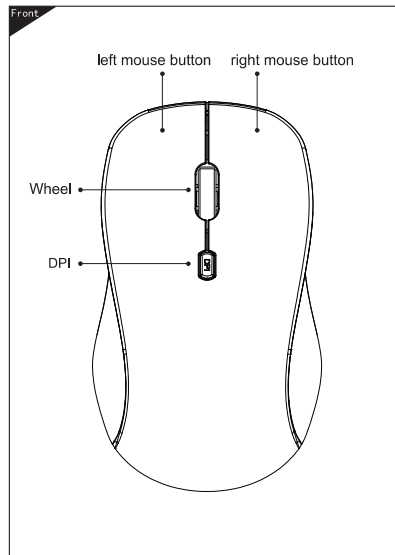
成品尺寸：60x90mm  
 材质：100g双胶纸  
 风琴3折，中文面朝上

# DM8100

## 2.4G Wireless Mouse

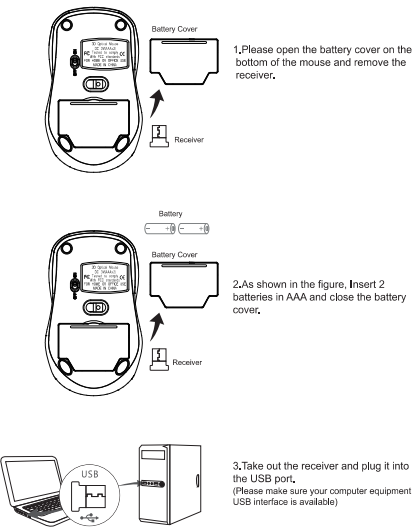
### User's Manual

Note: Please read the user manual carefully before you start using this product



Remark : Please according to the anode and cathode of battery to install batteries, please don't charging the batteries, please don't thrown in the fire, please don't mixture different types' batteries or old and newbatteries, in order to avoid battery leakage or explosion. Please put the battery in a cool and dry place and keep away from children; please take out the battery if the electrical appliance long time out of use.

#### ● Connection instructions:



#### Technical Specifications

- Product Size:109.83X64.52X30mm
- Mouse weight: 60g (without battery)
- Number of keys: 4 keys
- Working voltage: 3V
- Rate: 800/1200/1600dpi,default 1200
- Working distance: 10m
- Working current: <11mA
- Sleep time : 30 minutes
- Awaken way : Press key
- Standby current: <0.5mA

#### Troubleshooting

Please contact the after-sales service.

Copyright  
It is forbidden to reproduce any part of this manual without the permission of seller.

Safety instructions  
Do not open or repair this device, Do not use the device in a damp environment. Clean the device with a dry cloth.

#### Mouse maintenance

- 1.Please keep the keyboard away from liquid or humid environment, saunas, swimming pool,steam room and don't let the keyboard get wet in the rain.
- 2.Please don't expose the keyboard at too high or too low temperature condition.
- 3.Please don't put keyboard under sun for a long time.
- 4.Please don't put keyboard close to the flame, such as cooking stoves, candles or fireplace.
5. Avoid sharp objects scratching products, timely to recharge products to ensure the normal use.

### Warranty Card

#### User information

Company or personage full name \_\_\_\_\_

Contact address \_\_\_\_\_

TEL \_\_\_\_\_ Zip \_\_\_\_\_

The purchased product name and model NO. \_\_\_\_\_

Purchased date \_\_\_\_\_

This reason due to the product broken and damage is not include on the warranty,  
(1) accident, misuse, improper operation, or any unauthorized maintenance, alteration, or disassembly,  
(2) Improper operation or maintenance, violation of product instructions or improper connection of power during use,  
(3) Or use consumables (such as spare batteries) that are not provided by the company but applicable laws Except where such restrictions are prohibited.



#### FCC Statement

Changes or modifications not expressly approved by the party responsible for compliance could void the user's authority to operate the equipment.  
This equipment has been tested and found to comply with the limits for a Class B digital device, pursuant to Part 15 of the FCC Rules. These limits are designed to provide reasonable protection against harmful interference in a residential installation. This equipment generates uses and can radiate radio frequency energy and, if not installed and used in accordance with the instructions, may cause harmful interference to radio communications. However, there is no guarantee that interference will not occur in a particular installation. If this equipment does cause harmful interference to radio or television reception, which can be determined by turning the equipment off and on, the user is encouraged to try to correct the interference by one or more of the following measures:  
— Reorient or relocate the receiving antenna.  
— Increase the separation between the equipment and receiver.  
— Connect the equipment into an outlet on a circuit different from that to which the receiver is connected.  
— Consult the dealer or an experienced radio/TV technician for help  
This device complies with part 15 of the FCC rules. Operation is subject to the following two conditions (1) this device may not cause harmful interference, and (2) this device must accept any interference received, including interference that may cause undesired operation.

#### CE Statement

Herby, Shenzhen DZH Industrial Co., Ltd declares that this 2.4G Wireless Mouse , DM8100 is in compliance with the essential requirements and other relevant provisions of Directive 2014/53/EU. In accordance with Article 10(2) and Article 10(10), this product allowed to be used in all EU member states.  
Use the 2.4G Wireless Mouse in the environment with the temperature between -20 C and 60 C ,  
Operation Frequency: 2402MHz~2480MHz  
Max Output Power:0.0012W  
Manufacturer: Shenzhen DZH Industrial Co., Ltd  
Address: 3th Floor, YiTuo Mike Industrial A building, Bu Yong Industrial D zone, Shajing, Shenzhen, China  
E-mail: ligh@dzhgy.com

#### DECLARATION OF CONFORMITY

I hereby declare that the product  
Product: 2.4G Wireless Mouse  
Model No: DM8100  
Trade Mark: N/A  
Hardware Version: V1.0  
Software Version: V1.0  
(Name of product, type or model, batch or serial number)  
attests that all the technical regulations applicable to the product within the scope of Council Directives 2014/53/EU, 2014/30/EU and 2014/30/EU and declares that the same application has not been issued with any other notified body.  
EN IEC 62368-1:2020+A11:2020  
ETSI EN 301 488 V2.2.3 (2019-11)  
Final draft ETSI EN 301 488 V2.2.3 (2021-11)  
ETSI EN 300 440 V2.2.1 (2018-07)  
EN 60950-1:2017  
EN 62479-2:2016  
(List of normative references, if applicable)  
All essential radio test suites have been carried out.  
NOTIFIED BODY: MCOM Labs Inc  
Address:  
378 Boulder Court,  
Pleasanton, California 94566,  
USA,  
Identification Number: 2280  
MANUFACTURER or AUTHORISED REPRESENTATIVE:  
Address:  
Shenzhen DZH Industrial Co., Ltd  
3th Floor, YiTuo Mike Industrial A building, Bu Yong Industrial D zone, Shajing, Shenzhen,  
China  
This declaration is issued under the sole responsibility of the manufacturer and, if applicable, his authorized representative.  
Point of contact:  
Anna Li: 00755-29951078/00755-29951079  
(Name, telephone and fax number)  
China, 2022-07-04  
(Place, date of issue)  
Annie Li  
(Signature)  
Annie Li, Manager  
(Name and title in block letters)