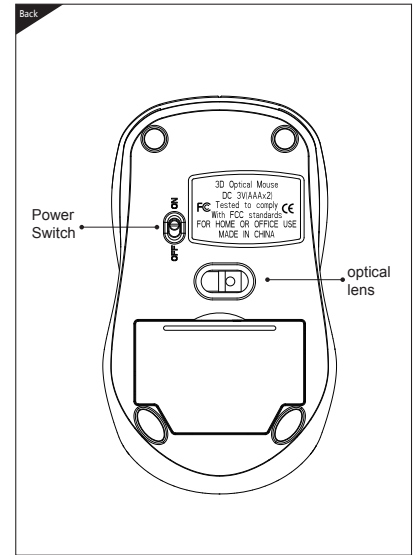
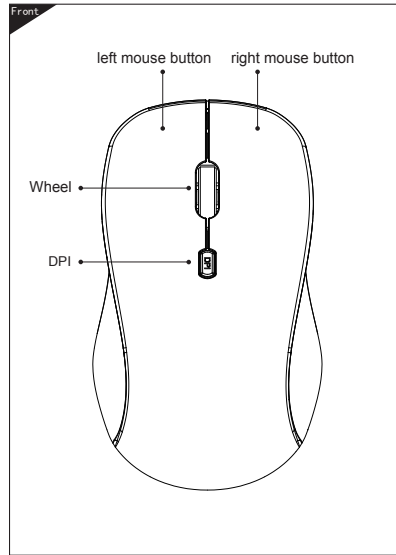


# DM8100

## 2.4G Wireless Mouse

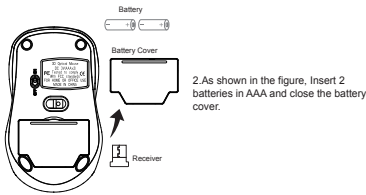
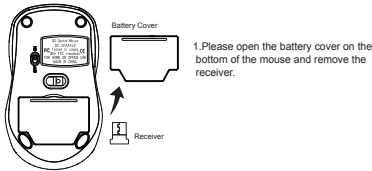
### User's Manual

Note: Please read the user manual carefully before you start using this product



Remark: Please according to the anode and cathode of battery to install batteries, please don't charging the batteries, please don't thrown in the fire, please don't mixture different types, batteries or old and newbatteries, in order to avoid battery leakage or explosion. Please put the battery in a cool and dry place and keep away from children, please take out the battery if the electrical appliance long time out of use.

#### ● Connection instructions:



#### Technical Specifications

- Product Size: 109.83X64.52X30mm
- Mouse weight: 60g (without battery)
- Working voltage: 3V
- Rate: 800/1200/1600dpi
- Working distance: 10m
- Working current: <10mA
- Sleep time : 10 minutes
- Awaken way : Press key
- Sleep current : 0.02mA

**Troubleshooting**  
Please contact the after-sales service.

**Copyright**  
It is forbidden to reproduce any part of this manual without the permission of seller.

**Safety instructions**  
Do not open or repair this device, Do not use the device in a damp environment. Clean the device with a dry cloth.

#### Mouse maintenance

1. Please keep the keyboard away from liquid or humid environment, saunas, swimming pool, steam room and don't let the keyboard get wet in the rain.
2. Please don't expose the keyboard at too high or too low temperature condition.
3. Please don't put keyboard under sun for a long time.
4. Please don't put keyboard close to the flame, such as cooking stoves, candles or fireplace.
5. Avoid sharp objects scratching products, timely to recharge products to ensure the normal use.

## Warranty Card

User information

Company or personage full name \_\_\_\_\_

Contact address \_\_\_\_\_

TEL \_\_\_\_\_ Zip \_\_\_\_\_

The purchased product name and model NO. \_\_\_\_\_

Purchased date \_\_\_\_\_

This reason due to the product broken and damage is not include on the warranty.  
(1) accidents, misuse, improper operation, or any unauthorized maintenance, alteration, or disassembly;  
(2) improper operation or maintenance, violation of product instructions or improper connection of power during using;  
(3) Or use consumables (such as spare batteries) that are not provided by the company but applicable laws except where such restrictions are prohibited.



#### CE Statement

Herby, Shenzhen DZH Industrial Co., Ltd declares that this 2.4G Wireless Mouse, DM8100 is in compliance with the essential requirements and other relevant provisions of Directive 2014/53/EU. In accordance with Article 10(2) and Article 10(10), this product allowed to be used in all EU member states. Use the 2.4G Wireless Mouse in the environment with the temperature between 0°C and 60°C. The product shall only be connected to a USB interface of version USB2.0

Operation Frequency: 2405MHz ~ 2470MHz  
Max Output Power: 0.0028W

Manufacturer: Shenzhen DZH Industrial Co., Ltd  
Address: 3th Floor, YiTuo Mike Industrial A building, Bu Yong Industrial D zone, Shajing, Shenzhen, China  
E-mail: ligh@dzhgy.com

#### DECLARATION OF CONFORMITY

I hereby declare that the product

Product: 2.4G Wireless Mouse  
Model No.: DM8100  
Trade Mark: N/A  
Hardware Version: V1.3  
Software Version: 5.3

(Name of product, type or model, batch or serial number)

satisfies all the technical regulations applicable to the product within the scope of Council Directives 2014/53/EU, 2014/30/EU and 2014/30/EU; and declare that the same application has not been lodged with any other notified body.

EN IEC 62368-1:2020+A11:2020  
ETSI EN 301 488-1 V2.2.3 (2018-11)  
Final draft ETSI EN 301 488-3 V2.2.0 (2021-11)  
ETSI EN 300 440 V2.1 (2018-07)  
EN 50663:2017  
EN 62479:2019

(Title(s) of regulations, standards, etc.)

All essential radio test suites have been carried out.

NOTIFIED BODY: MCOM Labs Inc

Address: \_\_\_\_\_  
575 Boulder Court,  
Pleasanton, California 94566,  
USA,  
Identification Number: 2280

MANUFACTURER or AUTHORISED REPRESENTATIVE

Address: \_\_\_\_\_  
Shenzhen DZH Industrial Co., Ltd  
3th Floor, YiTuo Mike Industrial A building, Bu Yong Industrial D zone, Shajing, Shenzhen, China

This declaration is issued under the sole responsibility of the manufacturer and, if applicable, his authorized representative.

Point of contact:

Annie Li 860755-29951078/860755-29951079  
(Name, telephone and fax number)

China 2022-04-29  
(Place, date of issue)

Annie Li  
(Signature)  
Annie Li, Manager  
(Name and title in block letters)

#### FCC Statement

Changes or modifications not expressly approved by the party responsible for compliance could void the user's authority to operate the equipment.

This equipment has been tested and found to comply with the limits for a Class B digital device, pursuant to Part 15 of the FCC Rules. These limits are designed to provide reasonable protection against harmful interference in a residential installation. This equipment generates uses and can radiate radio frequency energy and, if not installed and used in accordance with the instructions, may cause harmful interference to radio communications. However, there is no guarantee that interference will not occur in a particular installation. If this equipment does cause harmful interference to radio or television reception, which can be determined by turning the equipment off and on, the user is encouraged to try to correct the interference by one or more of the following measures:

- Reorient or relocate the receiving antenna.
  - Increase the separation between the equipment and receiver.
  - Connect the equipment into an outlet on a circuit different from that to which the receiver is connected.
  - Consult the dealer or an experienced radio/TV technician for help
- This device complies with part 15 of the FCC rules. Operation is subject to the following two conditions (1) this device may not cause harmful interference, and (2) this device must accept any interference received, including interference that may cause undesired operation.