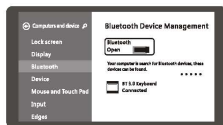
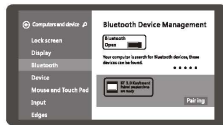
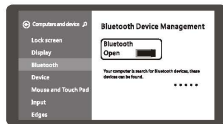
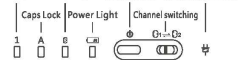


• Win8 Connection Instructions:

Number keys Bluetooth Light Power Switch Charging indicator



When contact 2 devices on the same time, toggle $\text{Fn} + \text{F2}$ switch key, that could switch to paired device freely.

1. please open the power switch on the right top of keyboard, press it 1s to open the power switch (press 4s to close the power switch).

2. press $\text{Fn} + \text{F2}$ matching code key, the blue light will twinkle ,then the device into searching and matching.

3. On the start page open the "setting" "charge the computer setting" "open the "Bluetooth" .

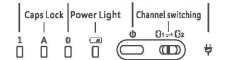
4. Open the "Bluetooth" into searching, then you will find "BT 3.0 Keyboard" click to next step.

5. According to the table PC tips to input the correct password then click "Enter" button.

6. There have a tip for connecting successfully ,you can use your keyboard comfortably .

• iOS Connection Instructions:

Number keys Bluetooth Light Power Switch Charging indicator



When contact 2 devices on the same time, toggle $\text{Fn} + \text{F2}$ switch key, that could switch to paired device freely.

1. please open the power switch on the right top of keyboard, press it 1s to open the power switch (press 4s to close the power switch).

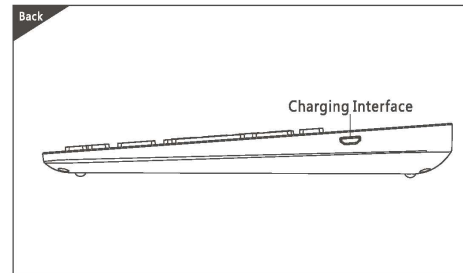
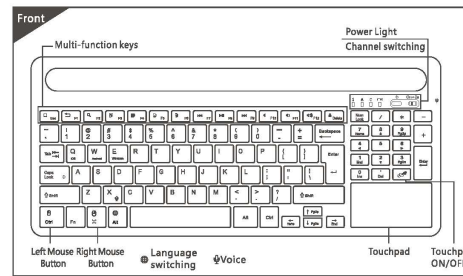
2. press $\text{Fn} + \text{F2}$ matching code key, the blue light will twinkle ,then the device into searching and matching.

3. Click the "Setting" on the iPad .then open the "Bluetooth" .

4. Open the "Bluetooth" into searching, then you will find "BT 3.0 Keyboard" click to next step.

5. According to the table PC tips to input the correct password then click "Enter" button.

6. There have a tip for connecting successfully ,you can use your keyboard comfortably .



We hereby declare that (all essential radio test suites have been carried out and that) the above named product is in conformity to all the essential requirements of Directive 1999/5/EC. The product carries the CE Mark: CE0168

Normal working environment : - 25°C + 65°C

Bluetooth™

B021 Multi-channel Universal Desktop Slot Keyboard For Tablet PC User Manual

Notice : Please read use manual carefull before you start use this product.

Warranty Card

User information

Company or personage full name

Contact address

TEL Zip

The purchased product name and model NO.

Purchased date

This reason due to the product broken and damage is not include on the warranty.

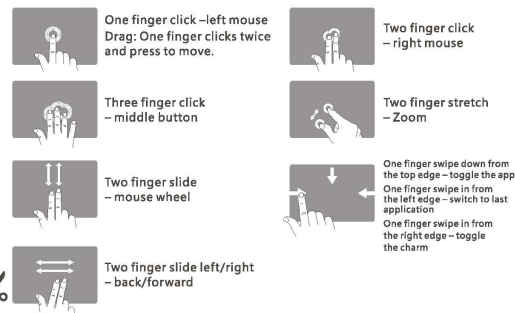
- (1) Accident, misuse, improper operation, or any unauthorized repair, modified or removed
- (2) Improper operation or maintenance, when operation violation of the instructions or connection unsuitability power supply.



Three System Function Key Combinations (fn+)

Fn+ iOS Apple iOS System		Fn+ Android Switch to Android System		Fn+ Win Switch to Win System			
$\text{Fn} + \text{Esc}$	Return to desktop	$\text{Fn} + \text{Esc}$	Return to desktop	Esc	Exit	$\text{Fn} + \text{Esc}$	Return to desktop
$\text{Fn} + \text{F1}$	Return to the previous page	$\text{Fn} + \text{F1}$	Return to the previous page	F1	Help	$\text{Fn} + \text{F1}$	Return to the previous page
$\text{Fn} + \text{F2}$	Search	$\text{Fn} + \text{F2}$	Search	F2	Rename	$\text{Fn} + \text{F2}$	Search
$\text{Fn} + \text{F3}$	Select	$\text{Fn} + \text{F3}$	Select	F3	Search	$\text{Fn} + \text{F3}$	Select
$\text{Fn} + \text{F4}$	Cut	$\text{Fn} + \text{F4}$	Cut	F4	Address	$\text{Fn} + \text{F4}$	Cut
$\text{Fn} + \text{F5}$	Paste	$\text{Fn} + \text{F5}$	Paste	F5	Refresh	$\text{Fn} + \text{F5}$	Paste
$\text{Fn} + \text{F8}$	Copy	$\text{Fn} + \text{F8}$	Copy	F6	Switch	$\text{Fn} + \text{F8}$	Copy
$\text{Fn} + \text{F7}$	Progress	$\text{Fn} + \text{F7}$	Progress	F7	Specialize for DOS	$\text{Fn} + \text{F7}$	Progress
$\text{Fn} + \text{F8}$	Play/Pause	$\text{Fn} + \text{F8}$	Play/Pause	F8	Start option	$\text{Fn} + \text{F8}$	Play/Pause
$\text{Fn} + \text{F9}$	Next	$\text{Fn} + \text{F9}$	Next	F9	Local Computational Formula	$\text{Fn} + \text{F9}$	Next
$\text{Fn} + \text{F10}$	Mute	$\text{Fn} + \text{F10}$	Mute	F10	Activates menu	$\text{Fn} + \text{F10}$	Mute
$\text{Fn} + \text{F11}$	Volume-	$\text{Fn} + \text{F11}$	Volume-	F11	Switch to full screen	$\text{Fn} + \text{F11}$	Volume-
$\text{Fn} + \text{F12}$	Volume+	$\text{Fn} + \text{F12}$	Volume+	F12	Save word document	$\text{Fn} + \text{F12}$	Volume+
$\text{Fn} + \text{Del}$	Lock	$\text{Fn} + \text{Del}$	Lock	Delete	Delete	$\text{Fn} + \text{Del}$	Lock

Touchpad Functions



Technical Specifications

- Keyboard size : 370X164.5X22.3mm
- Touchpad size : 71.7X38.9mm
- Working distance : 10M
- Weight : 600g
- Keyboard layout : 96Keys
- Sleep time : Ten minutes
- Awaken way : Arbitrarily key to awaken
- Battery capacity : 180mAH
- Charging current : >250mA
- Charging time : 2H
- Working voltage : 3.7V
- Low voltage alarm : $\leq 3.2V$
- Standby current : 0.25mA
- Sleep current : 0.1mA
- Use touchpad the working current : 6.8mA
- Use key the working current : 2.0mA

Status Display LED

- Open the power switch ,blue light twinkle and crush out .
- Match code indication, press the "CONNECT" switch, blue light twinkle quickly.
- Match code success, blue light crush out.
- Low voltage indication: when the voltage below 3.2V, the red light twinkle.

Troubleshooting

Please contact the after-sales service.

Copyright

It is forbidden to reproduce any part of this quick start guide without the permission of seller.

Safety instructions

Do not open or repair this device. Do not use the device in a damp environment. Clean the device with a dry cloth.

Warranty

The device is provided with one-year limited hardware warranty from the purchase day.

Keyboard Maintenance

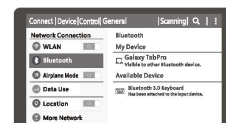
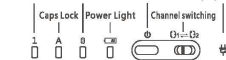
1. Please keep the keyboard away from liquid or humid environment, saunas, swimming pool, steam room and don't let the keyboard get wet in the rain.
2. Please don't expose the keyboard at too high or too low temperature condition.
3. Please don't put keyboard under sun for a long time.
4. Please don't put keyboard close to the flame, such as cooking stoves, candles or fireplace.
5. Avoid sharp objects scratching products, timely to recharge or replace the dry cell products to ensure the normal use.

FAQ

1. The tablet PC can't connect the BT keyboard ?
1) At first check the BT keyboard is into match code state, then open the table PC Bluetooth searching.
- 2) Checking the BT keyboard Battery is enough, the battery low is also lead to can't connect, you need charge.
2. The keyboard indication light always flashing when use?
Keyboard indication always flashing when use, is means the battery will be no power, please charge the power as soon as quickly.
3. The table PC display BT keyboard is disconnect?
The BT keyboard will into dormant to save the battery after some time later no use; press any key the BT keyboard will be awaken and working.

• Android Connection Instructions:

Number keys Bluetooth Light Power Switch Charging indicator



1. please open the power switch on the right top of keyboard ,press it 1s to open the power switch (press 4s to close the power switch).

2. press $\text{Fn} + \text{F2}$ matching code key, the blue light will twinkle ,then the device into searching and matching.

3. On the start page open the "setting" then open the "Bluetooth."

4. Open the "Bluetooth" into searching, then you will find "BT 3.0 Keyboard" click to next step.

5. According to the table PC tips to input the correct password then click "Enter" button.

6. There have a tip for connecting successfully ,you can use your keyboard comfortably .

When contact 2 devices on the same time, toggle $\text{Fn} + \text{F2}$ switch key, that could switch to paired device freely.

Remarks : After connecting successfully the next time you don't need match code, just open the Bluetooth keyboard power switch and the tablet PC "Bluetooth." The BT keyboard will search the device and automatic connects.

This device complies with Part 15 of the FCC Rules. Operation is subject to the following two conditions:

- (1) this device may not cause harmful interference, and
- (2) this device must accept any interference received, including interference that may cause undesired operation.

This device and its antenna(s) must not be co-located or operating in conjunction with any other antenna transmitter.

Changes or modifications not expressly approved by the party responsible for compliance could void the user's authority to operate the equipment.

Note:

This equipment has been tested and found to comply with the limits for a Class B digital device, pursuant to part 15 of the FCC Rules. These limits are designed to provide reasonable protection against harmful interference in a residential installation. This equipment generates, uses and can radiate radio frequency energy and, if not installed and used in accordance with the instructions, may cause harmful interference to radio communications. However, there is no guarantee that interference will not occur in a particular installation. If this equipment does cause harmful interference to radio or television reception, which can be determined by turning the equipment off and on, the user is encouraged to try to correct the interference by one or more of the following measures:

- Reorient or relocate the receiving antenna.
- Increase the separation between the equipment and receiver.
- Connect the equipment into an outlet on a circuit different from that to which the receiver is connected.
- Consult the dealer or an experienced radio/TV technician for help.