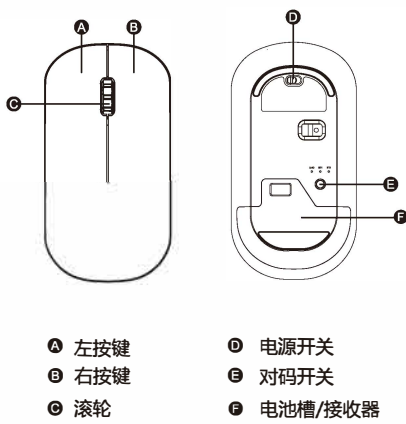


2.4G+ 蓝牙双模鼠标 说明书

注意：正确操作本产品，请仔细阅读用户手册。

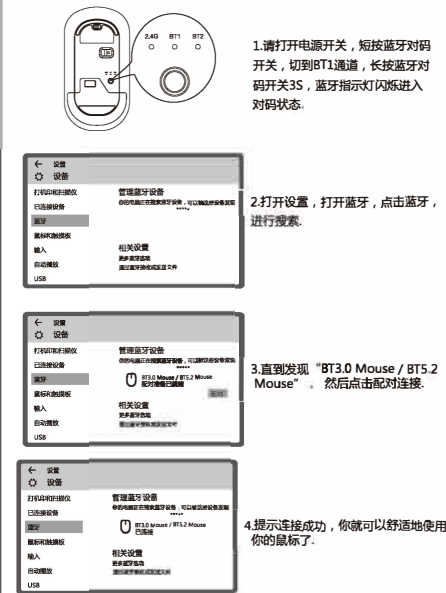
鼠标示意图



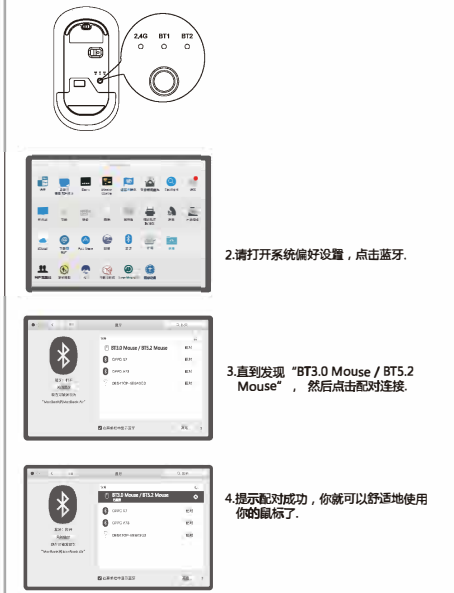
2.4G连接使用说明:



蓝牙模式连接使用说明：(Win10)



蓝牙模式连接使用说明：(MasOS)



蓝牙模式连接使用说明：(Android)



技术规格

产品尺寸: 111 X 59 X 30 mm
鼠标重量: 56 g
2.4G 工作电流: <16 mA
2.4G 待机电流: <0.7 mA
速率: 1200

蓝牙 工作电流: <12 mA
蓝牙 待机电流: <0.7 mA
休眠时间: 10 分钟
唤醒方式: 按键唤醒
休眠电流: 60 uA
按键个数: 3 键
休眠时间: 10 分钟
唤醒方式: 按键唤醒
休眠电流: 60 uA

故障分析

请与售后服务人员联系

知识产权信息

未经本公司的许可，禁止复制本用户手册的内容。

安全提醒

请不要打开或修理该设备，请不要在潮湿环境中使用该设备，请用干布擦拭该设备。

质保条款

本设备自购买之日起，提供1年保修服务。

鼠标保养

1. 请勿将设备暴露在液体和潮湿的环境中或使其淋雨，请勿在浴缸、水槽、桑拿房、游泳池或蒸汽房附近使用。
2. 请勿将设备暴露于过高或过低的温度下。
3. 请勿长时间放置在阳光直射的地方。
4. 请勿靠近明火，如烹饪用炉、蜡烛或者壁炉。
5. 避免使用锋利器物刮擦产品，及时给产品进行充电以保证正常使用。

保修卡

用户填写资料

公司或个人全称 _____

通讯地址 _____

电话 _____ 邮编 _____

所购产品名称及型号 _____

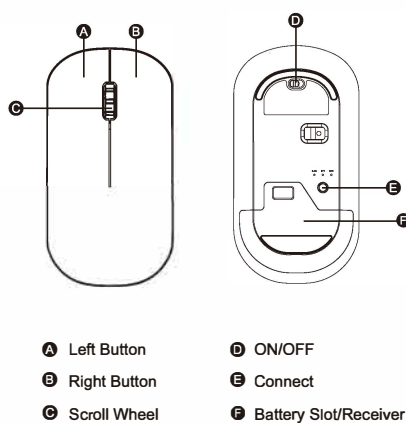
购买日期 _____

本保修卡不适用于以下原因造成的产品故障：
(1) 意外事件、误用、操作不当或任何未经授权的操作、拆卸或改装；
(2) 用户未按本手册使用，或因非正常使用造成产品损坏或性能下降；
(3) 或者使用非本公司提供的消耗品（如电池等），但适用法律法规规定的其他情况除外。

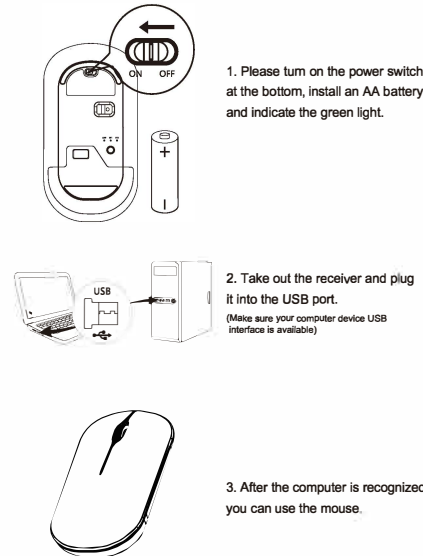
Bluetooth & 2.4GHz Wireless Slim Mouse User's manual

Note: Please read the user manual carefully before you start using this product

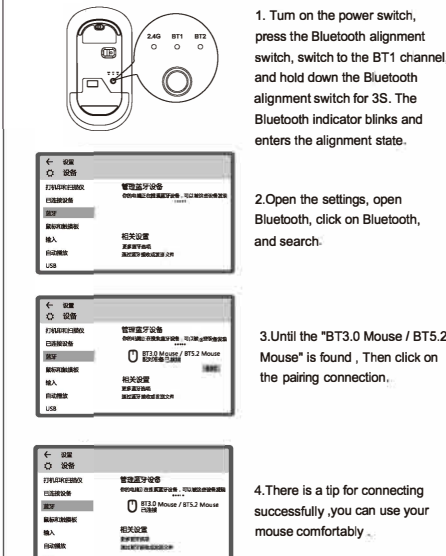
Mouse schematic



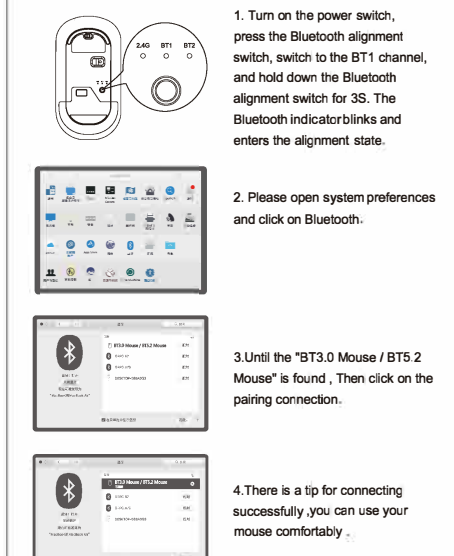
2.4G Connection instructions:



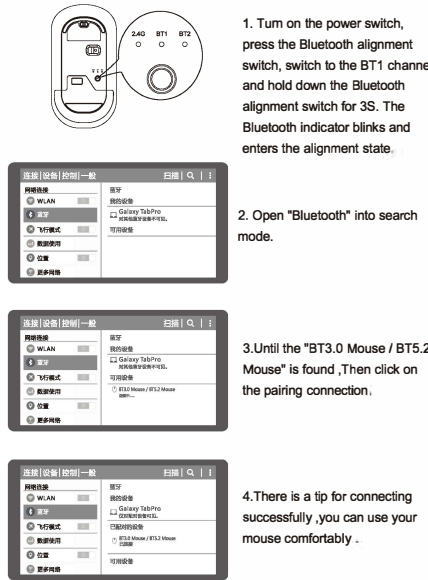
Bluetooth Connection With System (Win10)



Bluetooth Connection With System (MasOS)



Bluetooth Connection With System (Android)



Technical Specifications

Product size: 111 X 59 X 30 mm
2.4G working current: <16 mA
2.4G standby current: <0.7 mA
Bluetooth working current: <12 mA
Bluetooth standby current: <0.7 mA
Sleep time: 10 minutes
Awaken way: Press key
Sleep current: 60 uA

Number of keys: 3 keys
Mouse weight: 56 g
DPI: 1200

Troubleshooting

Please contact the after-sales service.

Copyright

It is forbidden to reproduce any part of this manual without the permission of seller.

Safety instructions

Do not open or repair this device. Do not use the device in a damp environment. Clean the device with a dry cloth.

Warranty

The device is provided with one-year limited hardware warranty from the purchase day.

Mouse Maintenance

1. Please keep the keyboard away from liquid or humid environment, saunas, swimming pool, steam room and don't let the keyboard get wet in the rain.
2. Please don't expose the keyboard at too high or too low temperature condition.
3. Please don't put keyboard under sun for a long time.
4. Please don't put keyboard close to the flame, such as cooking stoves, candles or fireplace.
5. Avoid sharp objects scratching products, timely to recharge products to ensure the normal use.

FCC Statement

Changes or modifications not expressly approved by the party responsible for compliance could void the user's authority to operate the equipment. This equipment has been tested and found to comply with the limits for a Class B digital device, pursuant to Part 15 of the FCC Rules. These limits are designed to provide reasonable protection against harmful interference in a residential installation. This equipment generates uses and can radiate radio frequency energy and, if not installed and used in accordance with the instructions, may cause harmful interference to radio communications. However, there is no guarantee that interference will not occur in a particular installation. If this equipment does cause harmful interference to radio or television reception, which can be determined by turning the equipment off and on, the user is encouraged to try to correct the interference by one or more of the following measures:
-- Reorient or relocate the receiving antenna.
-- Increase the separation between the equipment and receiver.
-- Connect the equipment into an outlet on a circuit different from that to which the receiver is connected.
-- Consult the dealer or an experienced radio/TV technician for help. This device complies with part 15 of the FCC rules. Operation is subject to the following two conditions (1) this device may not cause harmful interference, and (2) this device must accept any interference received, including interference that may cause undesired operation.

Warranty Card

User information

Company or personage full name _____

Contact address _____

TEL _____ Zip _____

The purchased product name and model NO. _____

Purchased date _____

This reason due to the product defect and damage is not include on the warranty.
(1) accident, misuse, improper operation, or any unauthorized maintenance, alteration, or disassembly;
(2) improper operation or maintenance, violation of product instructions or improper connection of power during use;
(3) Or use consumables (such as spare batteries) that are not provided by the company but applicable laws require where such restrictions are applicable.