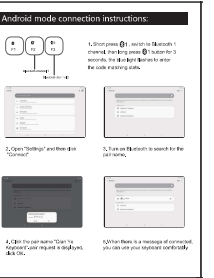
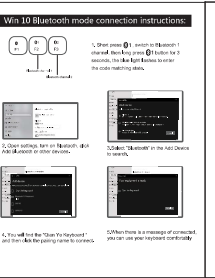
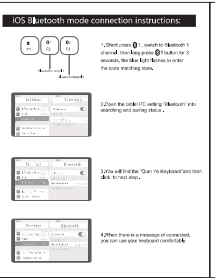
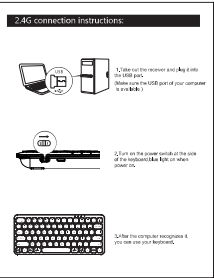
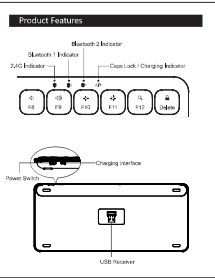


Dual mode wireless keyboard

User's Manual

Compatible System
Windows/Android

Note: Please read the user manual carefully before you start using the product.



EU: This device is compliant with the essential requirements and other related provisions of Directive 2014/53/EU. We warrant that data and notes have been correctly checked. This statement will not constitute an assurance of absence of defects. The device can be used under certain specific conditions (e.g. for use in a vehicle or for use in a specific environment). The manufacturer is not responsible for any damage or injury caused by the use of the device. Please read the user manual carefully before you start using the product.

Multimedia function

OS/Android	iPhone	Windows
1. [M] (Mute)	1. [M] (Mute)	1. [M] (Mute)
2. [V] (Volume Up)	2. [V] (Volume Up)	2. [V] (Volume Up)
3. [V] (Volume Down)	3. [V] (Volume Down)	3. [V] (Volume Down)
4. [P] (Previous)	4. [P] (Previous)	4. [P] (Previous)
5. [N] (Next)	5. [N] (Next)	5. [N] (Next)
6. [H] (Home)	6. [H] (Home)	6. [H] (Home)
7. [B] (Back)	7. [B] (Back)	7. [B] (Back)
8. [X] (Close)	8. [X] (Close)	8. [X] (Close)
9. [W] (Search)	9. [W] (Search)	9. [W] (Search)
10. [Q] (Power)	10. [Q] (Power)	10. [Q] (Power)
11. [E] (Exit)	11. [E] (Exit)	11. [E] (Exit)
12. [D] (Delete)	12. [D] (Delete)	12. [D] (Delete)
13. [C] (Copy)	13. [C] (Copy)	13. [C] (Copy)
14. [V] (Paste)	14. [V] (Paste)	14. [V] (Paste)
15. [F] (Function)	15. [F] (Function)	15. [F] (Function)
16. [G] (Game)	16. [G] (Game)	16. [G] (Game)
17. [T] (Tab)	17. [T] (Tab)	17. [T] (Tab)
18. [R] (Refresh)	18. [R] (Refresh)	18. [R] (Refresh)
19. [S] (Sleep)	19. [S] (Sleep)	19. [S] (Sleep)
20. [W] (Wake)	20. [W] (Wake)	20. [W] (Wake)

Three system switching languages

Windows: **F12** (Switch language) **Ctrl** (Close key) **Fn** (Keyboard)

Android: **Ctrl** (Close key) **Fn** (Keyboard)

Technical Specifications

Keyboard size: 298 x 133 x 24.2 mm
 Weight: 445g
 Working distance: $\le 10m$
 Lifetime battery capacity: 180 mAh
 Working voltage: 3.6V/4.2V
 Charging specifications: 5V/500mA
 Features: 24 keys

Status Display LED

- Charging indicator: When status is **Blue** in one of the same time, stand power on (LED) to switch, you can find system for the connected device.
- Charging indicator: When status is **Red** in one of the same time, stand power on (LED) to switch, you can find system for the connected device.
- Low battery indicator: When status is **Yellow** in one of the same time, stand power on (LED) to switch, you can find system for the connected device.
- Clean Lock indicator: green light

Typing/Repeating

Please contact the manufacturer's service.

Copyright

It is forbidden to reproduce any part of this manual without the permission of the publisher.

Safety Instructions

Do not use the device in a vehicle. Do not use the device in a damp environment. Do not use the device in an open flame.

Warranty

The device is provided with One-Year Warranty. Please refer to the purchase title.

Keyboard Maintenance

- Wipe the keyboard with a dry cloth.
- Do not use harsh chemicals or alcohol to clean the keyboard.
- Do not use the keyboard under high temperature conditions.
- Do not use the keyboard under high humidity conditions.
- Do not use the keyboard under high pressure conditions.

Do not use any other cleaning products. Please refer to the manufacturer's website.

FAQ

- The keyboard is not connected to the PC.
 - Check the Bluetooth settings on the PC.
 - Check the Bluetooth settings on the keyboard.
 - Check the battery level of the keyboard.
- The keyboard is not connected to the Android phone.
 - Check the Bluetooth settings on the phone.
 - Check the Bluetooth settings on the keyboard.
 - Check the battery level of the keyboard.
- The keyboard is not connected to the Windows 10 PC.
 - Check the Bluetooth settings on the PC.
 - Check the Bluetooth settings on the keyboard.
 - Check the battery level of the keyboard.

Warranty Card

User information

Company or personage full name

Contact address

TEL: _____ Zip

The purchased product name and model NO.

Purchased date

Signature