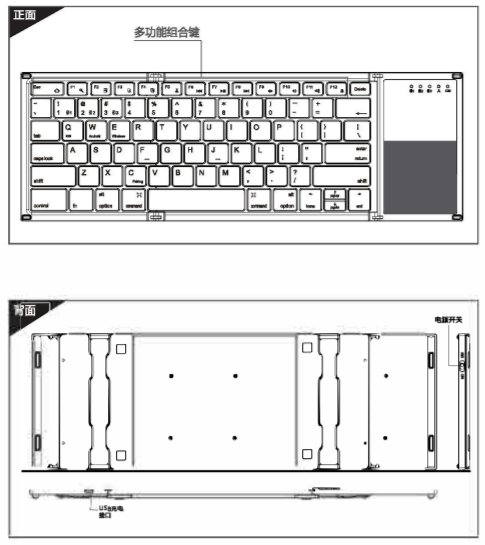


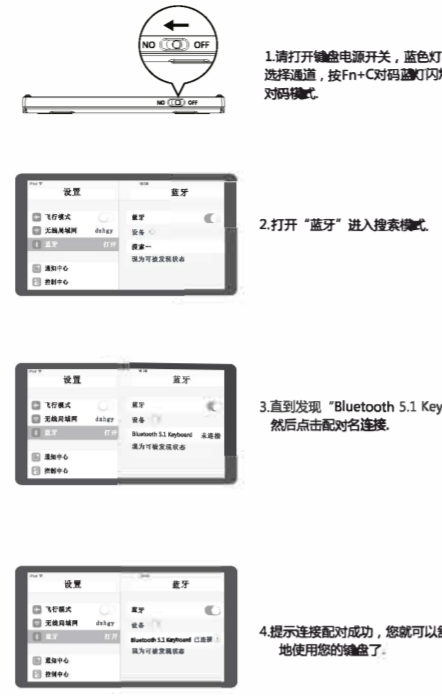
B066 全尺寸折叠蓝牙键盘 说明书



支持系统 Win/iOS/Android 系统切换 Fn+Q 切换iOS系统 Fn+W 切换Android系统 Fn+E 切换Win系统

注意：正确操作本产品，请仔细阅读用户手册。

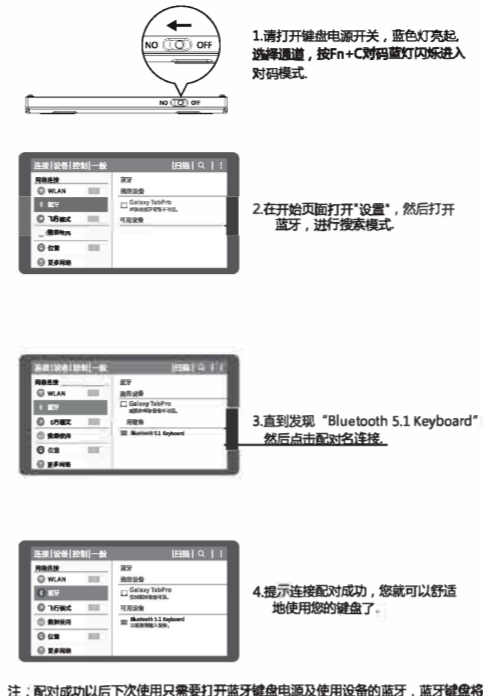
iOS系统连接使用说明：



Win 10 系统连接使用说明：



Android系统连接使用说明：



产品功能

Table mapping function keys (Esc, F1-F12) to their corresponding functions on iOS/Android and Windows.

三系统切换语言：Windows: Alt+Shift 切换语言 iOS: Ctrl+空格键 切换语言 Android: Shift+空格键 切换语言

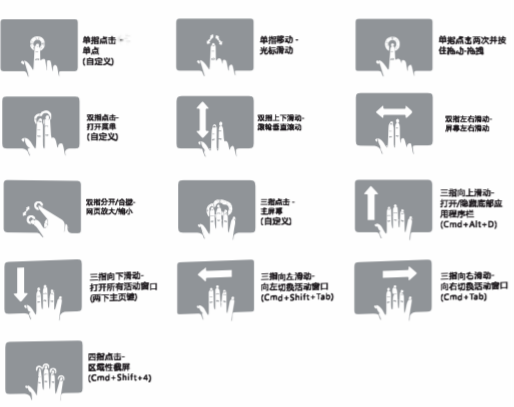
技术规格

键盘尺寸: 342.35x114.7x10.9 mm... 触控板尺寸: 56.1 x 45.1 mm... 触控板重量: 222 g... 使用触控板工作电流: <11 mA... 待机电流: <1 mA... 使用按键工作电流: <4 mA... 休眠电流: 17μA... 工作距离: 10 m... 休眠时间: 10 分钟... 锂电池容量: 140 mAh... 唤醒方式: 按键唤醒... 工作电压: 3.7 V

触控板功能说明(Windows10), 须切换到Windows系统



触控板功能说明(iOS 13.4.1以上), 须切换到iOS系统



自定义的方法：设置-辅助功能-触控-辅助触控-设备-点击键鼠配对名，然后对单指点/双指点/三指点点击进行功能自定义。

触控板功能说明(Android), 须切换到Android系统



状态显示LED

- 对码：打开电源开关，蓝牙指示灯亮起，按下对码键，蓝灯闪烁。
• 充电：指示灯红色，充满灯灭。
• 低电压指示：当电压低于3.3V，红色指示灯闪烁。

多通道连接

- 连接第一个设备时，先按Fn+ # 1，再按Fn+C对码，开始连接。
• 连接第2个设备前，先按一次Fn+ # 2，再按Fn+C对码，开始连接。
• 连接第3个设备前，先按一次Fn+ # 3，再按Fn+C对码，开始连接。
• 在多个设备同时使用，按Fn+ # 1 / # 2 / # 3 切换，即可自由切换到已连接的设备。

故障分析

请与售后服务人员联系

知识产权信息

未经许可的许可，禁止复制本用户手册的内容。

安全提醒

请不要打开或修理该设备，不要在潮湿环境下使用设备，请用干布擦拭该设备。

质保条款

本设备自购买之日起，提供1年保修服务。

键盘保养

- 1. 请勿将设备暴露在液体和潮湿的环境中或使其淋雨，请勿在浴缸、水槽、桑拿房、游泳池或蒸汽浴附近使用。
2. 请勿将设备暴露于过高或过低的温度下。
3. 请勿长时间放置在阳光直射的地方。
4. 请勿靠近明火，如果烫伤、烧地或者烫伤。
5. 避免使用锋利的物品刮擦产品，及时给产品进行充电以保证正常使用。

常见问题解答

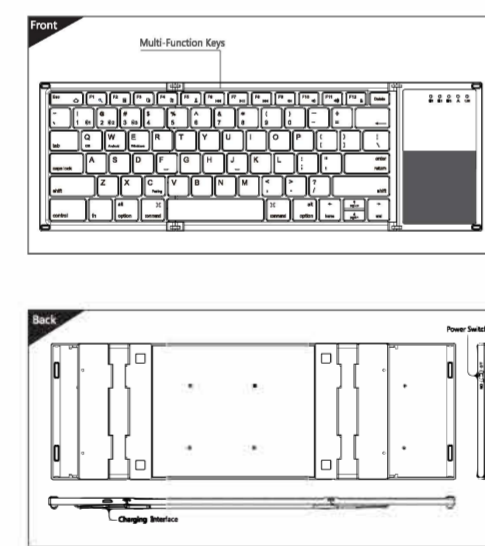
- 1. 平板无法连接蓝牙键盘？
1) 请先检查蓝牙键盘是否有进入配对状态，然后再打开平板电脑蓝牙搜索设备进行连接。
2) 检查蓝牙键盘电量是否充足，电量不足也会导致无法连接，请将蓝牙键盘充电后再使用。
2. 键盘指示灯在使用过程中一直闪烁？
键盘指示灯在使用中一直闪烁，表示电池即将没电，请尽快将键盘充电。
3. 设备显示蓝牙键盘断开连接？
蓝牙键盘在一段时间内不使用，设备为了省电将自动关闭蓝牙功能，按键盘任意键唤醒蓝牙连接自动恢复。

保修卡

Warranty card form with fields for user information, company name, address, telephone, and purchase date.

本设备由生产厂家自行设计并由生产厂家生产，此设备遵循：(1) 遵守国家法律法规，不得进行非法活动，不得损害他人利益；(2) 遵守国家法律法规，不得进行非法活动，不得损害他人利益；(3) 遵守国家法律法规，不得进行非法活动，不得损害他人利益。

B066 Bluetooth keyboard User's Manual

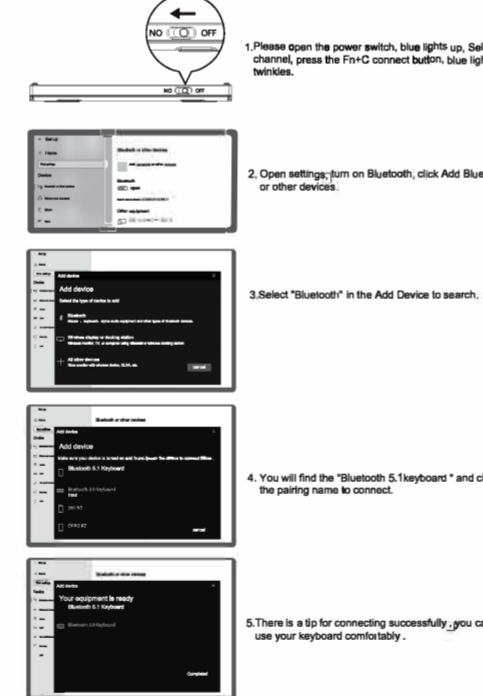


Compatible System Win/iOS/Android System switching Fn+Q iOS Fn+W Android Fn+E Win

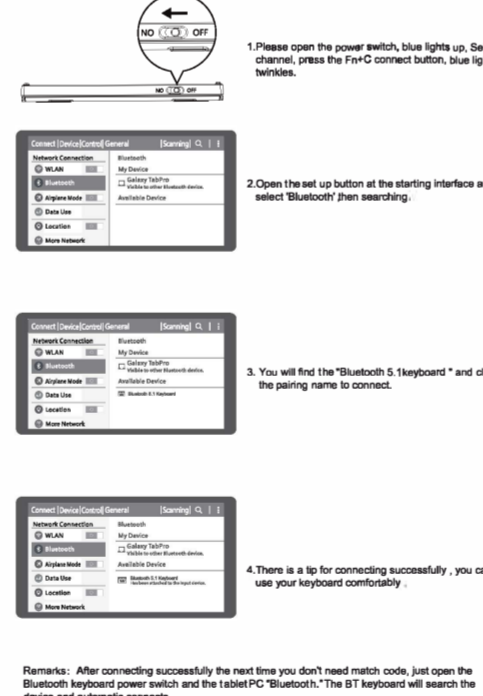
iOS Connection Instructions:



Win10 Connection Instructions:



Android Connection Instructions:



Product features

Table mapping function keys (Esc, F1-F12) to their corresponding functions on iOS/Android and Windows.

Three system switching languages Windows: Alt+Shift switch language iOS: Ctrl+Space key switch language Android: Shift+Space key switch language

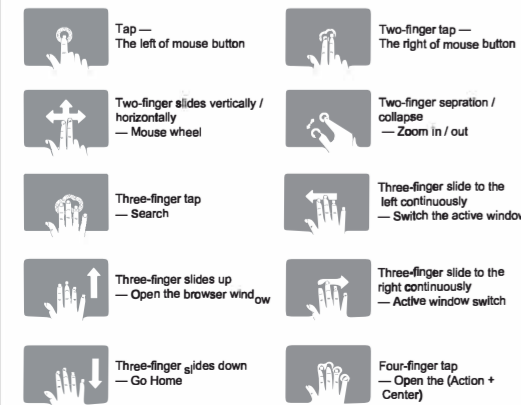
DECLARATION OF CONFORMITY

I hereby declare that the product Product: Bluetooth Keyboard Model No. B066 Trade Mark: N/A... Shenzhen DZH Industrial Co., Ltd. 575 Boulder Court, Pleasanton, California 94566

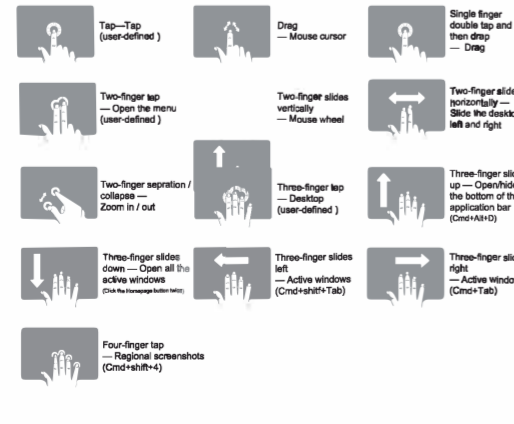
Technical Specifications

Keyboard size: 342.35 x 114.7 x 10.9mm... Touchpad size: 56.1x45.1mm... Working distance: 10 m... Weight: 222 g... Working voltage: 3.7V... Key working current: <4mA... Use touchpad the working current: <11mA... Standby current: <1mA... Sleep time: Ten minutes... Sleep current: 17μA... Awaken way: Press key

Touchpad function description (Windows10), must be switched to Windows system

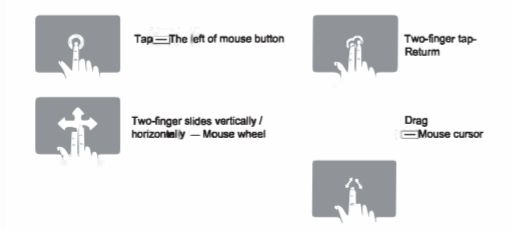


Touch pad function description (iOS 13.4.1 and above), must be switched to iOS system



User-defined: Settings-Auxiliary Functions-Touch - Auxiliary Touches-Device Click the keyboard's pairing name, and then customize the function of 'single finger, Two-finger, Three-finger'.

Touch pad function description (Android), must be switched to Android system



Status Display LED

- Connect: Open the power switch, blue lights up, press the connect button, blue light twinkles.
• Charging: Indicator light will be on red, after fully charging, the light crush out.
• Low Voltage Indication: When the voltage is below 3.3 V, red light twinkles.

Multi-channel connection

- When connecting the first device, first press Fn+ # 1 and then press Fn+C to start the connection.
• Before connecting the second device, press Fn+ # 2 once, then press Fn+C to start the connection.
• Before connecting the third device, press Fn+ # 3 once, then press Fn+C to start the connection.

Troubleshooting

Please contact the after-sales service.

Copyright

It is forbidden to reproduce any part of this manual without the permission of seller.

Safety instructions

Do not open or repair this device, Do not use the device in a damp environment. Clean the device with a dry cloth.

Warranty

The device is provided with one-year limited hardware warranty from the purchase day.

Keyboard Maintenance

- 1. Please keep the keyboard away from liquid or humid environment, saunas, swimming pool, steam room and don't let the keyboard get wet in the rain.
2. Please don't expose the keyboard at too high or too low temperature condition.
3. Please don't put keyboard under sun for a long time.
4. Please don't put keyboard close to the flame, such as cooking stoves, candles or fireplace.
5. Avoid sharp objects scratching products, timely to recharge products to ensure the normal use.

FAQ

- 1. The tablet PC can't connect the BT keyboard?
1) At first check the BT keyboard is into match code state, then open the tablet PC Bluetooth searching.
2) Checking the BT keyboard Battery is enough, the battery low is allowed to can't connect, you need charge.
2. The keyboard indication light always flashing when use?
Keyboard indication always flashing when use, is means the keyboard will be no power, please charge the power as soon as possible.
3. The table PC display BT keyboard is disconnect?
The Bluetooth keyboard is not used for a period of time, the device will automatically enter the sleep state in order to save power. Press any key on the keyboard to wake up, and the Bluetooth connection will be automatically restored.

Warranty Card

Warranty card form with fields for user information, company name, address, telephone, and purchase date.

CE Statement

Herby, Shenzhen DZH Industrial Co., Ltd that this Bluetooth Keyboard, B066 is in compliance with the essential requirements and other relevant provisions of Directive 2014/53/EU... Operation Frequency:2402MHz-2480MHz Max output Power: 0.0005W