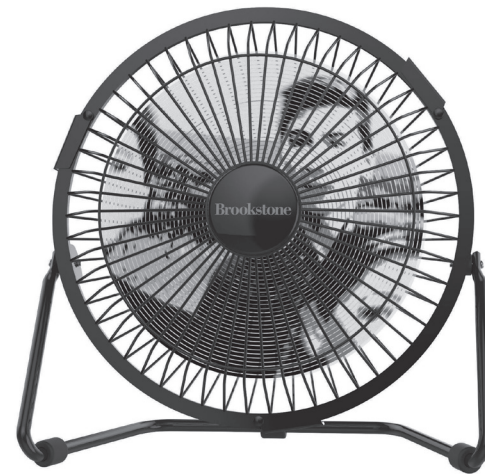


Find thousands more  
great ideas online

**Brookstone®**

322178

Merrimack, New Hampshire, USA 03054 • 800-846-3000 • Brookstone.com



**Brookstone®**

## Picture Fan

DISPLAY YOUR PHOTOS, GRAPHICS & MESSAGES

TABLE OF CONTENTS

Warnings and Cautions..... 1

FCC Information.....5

Location of Parts and Controls.....6

Home Screen App Control .....7

Picture Fan Operation.....8

Downloading Free App.....8

Pairing Device and Picture Fan .....9

Adding a Message ..... 10

Adding a Picture .....12

Adding a Photo from Camera.....13

Adding a Photo from Photo Album.....14

Sending Messages/Images to the Picture Fan .....14

Delete Messages/Images.....15

Selecting Display Time .....15

Care and Maintenance ..... 16

Troubleshooting.....17

Specifications.....19

Warranty ..... 20

suppliers other than Brookstone may provide their own warranties to the purchaser, but Brookstone, in so far as permitted by law, provides these products “as is.” This warranty does not apply to: a) damage caused by failure to follow instructions relating to product’s use or the installation of components; b) damage caused by accident, abuse, misuse, fire, floods, earthquake or other external causes; c) damage caused by service performed by anyone who is not a representative of Brookstone; d) accessories used in conjunction with a covered product; e) a product or part that has been modified to alter functionality or capability; f) items intended to be periodically replaced by the purchaser during the normal life of the product including, without limitation, batteries or light bulbs; g) any product sold “as is” including, without limitation, floor demonstration models and refurbished items; or h) a product that is used commercially or for a commercial purpose.

**BROOKSTONE SHALL NOT BE LIABLE FOR INCIDENTAL OR CONSEQUENTIAL DAMAGES RESULTING FROM THE USE OF THIS PRODUCT, OR ARISING OUT OF ANY BREACH OF THIS WARRANTY. TO THE EXTENT PERMITTED BY APPLICABLE LAW, BROOKSTONE DISCLAIMS ANY AND ALL STATUTORY OR IMPLIED WARRANTIES, INCLUDING, WITHOUT LIMITATION, WARRANTIES OF MERCHANTABILITY, FITNESS FOR A PARTICULAR PURPOSE AND WARRANTIES AGAINST HIDDEN OR LATENT DEFECTS. IF BROOKSTONE CANNOT LAWFULLY DISCLAIM STATUTORY OR IMPLIED WARRANTIES, THEN TO THE EXTENT PERMITTED BY LAW, ALL SUCH WARRANTIES SHALL BE LIMITED IN DURATION TO THE DURATION OF THIS EXPRESS WARRANTY.**

Some states disallow the exclusion or limitation of incidental or consequential damages or how long an implied warranty lasts, so the above exclusions or limitations may not apply to you. This warranty gives you specific legal rights and you may also have other rights, which vary from state to state.

## ONE (1) YEAR LIMITED WARRANTY

Brookstone® warrants this product against defects in materials and/or workmanship under normal use for a period of ONE (1) YEAR from the date of purchase by the original purchaser ("Warranty Period"). If a defect arises and a valid claim is received within the Warranty Period, at its option, Brookstone will either 1) repair the defect at no charge, using new or refurbished replacement parts, or 2) replace the product with a new product that is at least functionally equivalent to the original product, or 3) provide a store credit in the amount of the purchase price of the original product. A replacement product or part, including a user-installable part installed in accordance with instructions provided by Brookstone, assumes the remaining warranty of the original product. When a product or part is exchanged, any replacement item becomes your property and the replaced item becomes Brookstone's property. When a store credit is given, the original product must be returned to Brookstone and becomes Brookstone's property.

**Obtaining Service:** To obtain warranty service, call Brookstone Limited Warranty Service at 1-800-292-9819. Please be prepared to describe the product that needs service and the nature of the problem. A purchase receipt is required. All repairs and replacements must be authorized in advance. Service options, parts availability and response times will vary. You are responsible for delivery and the cost of delivery of the product or any parts to the authorized service center for replacement, per our instructions.

**Limits and Exclusions:** Coverage under this Limited Warranty is limited to the United States of America, including the District of Columbia and the U.S. Territories of Guam, Puerto Rico, and the U.S. Virgin Islands. This Limited Warranty applies only to products manufactured for Brookstone that can be identified by the "Brookstone" trademark, trade name, or logo affixed to them or their packaging. The Limited Warranty does not apply to any non-Brookstone products. Manufacturers or

## CAUTION

- TO REDUCE THE RISK OF ELECTRIC SHOCK, DO NOT REMOVE COVER. THERE ARE NO SERVICEABLE PARTS INSIDE.
- TO REDUCE THE RISK OF FIRE OR ELECTRIC SHOCK, DO NOT EXPOSE THIS UNIT TO RAIN OR MOISTURE.



The lightning flash with arrow-head symbol within an equilateral triangle is intended to alert the user to the presence of uninsulated "dangerous voltage" within the unit's enclosure that may be of sufficient magnitude to constitute a risk of electric shock.



The exclamation point within an equilateral triangle is intended to alert the user to the presence of important operating and maintenance (servicing) instructions in the literature accompanying the unit.

## IMPORTANT SAFETY INSTRUCTIONS

All of the safety and operating instructions should be read, adhered to and followed before the unit is operated.

**This Fan is intended for household use only.**

## **SAVE THESE INSTRUCTIONS**

### **IMPORTANT SAFETY INSTRUCTIONS**

When using an electrical appliance, basic precautions should always be followed.

Read all instructions before using this Fan.

### **SPECIFICATIONS**

Power Supply.....DC 5V/1000mA

App Compatibility ..... Bluetooth® 4.0, Apple® iOS 8.0 and later,  
Android® 4.3 and later

Range..... 33 feet

Weight ..... 14.6 oz (414g)

Dimensions ..... 7.6" (193mm) w x 3.5" (90mm) d x 8" (204mm) h

App Store is a service mark of Apple Inc.


Android is a registered trademark of Google, Inc.

Google Play is a trademark of Google, Inc.

The Bluetooth® word mark and logos are registered trademarks owned by Bluetooth SIG, Inc. and any use of such marks by Brookstone is under license.

© Brookstone 2017

## NOTES

 **WARNING** – To reduce the risk of burns, fire, electric shock or injury to persons:

1. Check the household voltage to ensure it matches the unit's rated specification before operating.
2. To reduce the risk of fire or electric shock, do not use this fan with any solid-state speed-control device.
3. Close supervision is necessary when the unit is used by or near children or pets, or left unattended.
4. Do not allow children to play with any product packaging, such as plastic bags.
5. Do not operate the unit with a damaged cord or plug, after the product malfunctions, or has been dropped or damaged in any way.
6. This product is intended for domestic use only and not for commercial, industrial or outdoor use.
7. Always turn the unit off and unplug before moving.
8. To disconnect from the power supply, grip the power adaptor and pull from the power socket. Never pull by the cord.
9. Do not operate the unit in areas where gasoline, paint, or other flammable liquids are used or stored.
10. Do not use the unit in artificially hot or humid conditions or allow it to be used in any hazardous environment.
11. Do not place the unit near an open flame, cooking or heating appliance, or hot surface.
12. This unit is not intended for use in wet or damp locations. Never locate the unit in an area where it may fall into a sink or other water container.

13. Always use on a dry level surface.
14. Do not let the power cord hang over the edge of a table or counter. Arrange the power cord away from an area where it may be tripped over.
15. Never place the power cord under a carpet or rug.
16. Do not place objects on the product or allow objects to obstruct the inlet or outlet openings.
17. Do not operate in close proximity to walls or curtains, etc.
18. Do not attempt to repair the unit. To repair the unit take it to a qualified service engineer.
19. Do not operate any fan with a damaged cord or plug. Discard fan or return to an authorized service facility for examination and/or repair.
20. Unplug unit when not in use.
21. Switch the product off and remove the plug from the power socket before servicing.
22. This equipment complies with part 15 of the FCC Rules. Operation is subject to the following two conditions:
  1. This equipment may not cause harmful interference.
  2. This equipment must accept any interference received, including interference that may cause undesired operation.

## TROUBLESHOOTING

ISSUE	SOLUTION
Cannot make Bluetooth® connection through app.	App is only compatible with Bluetooth® 4.0 devices.
Bluetooth® disconnection.	Ensure your device is within 33 feet of the unit and reconnect your device to the Picture Fan. Refer to page 9 for pairing instructions.
Cannot send Messages/Images to Picture Fan.	<p>Ensure your device is within 33 feet of the unit and reconnect your device to the Picture Fan. Refer to page 9 for pairing instructions.</p> <p>Tap the Bluetooth® Connection icon anytime to scan for the Picture Fan. When your device and the Picture Fan are paired, the Bluetooth® Connection icon on the Home screen is blue. When your device and the Picture Fan are not paired, the Bluetooth® Connection icon on the Home screen is gray.</p>

## CARE AND MAINTENANCE

- Before cleaning, switch the Picture Fan off and remove the plug from the USB port.
- Use a slightly damp cloth to clean the Picture Fan housing.
- Do not use detergents, abrasive cleaning liquids, or chemical agents (alcohol, gasoline, etc.) to clean the Picture Fan.
- Store in a dry, dust free area.

## FCC INFORMATION

**Caution:** Changes or modifications not expressly approved by the party responsible for compliance could void the user's authority to operate the equipment.

This equipment has been tested and found to comply with the limits for a Class B Digital Device, pursuant to Part 15 of the FCC Rules. These limits are designed to provide reasonable protection against harmful interference in a residential installation. This equipment generates, uses, and can radiate radio frequency energy and, if not installed and used in accordance with the instructions, may cause harmful interference to radio communications. However, there is no guarantee that interference will not occur in a particular installation.

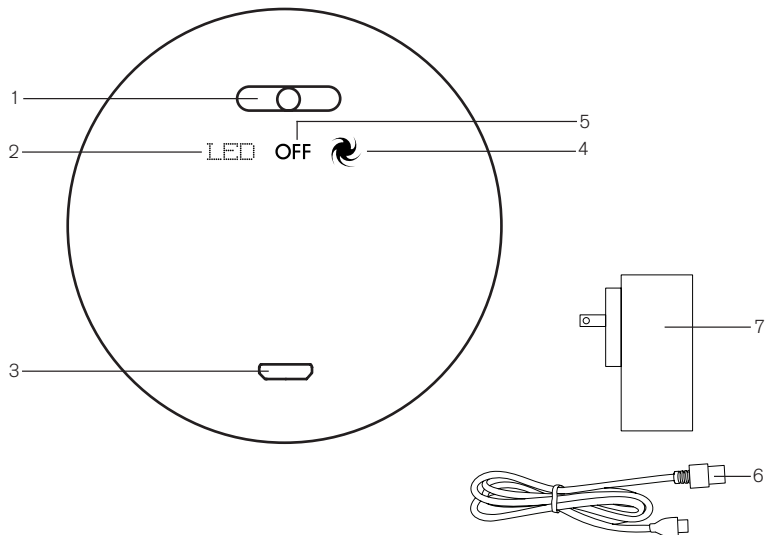
If this equipment does cause harmful interference to radio or television reception, which can be determined by turning the equipment off and on, the user is encouraged to try to correct the interference by one or more of the following measures:

- Reorient or relocate the receiving antenna.
- Increase the distance between the equipment and receiver.
- Connect the equipment to an outlet on a circuit different from that to which the receiver is connected.
- Consult the dealer or an experienced radio/TV technician for help.

**WARNING:** To comply with FCC's RF radiation exposure limits for general population/uncontrolled exposure, the antenna(s) used for this transmitter must be installed to provide a separation distance of at least 20 cm from all persons and must not be collocated or operating in conjunction with any other antenna or transmitter.

## LOCATION OF PARTS AND CONTROLS (PICTURE FAN)

- |                    |                    |
|--------------------|--------------------|
| 1. Slide Switch    | 5. Off             |
| 2. Fan with LED    | 6. Micro USB Cable |
| 3. Micro USB Port  | 7. Adapter         |
| 4. Fan without LED |                    |



## DELETE MESSAGES/IMAGES

1. Tap the Delete icon on the Home Screen.
2. Select messages and/or images to delete.
3. Tap the Delete icon again to delete selected messages and/or images.
4. Tap "Cancel" or unselect Messages and/or Images to cancel deletion.

## SELECTING DISPLAY TIME

1. Tap the Menu icon on the Home Screen and select "Display Time."
2. Select "3 seconds" for the Messages/Images to change every 3 seconds on the Picture Fan.
3. Select "5 seconds" for the Messages/Images to change every 5 seconds on the Picture Fan.
4. Select "7 seconds" for the Messages/Images to change every 7 seconds on the Picture Fan.
5. Tap the back arrow to save the Display Time selection and exit the menu.



## ADDING A PHOTO FROM PHOTO ALBUM

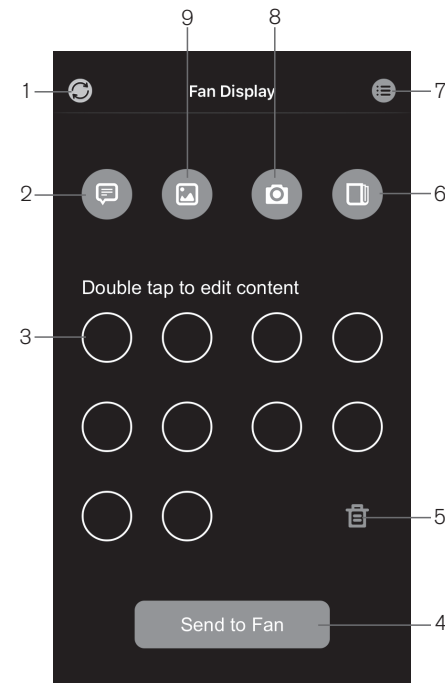
1. Open the Picture Fan app on your device and tap the Add Photo from Photo Album icon on the Home Screen. Your device's photo album will open.
2. Select a photo from your device's photo album. The photo will show in the fan display.
3. Pinch in, pinch out and rotate the photo to the desired position on the fan display.
4. Tap "Save" to save the photo. The photo is shown on the Home screen.
5. Double tap the photo on the Home screen to edit.
6. Repeat steps 1-4 to add additional messages. The Picture Fan displays up to 10 messages and/or images.

## SENDING MESSAGES/IMAGES TO THE PICTURE FAN

Tap "Send to Fan" on the Home Screen to send all messages and images to the Picture Fan. While the messages and images are loading, the Picture Fan does not show messages or images.

## HOME SCREEN APP CONTROL

1. Bluetooth® Connection
2. Add Message
3. Fan Display (10)
4. Send Messages/Images to Fan
5. Delete Messages/Images
6. Add Photo from Photo Album
7. Menu
8. Add Photo from Camera
9. Add Picture



Note: The app screen may not appear exactly as shown, depending upon your device.

## PICTURE FAN OPERATION

1. Insert one end of the included Micro USB cable into the included adapter and plug the adapter into an electrical socket. Insert the other end of the Micro USB cable into the Micro USB port on the Picture Fan.
2. Switch the Picture Fan to Fan with LED to turn on with Messages/Images displayed.
3. Switch the Picture Fan to Fan without LED to turn on without Messages/Images displayed.
4. Switch the Picture Fan to Off to turn off.

## DOWNLOADING FREE APP

Go to the App Store<sup>SM</sup> (for Apple devices) or Google Play<sup>TM</sup> (for Android devices) to download the Picture Fan App, "Picture Fan".

The Picture Fan App is compatible with:  
Apple® iOS 8.0 and later  
Android® 4.3 and later



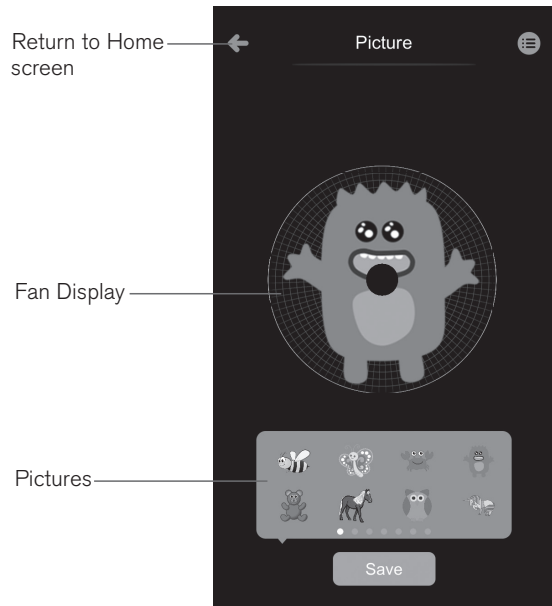
2. Tap a Picture to select. The picture will show in the fan display.
3. Pinch in, pinch out and rotate the picture to the desired position on the fan display.
4. Tap "Save" to save the picture. The picture is shown on the Home screen.
5. Double tap the picture on the Home screen to edit.
6. Repeat steps 1-4 to add additional messages. The Picture Fan displays up to 10 messages and/or images.

## ADDING A PHOTO FROM CAMERA

1. Open the Picture Fan app on your device and tap the Add Photo from Camera icon on the Home Screen. Your device's camera will open.
2. Take a photo with your device's camera. The photo will show in the fan display.
3. Pinch in, pinch out and rotate the photo to the desired position on the fan display.
4. Tap "Save" to save the photo. The photo is shown on the Home screen.
5. Double tap the photo on the Home screen to edit.
6. Repeat steps 1-4 to add additional messages. The Picture Fan displays up to 10 messages and/or images.

## ADDING A PICTURE

1. Open the Picture Fan app on your device and tap the Add Picture icon on the Home Screen. The Add Picture screen displays.



Note: The app screen may not appear exactly as shown, depending upon your device.

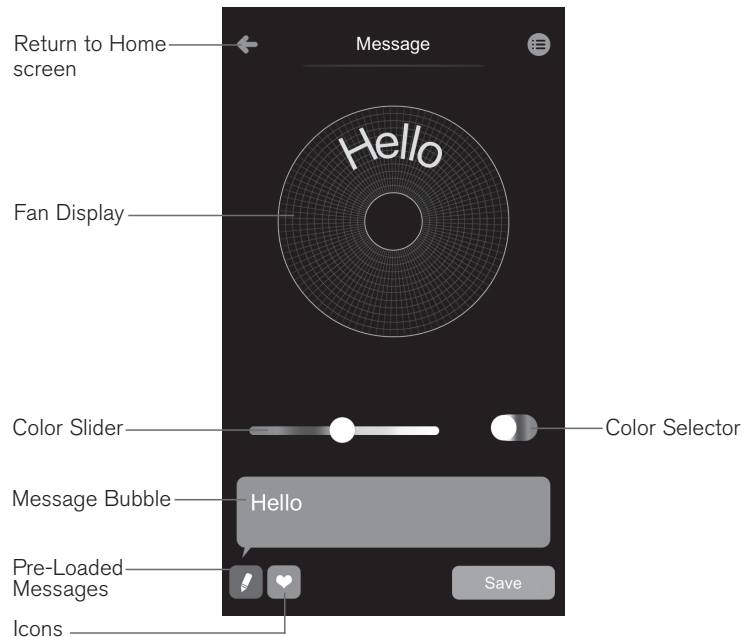
## PAIRING DEVICE AND PICTURE FAN

1. Prepare your device to pair using Bluetooth® technology, making sure the device is within 33 feet of the Picture Fan. Refer to your device's owners manual for details if necessary.
2. Download the free "Picture Fan" app from the App Store<sup>SM</sup> (for Apple devices) or Google Play<sup>TM</sup> (for Android devices).
3. Switch the Picture Fan to Fan with LED.
4. Open the Picture Fan app on your device. The app will scan for the Picture Fan.
5. Select "Picture Fan" from the list of available devices. When your device is connected, the app's Home screen will display and the Bluetooth® Connection icon on the Home screen will be blue.
6. Tap the Bluetooth® Connection icon anytime to scan for the Picture Fan. When your device and the Picture Fan are paired, the Bluetooth® Connection icon on the Home screen is blue. When your device and the Picture Fan are not paired, the Bluetooth® Connection icon on the Home screen is gray.

Note: The Picture Fan and your device need to be re-paired through the app when the Picture Fan is turned on.

## ADDING A MESSAGE

1. Open the Picture Fan app on your device and tap the Add Message icon on the Home Screen. The Add Message screen displays.



Note: The app screen may not appear exactly as shown, depending upon your device.

2. Tap the Message Bubble to type your own message. The message will show in the fan display.
3. Tap the Pencil icon to bring up a list of pre-loaded messages to select.
4. Tap the Heart icon to bring up a list of icons to add to your message.
5. Tap the Color Selector to choose between solid colors and random colors. Use the Color Slider to make a color selection for your message.
6. Tap "Save" to save the message. The message is shown on the Home screen.
7. Double tap the message on the Home screen to edit.
8. Repeat steps 1-6 to add additional messages. The Picture Fan displays up to 10 messages and/or images.