



# TEST REPORT

For

**Applicant :** XIAMEN LEELEN TECHNOLOGY CO.,LTD

**Address :** 65 Sunban South Road, Jimei Industrial Zone,  
Xiamen, China

**Product  
Name :** Door Station

**Model Name :** JB-5000 L8-5002MGLC-IP(8)-8

**Series Model  
Name :** JB-5000 L8-5002MLC-IP(8)-8, JB-5000 L8-5002MGC(8)-8

**Remark :** Only difference in the model name.

**Brand Name :** **LEELEN**

**FCC ID :** 2AFVB-L8500208

**Report No. :** MTE/DYY/A15091145

**Date of  
Issue :** Sept. 10, 2015

**Issued by :** Most Technology Service Co., Ltd.

**Address :** No.5, 2nd Langshan Road, North District, Hi-tech Industrial  
Park, Nanshan, Shenzhen, Guangdong, China

**Tel :** 86-755-8602 6850

**Fax :** 86-755-26013350

*The report consists 16 pages in total. It may be duplicated completely for legal use with the approval of the applicant. It should not be reproduced except in full, without the written approval of our laboratory. The client should not use it to claim product endorsement by MOST. The test results in the report only apply to the tested sample. The test report shall be invalid without all the signatures of testing engineers, reviewer and approver.*

**TABLE OF CONTENTS**

- 1. VERIFICATION OF CONFORMITY..... 3**
- 2. GENERAL INFORMATION..... 4**
  - 2.1 Product Information ..... 4
  - 2.2 Objective ..... 4
  - 2.3 Test Standards and Results ..... 5
  - 2.4 Environmental Conditions..... 5
- 3. TEST METHODOLOGY ..... 6**
  - 3.1 TEST FACILITY ..... 6
- 4. SETUP OF EQUIPMENT UNDER TEST ..... 7**
  - 4.1 SETUP CONFIGURATION OF EUT ..... 7
  - 4.2 TEST EQUIPMENT LIST..... 7
- 5. 47 CFR Part 15 C Requirements ..... 8**
  - 5.1.1 Applicable Standard ..... 8
  - 5.1.2 Evaluation Criteria ..... 8
  - 5.1.3 Result: Compliance ..... 8
  - 5.2 CONDUCTED EMISSION TEST ..... 9
    - 5.2.1 Requirement..... 9
    - 5.2.2 Block Diagram of Test Setup ..... 9
    - 5.2.3 Test procedure..... 9
    - 5.2.4 Test Result..... 9
  - 5.3 Radiated Emission ..... 10
    - 5.3.1 Requirement..... 10
  - 5.4.2 Test Configuration..... 10
  - 5.4.3 Test Procedure: ..... 11
  - 5.4.4 Test Result..... 12
- APPENDIX 1..... 15
  - PHOTOGRPHS OF TEST SET ..... 15

# 1. VERIFICATION OF CONFORMITY

**Equipment Under Test:** Door Station  
**Brand Name:** **LEELEN**  
**Model Number:** JB-5000 L8-5002MGLC-IP(8)-8  
**FCC ID:** 2AFVB-L8500208  
**Applicant:** XIAMEN LEELEN TECHNOLOGY CO.,LTD  
 65 Sunban South Road,Jimei Industrial Zone,Xiamen,China  
**Manufacturer:** XIAMEN LEELEN TECHNOLOGY CO.,LTD  
 65 Sunban South Road,Jimei Industrial Zone,Xiamen,China  
**Technical Standards:** 47 CFR Part 15 Subpart C section 15.225  
**File Number:** MTE/DYY/A15091145  
**Date of test:** Aug. 12-Sept. 07, 2015  
**Deviation:** None  
**Condition of Test Sample:** Normal  
**Test Result:** PASS

The above equipment was tested by Most Technology Service Co., Ltd. for compliance with the requirements set forth in FCC rules and the Technical Standards mentioned above. This said equipment in the configuration described in this report shows the maximum emission levels emanating from equipment and the level of the immunity endurance of the equipment are within the compliance requirements.

The test results of this report relate only to the tested sample identified in this report.

Tested by (+ signature):

*Daisy*

\_\_\_\_\_  
Daisy Yu

Aug. 12-Sept. 07, 2015

Review by (+ signature):

*Henry*

\_\_\_\_\_  
Henry Chen



Approved by (+ signature):

*Yvette Zhou*

\_\_\_\_\_  
Yvette Zhou(Manager)

Sept. 10, 2015

## 2. GENERAL INFORMATION

### 2.1 Product Information

<b>Product</b>	Door Station
<b>Brand Name</b>	<b>LEELLEN</b>
<b>Model Number</b>	JB-5000 L8-5002MGLC-IP(8)-8
<b>Series Model Name:</b>	JB-5000 L8-5002MLC-IP(8)-8, JB-5000 L8-5002MGC(8)-8
<b>Series Model Difference description:</b>	Only difference in the model name.
<b>Power Supply</b>	Input: DC 12V $\overline{\text{---}}$ , $\leq 0.6\text{A}$ (for audio) DC 32V $\overline{\text{---}}$ , $\leq 0.1\text{A}$ (for video)
<b>Frequency Range</b>	125KHz
<b>Modulation Type:</b>	ASK
<b>Channel Number</b>	1
<b>Antenna Type</b>	Loop antenna
<b>Temperature Range</b>	-20°C ~ +45°C

**NOTE:**

1. For a more detailed features description about the EUT, please refer to User's Manual.

### 2.2 Objective

The objective of the report is to perform tests according to FCC Part 15 Subpart C for the EUT FCC ID Certification:

No.	Identity	Document Title
1	47 CFR Part 15	Radio Frequency Devices
2	ANSI C63.10	American National Standard for Testing Unlicensed Wireless Devices

## 2.3 Test Standards and Results

No.	Section	Test Items	Result	Date of Test
1	FCC 15.203	Antenna Requirement	PASS	2015.09.01
2	FCC 15.207 (a)	AC Power Line Conducted Emission	N/A	---
3	FCC 15.209,	Radiated Emission	PASS	2015.09.07
Remark: N/A means not applicable				

*Note:* 1. The test result judgment is decided by the limit of measurement standard  
 2. The information of measurement uncertainty is available upon the customer's request.

## 2.4 Environmental Conditions

During the measurement the environmental conditions were within the listed ranges:

- Temperature: 15-35°C
- Humidity: 30-60 %
- Atmospheric pressure: 86-106 kPa

### 3. TEST METHODOLOGY

#### 3.1 TEST FACILITY

<b>Test Site:</b>	Most Technology Service Co., Ltd
<b>Location:</b>	No.5, Langshan 2nd Rd., North Hi-Tech Industrial park, Nanshan, Shenzhen, Guangdong, China
<b>Description:</b>	<p>There is one 3m semi-anechoic an area test sites and two line conducted labs for final test. The Open Area Test Sites and the Line Conducted labs are constructed and calibrated to meet the FCC requirements in documents ANSI C63.4:2009 and CISPR 16 requirements.</p> <p>The FCC Registration Number is <b>490827</b>. The IC Registration Number is <b>7103A-1</b>.</p>
<b>Site Filing:</b>	The site description is on file with the Federal Communications Commission, 7435 Oakland Mills Road, Columbia, MD 21046.
<b>Instrument</b>	All measuring equipment is in accord with ANSI C63.4:2009 and CISPR 16
<b>Tolerance:</b>	requirements that meet industry regulatory agency and accreditation agency requirement.
<b>Ground Plane:</b>	Two conductive reference ground planes were used during the Line Conducted Emission, one in vertical and the other in horizontal. The dimensions of these ground planes are as below. The vertical ground plane was placed distancing 40 cm to the rear of the wooden test table on where the EUT and the support equipment were placed during test. The horizontal ground plane projected 50 cm beyond the footprint of the EUT system and distanced 80 cm to the wooden test table. For Radiated Emission Test, one horizontal conductive ground plane extended at least 1m beyond the periphery of the EUT and the largest measuring antenna, and covered the entire area between the EUT and the antenna.

## 4. SETUP OF EQUIPMENT UNDER TEST

### 4.1 SETUP CONFIGURATION OF EUT

See test photographs attached in Appendix 1 for the actual connections between EUT and support equipment.

### 4.2 TEST EQUIPMENT LIST

**Instrumentation:** The following list contains equipment used at Most for testing. The equipment conforms to the CISPR 16-1 / ANSI C63.2 Specifications for Electromagnetic Interference and Field Strength Instrumentation from 10 kHz to 1.0 GHz or above.

No.	Equipment	Manufacturer	Model No.	S/N	Calibration date	Calibration Interval
1	Test Receiver	Rohde & Schwarz	ESCI	100492	2015/03/10	1 Year
2	Spectrum Analyzer	Agilent	E7405A	US44210471	2015/03/14	1 Year
3	L.I.S.N.	Rohde & Schwarz	ENV216	100093	2015/03/10	1 Year
4	Coaxial Switch	Anritsu Corp	MP59B	6200283933	2015/03/07	1 Year
5	Terminator	Hubersuhner	50Ω	No.1	2015/03/07	1 Year
6	RF Cable	SchwarzBeck	N/A	No.1	2015/03/07	1 Year
7	Test Receiver	Rohde & Schwarz	ESPI	101202	2015/03/10	1 Year
8	Bilog Antenna	Sunol	JB3	A121206	2015/03/14	1 Year
9	Horn Antenna	SCHWARZBECK	BBHA9120D	756	2015/03/14	1 Year
10	Horn Antenna	Penn Engineering	9034	8376	2015/03/14	1 Year
11	Cable	Resenberger	N/A	NO.1	2015/03/07	1 Year
12	Cable	SchwarzBeck	N/A	NO.2	2015/03/07	1 Year
13	Cable	SchwarzBeck	N/A	NO.3	2015/03/07	1 Year
14	Single Phase Power Line Filter	DuoJi	FNF 202B30	N/A	2015/03/07	1 Year
15	Test Receiver	Rohde & Schwarz	ESCI	100492	2015/03/10	1 Year
16	Loop antenna	ARA	PLA-1030/B	1039	2015/03/14	1 Year
17	Climate Chamber	ESPEC	EL-10KA	A20120523	2015/07/05	1 Year

**NOTE:** Equipments listed above have been calibrated and are in the period of validation.

## 5. 47 CFR Part 15 C Requirements

### 5.1 ANTENNA REQUIREMENT

#### 5.1.1 Applicable Standard

According to FCC § 15.203 , An intentional radiator shall be designed to ensure that no antenna other than that furnished by the responsible party shall be used with the device. The use of a permanently attached antenna or of an antenna that uses a unique coupling to the intentional radiator shall be considered sufficient to comply with the provisions of this section. The manufacturer may design the unit so that a broken antenna can be replaced by the user, but the use of a standard antenna jack or electrical connector is prohibited. This requirement does not apply to carrier current devices or to devices operated under the provisions of §15.211, §15.213, §15.217, §15.219, or §15.221. Further, this requirement does not apply to intentional radiators that must be professionally installed, such as perimeter protection systems and some field disturbance sensors, or to other intentional radiators which, in accordance with §15.31(d), must be measured at the installation site. However, the installer shall be responsible for ensuring that the proper antenna is employed so that the limits in this part are not exceeded.

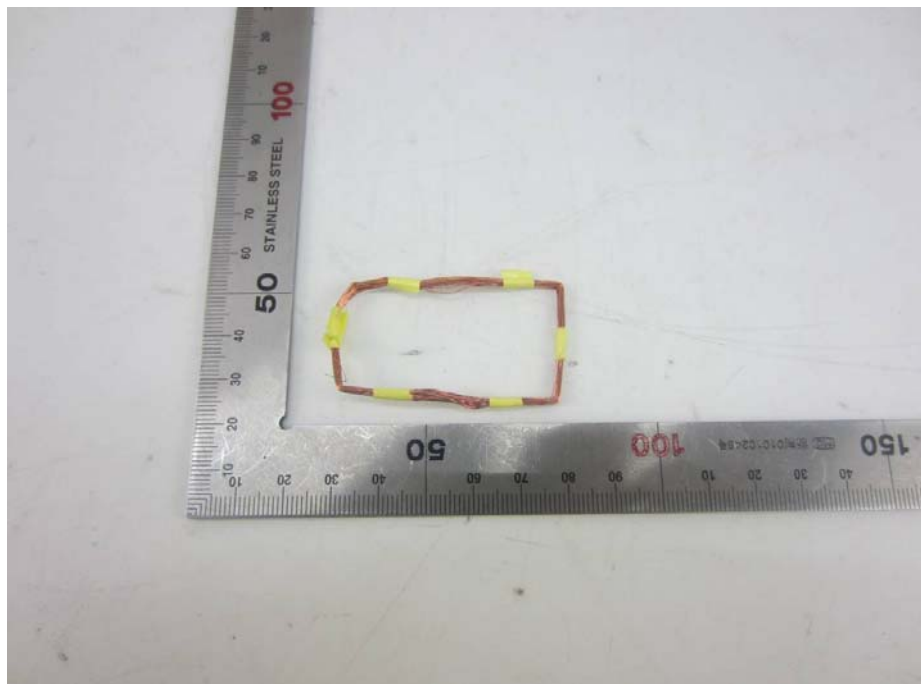
#### 5.1.2 Evaluation Criteria

- (a) Antenna must be permanently attached to the unit.
- (b) Antenna must use a unique type of connector to attach to the EUT.

Unit must be professionally installed, Installer shall be responsible for verifying that the correct antenna is employed with the unit.

#### 5.1.3 Result: Compliance.

The antenna connector is designed with unique type RF connector and no consideration of replacement. Please see the following EUT antenna photo for details:





## 5.2 CONDUCTED EMISSION TEST

### 5.2.1 Requirement

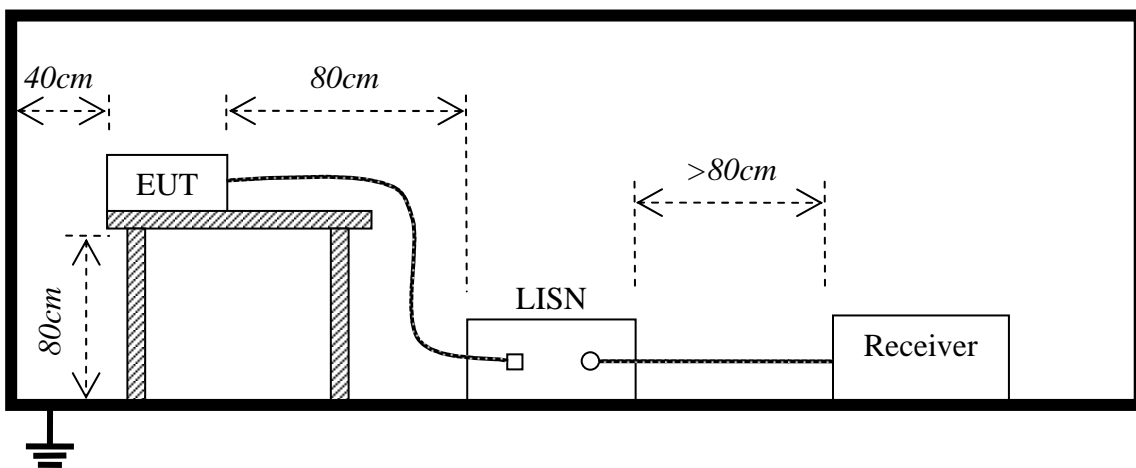
A radio apparatus that is designed to be connected to the public utility (AC) power line shall ensure that the radio frequency voltage, which is conducted back onto the AC power line on any frequency or frequencies within the and 150 kHz-30 MHz, shall not exceed the limits in the following table:

Frequency	Maximum RF Line Voltage	
	Q.P.( dBuV)	Average( dBuV)
150kHz-500kHz	66-56	56-46
500kHz-5MHz	56	46
5MHz-30MHz	60	50

**\*\*Note:** 1. the lower limit shall apply at the band edges.

2. The limit decreases linearly with the logarithm of the frequency in the range 0.15 MHz to 0.50 MHz

### 5.2.2 Block Diagram of Test Setup



### 5.2.3 Test procedure

1. The E.U.T and simulators are connected to the main power through a line impedance stabilization network (L.I.S.N.). This provides a 50ohm/50uH coupling impedance for the measuring equipment.
2. Exploratory measurements were made to identify the frequency of the emission that has the highest amplitude relative to the limit;
3. The peripheral devices are also connected to the main power through a LISN that provides a 50ohm/50uH coupling impedance with 50ohm termination. (Please refer to the block diagram of the test setup and photographs).
4. Both sides of A.C. line are checked for maximum conducted interference. In order to find the maximum emission, the relative positions of equipment and all of the interface cables must be changed according to ANSI C63.4: 2009 on conducted measurement.
5. The bandwidth of test receiver (ESCI) set at 9 KHz.
6. All data was recorded in the Quasi-peak and average detection mode.

### 5.2.4 Test Result

Not applicable to device which is power supplied by dc source.

## 5.3 Radiated Emission

### 5.3.1 Requirement

According to FCC section 15.209(a), except as provided elsewhere in this subpart, the emissions from an intentional radiator shall not exceed the field strength levels specified in the following table:

Frequency (MHz)	Field Strength ( $\mu\text{V}/\text{m}$ at 3-meter)	Test Distance (m)	Field Strength ( $\text{dB}\mu\text{V}/\text{m}$ at 3-meter)
0.009 - 0.490	$2400/F(\text{kHz})$	300	128.5-93.8
0.490 - 1.705	$24000/F(\text{kHz})$	30	73.8-63.0
1.705-30	30	30	69.5
30-88	100	3	40
88-216	150	3	43.5
216-960	200	3	46
Above 960	500	3	54

Note:

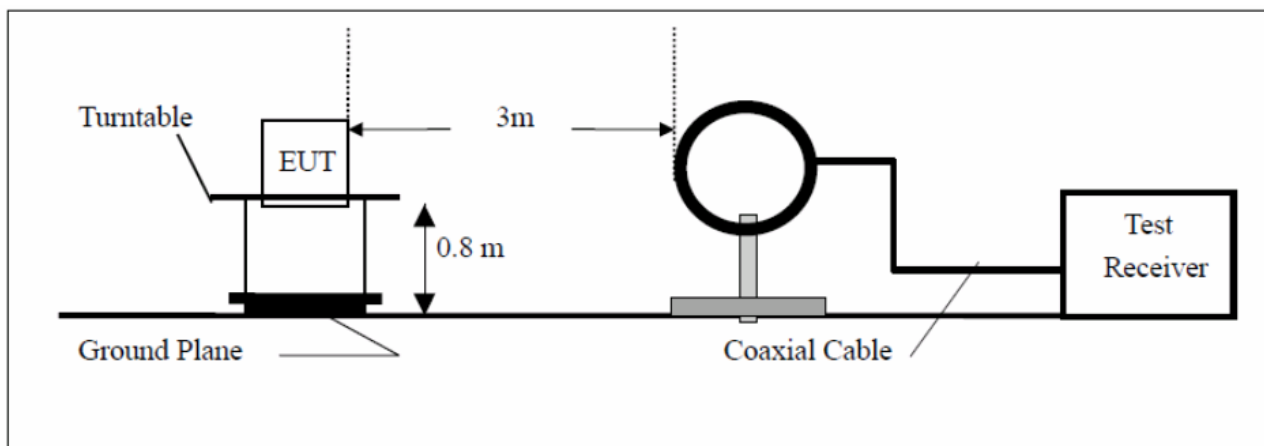
1. For Above 1000MHz, the emission limit in this paragraph is based on measurement instrumentation employing an average detector, measurement using instrumentation with a peak detector function, corresponding to 20dB above the maximum permitted average limit.

2. For above 1000MHz, limit field strength of harmonics: 54dBuV/m@3m (AV) and 74dBuV/m@3m (PK)

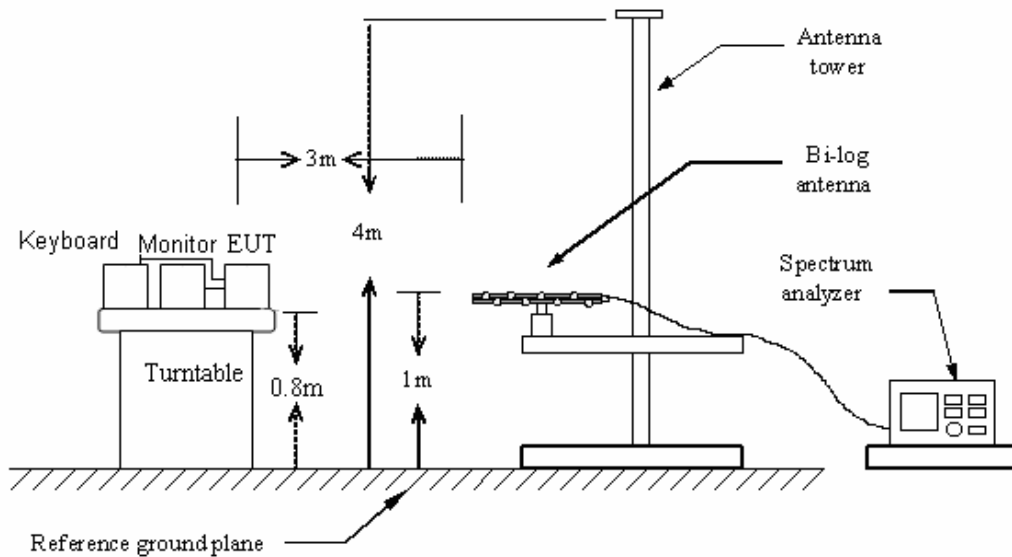
### 5.4.2 Test Configuration

**Test Setup:**

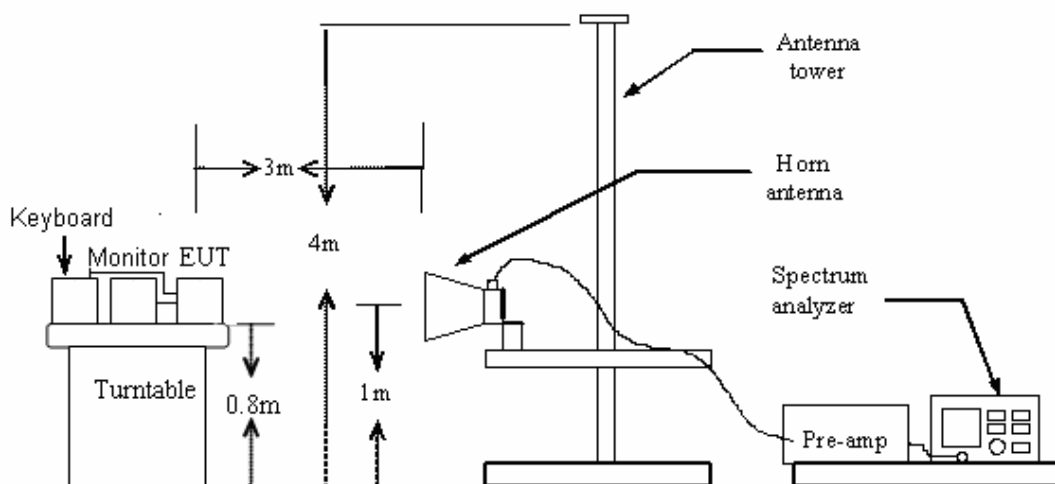
1) For radiated emissions from 9kHz to 30MHz



2) For radiated emissions from 30MHz to 1GHz



### 3) For radiated emissions above 1GHz



#### 5.4.3 Test Procedure:

1. For frequencies above 1GHz, the frequencies of maximum emission was recorded by manually positioning the antenna close to the EUT and by moving the antenna over all sides of the EUT while observing a spectral display.
2. The EUT was placed on the top of a rotating table 0.8 meters above the ground at a 3 meter chamber. The table was rotated 360 degrees to determine the position of the highest radiation.
3. The EUT was set 3 meters away from the interference-receiving antenna, which was mounted on the top of a variable-height antenna tower.
4. The antenna height is varied from one meter to four meters above the ground to determine the maximum value of the field strength. Both horizontal and vertical polarizations of the antenna are set to make the measurement.
5. For each suspected emission, the EUT was arranged to its worst case and then the antenna was tuned to heights from 1 meter to 4 meters and the rote table was turned from 0 degrees to 360 degrees to find the maximum reading.
6. For frequencies above 1GHz, horn antenna mouth should face to the EUT all the time when rise or fall.

7. Set the spectrum analyzer in the following setting as:

9KHz to 30MHz: PEAK: RBW=200Hz / VBW=1 kHz / Sweep=AUTO

30MHz to 1GHz: PEAK: RBW=100 kHz / VBW=300 kHz / Sweep=AUTO QP: RBW=120 kHz / Sweep=AUTO

Above 1GHz: (a) PEAK: RBW=VBW=1MHz / Sweep=AUTO

(b) AVERAGE: RBW=1MHz / VBW=10Hz / Sweep=AUTO

The test-receiver system was set to Peak Detect Function and Specified Bandwidth with Maximum Hold Mode.

8. If the emission level of the EUT in peak mode was 10dB lower than the limit specified, then testing could be stopped and the peak values of the EUT would be reported. Otherwise the emissions that did not have 10dB margin would be re-tested one by one using peak, quasi-peak or average method as specified and then reported in a data sheet.

#### **5.4.4 Test Result**

Pass

Please refer the following pages.

**Fundamental & harmonic frequency measurement:**

Test Frequency (MHz)	Peak (dB $\mu$ V/m)		Limits (dB $\mu$ V/m)	Margin (dB)	
	Vertical	Horizontal		Vertical	Horizontal
0.125	77.10	76.33	125.67	-48.57	-49.34
0.250	---	---	---	---	---
0.375	---	---	---	---	---
0.500	---	---	---	---	---
0.625	---	---	---	---	---
0.750	---	---	---	---	---

**Note:**

1: Limit calculation and transfer to 3m test distance:

According to FCC 15.209 (a)(d), FCC 15.31 (f)(2) and FCC 15.35,

If the frequency between 9 to 490kHz,

$$\text{Limit (AV)} = 20\log(2400/f(\text{kHz})) + 40\log(300/3)$$

$$\text{Limit (Peak)} = \text{Limit (AV)} + 20\text{dB}$$

If the frequency between 490kHz to 1.705MHz,

$$\text{Limit (QP)} = 20\log(24000/f(\text{kHz})) + 40\log(30/3)$$

2: Data of measurement within this frequency range shown “---” in the table above means the reading of emissions are attenuated more than 20 dB below the permissible limits or the field strength is too small to be measured.

**Spurious measurement (other than Fundamental & harmonic frequency):****Below 30MHz:**

<b>Spurious Emission</b>					
<b>Test Frequency (MHz)</b>	<b>Quasi-Peak (dB<math>\mu</math>V/m)</b>		<b>Limits (dB<math>\mu</math>V/m)</b>	<b>Margin (dB)</b>	
	<b>Vertical</b>	<b>Horizontal</b>		<b>Vertical</b>	<b>Horizontal</b>
1.923	25.5	26.5	69.5	43.0	43.0
3.548	25.4	26.1	69.5	44.1	43.4
9.687	25.3	26.2	69.5	44.2	43.3
11.853	25.5	26.5	69.5	44.0	43.0
20.496	25.4	26.6	69.5	44.0	42.9
25.348	25.5	26.4	69.5	44.0	43.1

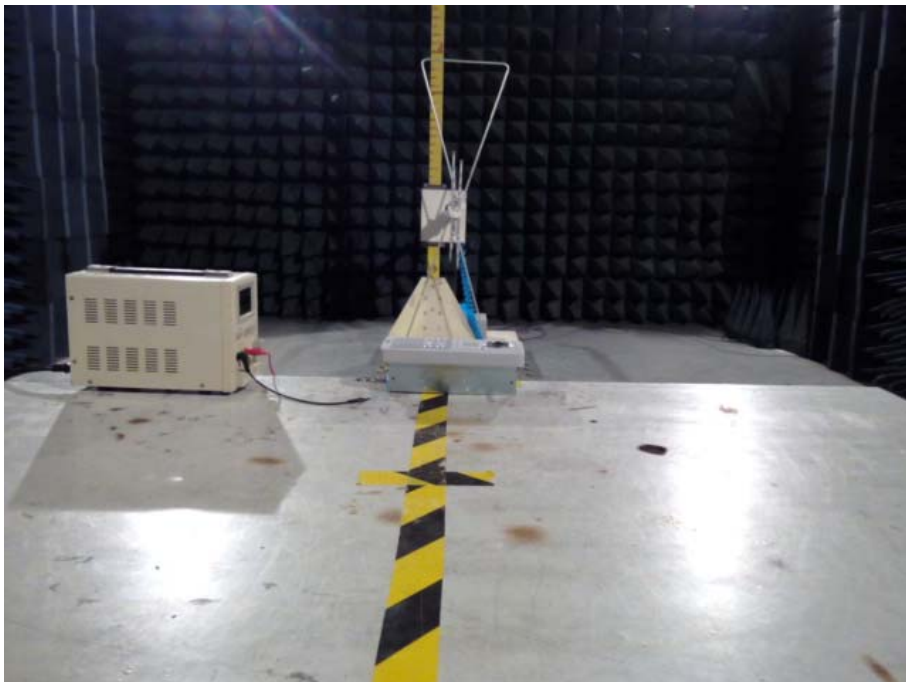
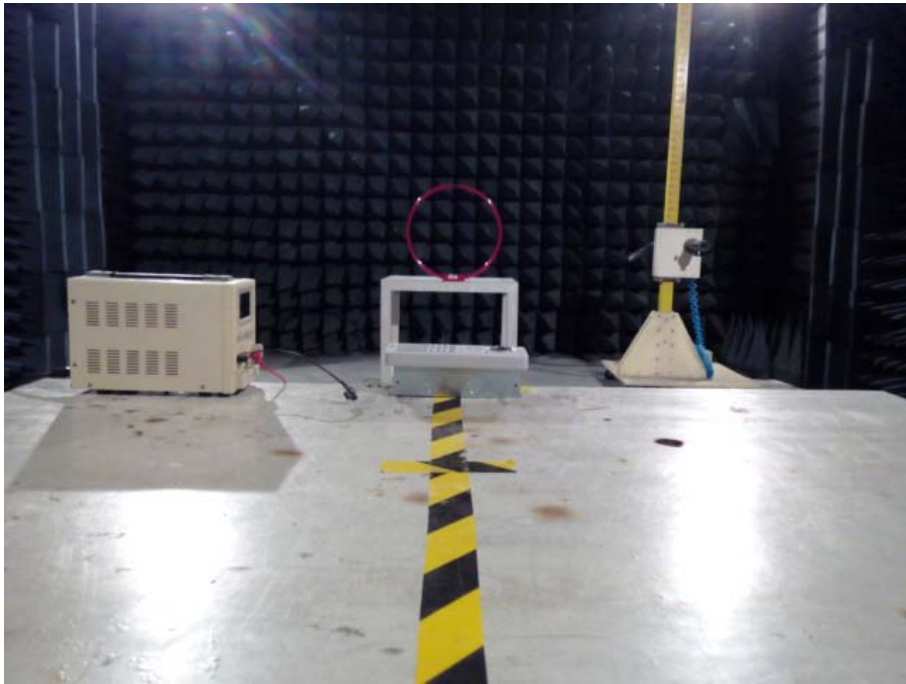
**30MHz-1GHz:**

<b>Spurious Emission</b>					
<b>Test Frequency (MHz)</b>	<b>Quasi-Peak (dB<math>\mu</math>V/m)</b>		<b>Limits (dB<math>\mu</math>V/m)</b>	<b>Margin (dB)</b>	
	<b>Vertical</b>	<b>Horizontal</b>		<b>Vertical</b>	<b>Horizontal</b>
39.025	32.08	26.23	40.00	7.92	13.77
45.535	31.70	35.47	40.00	8.30	4.53
66.266	36.47	35.70	40.00	3.53	4.30
76.244	30.77	31.98	40.00	9.32	8.02
88.342	29.54	34.39	43.50	13.96	9.11
130.379	29.53	28.11	43.50	13.97	15.39

## **APPENDIX 1**

### **PHOTOGRPHS OF TEST SET**

Radiated Emissions Test Setup



End of Report