

Sample Approved Sheet

Hetuo (O2) Acknowledgment

Customer Name Shenzhen Shengyou Technology Co., Ltd

Client Type O2

Brand HT-O2

Hetuo Judgment Audit Team

Formulate	Check	Ratify	Acknowledge the book completion time
Zhongxiaomin	Huxuewen	Daitingting	2023.9.1

Zhenchen (Client) Judgment Audit Team

Acknowledgement Number _____

Proving time

acknowledge	check	ratify	Acknowledge the book completion time

Project Review Three acknowledgements Specifications/drawings

examining report Specimen PCS Safety standard HSF

Appraisal report Accept

Conditional acceptance

Refuse

1. Antenna picture

The report mainly provides the test status of the electrical properties parameters of O2. The O2 antenna is a WIFI 2.42.5GHz Band . The antenna Picture and assembly are shown below. Antenna picture & assembly picture



2. Antenna Test Equipment Introduction

Test of antenna input characteristics using Agilent E5071C and Agilent 5062A vector network analyzer; The radiation pattern of the antenna are tested using the Satimo starlab 3D near field Anechoic Chamber , and the instrument is used to agilent8960 E5515 and Agilent E4438C. The test coordinates of the darkroom are as follows:

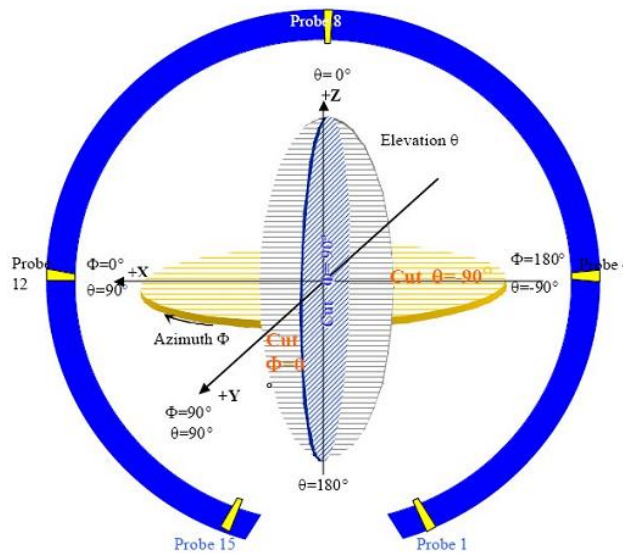


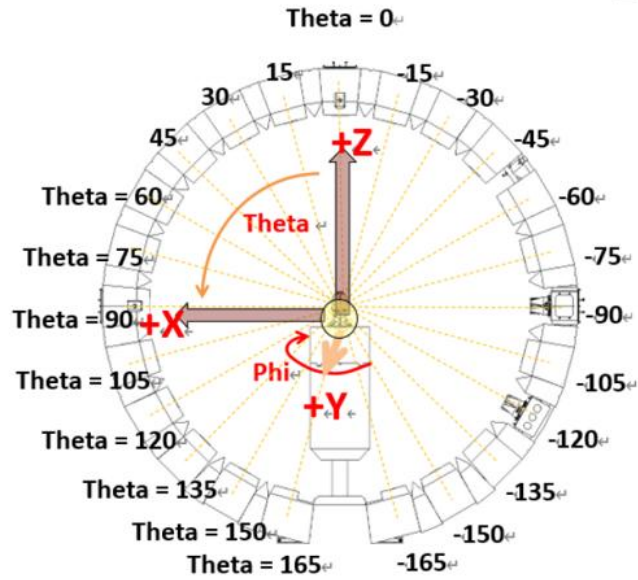
图 4 3D 微波暗室测试坐标系 (back view)

3. Electrical Specification

3-2 Passive S11 parameter

Measuring Method is a 50Ω coaxial cable is connected to the antenna. Then this cable is connected to a network analyzer to measure the S11 parameter, Keeping this fixture away from metal at least 20cm.

Sample status & coordinates

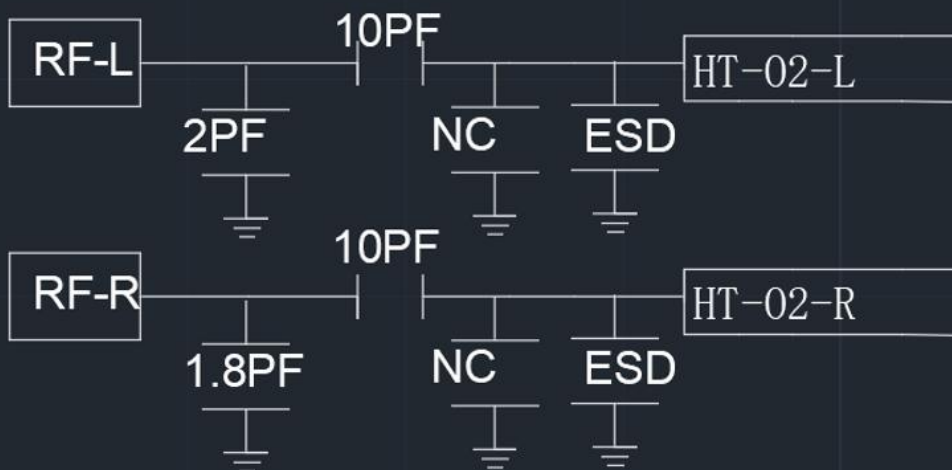


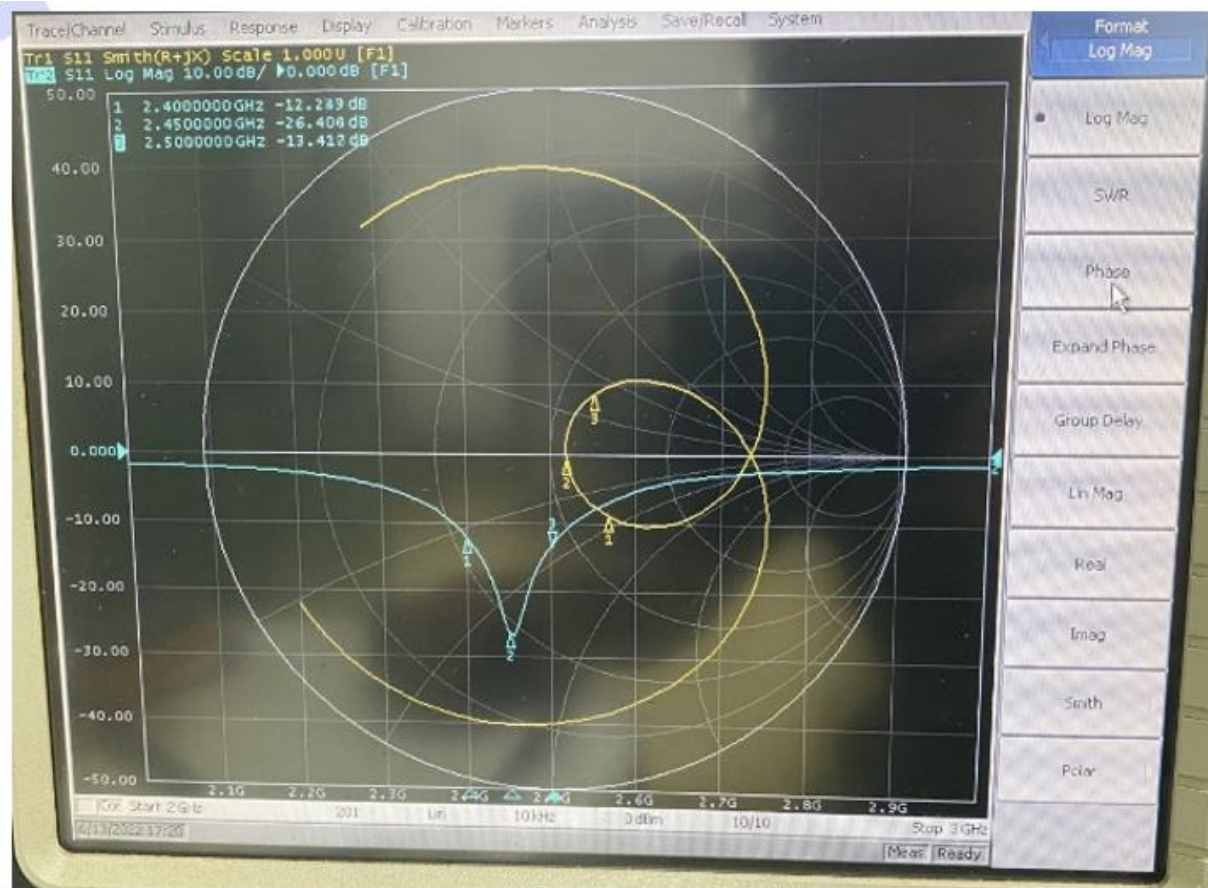
(L/R)

声优

02

2023. 09. 01





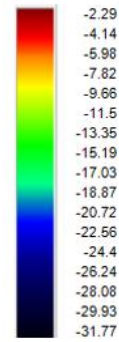
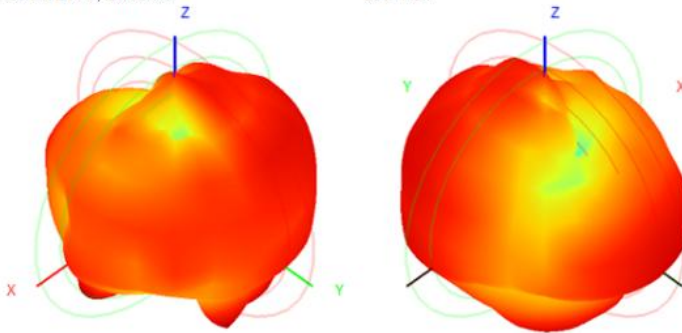
Gain & Efficiency—BT- ANT(L/R)

Frequency (MHz)	Efficiency (%)	Peak GAIN (dBi)
2400	13.49	-2.29
2410	13.88	-1.10
2420	13.96	-0.54
2430	14.62	0.42
2440	15.04	1.05
2450	14.91	1.16
2460	15.18	1.35
2470	14.96	1.23
2480	14.60	0.70
2490	14.97	0.99
2500	14.80	0.61

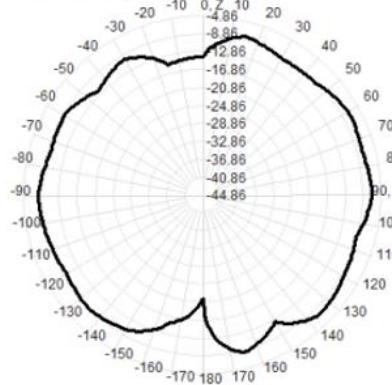
2D&3D BT- ANT

2400.0MHz H+V, Eff: 13.5%

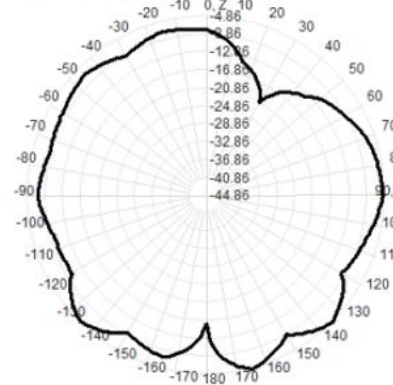
Back View



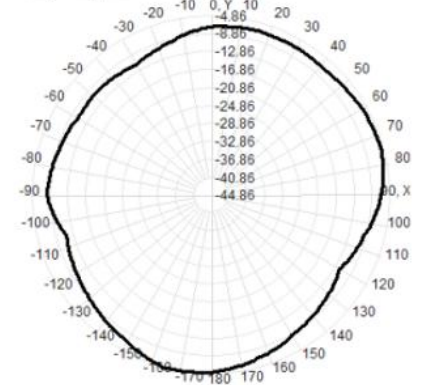
2400.0MHz Total(E1-XZ), Max= -7.07dBi



2400.0MHz Total(E2-YZ), Max= -4.86dBi



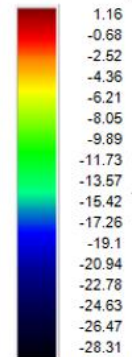
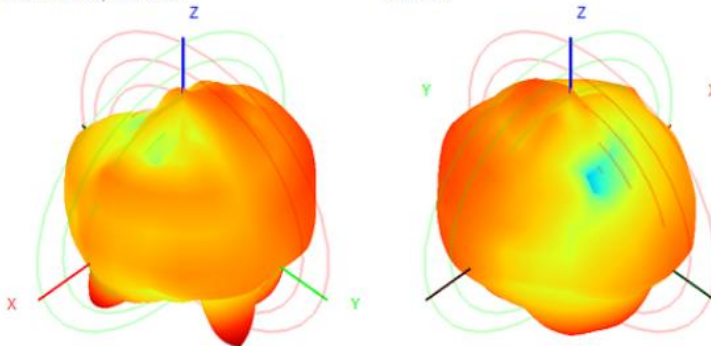
Total(H-XY), Max= -5.13dBi, CirD=6.81



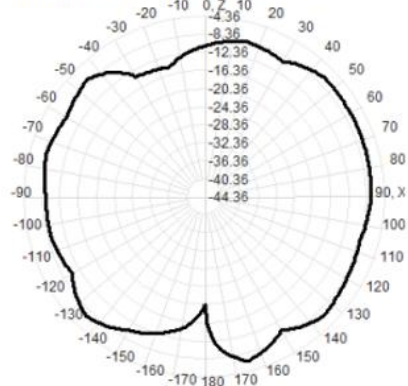
2D&3D BT- ANT

2450.0MHz H+V, Eff: 14.9%

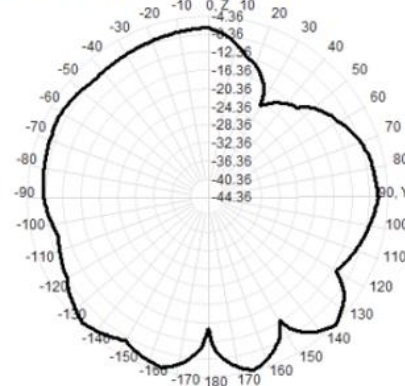
Back View



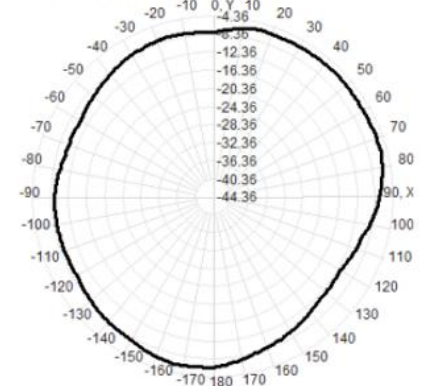
2450.0MHz Total(E1-XZ), Max= -6.93dBi



2450.0MHz Total(E2-YZ), Max= -4.36dBi



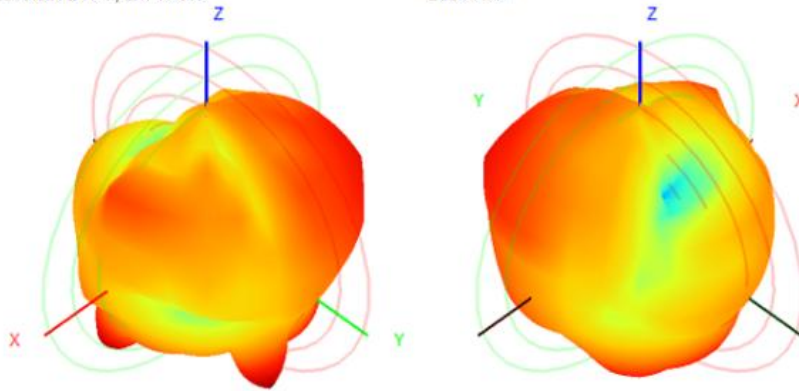
Total(H-XY), Max= -5.91dBi, CirD=6.09



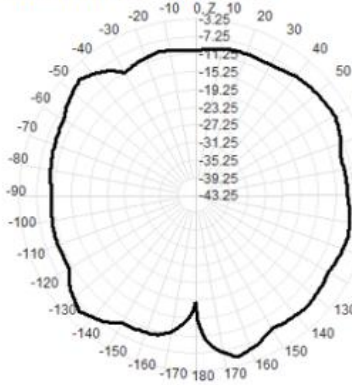
2D&3D BT- ANT

2500.0MHz H+V, Eff: 14.8%

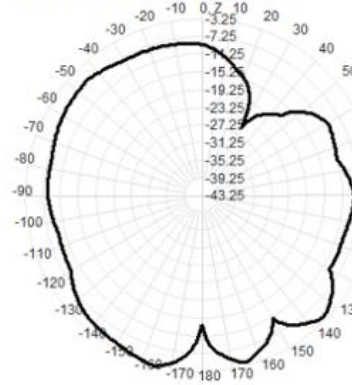
Back View



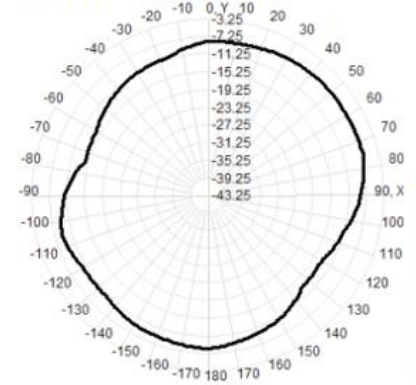
2500.0MHz Total(E1-XZ), Max= -5.58dBi

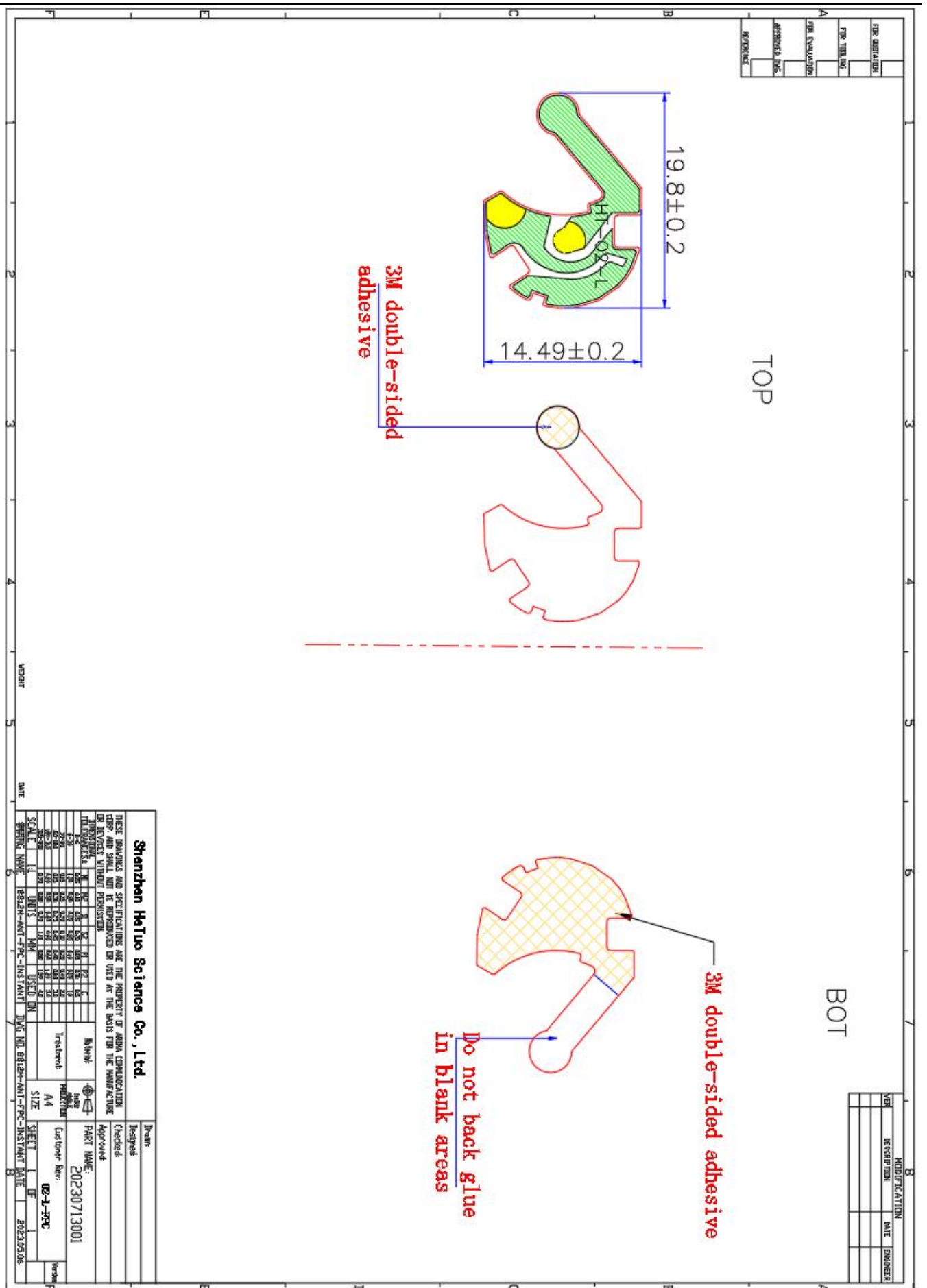


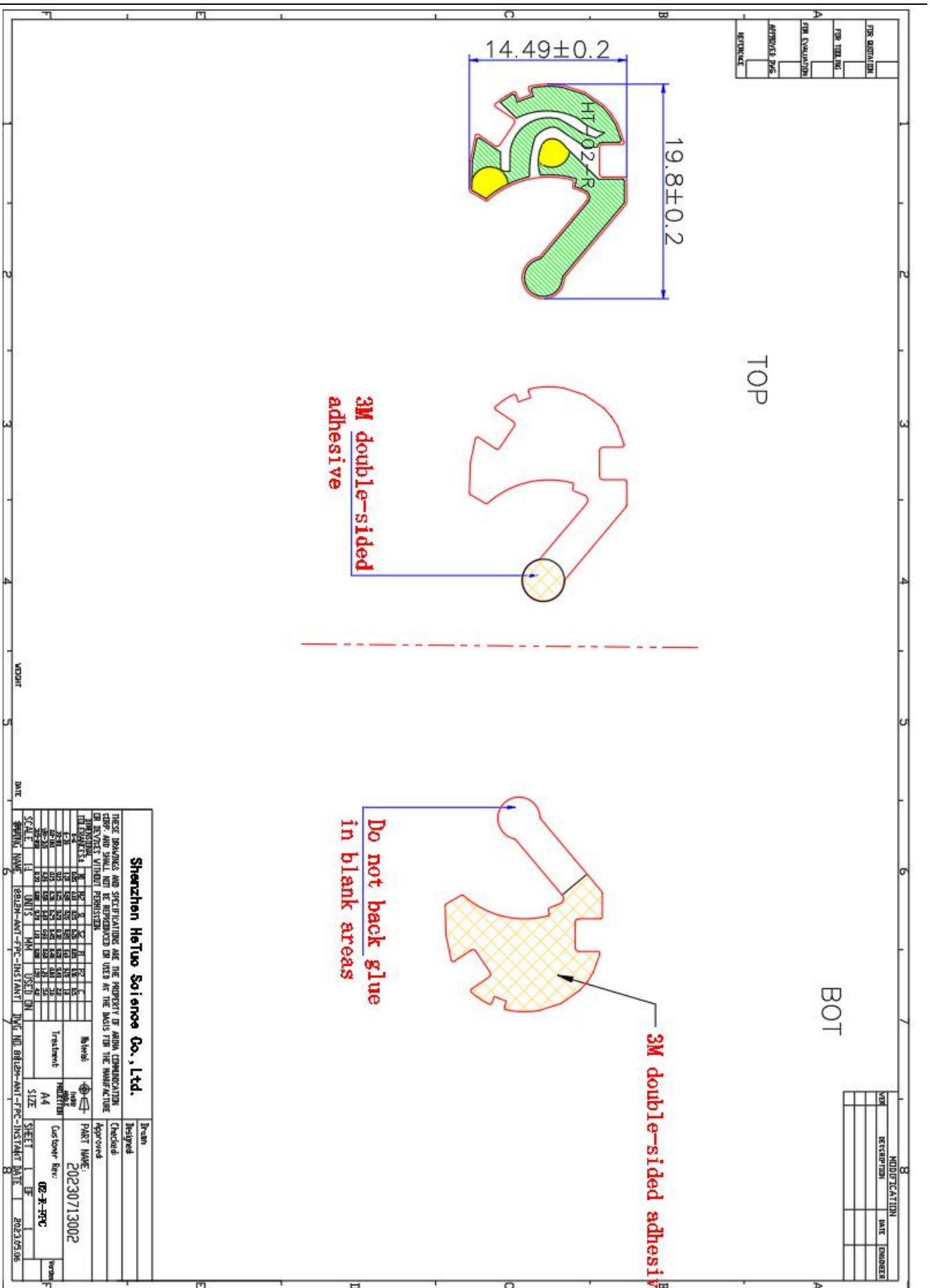
2500.0MHz Total(E2-YZ), Max= -3.25dBi



Total(H-XY), Max= -6.90dBi, CirD=7.53







THE DRAWING	
FOR THE USE OF	
DATE OF EXPIRATION	
APPROVED DES.	
REWORK	

MODIFICATION	
NO.	DATE
DESCRIPTION	ENGINEER

Shenzhen HeTuo Science Co., Ltd.

THESE DIMENSIONS AND SPECIFICATIONS ARE THE PROPERTY OF AUDA COMMUNICATIONS CO., LTD. AND SHALL NOT BE REPRODUCED OR USED AS THE BASIS FOR THE MANUFACTURE OF DEVICES WITHOUT PERMISSION.

DATE: 20230713002

Customer Rev: 02-X-PTC

SCALE	1:1
UNIT	MM
DATE	2023.05.06
DESIGNER	BR1201-ANT-FPC-INSTANT
CHECKER	BR1201-ANT-FPC-INSTANT
DATE	2023.05.06
SIZE	A4
SHEET	1/1
DATE	2023.05.06