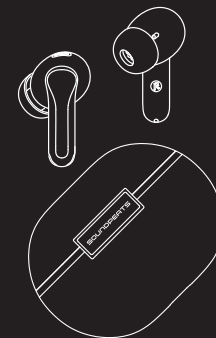


Capsule3 Pro

Capsule3 Pro
WIRELESS EARBUDS



MANUFACTURER
Shenzhen SoundSOUL Information Technology Company Limited
Room 1308-1309, Building B, Huhai Square, Chuangye Road, Longhua District, Shenzhen, China, 518109
support@soundpeats.com
www.soundpeats.com

EC REP

IC ID: Z7785-YK004
FCC ID: 2AFTU-DD032 MADE IN CHINA

Company: Qing UC(haltungsbeschränkt)
Address: Lindenzw. 7, 12033 Berlin Germany

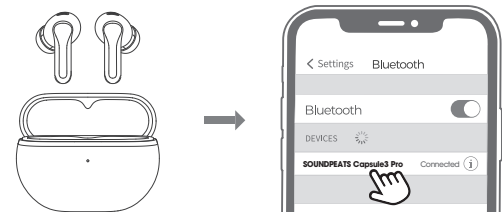
UK REP



TANMET INT'L BUSINESS LTD
9 Rainygrove Road, Pongpradi, Mid Glamorgan, CF37 2RR, UK
tanmetbz@outlook.com

User Guide | Gebrauchsanweisung | Manual de instrucciones |
Mode d'emploi | Istruzioni per l'uso | 取扱説明ガイド | 说明使用指南

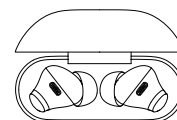
First Start



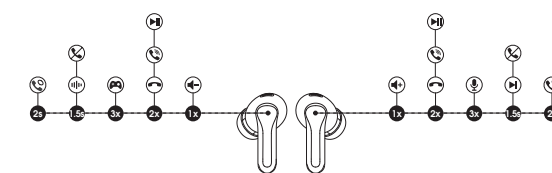
1. Please open the charging case, take out the two earbuds, and tear off the insulating film on the earbuds charging contacts, then put the earbuds back into the charging case and keep the lid open. Long press the button on the charging case for 3 seconds at the same time until the LED indicator on charging case blinking with white light, which indicates that the earbuds have entered pairing mode.
2. Turn on the bluetooth of your device, and please choose "SOUNDPEATS Capsule3 Pro" in the list to pair, then the earbuds will connect with your device.

Reset

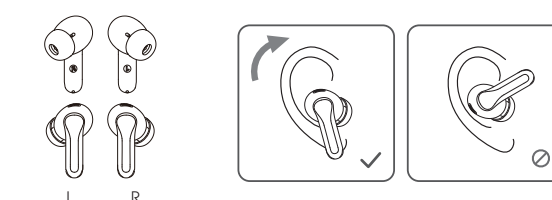
1. Put both earbuds into the charging case properly, and the indicator of the charging case flashes twice.
2. Then, with the lid of the charging case open, long press the button on the charging case for 10 seconds until the LED indicators of the charging case flash white and red light alternately twice, the reset is completed.
3. Close the lid of charging case and open it again, the earphones are activated.



Product Diagram



Wearing



Touch Control

Power on	Automatically: Open the charging case, the earbuds will automatically power on Manually: Long press the touch button for 1.5 seconds
Power Off	Automatically: Place the earbuds back into the charging case and close the lid. Manually: Long press the touch button for 10 seconds
Play/Pause	Double tap the touch button
Volume-	Tap the left touch button once
Volume+	Tap the right touch button once
Play Next	Long Press the right touch button for 1.5 seconds
Answer/Hang up phone call	Double tap the touch button
Reject phone call	Long press the touch button for 1.5 seconds
Switch between two calls	Long press the touch button for 2 seconds
Manually enter into pairing mode	Long press the button on the charging case for 3 seconds
Activate voice assistant	Triple tap the right touch button
Enter/Exit Game Mode	Triple tap the left touch button
Noise reduction/transparency /normal mode switching	Long press the left touch button for 1.5 seconds

Q&A

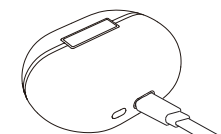
Q1: What does the LED indicator on the charging case mean?

Display remaining power of the charging case:
100%-50% remaining power shows green light
49%-10% remaining power shows yellow light
Under 10% remaining power shows red light

When charging the charging case, the indicator light indicates:
0-19% remaining power, red light flashes slowly
20%-69% remaining power, yellow light flashes slowly
70%-99% remaining power, green light flashes slowly
100% remaining power, green light stay on

Q2: How to charge the charging case?

1. Connect with a Type-C charging adapter to charge the charging case. (Charging current is not greater than 1A).
2. When not using for a long time, please charge it once every three months at least.



Q3: Why are the earphones still connected to the phone when the earphones are put back into the charging case and the charging case is closed?

1. The charging case has no remaining power. The earphone will not power off in charging case when charging case has no power.
2. Make sure the earphones are properly placed in the charging case and the charging metal piece and pin are clean. Please try to clean the charging contact area between the charging box and the earphones with a soft cloth.

FCC Statement

This equipment has been tested and found to comply with the limits for a Class B digital device, pursuant to Part 15 of the FCC rules. These limits are designed to provide reasonable protection against harmful interference in a residential installation. This equipment generates uses and can radiate radio frequency energy and, if not installed and used in accordance with the instructions, may cause harmful interference to radio communications. However, there is no guarantee that interference will not occur in a particular installation. If this equipment does cause harmful interference to radio or television reception, which can be determined by turning the equipment off and on, the user is encouraged to try to correct the interference by one or more of the following measures:
- Reorient or relocate the receiving antenna.
- Increase the separation between the equipment and receiver.
- Connect the equipment into an outlet on a circuit different from that to which the receiver is connected.
- Consult the dealer or an experienced radio/TV technician for help.

This device complies with part 15 of the FCC rules. Operation is subject to the following two conditions:
(1) This device may not cause harmful interference.
(2) This device must accept any interference received, including interference that may cause undesired operation.
Changes or modifications not expressly approved by the party responsible for compliance could void the user's authority to operate the equipment.

IC ID

- English -
This device complies with Industry Canada licence-exempt RSS standard(s). Operation is subject to the following two conditions:
(1) This device may not cause interference, and
(2) This device must accept any interference, including interference that may cause undesired operation of the device.
- French -
Le présent appareil est conforme aux CNR d'Industrie Canada applicables aux appareils radio exempts de licence. L'exploitation est autorisée aux deux conditions suivantes:
(1) L'appareil ne doit pas produire de brouillage, et
(2) l'utilisateur de l'appareil doit accepter tout brouillage radioélectrique subi, même si le brouillage est susceptible d'en compromettre le fonctionnement.

RF warning statement:
The device has been evaluated to meet general RF exposure requirement. The device can be used in portable exposure condition without restriction.