

Free2 classic

Free2 classic
WIRELESS EARBUDS



MANUFACTURER
Shenzhen SoundSOUL Information Technology Company Limited
Room 1308-1309, Building B, Huihai Square, Chuangye Road, Longhua District, Shenzhen, China, 518109
support@soundpeats.com
www.soundpeats.com

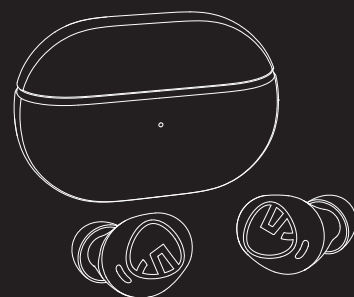
FCC ID: 2AFTU-DD030
IC ID: 27785-YK002

MADE IN CHINA



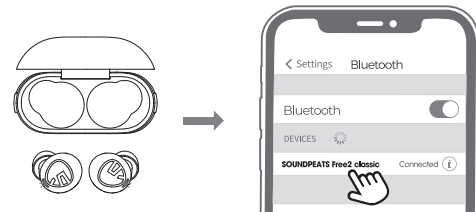
EC REP
Company: Qing UGhaftungsbeschränkt
Address: Andriewer, 7, 12029 Berlin Germany

UK REP
TAMMET INT. BUSINESS LTD
9 Parrygreggway Road, Pontypool, Mid Glamorgan, CF37 2BQ UK
tammetbiz@outlook.com



User Guide | Gebrauchsanweisung | Manual de instrucciones |
Mode d'emploi | Istruzioni per l'uso | 取扱説明ガイド | 說明使用指南

First Time of Using

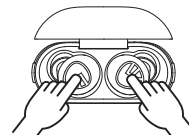


1. Open the charging case lid and take out both earbuds. Two earbuds will turn on and enter pairing mode.
2. When the earbuds pair successfully, the red and white lights on the main earbud will flash alternately, the white light on the secondary earbud will stay on. Now you can connect the earbuds to your device.
3. Activate the Bluetooth on your device and choose "SOUNDPEATS Free2 classic" to connect.

1

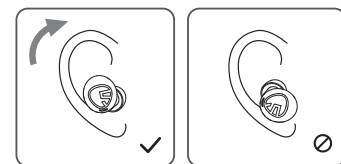
Reset

Open the case lid, make sure both earbuds are charging (the red lights on earbuds stay on). Press and hold the MFBs on both earbuds for 10 seconds until the red and white lights flash twice alternately, reset complete.



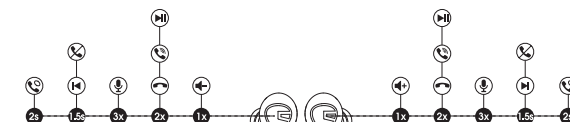
Wearing

1. Identify the left and right earbuds.
2. Rotate earbuds and find the most comfortable position.



2

Product Diagram



3

Control

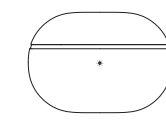
Power On	Auto: Open the case lid and take out both earbuds Manually: Press and hold the MFB for 1.5s
Power Off	Auto: Place back into charging case Manually: Press and hold the MFB for 10s
Play / Pause	Double tap the MFB
Volume -	Single tap the left MFB
Volume +	Single tap the right MFB
Previous Track	Press and hold left MFB for 1.5s
Next Track	Press and hold right MFB for 1.5s
Answer / Hang Up Phone Call	Double tap the MFB
Reject Phone Call	Press and hold the MFB for 1.5s
Switch Between Two Calls	Press and hold the MFB for 2s
Manually Enter Pairing Mode	Press and hold the MFB for 6s
Activate Voice Assistant	Triple tap the right MFB

4

Q&A

Q1: What does the indicator on the charging case tell?

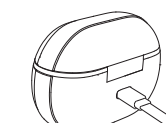
When charging the charging case, the indicator light shows:
1. Charging: blue light flashes
2. Fully charged: blue light stays on



5

Q2: How to charge the charging case?

1. Use a Type-C adapter to charge the case (current no more than 1A).
2. Please charge the earbuds and charging case at least once per 3 months when not in use for a long time.



6

Q3: Why are the earbuds still connecting to my phone after placing them back and closing the case lid?

1. The charging case has no remaining power. Placing the earbuds back into the charging case can't turn them off if the case battery is dead.
2. Please make sure the earbuds are correctly placed in the charging case, and make sure the charging contactors are clean. Please try to clean the places between the charging case and the earbuds with something like a microfiber cloth.

7

FCC Statement

This equipment has been tested and found to comply with the limits for a Class B digital device, pursuant to Part 15 of the FCC rules. These limits are designed to provide reasonable protection against harmful interference in a residential installation. This equipment generates uses and can radiate radio frequency energy and, if not installed and used in accordance with the instructions, may cause harmful interference to radio communications. However, there is no guarantee that interference will not occur in a particular installation. If this equipment does cause harmful interference to radio or television reception, which can be determined by turning the equipment off and on, the user is encouraged to try to correct the interference by one or more of the following measures:
- Reorient or relocate the receiving antenna.
- Increase the separation between the equipment and receiver.
- Connect the equipment into an outlet on a circuit different from that to which the receiver is connected.
- Consult the dealer or an experienced radio/TV technician for help.

This device complies with part 15 of the FCC rules. Operation is subject to the following two conditions:
(1) This device may not cause harmful interference.
(2) This device must accept any interference received, including interference that may cause undesired operation.
Changes or modifications not expressly approved by the party responsible for compliance could void the user's authority to operate the equipment.

IC ID

- English: *
This device complies with Industry Canada licence-exempt RSS standard(s). Operation is subject to the following two conditions:
(1) this device may not cause interference, and
(2) this device must accept any interference received, including interference that may cause undesired operation of the device.

- French: *
Le présent appareil est conforme aux CNR d'Industrie Canada applicables aux appareils radio exempts de licence. L'exploitation est autorisée aux deux conditions suivantes:
(1) l'appareil ne doit pas produire de brouillage, et
(2) l'utilisateur de l'appareil doit accepter tout brouillage radioélectrique subi, même si le brouillage est susceptible d'en compromettre le fonctionnement.

RF warning statement:
The device has been evaluated to meet general RF exposure requirement. The device can be used in portable exposure condition without restriction.

7