

QUICK
START
GUIDE

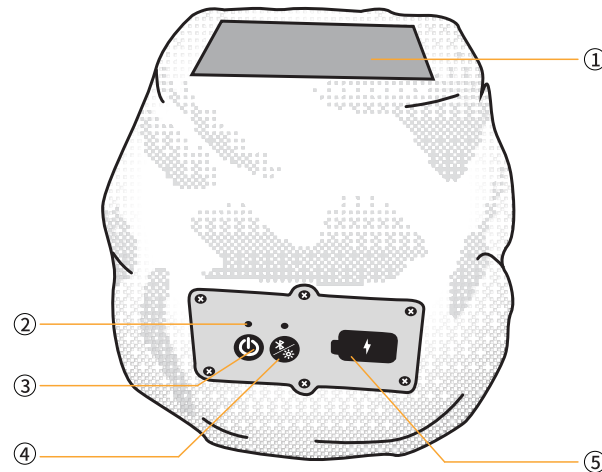


LED ROCK
STONE

Before operation, it is imperative to carefully peruse the instructional manual.

S312

Product Diagram



1. Solar Charging Panel

2. Indicator

3. Power button
4. Bluetooth/Light Button

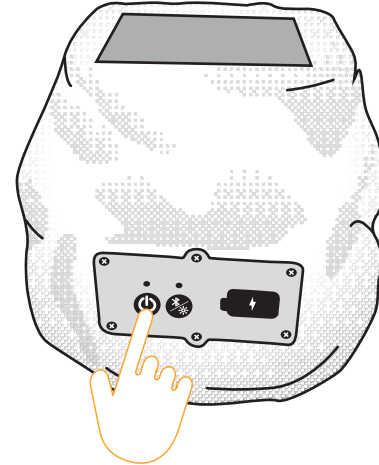
5. Wall Charger Input Jack

| Function | What to do |
|-------------------------------|-------------------------|
| Power on/off | Press and hold for 2s |
| Restart the speaker | Press and hold for 10s |
| Enable/Disable Standby Mode | Press once |
| Disconnect | Press and hold for 2s |
| Reconnect | |
| Light on/Switch lighting mode | Press once |
| Enter/Exit Pairing Mode | Double Click |

POWER ON/OFF

Press and hold the power button for 2 seconds.
The speaker will just enable or disable standby mode if only press power button once.

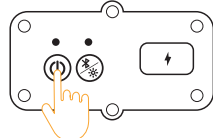
Press and hold for 2s



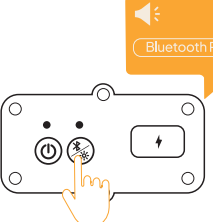
Hint
In the event such as following, press and hold the power button for about 10 seconds to restart the speaker.
-- You can not operate the speaker after you turn it on.
-- You can not operate the speaker after you troubleshoot pairing issues.

BLUETOOTH CONNECTIONS

Connect using the Bluetooth menu on your mobile device



1. Press and hold button to power on the speaker.



2. Double Click button to pair.



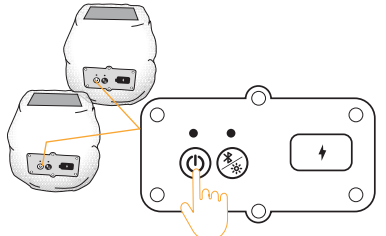
3. On your device enable the Bluetooth feature. Select LED Rock Stone from the device list. After successful pairing, the panel indicator will states solid blue.

Hint
Upon connecting one speaker to your Bluetooth device, the other speakers will promptly enter Multi-Sync mode, either TWS or Party modes, as they power on. This will enable all speakers to play sync.

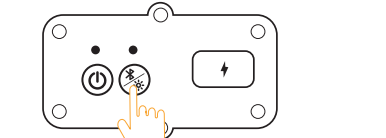
Reconnect a mobile device

When powered on, you need to double click the Bluetooth button firstly and the speaker tries to reconnect with the most recently-connected devices.

Listening to music wirelessly with 2 speakers (TWS)



1. Make sure both speakers are powered on.



2. Double click the Bluetooth button on **ONE** of the two speakers.



3. Make sure one speaker is connected to your device.



4. Stereo mode is enabled, and you are now able to play audio in unison using your mobile device.

Note: Performance may vary based on mobile device, distance and environmental factors.

For an optimal experience, position your speakers:
• In the same room or outdoor area
• So there are no obstructions between them.

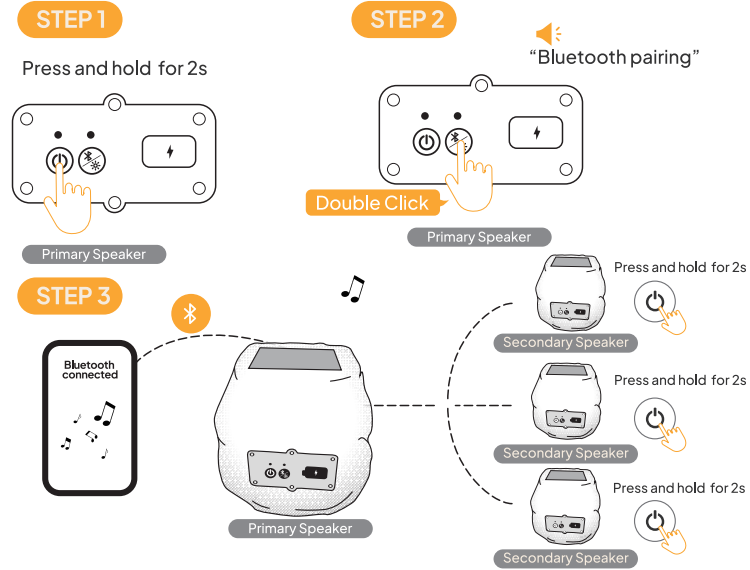
Enjoying wireless playback using multiple speakers (Party Mode)

You can connect multiple speakers (up to 100 speakers) compatible with the Multi-Sync mode via BLUETOOTH connections and enjoy music playback.

1.Make sure one speaker is connected to your Bluetooth device.

2.On additional speakers, press and hold the power button for 2 seconds to turn them on.

3.Multi-sync mode is enabled, and you are now able to play audio in perfect sync using your mobile device.



NOTE

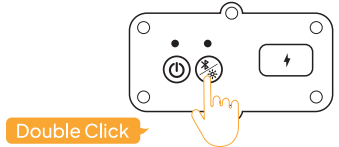
- When multiple speakers are successfully synced, Only the blue light on the panel of the primary speaker will remain on, the indicator of the other speakers will flash.
- To adjust volume, please use your mobile phone. When you power off the primary speaker, all connected speakers will power off.

05/

Switch the Primary Speaker

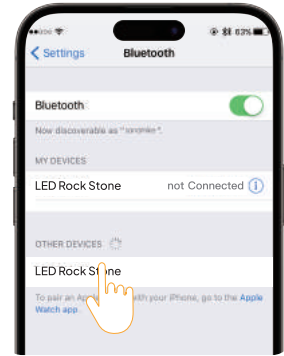
STEP 1

On the desired speaker, double click the Bluetooth button to set that speaker as Primary speaker. On the previous primary speaker, also double click the bluetooth button into paring mode.



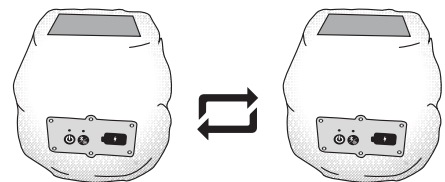
STEP 2

On your device Bluetooth Settings, tap another LED Rock Stone.



STEP 3

Wait a few seconds, then press the play on your mobile to resume audio playback, at which point the Primary speaker will have switched.

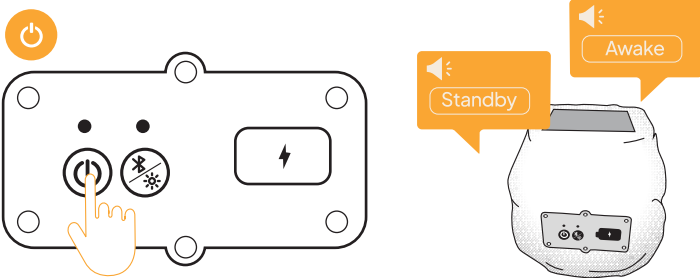


06/

Turning on/off the Standby function

Enable Standby Mode to keep the sync settings so you don't have to repeat the synchronization processes the next time.

* The speakers will consume a small amount of power in Standby Mode.

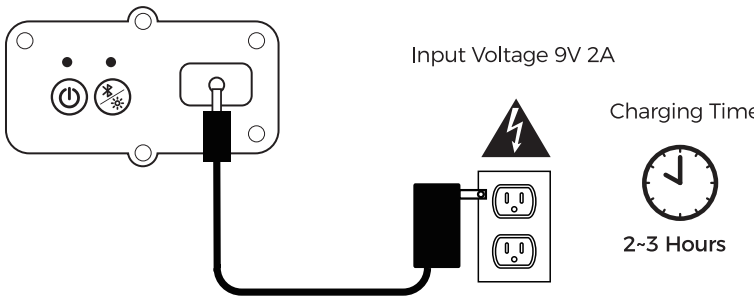


1. Short press once the power button on the Primary speaker. When you hear "Standby", the Standby function is turned on.
2. Another press on Power button, when you hear "Awake", the Primary Speaker will automatically reconnect with the Secondary Speakers.

CHARGING YOUR SPEAKER

When charging, the LED indicator will light up solid red.

When fully charged, the LED indicator will go out.



07/

SPECIFICATIONS

| | |
|-------------------|----------------|
| Produce Name | LED Rock Stone |
| Charging Time | 2~3 Hours |
| Connection Method | Bluetooth |
| Waterproof Level | IPX7 |
| Bluetooth Version | Bluetooth 5.4 |

SAFETY PRECAUTIONS

Please follow the instructions for all operations and use.

1. Do not charge near a water source or in the rain to prevent electric shock.
2. Do not damage the cable, especially the connectors.
3. Unplug the Charging adaptor when it is not in use or during a thunderstorm.
4. Please keep the speaker away from heat sources (including all equipment that generates heat), such as stoves.
5. Do not expose the speaker to extreme temperatures for a long time. Excessive heat or extreme cold temperatures may damage the battery.
6. Do not attempt to disassemble the speaker.

08/

ONE YEAR WARRANTY

1. Our products are covered by a 12-month limited warranty, starting from the date of purchase. This warranty is not transferable and applies only to the original consumer purchaser.
2. For quality-related issues, we will, at its sole option, repair or replace any products that malfunction due to defective parts or workmanship at no charge to you.

Not Covered Under Warranty:

- Damage from outside sources
- Damage from misuse of products(including,but not limited to: falls, extreme temperatures, water, operating devices improperly, incorrect connections, incorrect battery use)
- Damaga caused by accident, improper care, negligence, excessive wear and tear, or improper installation or assembly contrary to any written installation instruction
- Items that have expired their warranty period
- Non quality-related issues(after 30 days of purchase)
- Repairs through 3rd parties
- Any questions, please feel free to contact us.

After-Sales Service Tel:
1(970)364-2868

After-Sales Email:
support@bolabutty.com

09/

170*650mm正反面印刷 5折，105G铜版纸

FCC Caution.

This device complies with part 15 of the FCC Rules. Operation is subject to the following two conditions:

- (1) This device may not cause harmful interference, and
- (2) this device must accept any interference received, including interference that may cause undesired operation.

Any Changes or modifications not expressly approved by the party responsible for compliance could void the user's authority to operate the equipment.

Note: This equipment has been tested and found to comply with the limits for a Class B digital device, pursuant to part 15 of the FCC Rules. These limits are designed to provide reasonable protection against harmful interference in a residential installation. This equipment generates uses and can radiate radio frequency energy and, if not installed and used in accordance with the instructions, may cause harmful interference to radio communications. However, there is no guarantee that interference will not occur in a particular installation. If this equipment does cause harmful interference to radio or television reception, which can be determined by turning the equipment off and on, the user is encouraged to try to correct the interference by one or more of the following measures:

- Reorient or relocate the receiving antenna.
- Increase the separation between the equipment and receiver.
- Connect the equipment into an outlet on a circuit different from that to which the receiver is connected.
- Consult the dealer or an experienced radio/TV technician for help.

FCC Radiation Exposure Statement:

This equipment complies with FCC radiation exposure limits set forth for an uncontrolled environment. This equipment should be installed and operated with minimum distance 20 cm between the radiator & your body.