

# BathSinger QuickStart Guide

## BLUETOOTH CONNECTION



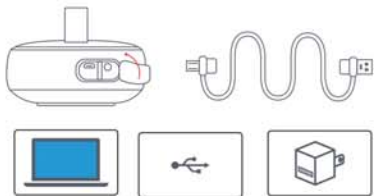
## INDICATOR LIGHT

Blue indicator light		Red indicator light	
Pairing search	Blue light flashes slowly	Charging	Red light on
Paired successfully	Blue light on	Finished charging	Red light off
Bluetooth disconnect	Blue light flashes slowly		
Line in access	Blue light on		
TWS pairing search	Blue light flashes quickly		
TWS Paired successfully	The main machine flashes slowly, and the auxiliary machine lights up		

## PRODUCT INFORMATION

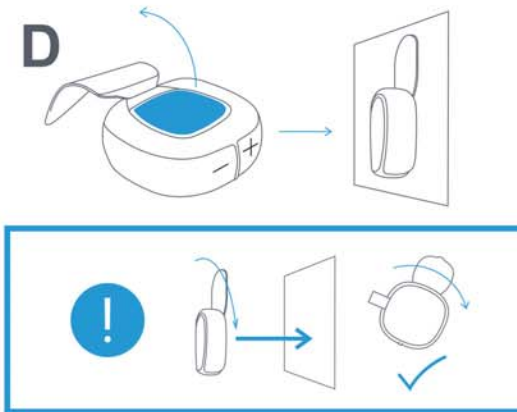
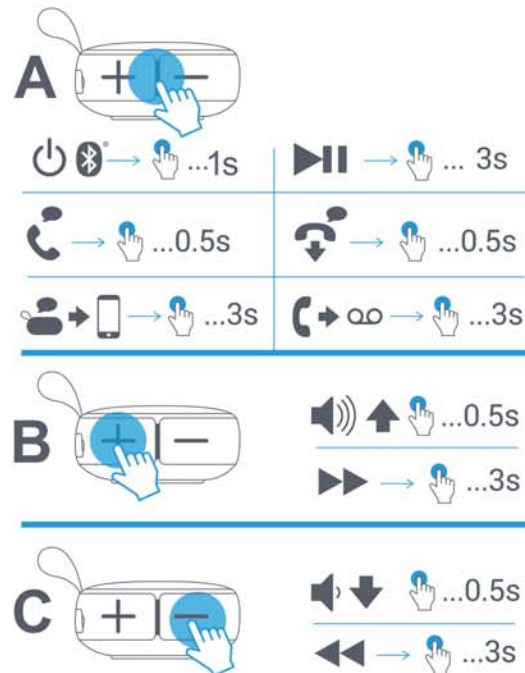
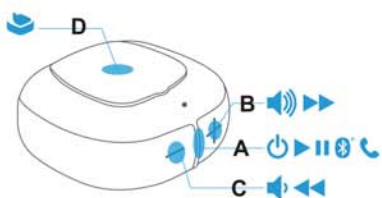
Rated Power	<b>5W</b>
Bluetooth	<b>Bluetooth v5.1</b>
Effective Distance	<b>≤30m</b>
Frequency Response	<b>100Hz~18kHz</b>
Battery Capacity	<b>1000mAh</b>
Chip Model	<b>AC6969D</b>
Power Amplifier Ic	<b>Ht8692</b>
Input Voltage	<b>5V1A</b>
Charging Time	<b>3h</b>
Size	<b>113X46.5X130.5mm</b>
Product Weight	<b>≈181g</b>

## CHARGING WAYS



Multiple charging methods

## USE INSTRUCTIONS



### NOTE:

1. Please make sure the wall is dry before pasting.
2. The sticker can be used repeatedly.
3. Dust will affect the stickiness of the sticker. It can be rinsed with water and then dried. After drying, the viscosity will be restored.
4. When pasting, please tilt it appropriately, it will be firmer.

## FCC Statement

Changes or modifications not expressly approved by the party responsible for compliance could void the user's authority to operate the equipment. This equipment has been tested and found to comply with the limits for a Class B digital device, pursuant to Part 15 of the FCC Rules. These limits are designed to provide reasonable protection against harmful interference in a residential installation. This equipment generates uses and can radiate radio frequency energy and, if not installed and used in accordance with the instructions, may cause harmful interference to radio communications. However, there is no guarantee that interference will not occur in a particular installation. If this equipment does cause harmful interference to radio or television reception, which can be determined by turning the equipment off and on, the user is encouraged to try to correct the interference by one or more of the following measures:

- Reorient or relocate the receiving antenna.
- Increase the separation between the equipment and receiver.
- Connect the equipment into an outlet on a circuit different from that to which the receiver is connected.
- Consult the dealer or an experienced radio/TV technician for help

This device complies with part 15 of the FCC rules. Operation is subject to the following two conditions (1) this device may not cause harmful interference, and (2) this device must accept any interference received, including interference that may cause undesired operation.