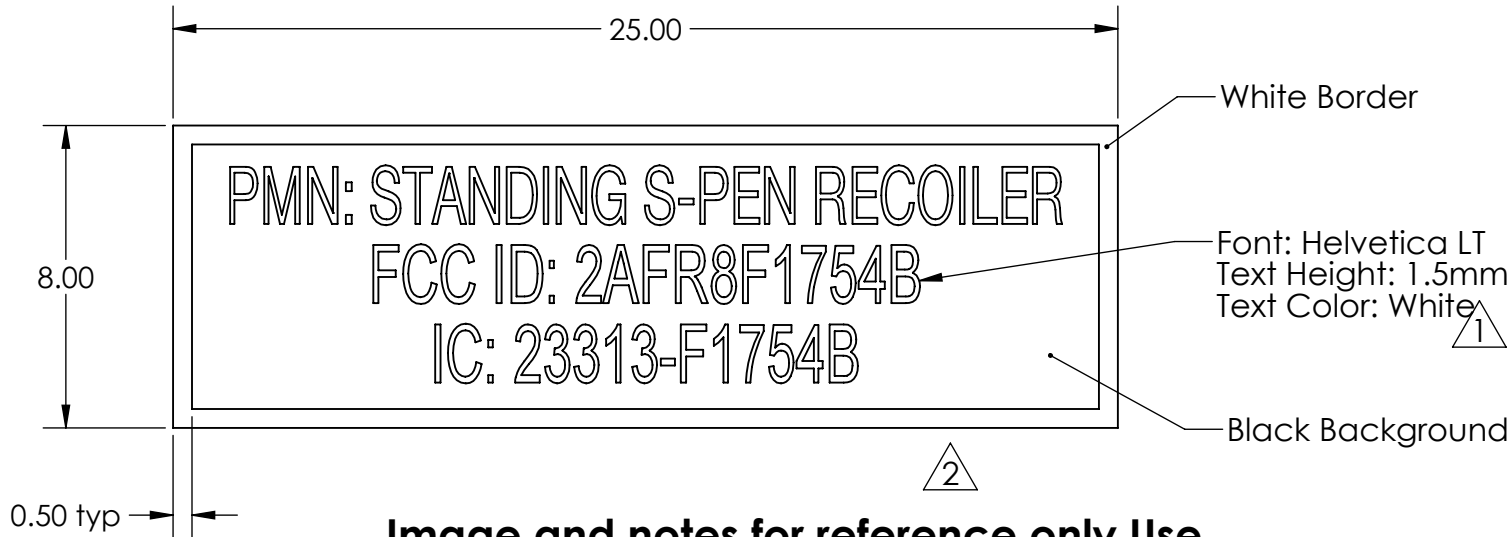


SHEET 1 OF 1	
DRAWING NO.	REV
F1754050	2

REVISIONS				
REV	DESCRIPTION	RELEASED	CHECKED	DATE
0	Initial release.	DCS	JAR	19JUN2019
1	Updated Text Color	DCS		22-Jun-19
2	Changed FCC ID and IC last digit from A to B	AJ		14Aug2019



**Image and notes for reference only Use
InVue Graphic File G00109.ai for printing.**

Notes:

1. Material: 0.06mm Mylar with 0.06mm clear layer and adhesive backing.
2. image and notes for reference only. Use InVue graphic file as noted above for printing.

TOLERANCE TABLE (MM) UNLESS OTHERWISE SPECIFIED	
DIMENSION	TOLERANCE
L ≤ 5	±0.10
5 < L ≤ 20	±0.15
20 < L ≤ 65	±0.25
65 < L ≤ 150	±0.35
150 < L	±0.50
ANGLES	±2

		InVue Security Products 9201 Baybrook Lane Charlotte, NC 28277 Phone: (704) 752-6513	
		PROPRIETARY AND CONFIDENTIAL <small>THIS DRAWING IS PROPERTY OF INVUE SECURITY PRODUCTS, INC. AND IS LOANED UPON CONDITION THAT IT IS NOT TO BE REPRODUCED OR COPIED IN WHOLE OR IN PART, OR USED FOR FURNISHING INFORMATION TO OTHERS, OR FOR ANY OTHER PURPOSE DETRIMENTAL TO THE INTEREST OF INVUE SECURITY PRODUCTS, INC. AND WILL BE RETURNED UPON REQUEST</small>	
TITLE FCC Label Davinci S-Pen		PROJECT NO. F1754	ENGINEER DS
UNITS MM	MASS (GRAMS) 0.0	SHEET 1 OF 1	DRAWING NO. F1754050