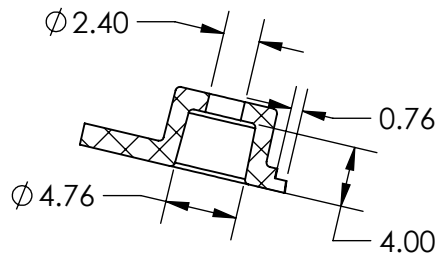
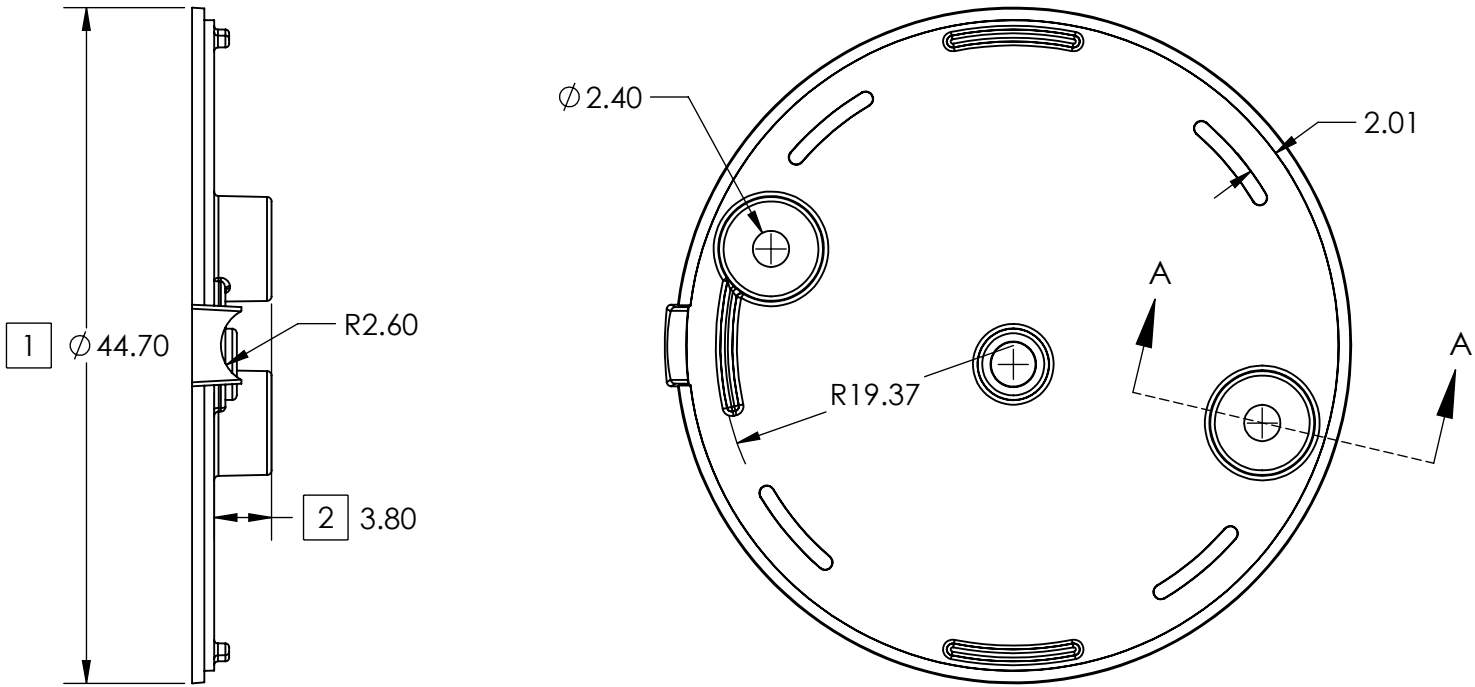
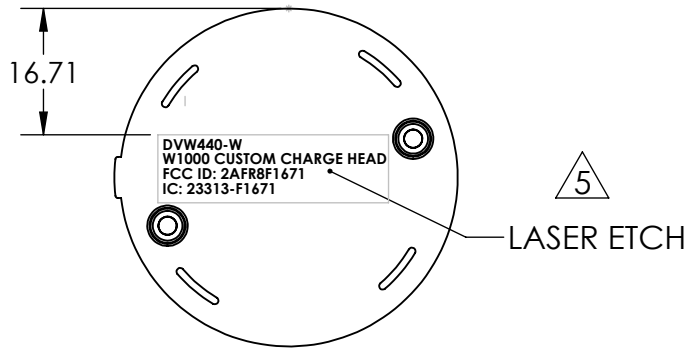
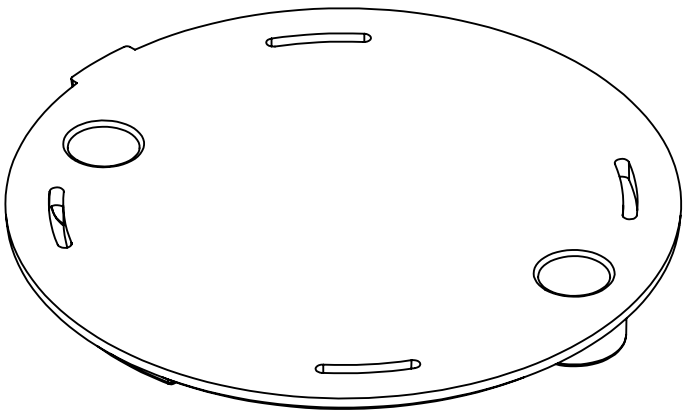


REVISIONS

| REV | DESCRIPTION | RELEASED | CHECKED | DATE |
|-----|---|----------|---------|-----------|
| 0 | Initial release. | AJ | JAR | 06/11/18 |
| 1 | DFM Changes | AJ | | 6/12/2018 |
| 2 | Changed Lid color to Grey, laser etch FCC | AJ | | 7/11/2018 |
| 3 | Change material updated Laser Etch note | AJ | | 7/12/2018 |
| 4 | Changed Lid color to White | AJ | | 7/31/2018 |
| 5 | Added Order code to Laser Etch | AJ | | 8/20/2018 |



SECTION A-A



Notes:

- Material: ABS Chi Mei PA-747.
- Texture and Polish unless otherwise specified to be:
Cavity: MT1055-2
Core: B2
- ☒ Designates numbered dimensions considered critical to fit or function and must be controlled.
- All dimensions per 3D CAD model unless otherwise specified.
- Must comply with InVue specification INV-IMPS1, (general injection molding part specification) and INV-COL1 (general color specification).
- Must be RoHS compliant.
- Color: C00288, White
- Laser Etch FCC and ICC code as shown

| TOLERANCE TABLE (MM) UNLESS OTHERWISE SPECIFIED | |
|--|-----------|
| DIMENSION | TOLERANCE |
| L ≤ 5 | ±0.10 |
| 5 < L ≤ 20 | ±0.15 |
| 20 < L ≤ 65 | ±0.25 |
| 65 < L ≤ 150 | ±0.35 |
| 150 < L | ±0.50 |
| ANGLES | ±2 |

inVue InVue Security Products
9201 Baybrook Lane
Charlotte, NC 28277
Phone: (704) 752-6513

PROPRIETARY AND CONFIDENTIAL
THIS DRAWING IS PROPERTY OF INVUE SECURITY PRODUCTS, INC. AND IS LOANED UPON
CONDITION THAT IT IS NOT TO BE REPRODUCED OR COPIED IN WHOLE OR IN PART, OR USED FOR
FURNISHING INFORMATION TO OTHERS, OR FOR ANY OTHER PURPOSE DETRIMENTAL TO THE
INTEREST OF INVUE SECURITY PRODUCTS, INC. AND WILL BE RETURNED UPON REQUEST.

TITLE
LID

| | | |
|-----------------------------|-----------------------------|--------------------------------|
| PROJECT NO. F1671 | ENGINEER DS | DRAWING NO. F1671003 |
| UNITS MM | MASS (GRAMS) 2.42 | SHEET 1 OF 1 |