



# CUE 2.0

# USER MANUAL

VERSION 1.2

August 15, 2020

# Revision Control

Version	Release Date	Description	Author
1.0	18 JUN 2020	Initial Release	S. Kadiwala (MPC)
1.1	4 JUL 2020	Update to Section 6.1 (eLabel)	S. Kadiwala (MPC)
1.2	15 AUG 2020	Update to IC notices, Section 5.0. Re-number and update section 6.1 to 7.0 and added notes on regulatory info access at any time.	S. Kadiwala (MPC)

# **TABLE OF CONTENTS**

<b>1.0 INTENDED USE .....</b>	<b>1</b>
<b>2.0 INSTALLATION &amp; SETUP INSTRUCTIONS .....</b>	<b>1</b>
<b>3.0 REGULATORY INFORMATION &amp; NOTICE .....</b>	<b>3</b>
<b>3.1 §15.19 Label Interference Note for FCC Part 15 .....</b>	<b>3</b>
<b>3.2 §15.21 Modifications Note .....</b>	<b>3</b>
<b>3.3 §15.105 Class B Digital Device - Interference Note .....</b>	<b>3</b>
<b>4.0 RF EXPOSURE REQUIREMENTS .....</b>	<b>4</b>
<b>5.0 INDUSTRY CANADA (IC) STATEMENTS .....</b>	<b>4</b>
<b>6.0 REGULATORY IDENTIFICATION INFORMATION .....</b>	<b>5</b>
<b>7.0 REGULATORY INFORMATION ACCESS.....</b>	<b>5</b>



## 1.0 INTENDED USE

This device is a Smart badge worn around the neck with an appropriate lanyard as provided, or recommended, by Proxfinity, Inc. The placement of the badge should be somewhere on the torso of the individual, though actual height may vary from person to person.

For certain use-cases, the device can also be hand-held, to access physical keys located on the bottom surface of the badge.

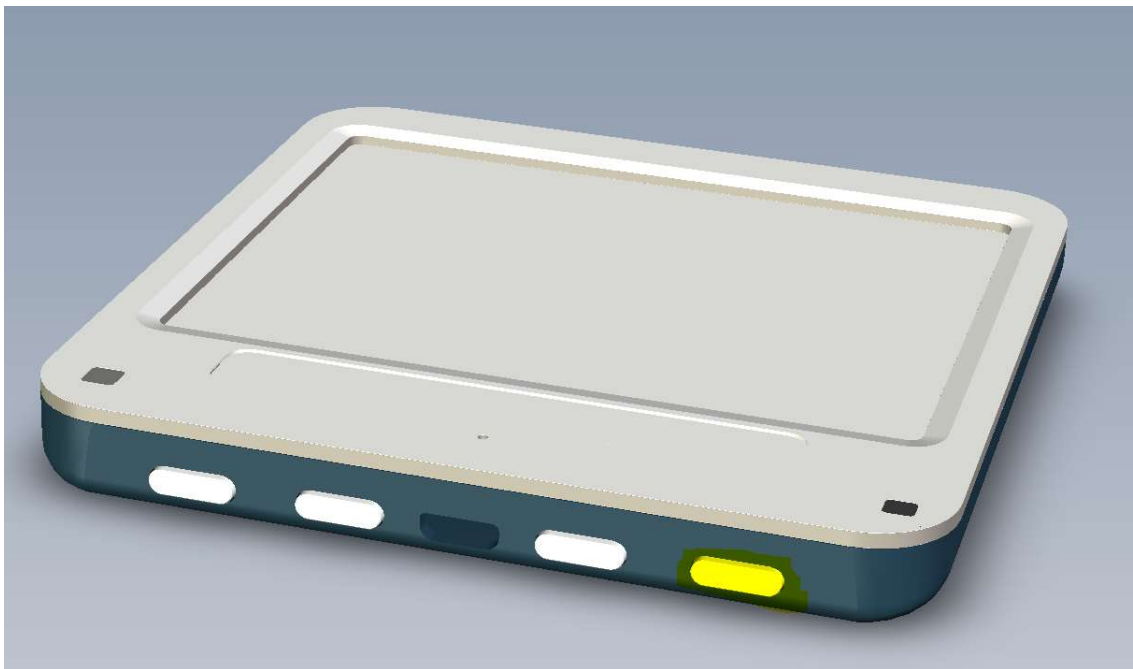
This device is battery-operated and can be charged using any standard micro-USB (**uUSB**) charging cable connected to a PC USB Port, or a transformer (wall wart) with a suitable current rating. It is **NOT** recommended to charge this device at currents of greater than 1A.

The Smart badge contains fixed antennas for Bluetooth, WIFI and 802.15.4 radio connectivity.

Further information about the detailed usage of this device can be obtained by contacting Proxfinity using the contact form at <https://www.proxfinity.com/> .

## 2.0 INSTALLATION & SETUP INSTRUCTIONS

To turn the badge ON, press the Rightmost button on the bottom face of the device.



Hold down this key for approximately 3 seconds and you should see display activity (Proxfinity Logo flash) indicating the badge has started up.

To turn the badge OFF, press the same button for 20 seconds and then release.

To check the battery status of the device in the OFF state, quickly tap the power button (<1 second). If you see a green LED flash in the lower right corner of the badge, there is sufficient charge to power-up the device. If not, the device should be charged.



For official provisioning and Event-related or Contract tracing usage details for a particular application, please contact your Proxfinity Sales representative, or fill out the contact form at <https://www.proxfinity.com/> for more information or support.



## 3.0 REGULATORY INFORMATION & NOTICE

### 3.1 §15.19 Label Interference Note for FCC Part 15

*This device complies with Part 15 of the FCC Rules and Industry Canada licence-exempt RSSs. Operation is subject to the following two conditions: **a) this device may not cause harmful interference, and b) this device must accept any interference received, including interference that may cause undesired operation.***

### 3.2 §15.21 Modifications Note

*Changes or modifications not expressly approved by Proxfinity, Inc., could void the user's authority to operate the equipment.*

### 3.3 §15.105 Class B Digital Device - Interference Note

*This equipment has been tested and found to comply with the limits for a Class B digital device, pursuant to part 15 of the FCC Rules. These limits are designed to provide reasonable protection against harmful interference in a residential installation. This equipment generates, uses and can radiate radio frequency energy and, if not installed and used in accordance with the instructions, may cause harmful interference to radio communications. However, there is no guarantee that interference will not occur in a particular installation. If this equipment does cause harmful interference to radio or television reception, which can be determined by turning the equipment off and on, the user is encouraged to try to correct the interference by one or more of the following measures:*

- ***Reorient or relocate the receiving antenna. Increase the separation between the equipment and receiver.***
- ***Connect the equipment into an outlet on a circuit different from that to which the receiver is connected.***
- ***Consult the dealer or an experienced radio/TV technician for help.***



## 4.0 RF EXPOSURE REQUIREMENTS

RF Exposure requirements for this device are met during normal wear conditions, assuming the badge is residing on-body, hanging from a lanyard, near the torso. The applicable SAR limits have been tested against, directly and have been measured within compliance.

This device cannot be installed in any other equipment without further testing for SAR and Part 15 compliance (*and therefore a change to the FCC's and IC's grant(s) of authorization for this device*) and is NOT considered a pre-certified module.

## 5.0 INDUSTRY CANADA (IC) STATEMENTS

This device contains license-exempt transmitter(s)/receiver(s) that comply with Innovation, Science and Economic Development Canada's licence-exempt RSS standard(s)]. Operation is subject to the following two conditions:

- (1) this device may not cause harmful interference, and
- (2) this device must accept any interference received, including interference that may cause undesired operation.

L'émetteur/récepteur exempt de licence contenu dans le présent appareil est conforme aux CNR d'Innovation, Sciences et Développement économique Canada applicables aux appareils radio exempts de licence. L'exploitation est autorisée aux deux conditions suivantes:

- (1) l'appareil ne doit pas produire de brouillage, et
- (2) l'appareil doit accepter tout brouillage radioélectrique subi, même si le brouillage est susceptible d'en compromettre le fonctionnement.

This equipment complies with IC radiation exposure limits set forth for an uncontrolled environment and meets RSS-102 of the IC radio frequency (RF) Exposure rules.

Cet équipement est conforme aux limites d'exposition aux rayonnements énoncées pour un environnement non contrôlé et respecte les règles d'exposition aux fréquences radioélectriques (RF) CNR-102 de l'IC.



## 6.0 REGULATORY IDENTIFICATION INFORMATION

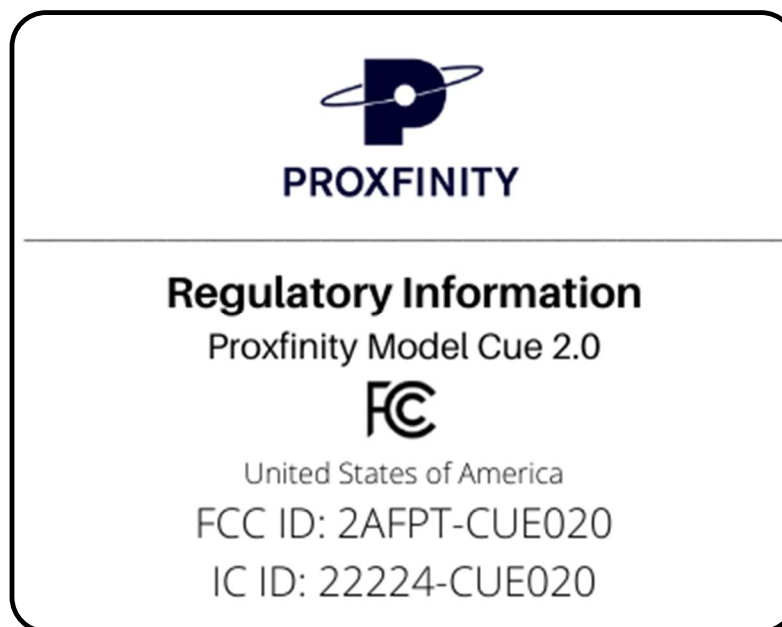
**MODEL: CUE 2.0**

**FCC ID: 2AFPT-CUE020**

**IC ID: 22224-CUE020**

## 7.0 REGULATORY INFORMATION ACCESS

The regulatory information provided in Section 6.0 is displayed by default at boot-up/power-up. It should remain on the screen for several seconds. A sample image showing the format and content that will be display, is below:



**The regulatory information can be accessed at any time by simply powering off the device and powering it back on. Power ON/OFF instructions are provided in Section 2.0 of this User Manual.**

For more information, please visit [www.proxfinity.com/manual](http://www.proxfinity.com/manual) to download the latest version of this user manual, as well as any other notices or updates regarding the device usage or feature set.