

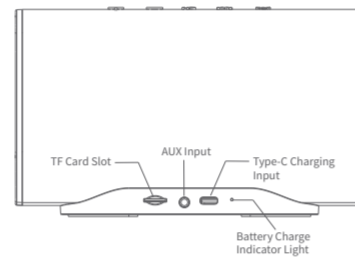
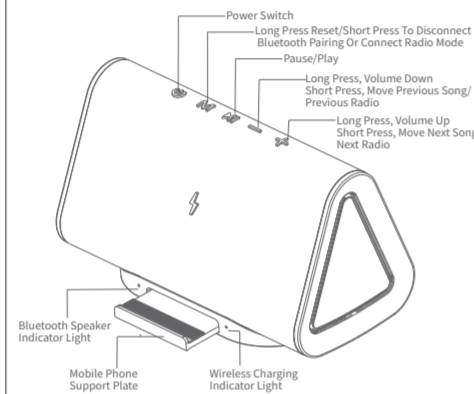
Product Model 产品型号	TB30	Brand 品牌	中性	Job No. 图档编码	
Product Type 产品类	无线充电器说明书	Description 描述	/	Revision 版本号	
Dimension 尺寸	85*65mm	Original Designer 原设计师		Date 日期	2020/3/5
Scale 比例	1:1	Technology 工艺	128g哑粉纸 双面四色印刷	Verifying 审核	/

Wireless Charging Bluetooth Speaker

User Manual

User Manual

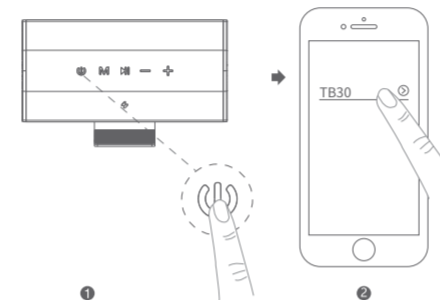
Thanks for using this product, this is a Wireless Charging Bluetooth Speaker, supporting Bluetooth stereo audio wireless transmission and control. It is also a smart phone wireless charger that can get rid of complex line connections and connection distance restrictions, allowing users to enjoy the high-quality music and digital products wireless charging unlimited fun. Please read this manual carefully and keep it properly for reference before using the wireless bluetooth speaker.



Specification

Bluetooth Specification	Bluetooth V 5.0
Power Supply	DC 5V 2A, DC 5V 1.67A
Output Power	5W, 5W, 10W
Rated Power of Bluetooth Speakers	5W*2
Built-in Battery Capacity	5000mAh
Signal To Noise Ratio	> 95dB
Distortion	< 0.5%
Wireless Charging	Qi standard 110-205KHZ Wireless Charging
Wireless Transmission Range	> 10M
Working Temperature	-3℃~+45℃

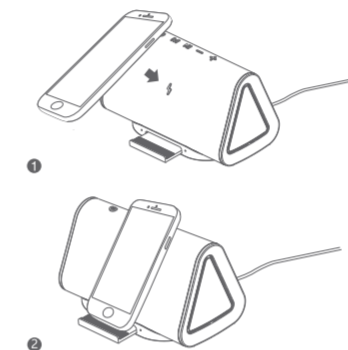
Bluetooth connection way



1. Long Press "Bluetooth" button until the Bluetooth speaker indicator light flashes green that it is turned on. The Bluetooth speaker will give a prompt sound, waiting for pairing.
2. Turn on the bluetooth function of music playback device and select "TB30" from the bluetooth menu of the device.
3. Click "Bluetooth" button once or turn on music on a bluetooth device that plays music.

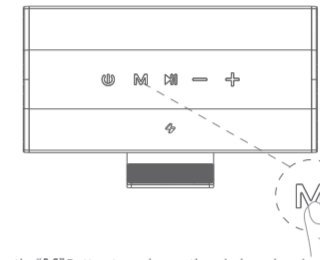
*Under bluetooth connection, long press "Bluetooth", the bluetooth speaker makes a "drip" sound, represent the bluetooth is disconnected and the green light flashes, waiting for the next pairing.
*Click "-" button for the previous song, long press is reduce the volume.
*Click "+" button for the next song, long press is increase volume.

Charge the phone wirelessly



1. Verify that the power indicator of the wireless charging bluetooth speaker is light and in the connected power state.
2. Place the phone with wireless charging function on the wireless charging bluetooth speaker anti-slip mat, the charging prompt light turns blue, find the correct charging position and start charging. When the charging light flashes alternately blue, it means that the mobile phone is not in the correct position. Please rearrange the mobile phone until the standby indicator lights only show blue. At this time, the wireless charging indicator will also be blue light.

Radio / TF card



1. Press the "Bluetooth" button to exchange the wireless charging Bluetooth speaker to the radio mode, long press to search for a radio station, and then select a channel by pressing the "-" and "+" keys.
2. Insert the TF card with the music files into the TF card slot on the back of the Wireless Charging Bluetooth speaker, press "Bluetooth". You can exchange the Wireless Charging Bluetooth speaker to radio mode, and then press the "-" key and "+" to adjust the volume with the previous / next song.

Working Instructions of Bluetooth speaker indicator light

Waiting for connection	Green light flashes.
Connected device	Light keeps green

Working Instructions of Battery Charging Indicator Light

Charging	light keeps red
Fully charged	light keeps green

Working Instructions of Wireless Charging Indicator Light

Power on	The wireless charging indicator light flashes green and blue alternately, 2 seconds later both blue and green lights on at the same time, then the green light on for standby.
Standby	Light keeps green
Charging	Light keeps blue
Fully charged	The light will turn to green when fully charged, except when charge iPhones. (The light will not turn to green when the iPhones fully charged.)
Error report	Blue light flashes.

FCC WARNING

This device complies with part 15 of the FCC Rules. Operation is subject to the following two conditions: (1) this device may not cause harmful interference, and (2) this device must accept any interference received, including interference that may cause undesired operation. Any changes or modifications not expressly approved by the party responsible for compliance could void the user's authority to operate the equipment.
NOTE: This equipment has been tested and found to comply with the limits for a Class B digital device, pursuant to Part 15 of the FCC Rules. These limits are designed to provide reasonable protection against harmful interference in a residential installation. This equipment generates, uses and can radiate radio frequency energy and, if not installed and used in accordance with the instructions, may cause harmful interference to radio communications. However, there is no guarantee that interference will not occur in a particular installation.
If this equipment does cause harmful interference to radio or television reception, which can be determined by turning the equipment off and on, the user is encouraged to try to correct the interference by one or more of the following measures:
-- Reorient or relocate the receiving antenna.
-- Increase the separation between the equipment and receiver.
-- Connect the equipment into an outlet on a circuit different from that to which the receiver is connected.
-- Consult the dealer or an experienced radio/TV technician for help.
To maintain compliance with FCC's RF Exposure guidelines, This equipment should be installed and operated with minimum distance between 20cm the radiator your body. Use only the supplied antenna.
FCC ID: 2A7P2TB30