

# 3 in 1 Wireless Charging Station User Manual

## Thanks for choosing us!

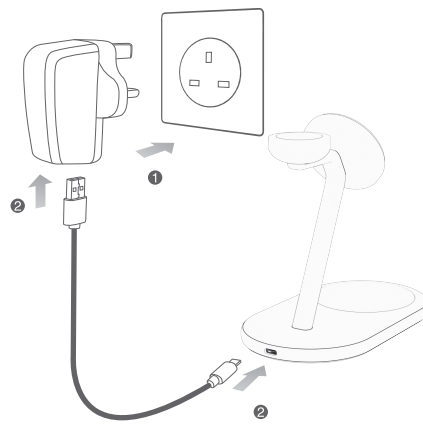
This product is a triad wireless charger, support iPhone12/13 series /Airpods/Apple Watch charging at the same time.  
Please kindly read the user manual before using and keep it for future reference.



## Specification

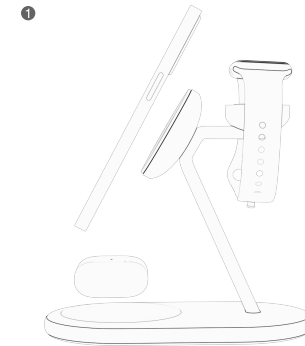
Input: DC5V,3A DC9V,3A DC12V,3A	Charging distance: ≤10mm
Output(Phone): 5W/7.5W/15W	Conversion: ≥72%
Output(Apple Watch): 3W	NW.: 315g
Output(Airpods): 5W	Dimensions: 80×136×108mm
Frequency: 115-205KHZ	
115-205KHZ(for Phone & Airpods)	
326.5KHZ(for Apple Watch)	

## Connect to Power Adapter



- ① Connect the power adapter to socket.
- ② Connect adapter to the Type-C interface.

## Charging Mode



- ① Make sure the wireless charger dock connect to the power supply.
- ② The smartphone/Airpods/Apple Watch don't placed on product corresponding charge position. Long bright, light blue, such as when a metal foreign body placed on the pad, indicator light blue lights flashing.

## FCC Warning

This device complies with part 15 of the FCC Rules. Operation is subject to the following two conditions: (1) This device may not cause harmful interference, and (2) this device must accept any interference received, including interference that may cause undesired operation. Any Changes or modifications not expressly approved by the party responsible for compliance could void the user's authority to operate the equipment.

This equipment has been tested and found to comply with the limits for a Class B digital device, pursuant to part 15 of the FCC Rules. These limits are designed to provide reasonable protection against harmful interference in a residential installation. This equipment generates uses and can radiate radio frequency energy and, if not installed and used in accordance with the instructions, may cause harmful interference to radio communications. However, there is no guarantee that interference will not occur in a particular installation. If this equipment does cause harmful interference to radio or television reception, which can be determined by turning the equipment off and on, the user is encouraged to try to correct the interference by one or more of the following measures:

- Reorient or relocate the receiving antenna.
- Increase the separation between the equipment and receiver.
- Connect the equipment into an outlet on a circuit different from that to which the receiver is connected.
- Consult the dealer or an experienced radio/TV technician for help.

## FCC RF exposure statement:

The equipment complies with FCC radiation exposure limits set forth for an uncontrolled environment. This equipment should be installed and operated with minimum distance between 20cm the radiator your body. FCC ID:2AFP2LM10

The involved images are sketch maps, the final product as per the material subjects.  
Includes: wireless charger, Power cable, user's manual.