

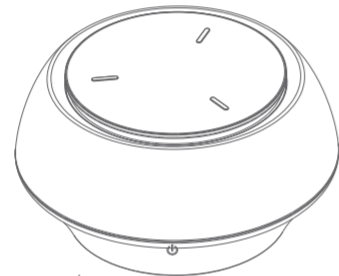
Product Model 产品型号	LC01	Brand 品牌	中性	Job No. 图档编码	
Product Type 产品类	无线充电器说明书	Description 描述	/	Revision 版本号	
Dimension 尺寸	85*65mm	Original Designer 原设计师		Date 日期	2020/8/25
Scale 比例	1:1	Technology 工艺	128g哑粉纸 双面四色印刷	Verifying 审核	/

无线充电小夜灯

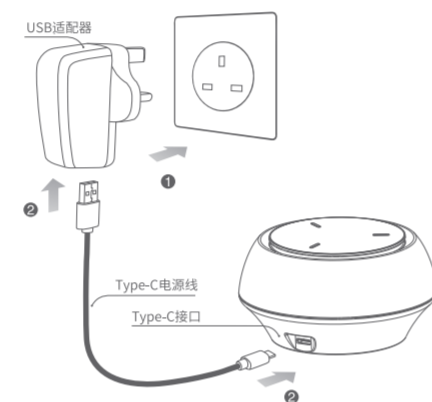
用户手册

用户手册

感谢使用本产品，本产品是一款无线充电器小夜灯，支持 LED 夜灯功能。同时也是一款智能手机无线充电器，它可以摆脱复杂的线路连接和连线距离的限制，使用户享受数码产品无线充电的无限乐趣。
在使用无线充电器小夜灯前，请认真阅读本手册并妥善保存，以备查阅。

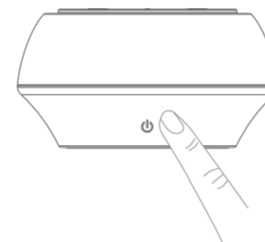


连接适配器



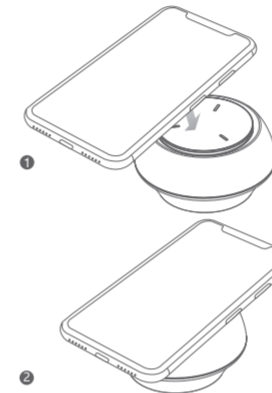
- ① 将电源适配器插在插座上。
 - ② Type-C电源线一端连接适配器，一端连接无线充电器小夜灯。
- 注：本产品同时兼容 Type-C 至 Type-C 电源线。只有 QC2.0 或者 QC3.0 标准的电源适配器才能支持本产品的快充功能。Type-C 至 Type-C 电源线和电源适配器需另外购买。

夜灯使用方法



- ① 轻触 键打开夜灯功能。
- ② 长按 键调整夜灯亮度。
- ③ 双击 键调整夜灯色温。

对手机进行无线充电



- ① 确认无线充电器连接电源，并处于待机状态。
- ② 将带有无线充电功能的手机正确放置在发射板上，开始充电。

规格参数

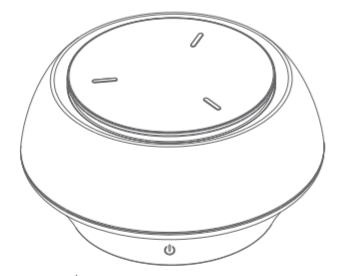
输入电压: DC5V,2A DC9V,1.8A DC12V,1.8A	接收距离: ≤10mm
输出功率: 5W/7.5W/10W/15W	电力转换: ≥72%
工作频率: 115-205KHz	产品重量: 107g
规格尺寸: φ99×10mm	LED功率: 最高3W

Night Light Wireless Charging Station

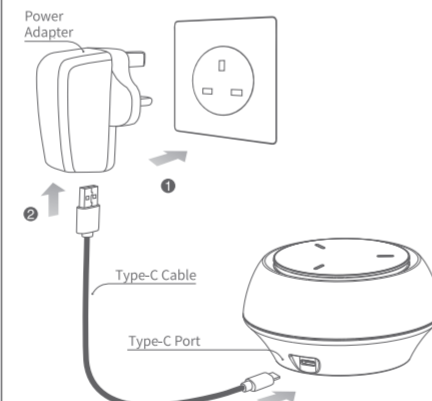
User Manual

User Manual

Thanks for using this product, this is a Night Light Wireless Charging Station, supporting Bluetooth stereo audio wireless transmission and control. It is also a smart phone wireless charger that can get rid of complex line connections and connection distance restrictions, allowing users to enjoy the digital products wireless charging unlimited fun.
Please read this manual carefully and keep it properly for reference before using the Night Light Wireless Charging Station.



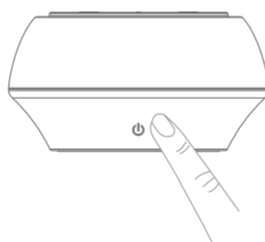
Connect to Power Adapter



- ① Connect the power adapter to socket.
- ② Connect adapter to the Type-C interface, the other Type-C to pad.

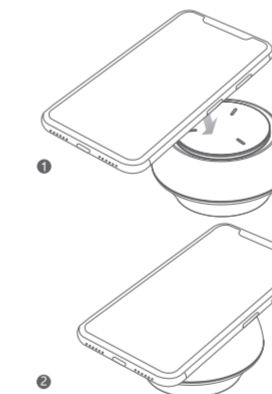
Note: this product works with Type-C to Type-C charging cable. Only QC 2.0 or QC3.0 standard power adapter support this product's quick charge function. You need to buy power adapter separately. Type-C to Type-C charging cable and power adapter need to buy separately.

Usage of night light



- ① Tap the to turn on the night light function.
- ② Press and hold the to adjust the night light brightness.
- ③ Double click the to adjust the night light color temperature.

Charge the phone wirelessly



- ① Make sure the wireless charger dock connect to the power supply.
- ② Put the Qi-enabled smart phone properly on the transmitter and starts recharging.

Specification

Input: DC5V,2A DC9V,1.8A DC12V,1.8A	Charging distance: ≤10mm
Output: 5W/7.5W/10W/15W	Conversion: ≥72%
Frequency: 115-205KHZ	NW: 107g
Dimensions: φ99×10mm	LED power: 3W MAX

FCC WARNING

This device complies with part 15 of the FCC Rules. Operation is subject to the following two conditions: (1) this device may not cause harmful interference, and (2) this device must accept any interference received, including interference that may cause undesired operation. Any changes or modifications not expressly approved by the party responsible for compliance could void the user's authority to operate the equipment.
NOTE: This equipment has been tested and found to comply with the limits for a Class B digital device, pursuant to Part 15 of the FCC Rules. These limits are designed to provide reasonable protection against harmful interference in a residential installation. This equipment generates, uses and can radiate radio frequency energy and, if not installed and used in accordance with the instructions, may cause harmful interference to radio communications. However, there is no guarantee that interference will not occur in a particular installation.
If this equipment does cause harmful interference to radio or television reception, which can be determined by turning the equipment off and on, the user is encouraged to try to correct the interference by one or more of the following measures:
-- Reorient or relocate the receiving antenna.
-- Increase the separation between the equipment and receiver.
-- Connect the equipment into an outlet on a circuit different from that to which the receiver is connected.
-- Consult the dealer or an experienced radio/TV technician for help.
To maintain compliance with FCC's RF Exposure guidelines, this equipment should be installed and operated with minimum distance between 20cm the radiator your body. Use only the supplied antenna.
FCC ID: 2A9P2-LC01