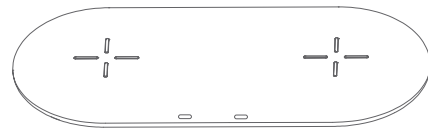


Dual Wireless Charger User Manual

Thanks for choosing us!

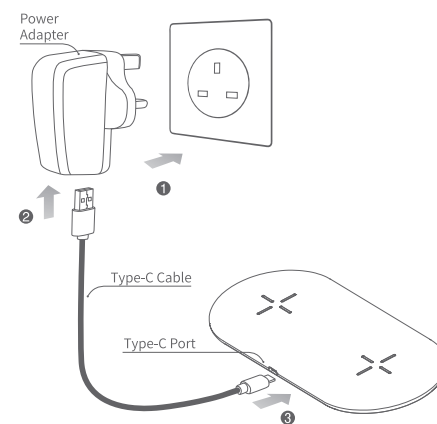
This is a smart phone wireless charger that allows you enjoy the fun of digital products easily.
Please kindly read the user manual before using and keep it for future reference.



Specification

Input: DC5V,3A DC9V,3A DC12V,2.5A	Charging distance: ≤10mm
Frequency: 110~205KHZ	Conversion: ≥72%
Dimensions: 200×90×10mm	NW.: 125g

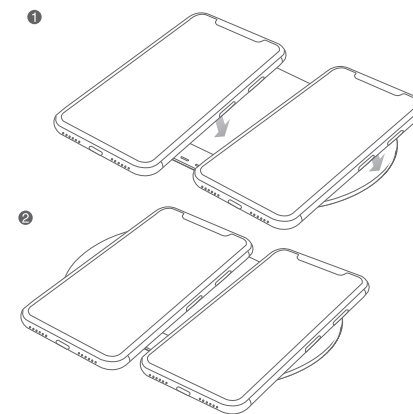
Connect to Power Adapter



- ① Connect the power adapter to socket.
- ② Connect adapter to the Type-C interface, the other Type-C to pad.
- ③ The standby indicator light is green.

Note: this product works with Type-C to Type-C charging cable. Only QC 2.0 or QC3.0 standard power adapter support this product's quick charge function. You need to buy power adapter separately. Type-C to Type-C charging cable and power adapter need to buy separately.

Charging Mode



- ① Make sure the wireless charger dock connect to the power supply.
- ② Put the Qi-enabled smart phone properly on the transmitter, the indicator light become blue and start charging. The device enter to standby mode when take away the phone from charging pad.

Note: When Samsung phones which are built-in wireless charging function get fully charged with this product, if don't move the phone in a long time, the battery power keeps in fully charged status (supplementary charge).

Notes

1. Do not squeeze or collisions.
2. Do not disassemble or throw into fire or water, to avoid causing a short circuit leakage.
3. Do not use wireless charger in severely hot, humid or corrosive environments, to avoid circuit damage and occurs leakage phenomenon.
4. Do not place too close with magnetic stripe or chip card (ID card, bank cards, etc.) to avoid magnetic failure.
5. Please keep the distance at least 20cm between implantable medical devices (pacemakers, implantable cochlear, etc.) and the wireless charger, to avoid potential interference with the medical device.
6. To take care of the children, to ensure that they won't play the wireless charger as a toy, to avoid unnecessary accidents.

FCC Statement
This device complies with part 15 and part 18 of the FCC Rules. Operation is Subject To the following two conditions:
(1) This device may not cause harmful interference, and (2) this device must accept any interference received, including interference that may cause undesired operation. Changes or modifications not explicitly approved by the party responsible for compliance could void the user's authority to operate this equipment.
Note: this equipment has been tested and found to comply with the limits for a Class B digital device, pursuant to part 15 and part 18 of the FCC Rules. These limits are designed to provide reasonable protection against harmful interference in a residential installation. This equipment generates, uses and radiates radio frequency energy and, if not installed and used in accordance with the instructions, may cause harmful interference to radio communications. However, there is no guarantee that interference will not occur in a particular installation. If this equipment does cause harmful interference to radio or television reception, which can be determined by turning the equipment off and on, the user is encouraged to try to correct the interference by one or more of the following measures:
• Reorient or relocate the receiving antenna.
• Increase the separation between the equipment and receiver.
• Connect the equipment into an outlet on a circuit different from that to which the receiver is connected.
• Consult the dealer or an experienced radio/TV technician for help.
The equipment complies with FCC radiation exposure limits set forth for an uncontrolled environment. During the operation of device a distance of 15 cm surrounding the device and 20 cm above the top surface of the device must be respected. This device complies with Part 18 of the FCC Rules. This equipment generates uses and can radiate radio frequency energy and, if not installed and used in accordance with the instructions, may cause harmful interference to radio communications. If this equipment does cause harmful interference to radio or television reception, which can be determined by turning the equipment off and on, the user is encouraged to try to correct the interference by one or more of the following measures:

The involved images are sketch maps, the final product as per the material subjects.
Includes: wireless charger, power cable, user's manual.