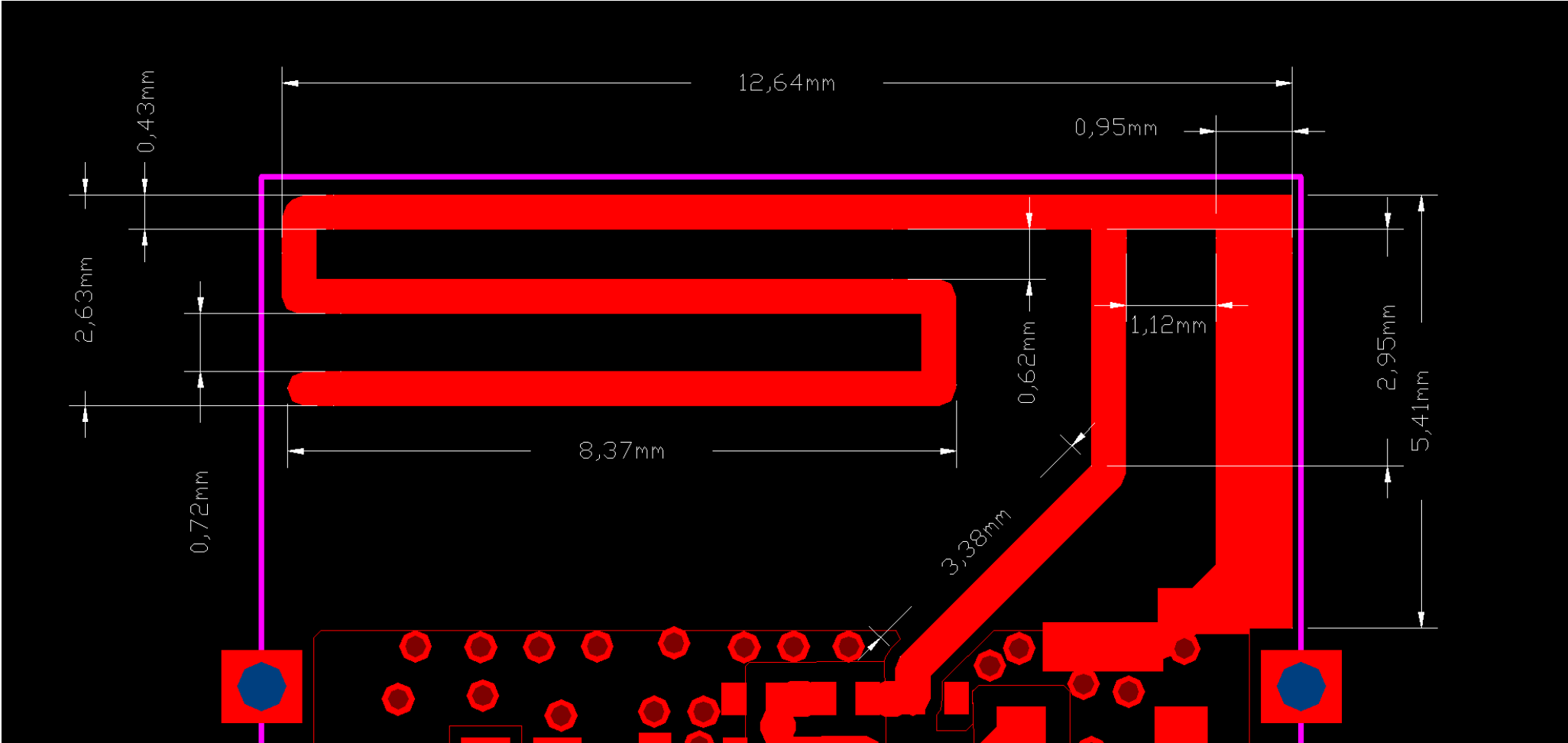


Antenna Specification

Antenna manufacturer: WIRELESS-TAG TECHNOLOGY CO LIMITED

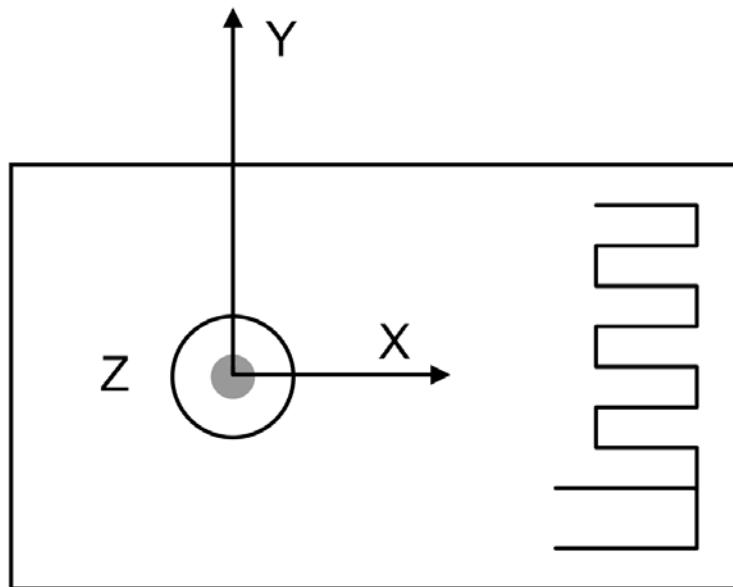
ITEM	SPEC
Antenna type	PCB Antenna(B)
Center Frequency	2400Mhz -2.12dBi 2450Mhz -0.89dBi 2500Mhz 0.42dBi
MAX GAIN	0.42dbi
Polarization	Horizontal
Azimuth Beam Pattern	Omni-directional
Impedance	50ohm
Antenna Length	36mm

Antenna Photo & Length(mm)

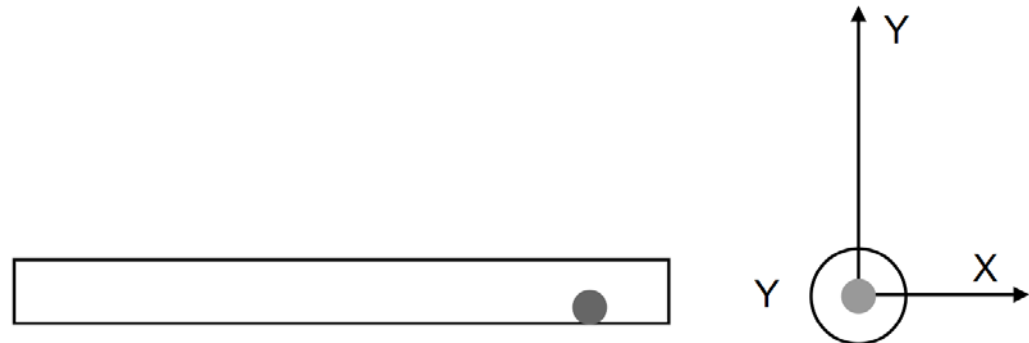


Coordinate System Reference: Antenna

Top view



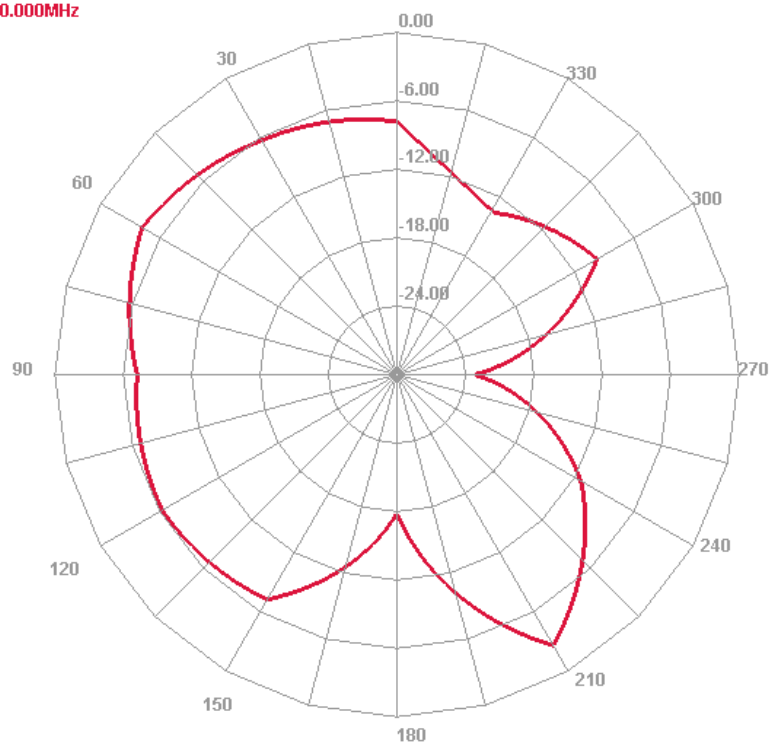
Side view



2D Radiation pattern f = 2410MHz

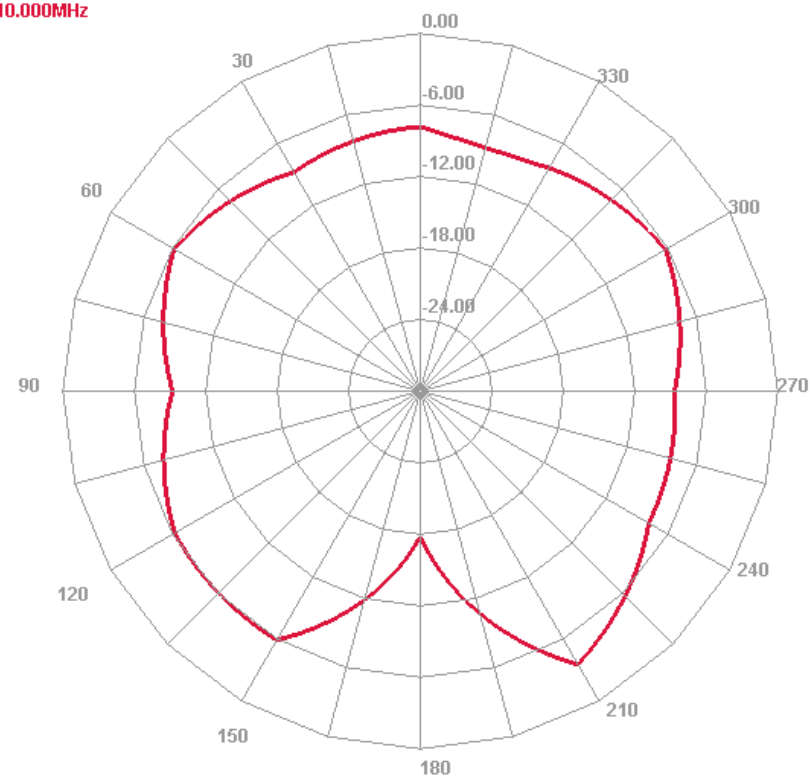
E1 Face

2410.000MHz



E2 Face

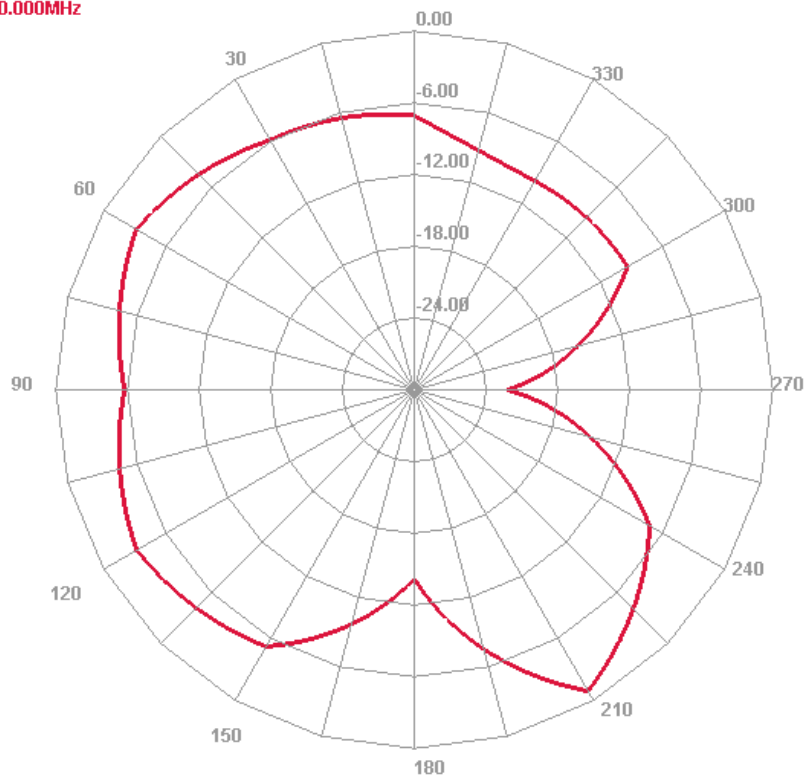
2410.000MHz



2D Radiation pattern f = 2440MHz

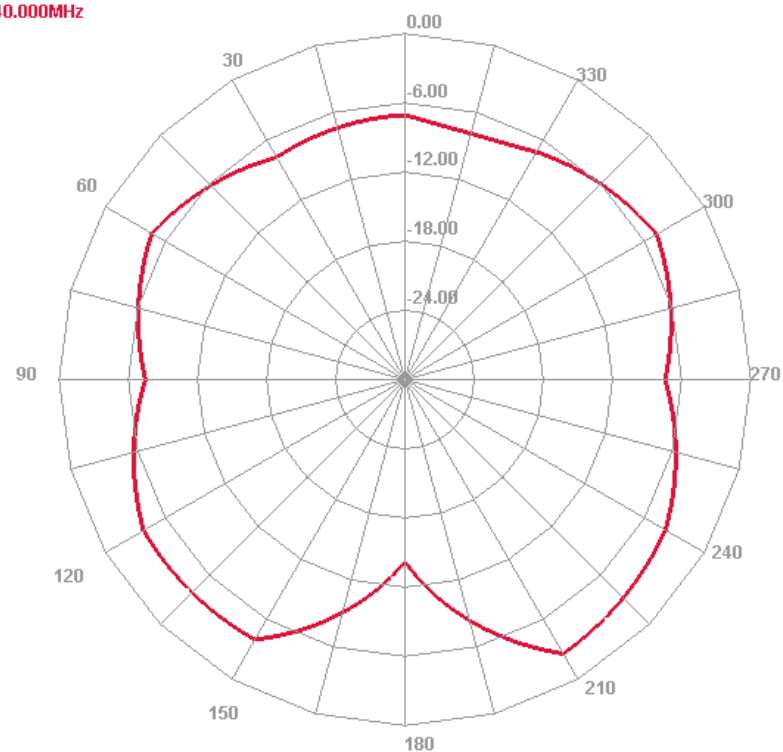
E1 Face

2440.000MHz



E2 Face

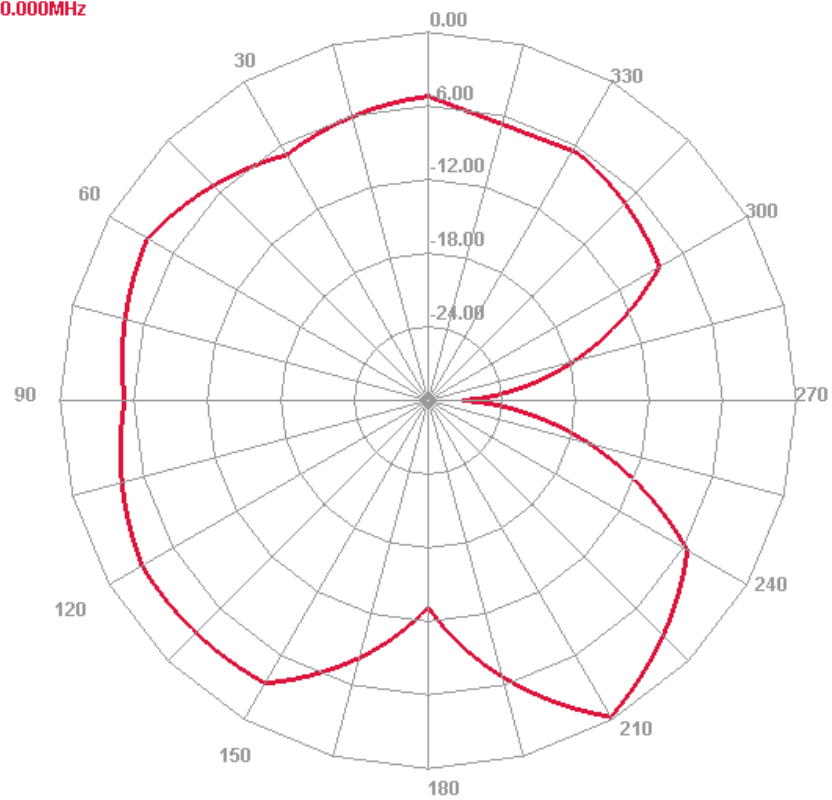
2440.000MHz



2D Radiation pattern f = 2480MHz

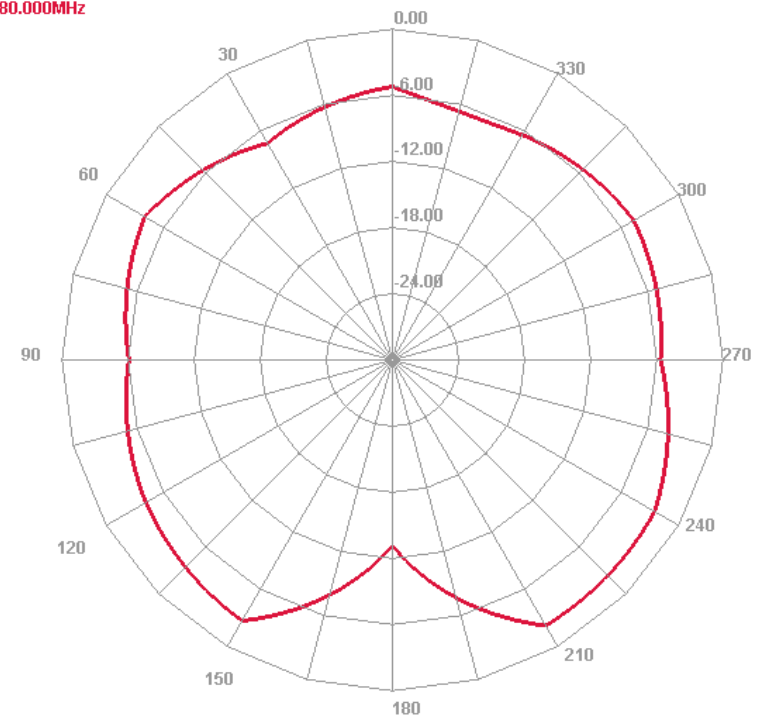
E1 Face

2480.000MHz

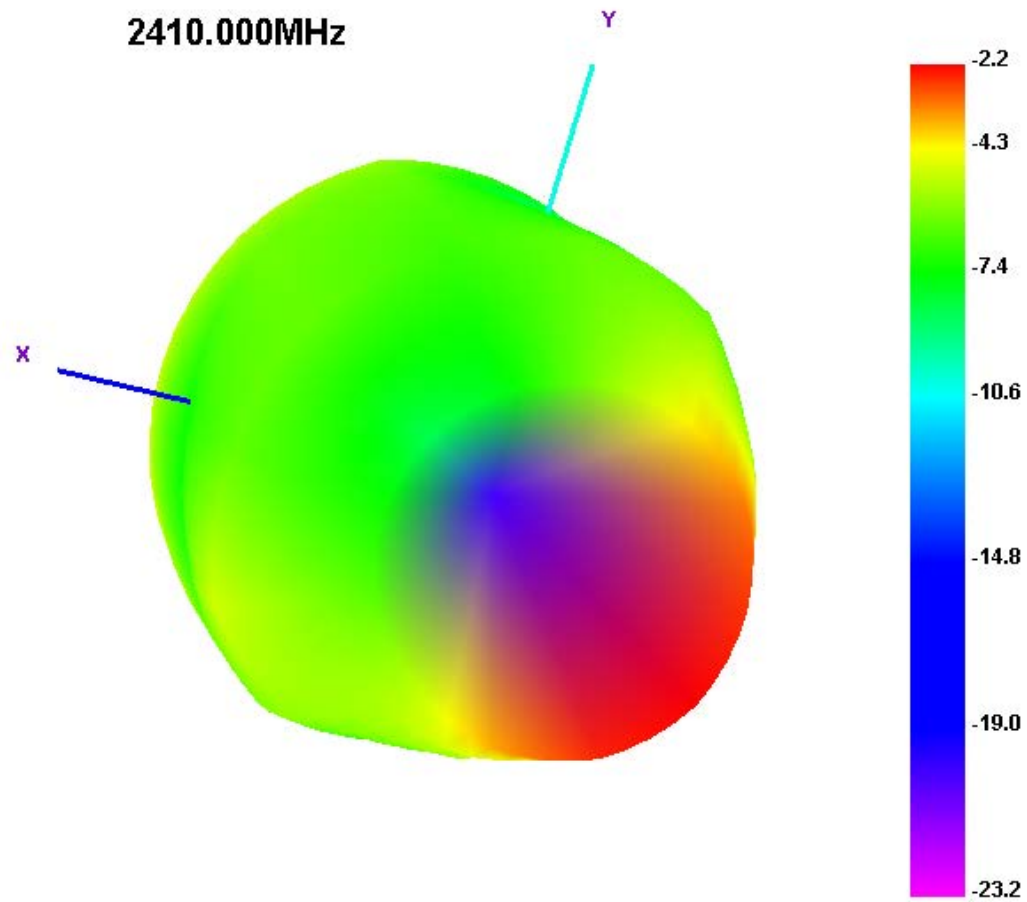


E2 Face

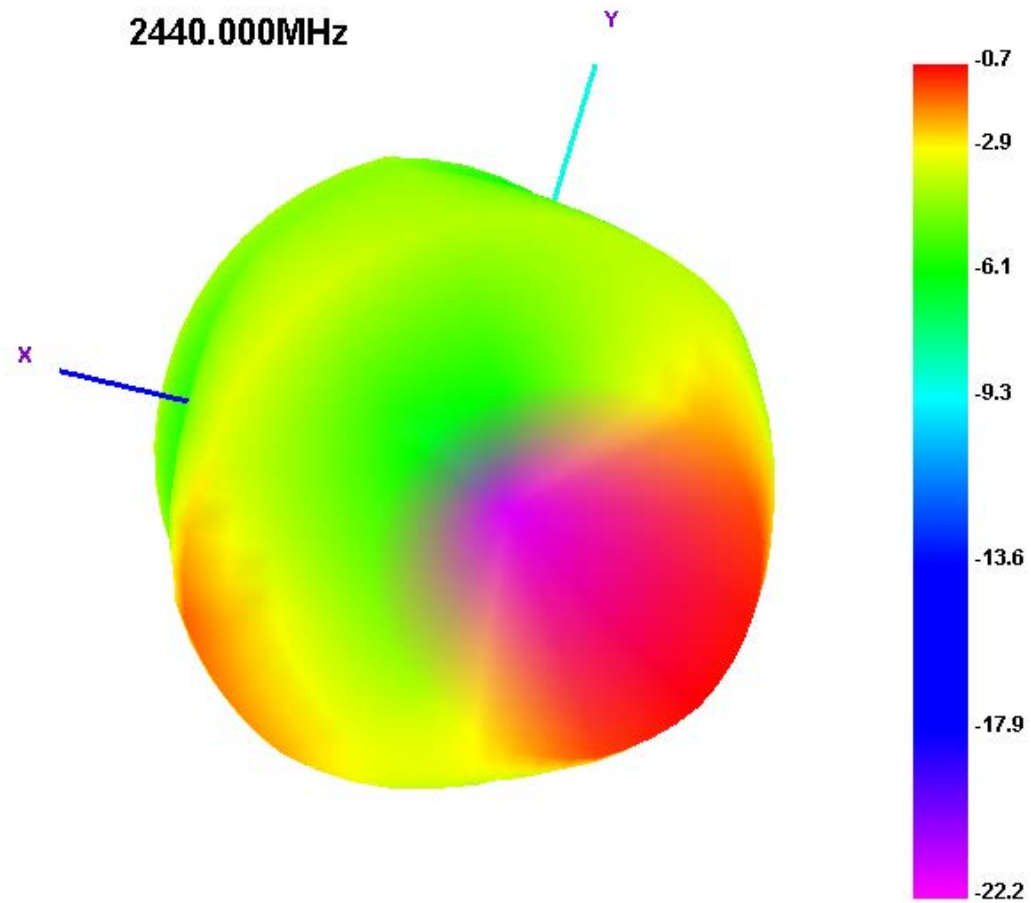
2480.000MHz



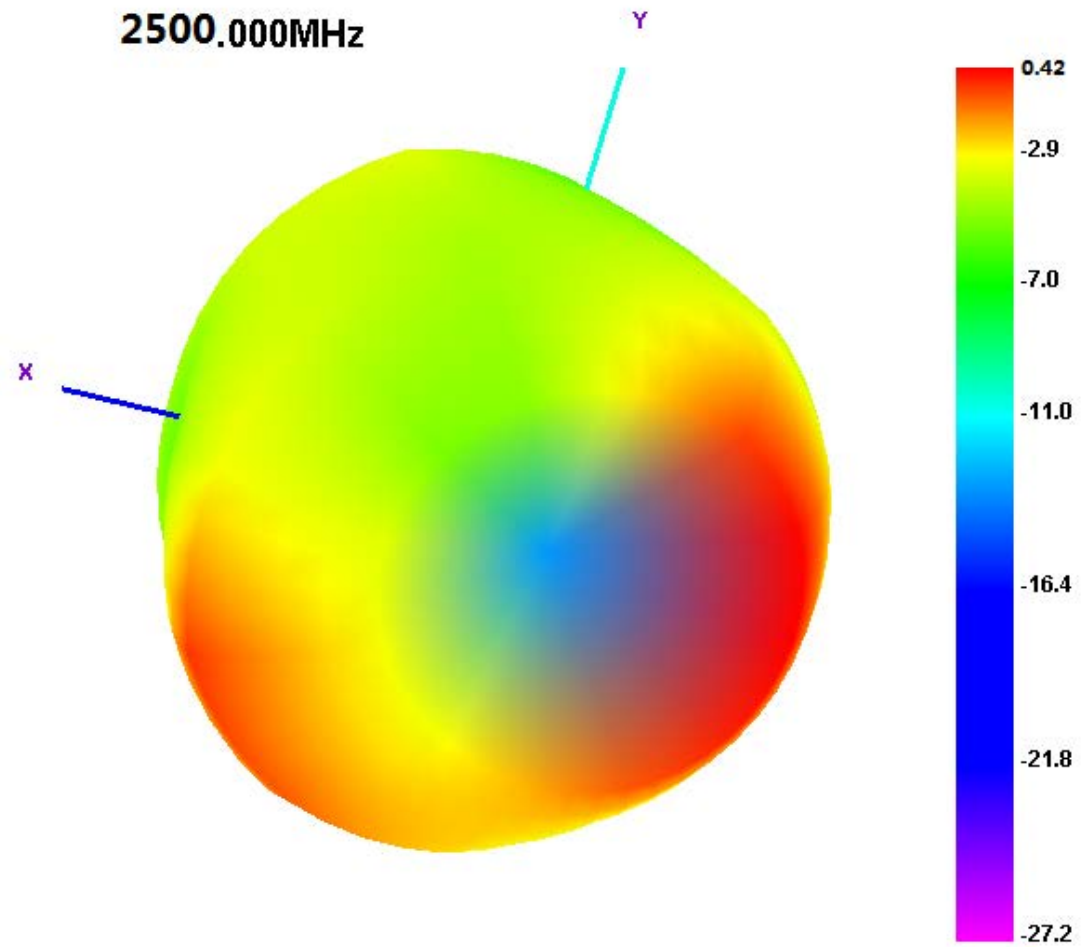
3D Radiation pattern f = 2410MHz



3D Radiation pattern $f = 2440\text{MHz}$



3D Radiation pattern f = 2500MHz



Measurements summary

Frequency(GHz)	Gain(dBi)	CP Gain(dBi)	CO Gain(dBi)	Efficiency(dB)	Efficiency(%)
2400	-2.12	--	--	--	20
2410	-2.17	--	--	--	19.91
2420	-1.7	--	--	--	23.15
2430	-1.08	--	--	--	27.4
2440	-0.74	--	--	--	30.24
2450	-0.89	--	--	--	29.98
2460	-0.42	--	--	--	33.77
2470	-0.73	--	--	--	31.49
2480	-0.24	--	--	--	34.69
2490	0.33	--	--	--	38.5
2500	0.42	--	--	--	40.13

Wireless-Tag Technology Co., Ltd

801, Block A, Building 6, Shenzhen International Innovation Valley, Dashi Road, Xili Community, Xili Street, Nanshan District, Shenzhen