

## Model Difference Letter

We, the undersigned hereby declare, that the following equipment:

**Product Name:** Shutoff Actuator of Cloud Building Management System

**Model:** CBM-SHAMAP-5-26

---

**Is electrically equal to:**

**Models:** CBM-SHAMAP-5-20, CBM-SHAMAP-5-21, CBM-SHAMAP-5-25

---

**Their Difference is:**

These are subset products of the product Shutoff Actuator, model CBM-SHAMAP-5-26. For each of these products some components were *removed because they are not required for the functionality of their specific application and to save cost (please relate to **Appendix A** for further details).*


All subset products are identical externally by using the same mechanics box which includes the changes described in Appendix A and Appendix B (please relate to Appendix B for further details).

---

**Point of Contact:**

YOKNEAM, 4/27/2024  
(place, date of issue)

OREN NIV, CTO  
(Name and title in block letters)

  
(Signature/stamp)

**Triple Plus Ltd.**  
514523281

## Appendix A

The 'Shutoff Actuator' is a smart device that can open and close valve following smart algorithm or by receiving open or close command from the controller. The actuator has two powered options: 1. 4x disposable batteries only. 2. Power plug as main power and the same 4x disposable batteries as backup.

The 'Shutoff Actuator' has an external communication connector that is connected to a Water flow meter or other 3<sup>rd</sup> party device.

The 'Shutoff Actuator' has subset products which are listed in this document. Each subset product has the same enclosure and the same electronic card as its superset products but for each subset product certain components are removed from the electronic card compared to the corresponding superset product. The components that are removed are not changing the radio functions. The reason for removing these components is to save the price for functions that are not required for certain applications.

### The following equipment:

Brand/Item	Type/Model	Short Product description
Shutoff Actuator – Full configuration	CBM-SHAMAP-5-26	Shutoff Actuator with Flow Meter and with power plug

is a **Superset** to the following equipment (including Software/Hardware version(s)):

Brand/Item	Type/Model	Short Product description
Shutoff Actuator	CBM-SHAMAP-5-20	Shutoff Actuator without Flow Meter and without power plug
Shutoff Actuator – AC power	CBM-SHAMAP-5-21	Shutoff Actuator without Flow Meter and with power plug
Shutoff Actuator – Flow Meter	CBM-SHAMAP-5-25	Shutoff Actuator with Flow Meter and without power plug

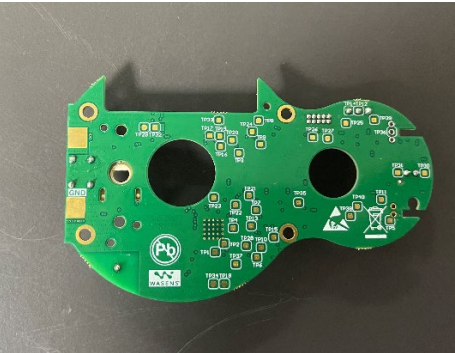
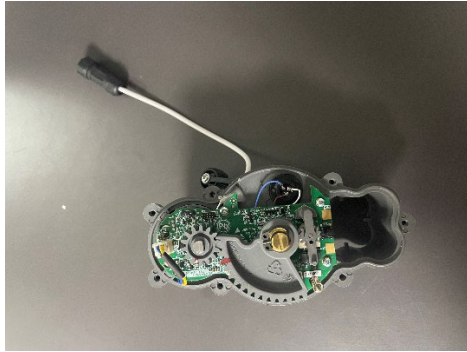
## Appendix B

Appendix B, provides external and internal photos of each HVIN (Model)

CBM-SHAMAP-5-26 – Shutoff Actuator full configuration.

Full assembly with all power plug option and external connector for flow meter or other 3<sup>rd</sup> party device.

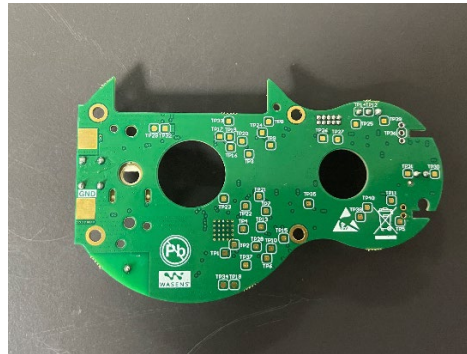
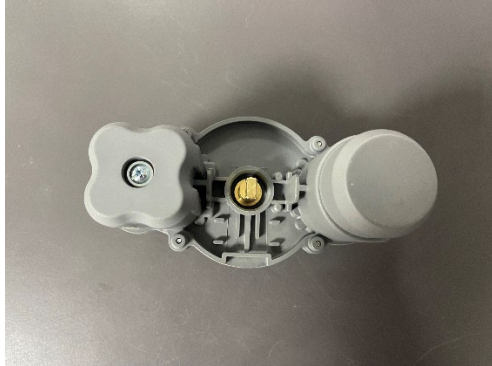
RF connectivity to controller with 915MHz radio.



CBM-SHAMAP-5-20 – Shutoff Actuator partial configuration.

Partial assembly without power plug and without external connector for flow meter or other 3<sup>rd</sup> party device.

RF connectivity to controller with 915MHz radio.

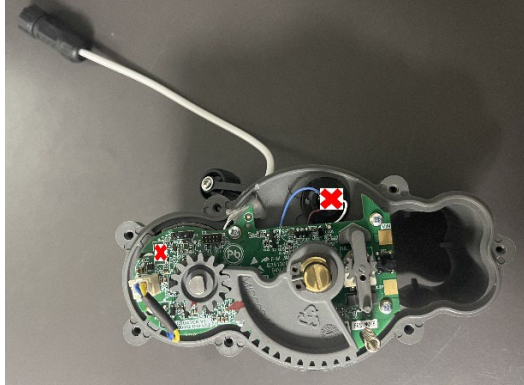




CBM-SHAMAP-5-21 – Shutoff Actuator partial configuration.

Partial assembly with power plug and without external connector for flow meter or other 3<sup>rd</sup> party device.

RF connectivity to controller with 915MHz radio.



CBM-SHAMAP-5-25 – Shutoff Actuator partial configuration.

Partial assembly without power plug and with external connector for flow meter or other 3<sup>rd</sup> party device.

RF connectivity to controller with 915MHz radio.

