

## Model Difference Letter

We, the undersigned hereby declare, that the following equipment:

**Product Name:** Controller

**Model:** CBM-COAMAP-5-01

---

**Is electrically equal to:**

**Models:** CBM-COAMAP-5-02, CBM-COAMAP-5-03, CBM-COAMAP-5-04, CBM-COAMAP-5-05, CBM-COAMAP-5-06, CBM-COAMAP-5-07, CBM-COAMAP-5-08

---

**Their Difference is:**

These are subset products of the product Controller, Model CBM-COAMAP-5-01 for each of these products some components were removed because they are not required for the functionality of their specific application and to save cost (please relate to **Appendix A** for further details).

All subset products are identical externally by using the same mechanics box which includes the changes described in Appendix A and Appendix B (please relate to Appendix B for further details).

---

**Point of Contact:**

YOKNEAM, 4/27/2024  
(place, date of issue)

OREN NIV, CTO  
(Name and title in block letters)

  
(Signature/stamp)

**Triple Plus Ltd.**  
514523281

## Appendix A

The Controller is a smart HUB that connect different kind of devices and controlling their operation, configuration and functionality, and update their status. The Controller itself connected to the cloud by Ethernet or cellular or WiFi connection and communicate with the end user by different Applications (WEB or Mobile) to operate and configure the system and its devices.

The controller has subset products which are listed in this document. Each subset product has the same enclosure and the same electronic card as its superset products but for each subset product certain components are removed from the electronic card compared to the corresponding superset product. The components that are removed are not changing the radio functions. The reason for removing these components is to save the price for functions that are not required for certain applications.

### The following equipment:

Brand/Item	Type/Model	Short Product description
Controller – Full configuration	CBM-COAMAP-5-01	WiFi, Eth, PoE, LTE-M3, Terminal ports, Rechargeable Battery

is a **Superset** to the following equipment (including Software/Hardware version(s)):

Brand/Item	Type/Model	Short Product description
Controller – partial configuration	CBM-COAMAP-5-02	WiFi, Eth, PoE, AA Battery
Controller – partial configuration	CBM-COAMAP-5-03	WiFi, Eth, PoE, Rechargeable Battery
Controller – partial configuration	CBM-COAMAP-5-04	WiFi, Eth, Rechargeable Battery
Controller – partial configuration	CBM-COAMAP-5-05	WiFi Only, Rechargeable Battery
Controller – partial configuration	CBM-COAMAP-5-06	Full configuration (WiFi, Eth, PoE, LTE(M3), AA Battery
Controller – partial configuration	CBM-COAMAP-5-07	WiFi, Eth, AA Battery
Controller – partial configuration	CBM-COAMAP-5-08	WiFi Only, AA Battery

## Appendix B

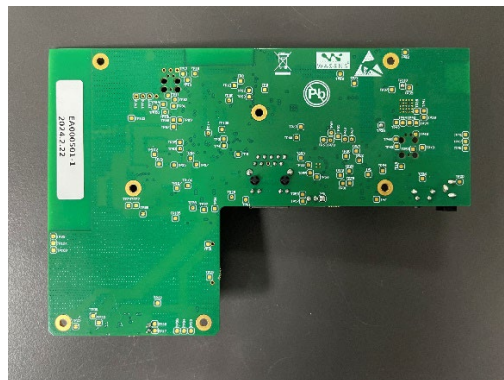
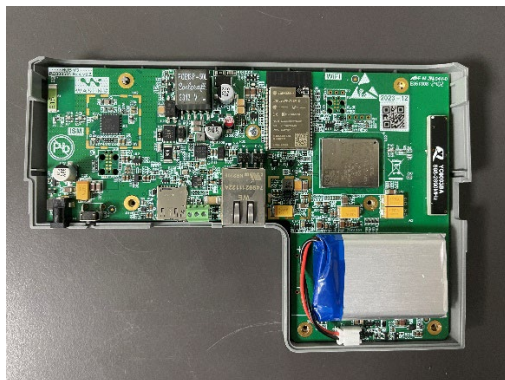
Appendix B, provides external and internal photos of each HVIN (Model)

CBM-COAMAP-5-01 – Controller, full configuration.

Full assembly with all Backhaul connectivity capabilities – Ethernet, WiFi, Cellular.

Power capability – power plug, power over Ethernet, Rechargeable battery and charger.

RF connectivity to devices with 915MHz radio.



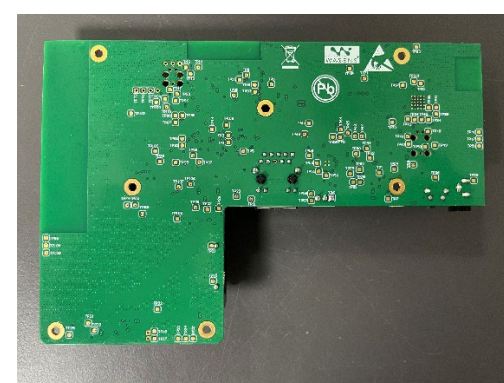
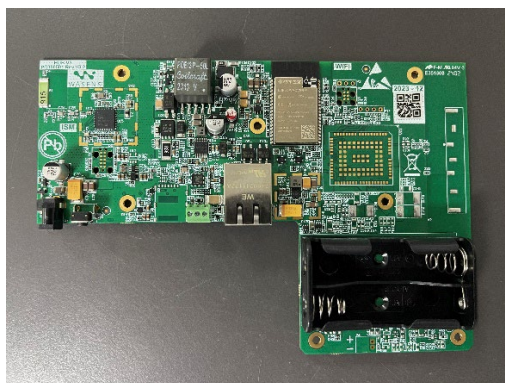
CBM-COAMAP-5-02:

Controller, partial configuration.

Backhaul connectivity capabilities – Ethernet and WiFi only.

Power capabilities – power plug, power over Ethernet, 2x AA batteries.

RF connectivity to devices with 915MHz radio.





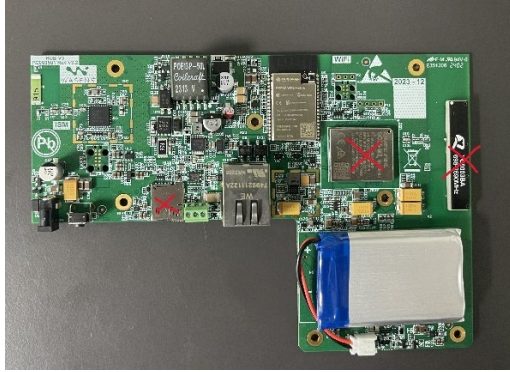
## CBM-COAMAP-5-03:

Controller, partial configuration.

Backhaul connectivity capabilities – Ethernet and WiFi only.

Power capabilities – power plug, power over Ethernet, Rechargeable battery + charger.

RF connectivity to devices with 915MHz radio.



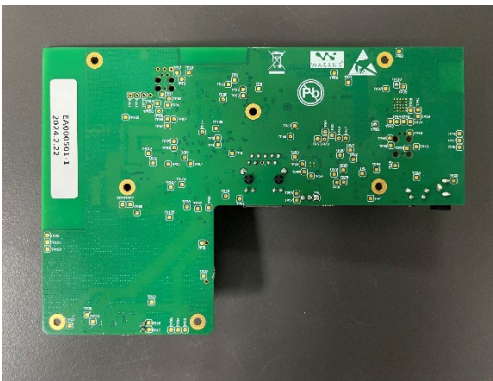
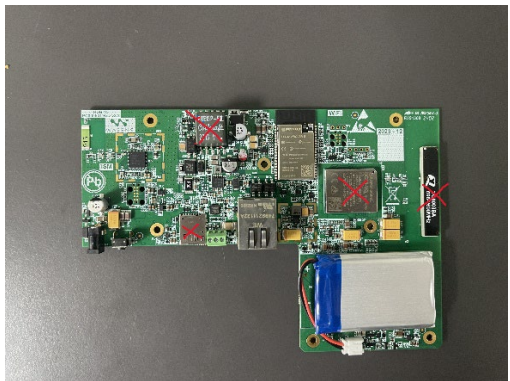
## CBM-COAMAP-5-04:

Controller, partial configuration.

Backhaul connectivity capabilities – Ethernet and WiFi only.

Power capabilities – power plug, Rechargeable battery + charger.

RF connectivity to devices with 915MHz radio.



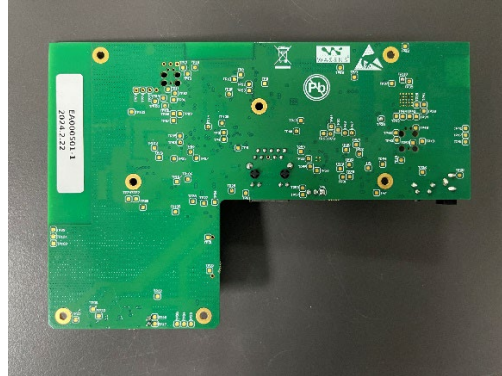
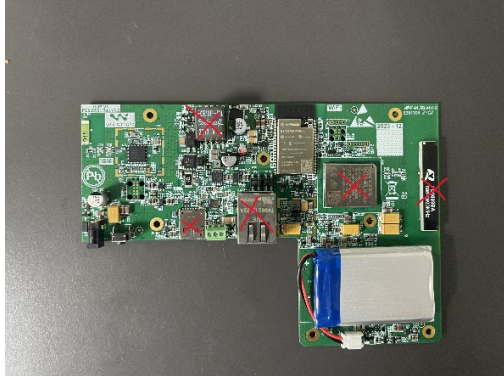
## CBM-COAMAP-5-05:

Controller, partial configuration.

Backhaul connectivity capabilities – WiFi only.

Power capabilities – power plug, Rechargeable battery + charger.

RF connectivity to devices with 915MHz radio.



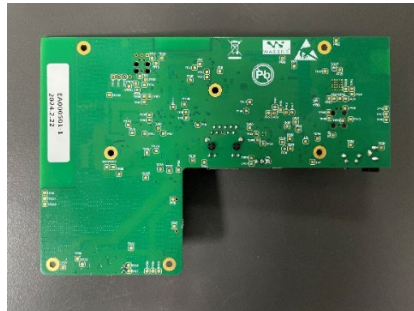
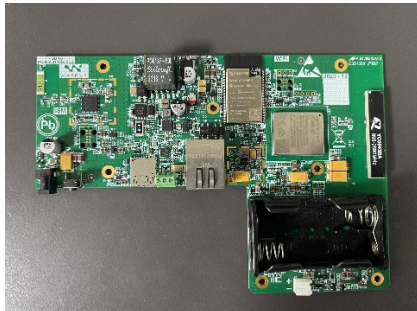
## CBM-COAMAP-5-06:

Controller, full configuration with AA batteries.

Backhaul connectivity capabilities – Ethernet, WiFi, Cellular.

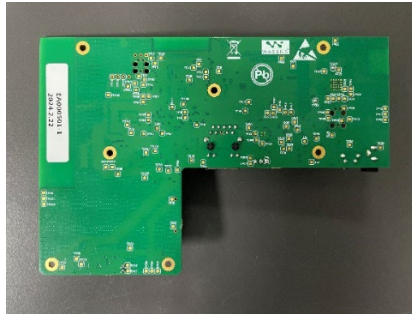
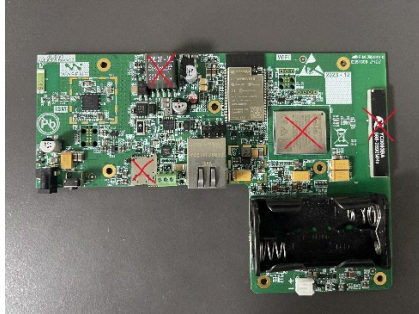
Power capabilities – power plug, Power over Ethernet, 2x AA battery.

RF connectivity to devices with 915MHz radio.



## CBM-COAMAP-5-07:

Controller, partial configuration with AA batteries.  
 Backhaul connectivity capabilities – Ethernet and WiFi.  
 Power capabilities – power plug, 2x AA battery.  
 RF connectivity to devices with 915MHz radio.



## CBM-COAMAP-5-08:

Controller, partial configuration with AA batteries.  
 Backhaul connectivity capabilities – WiFi only.  
 Power capabilities – power plug, 2x AA battery.  
 RF connectivity to devices with 915MHz radio.

