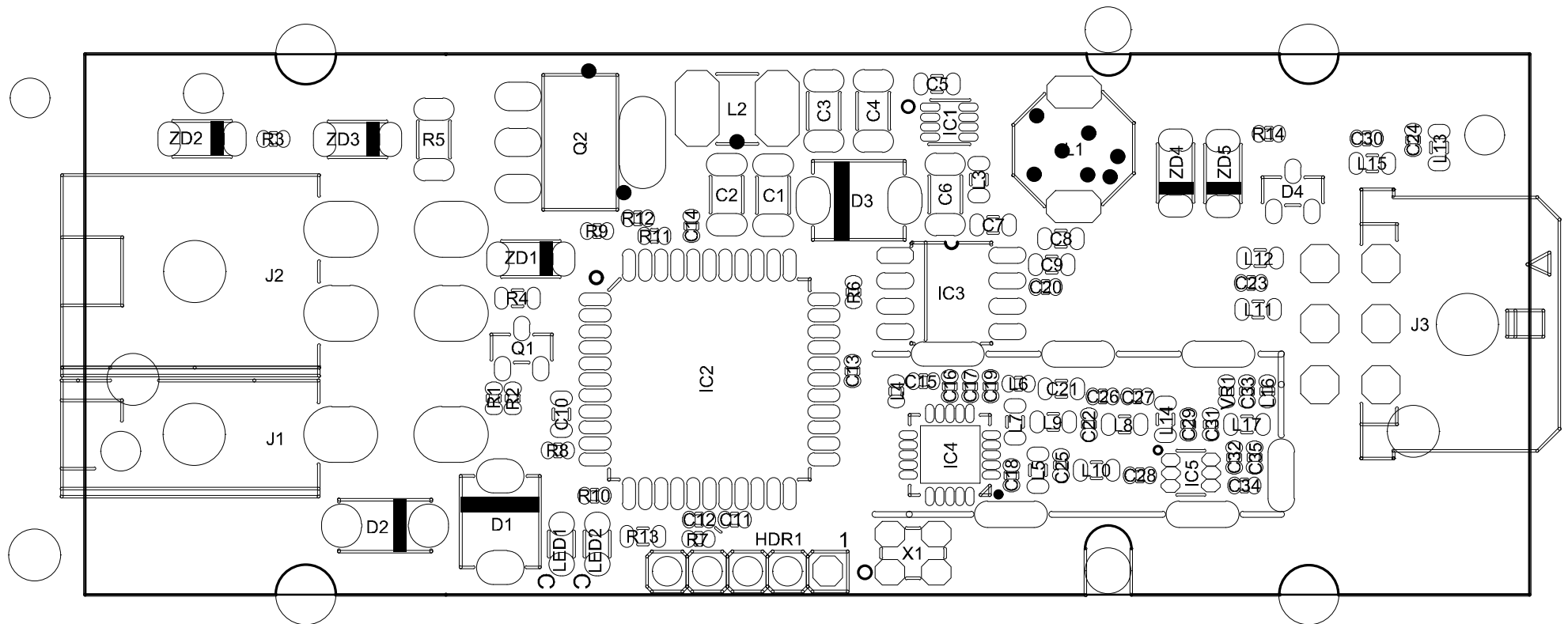


| VER | CHANGE NOTES:   |
|-----|---|
| 1A  | 22/06/2015<br>Capture in Altium Designer  |
| 1B  | 01/07/2015<br>Change value of C23 to 27pF<br>Change value of C22 to 4p7<br>Change value of C1 to 2u2 100V<br>Change value of L1 to 33uH<br>Change R13 footprint from 0402 to 0603<br>Change R5 footprint from 0402 to 1206 and value to 56R<br>Add test points on all pins of J4 and J5 |
| 1C  | 21/07/2015<br>Change IC3 to SOA0193<br>Change Crystal to SXA0021  |
| 1D  | 21/08/2015<br>Change C33 to SCC0009<br>Change C35 to SCC0138  |
| 2A  | 18/11/2015<br>NEW PCB LAY-OUT   |

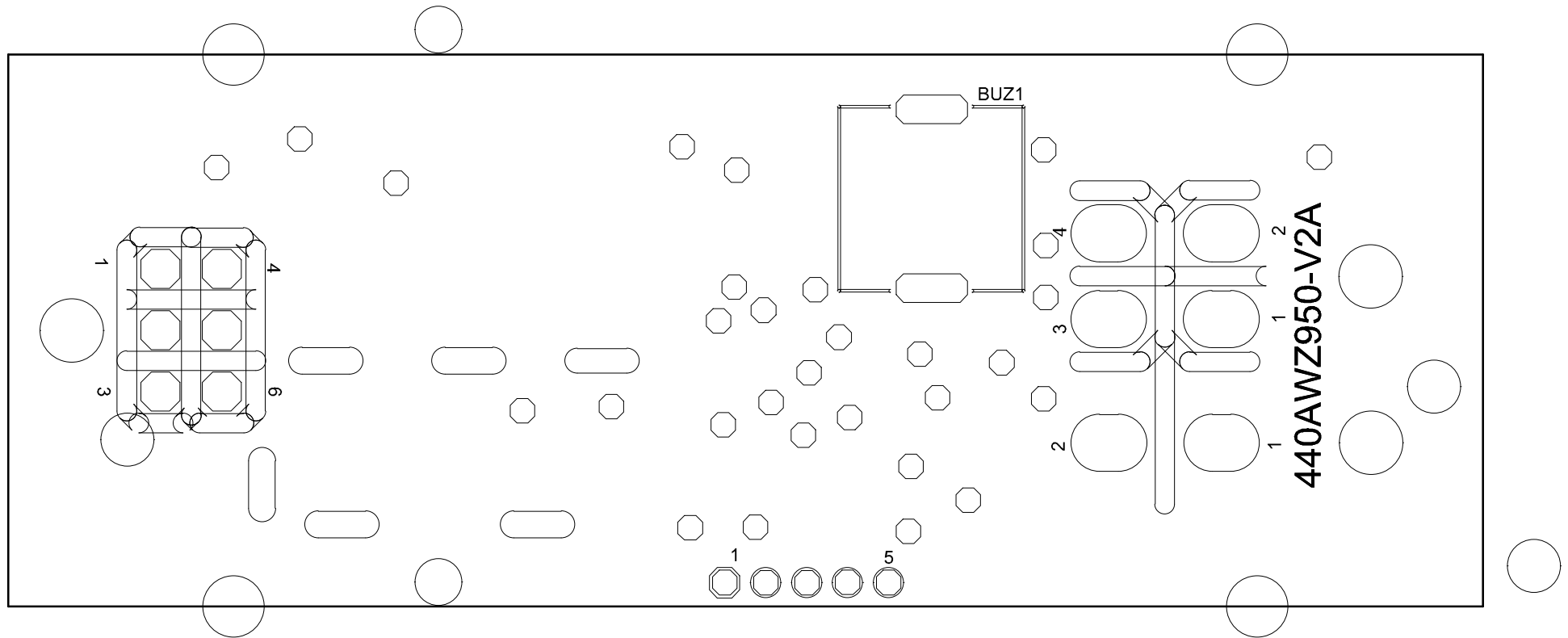


|               |            |                  |               |         |   |       |      |   |
|---------------|------------|------------------|---------------|---------|---|-------|------|---|
| Drawn by      | K. Douglas | PCB Number       | 440AWZ950-V2A | Issue # | 1 | X     | 5    | MODULE : Magix Pico Base Station PCB Sub-Assembly |
| Project. ENG. | S.Dawes    | Part List number | 440FLZ950-V6A |         | 2 |       | 6    |   |
|               |            | ECN #            |               |         | 3 |       | 7    |   |
| Approved by   |            |                  |               |         | 4 |       | 8    | TITLE : Magix Pico Base Station PCB Sub-Assembly  |
| TIME          | 18:49      | PRINT TIME       | 11:54:57      |         |   |       |      |   |
| DATE          | 12-11-2015 | PRINT DATE       | 2015/11/18    |         | 1 | SHEET | OF 1 | DRAWING NUMBER: 440CDZ950 REV. 2A                 |

TITLE: MAGIX PICO BASE STATION - PCB SUB-ASSEMBLY - TOP OVERLAY  
DRAWING NUMBER: 440STZ950-V2A  
DATE: 2015/11/14



TITLE: MAGIX PICO BASE STATION - PCB SUB-ASSEMBLY - BOTTOM OVERLAY  
DRAWING NUMBER: 440SBZ950-V2A  
DATE: 2015/11/14



TITLE: MAGIX PICO BASE STATION - PCB SUB-ASSEMBLY - TEST POINT OVERLAY  
DRAWING NUMBER: 440ADZ950A-V2A  
DATE: 2015/11/14

