



Figure 1: View of MiX 45MC-4G/MiX 45MC-4G-B with Front Panel Removed



Figure 2: View of MiX 45MC-4G with Rear Panel Removed



Figure 3: View of MiX 45MC-4G-B with Rear Panel Removed (backup battery inserted)



Figure 4: View of Main PCB on Carrier (top view)

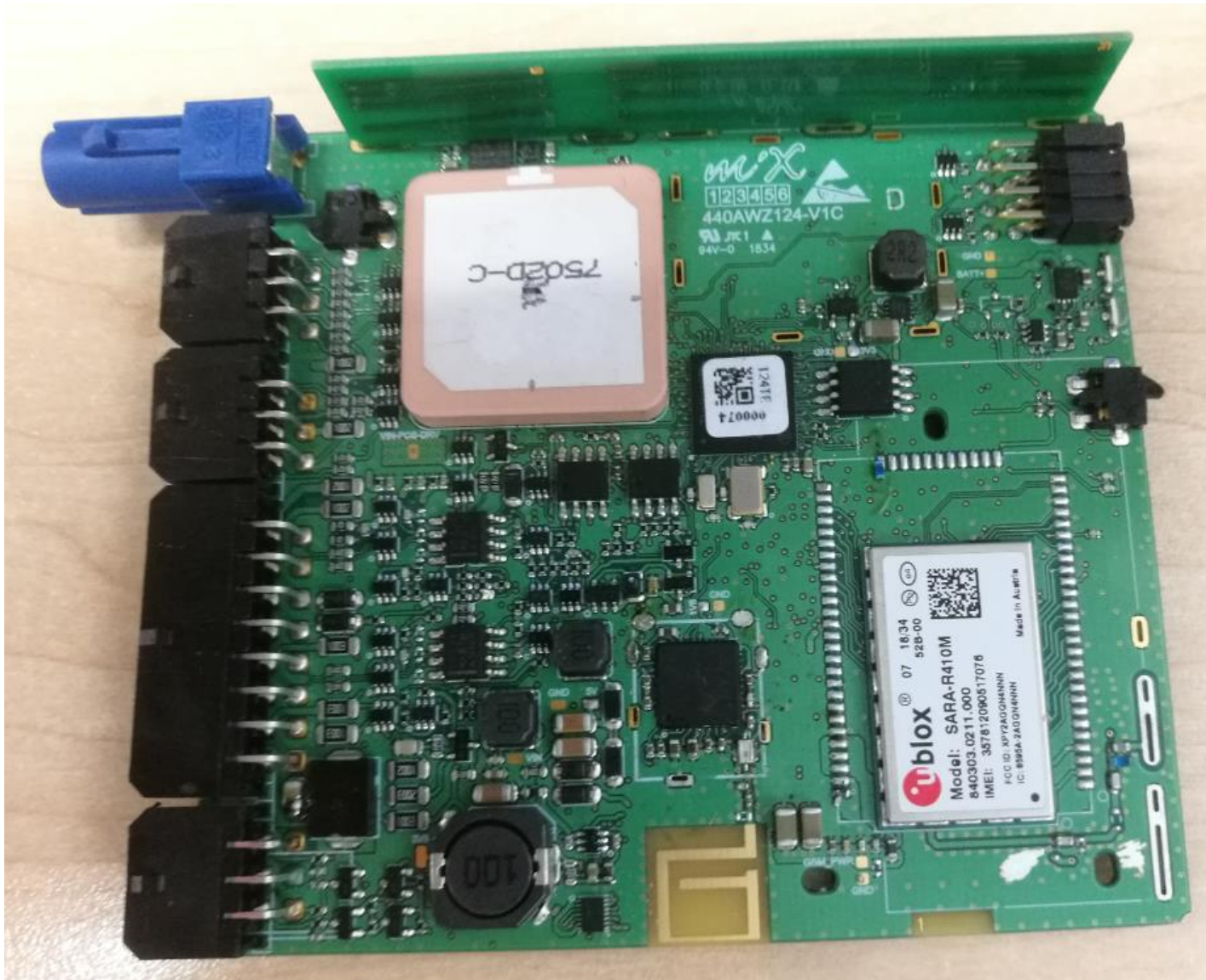


Figure 5: View of Main PCB on Carrier (top view) (without shields)



Figure 6: Bottom Side of Main PCB on Carrier – battery NOT fitted (MiX 45MC-4G)



Figure 6: Bottom Side of Main PCB on Carrier with battery fitted (MiX 45MC-4G-B)



Figure 7 a: Bottom Side of Main PCB

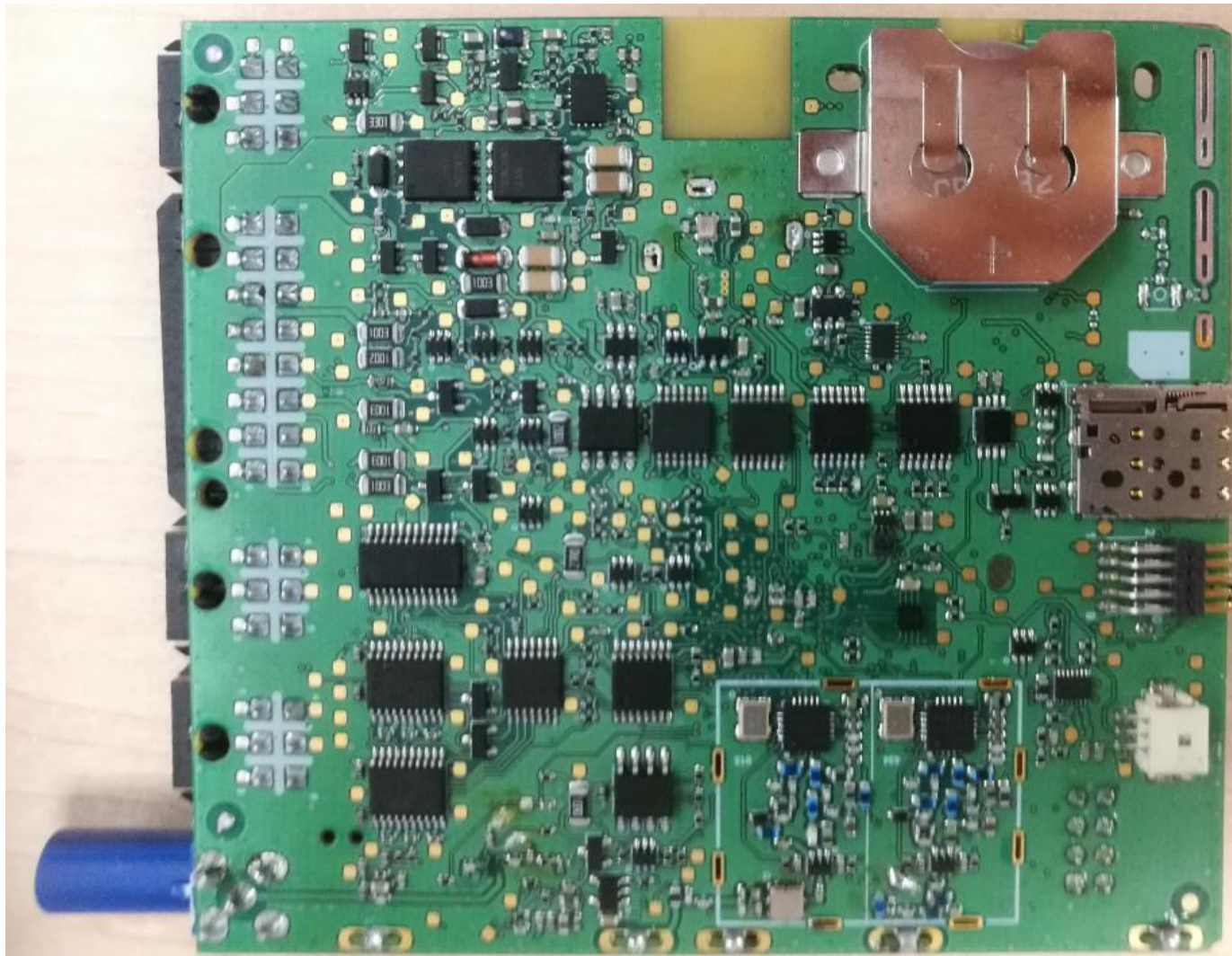


Figure 7 b: Bottom side of Main PCB without RF Shields



Figure 8: Side View of Main PCB showing 434 & 915 MHz Antenna

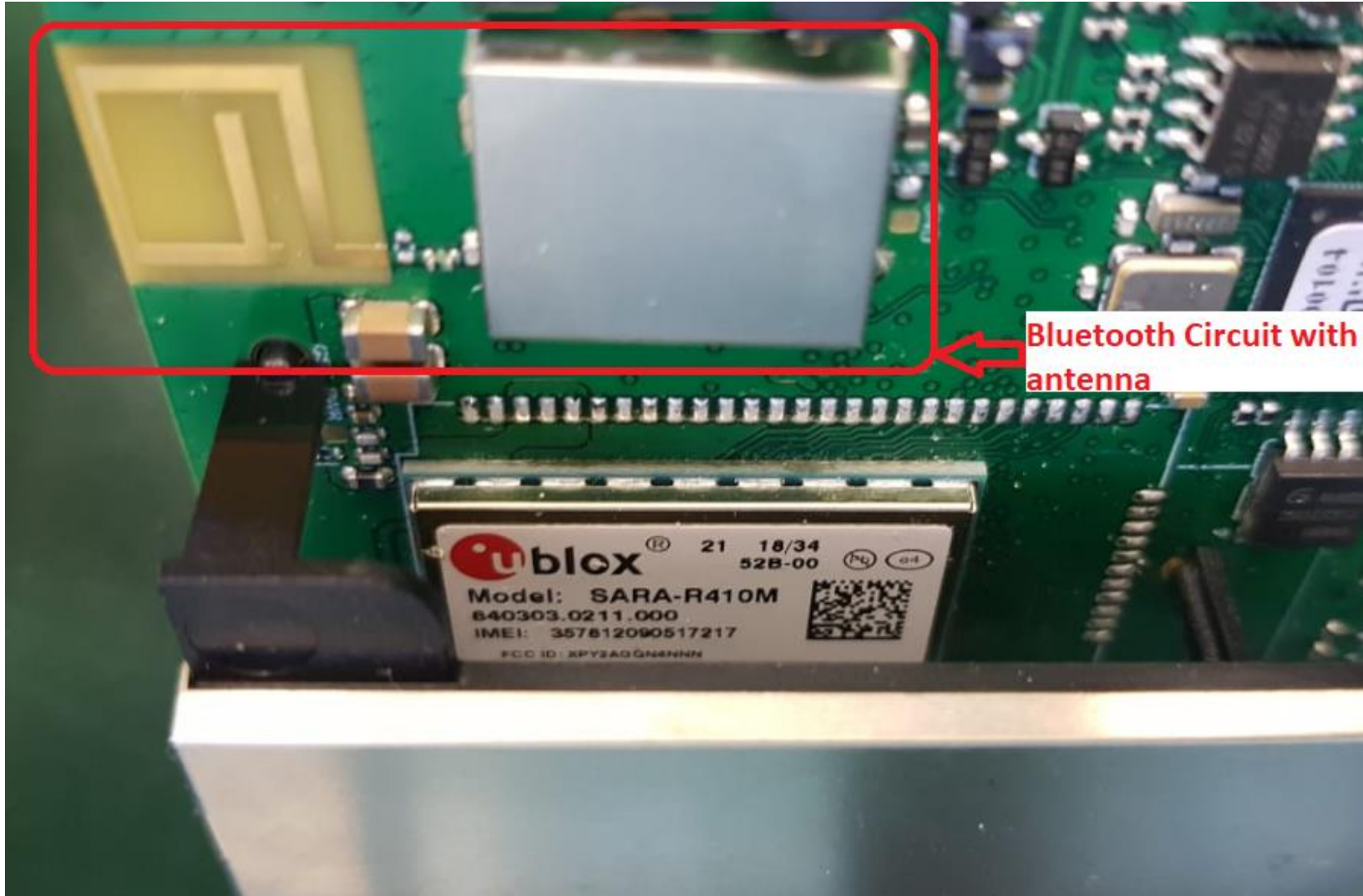


Figure 9: View of Bluetooth Antenna on Main PCB



Figure 10: View of Modem plus Antenna on Main PCB