



**Figure 1: View of MiX 44MC-3G/MiX 44MC-3G-B with Front Panel Removed**



Figure 2: View of MiX 44MC-3G with Rear Panel Removed



**Figure 3: View of MiX 44MC-3G-B with Rear Panel Removed (backup battery inserted)**

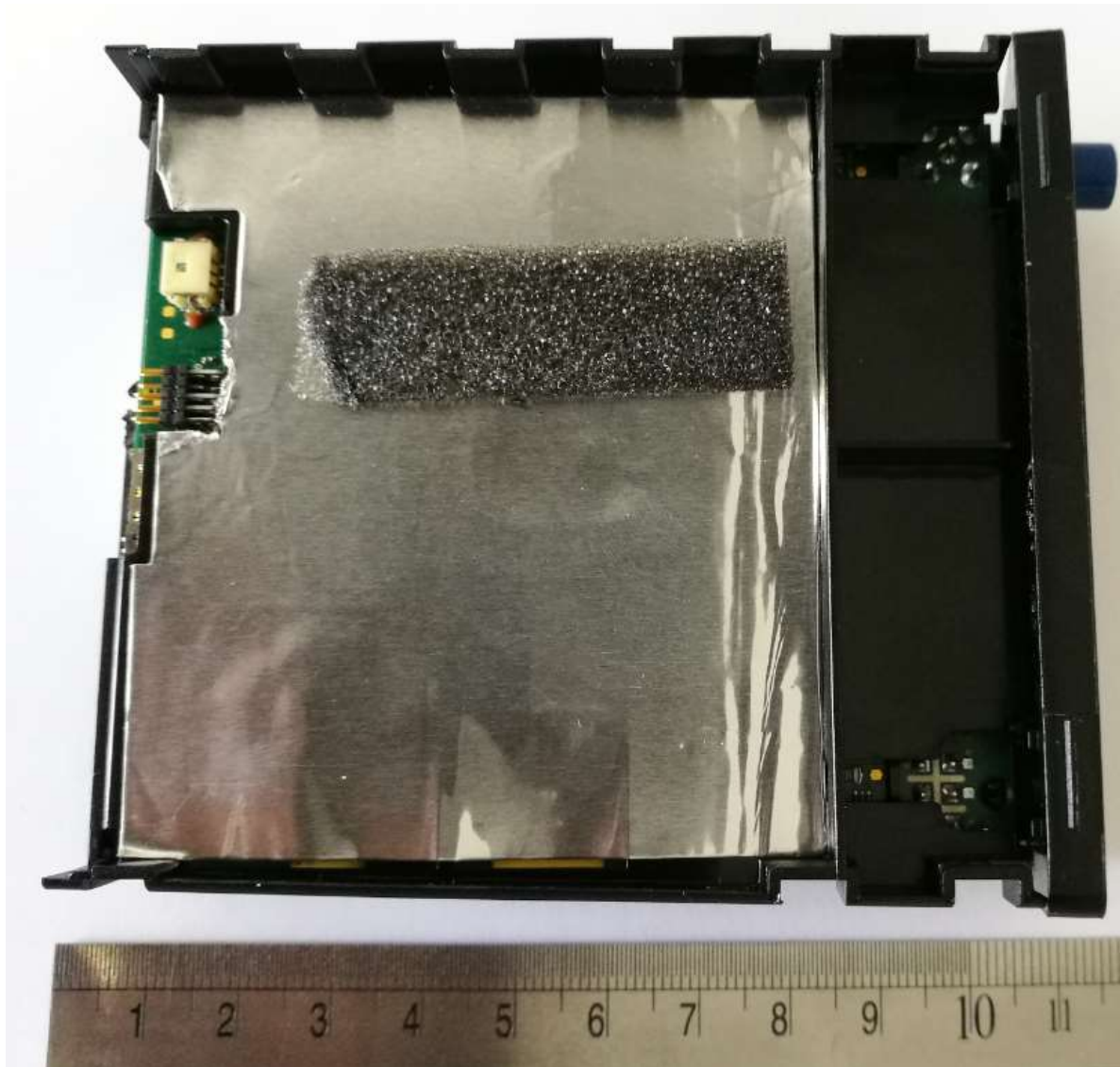


**Figure 4: View of Main PCB on Carrier (top view)**



Figure 5: View of Main PCB – Modem and Bluetooth without shield





**Figure 6: Bottom Side of Main PCB on Carrier – battery NOT fitted (MiX 44MC-3G)**



**Figure 7: Bottom Side of Main PCB**