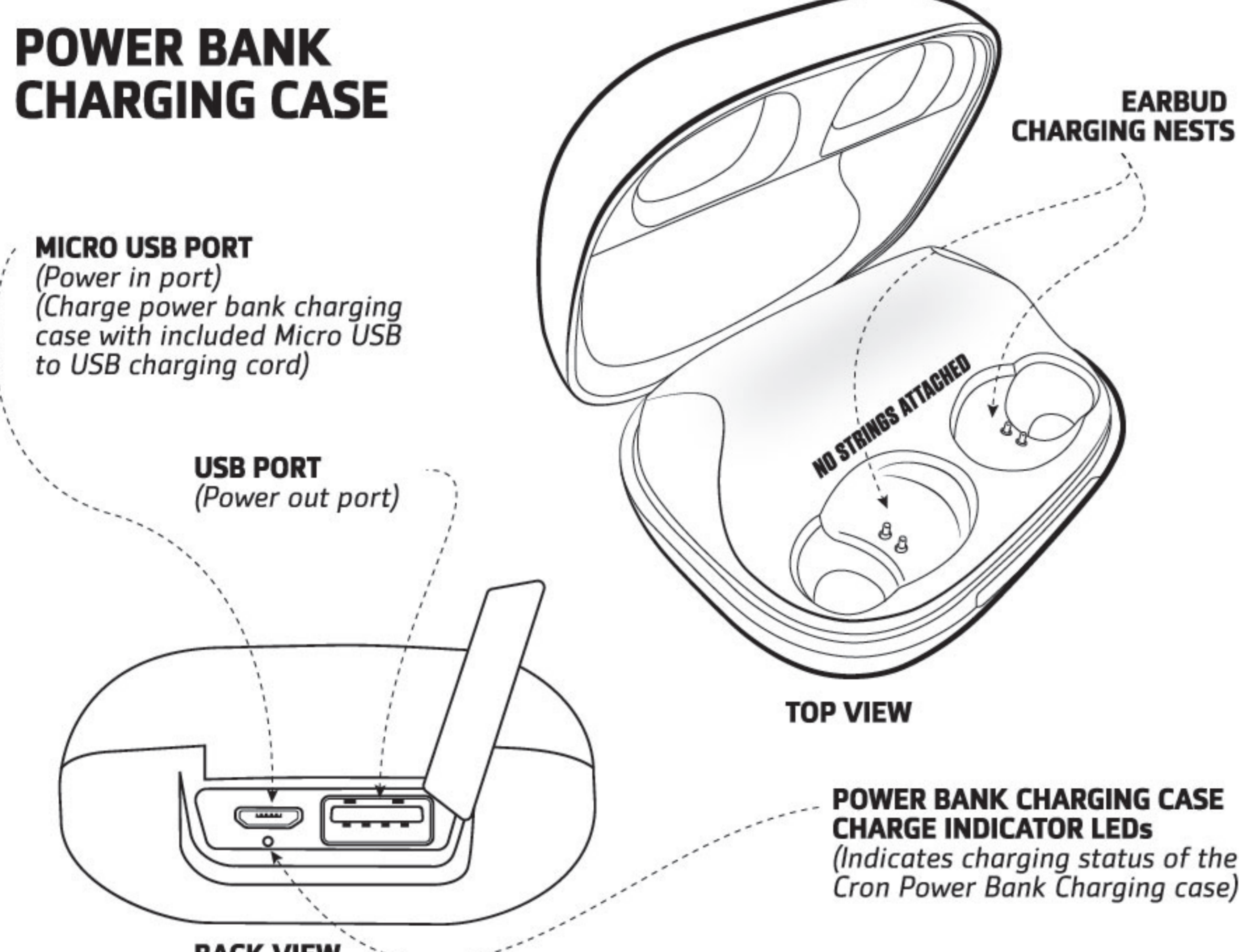




**CRON** **TRUE WIRELESS**

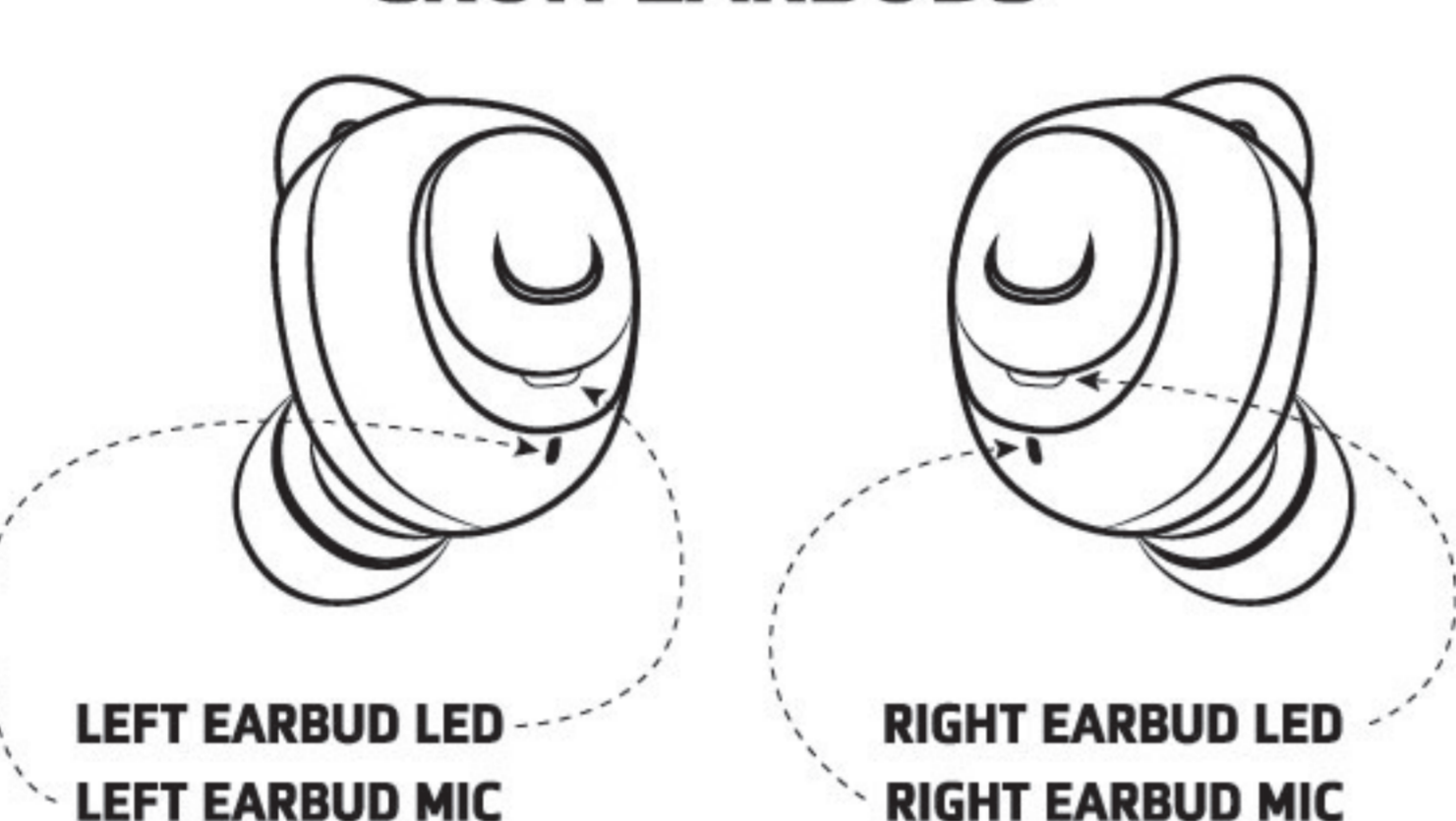


**POWER BANK CHARGING CASE**



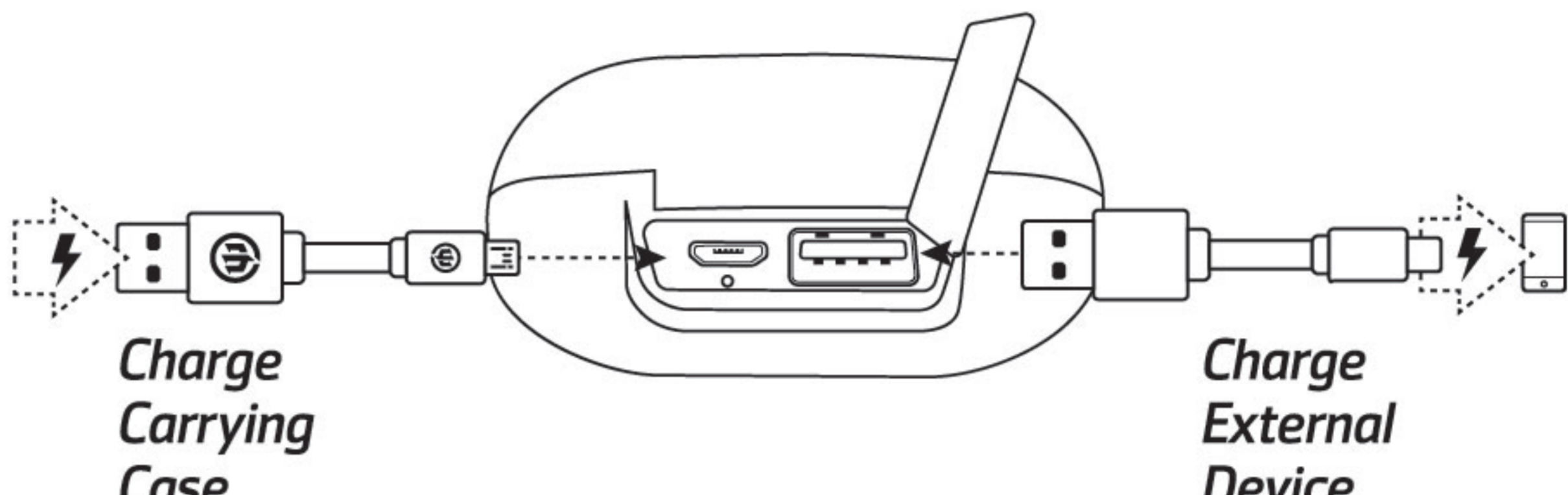
**POWER BANK CHARGING CASE CHARGE INDICATOR LEDs**  
(Indicates charging status of the Cron Power Bank Charging case)

**CRON EARBUDS**



**3 SIZES OF CRON CUSHIONS**  
(Gently remove cushions when switching to your preferred size)

**USB TO MICRO USB CHARGING CORD**  
(Used to charge the Power Bank Charging Case. Do not use with wireless charger)



**Charge Carrying Case**

**Charge External Device**

**CHARGING CASE STATUS LIGHTS:**

- Charging – Flashing Orange LEDs
- Fully Charged – Solid Orange LED

**EARBUD STATUS LIGHTS:**

- Charging – Slow flashing white LEDs
- Fully Charged – LEDs will turn solid white briefly and then shut off.

**FIRST TIME USE FOR DUAL EARBUD MODE**

(If you want to use a single earbud, please refer to section "Single Earbud Use" on Page 7.)

- 1 Make sure the Cron earbuds are charged (Please refer to section "Charging the Cron Earbuds" on page 3) and Bluetooth device (phone, computer, tablet etc.) is turned on with the Bluetooth feature enabled (this is usually found in settings).
- 2 Remove charged earbuds from charging case. They will turn on and sync together automatically.
- 3 Both earbuds will sync together; both will beep.
- 4 The right earbud, when in dual earbud mode is the "communicator." Once both earbuds are synced, the right earbud will flash red and white.
- 5 Your device will detect the Cron's pairing name "Wicked Cron". Select "Wicked Cron" on your device to start pairing to your device.
- 6 The right earbud will beep when paired with your device and then the LED will turn off.
- 7 You're ready to go!

**FUTURE USE AFTER INITIAL PAIRING THE CRON TO YOUR DEVICE**

(If this is the first time the Cron earbuds are being paired to your Bluetooth device, or if the Cron earbuds were "forgotten", please see "First Time Use" section on Page 3.)  
(If you want to use a single earbud, please refer to section "Single Earbud Use" on Page 7.)

**CONTINUED USE AFTER INITIAL PAIRING OF THE CRON EARBUDS TO YOUR DEVICE**

Continued use after initial pairing the Cron earbuds to your

**CHARGING THE CRON EARBUDS**

Delicately place the Cron earbuds into the earbud charging nests. The cushions on the earbud will face down. A small magnetic pull will help the earbuds fall into the correct position. The Cron earbuds will show a slow flashing white LED when charging. LEDs will briefly turn solid white then turn off when Cron earbuds are fully charged.

The Cron Power Bank Charging Case will shut down automatically when the Cron earbuds both reach full charge or when both the earbuds are removed from the case.

**CHARGING EXTERNAL DEVICES WITH POWER BANK CHARGING CASE**

External devices like phones or other small electronics that can charge via USB, can be plugged into the USB port (large port) of the Power Bank Charging Case. Using the device's charging cord, plug into the USB port on the charging case, followed by plugging the micro USB end into your personal device.

**CHARGING CRON POWER BANK CHARGING CASE VIA Qi WIRELESS CHARGER**

To charge your Cron Power Bank Charging Case, make sure your Qi wireless charger is plugged into a power source. Rest the Charging Case onto the wireless charger

NOTE: You may need to slightly adjust the position of the Cron Power Bank Charging Case on the Qi wireless charger until the charging sensors from the charging case and the wireless charger align and charging begins.

device

- 1 Remove both Cron earbuds from the Cron Power Bank Charging Case (they will sync to each other automatically)
- 2 Earbuds will automatically pair to the last device it was paired to.

**TURNING ON CRON EARBUDS**

There are two ways to turn on the Cron earbuds:

- 1 Remove earbuds from their charging case.
- OR
- 2 Hold both center buttons for 1-2 seconds. (This is when the earbuds have shut down outside of the charging case.)

**TURNING OFF CRON EARBUDS**

- 1 Place earbuds back into their charging case. They will automatically turn off.
- OR
- 2 Hold center button, on either right or left earbud, for 5 seconds. You will hear a shut-down beep.

**DISCONNECTED**

When out of range, or if your device becomes disconnected from the Cron earbuds, the Cron earbuds will automatically go into pairing mode with the right earbud's LED flashing white/red.

**PAUSE/PLAY**

When both earbuds are paired to your device you can pause and play your music by using a short press on the center button with either the left or right earbud. (Please note when using BOTH earbuds, you can perform this function using EITHER earbud.)

left earbud for an additional time in single earbud mode. Please follow the instructions in the section "First Time Use-For Single Earbud Use" below. Please note that when pairing the Left earbud to your device (using single earbud), you will notice that "Wicked Cron" shows up a second time in your pairing name options. Please pair with the newest "Wicked Cron" option as this will be directly connected to the LEFT earbud.

Note: "Wicked Cron" might show up in your Bluetooth device's menu twice. This happens when the earbuds go into "single earbud use," or when one earbud is removed from the charging case for several seconds before it's partner. Please follow the steps below to reset to one "Wicked Cron" for future dual earbud use:  
1 Place both earbuds in the charging case to turn them off.  
2 Forget both "Wicked Cron" devices from your device.  
3 Take both earbuds out of the charging case at the same time (within a few seconds of each other.)  
4 A new "Wicked Cron" will display on your Bluetooth menu. Connect to the new "Wicked Cron."

**FIRST TIME USE- FOR SINGLE EARBUD USE**

\*\*If you have previously connected your Cron earbuds to your device using both earbuds, unpair "Wicked Cron" from your Bluetooth settings on your device.

- 1- Remove one earbud, keep other earbud off and in case.
- 2- "Wicked Cron" will appear in Bluetooth menu. Pair to "Wicked Cron."

Note: To return to "Dual Earbud Mode"

- 1 Place both earbuds in charging case.

**IMPORTANT SAFETY INSTRUCTION**

- 1 Read these instructions.
- 2 Keep these instructions.
- 3 Read all warnings.
- 4 Follow all instructions.

Attention should be drawn to the environmental attention of battery disposal. The use of apparatus in moderate climates.

This device complies with Industry Canada (licence-exempt RSS standards). Operation is subject to the following two conditions: (1) This device may not cause interference, and (2) This device must accept any interference, including interference that may cause undesired operation of the device.

**INSTRUCTION DE SÉCURITÉ IMPORTANTE**

- 1 Lisez les instructions.
- 2 Gardez ces instructions.
- 3 Avertissez tous les avertissements.
- 4 Suivez toutes les instructions.

Il convient d'attirer l'attention sur les problèmes d'environnement dus à la mise au déchet des piles. Si l'appareil est destiné à être utilisé sous un climat tempéré.

Le présent appareil est conforme aux CNR d'Industrie Canada applicables aux appareils radio exempts de licence. L'exploitation est autorisée aux deux conditions suivantes: (1) l'appareil ne doit pas produire de brouillage, et (2) l'utilisateur de l'appareil doit accepter tout brouillage radioélectrique subi, même si le brouillage est susceptible d'en compromettre le fonctionnement.

**PRECAUTIONS**

LISTENING TO AUDIO AT EXCESSIVE VOLUMES CAN CAUSE PERMANENT HEARING DAMAGE. USE AS LOW A VOLUME AS POSSIBLE. Over exposure to excessive sound levels can damage your ears resulting in permanent noise-induced hearing loss (NIHL). Please use the following guidelines established by the Occupational Safety Health Administration (OSHA) on maximum time exposure to sound pressure levels before hearing damage occurs.

**SAFE USE & HAZARD WARNINGS**  
90 dB SPL at 8 hours, 95 dB SPL at 4 hours, 100 dB SPL at 2 hours, 105 dB SPL at 1 hours, 110 dB SPL at 30 min, 115 dB SPL at 15 min, 120 dB SPL. Avoid as damage may occur

**PRÉCAUTIONS**

ÉVITEZ D'ÉCOUTER DE LA MUSIQUE À UN NIVEAU EXCESSIF, CAR CE CI PEUT CAUSER DES DOMMAGES AUDITIFS PERMANENTS. Les lignes directrices suivantes ont été établies par la Occupational Safety Health Administration (OSHA). Elle souligne le temps maximal d'exposition à divers niveaux de pression sonore avant que des dommages auditifs soient causés. Veuillez utiliser ces lignes directrices afin de limiter votre exposition à des niveaux de bruit élevés, ce qui peut endommager votre capacité auditive et entraîner une perte auditive permanente.

**UTILISATION SANS RISQUE ET AVERTISSEMENTS DE DANGER**  
90 dB SPL à 8 heures, 95 dB SPL à 4 heures, 100 dB SPL à 2 heures, 105 dB SPL à 1 heures, 110 dB SPL à 30 min, 115 dB SPL à 15 min, 120 dB SPL. Évitez, des dommages peuvent être causés

**ADVERTENCIA**

ESCUCHA DEL AUDIO NIVELES EXCESIVOS DE VOLUMEN PUEDE CAUSAR DAÑOS PERMANENTES AUDITIVOS. SE USE COMO VOLUMEN MÁS BAJO POSIBLE. Durante la exposición a niveles excesivos de ruido puede dañan los oídos estableciendo en ruido permanente de seguridad de salud ocupacional (OSHA) de tiempo máximo que los niveles de presión de sonido antes de que se produzca una lesión auditiva.

**USO SEGURO DE PELIGROS Y ADVERTENCIAS**  
90 dB SPL a 8 horas, 95 dB SPL a 4 horas, 100 dB SPL a 2 horas, 105 dB SPL a 1 hora, 110 dB SPL a 30 minutos, 115 dB SPL a 15 minutos, 120 dB SPL. Evite que se puede producir daños

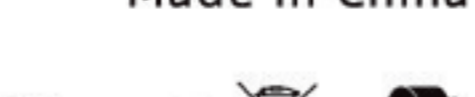
**Limitation of Liability** Any Changes or modifications not expressly approved by the party responsible for compliance could void the user's authority to operate the equipment. The device has been evaluated to meet general RF exposure requirements. The device can be used in portable exposure condition without restriction. In no event, under any cause of action or theory of liability, shall Wicked Audio Inc., its distributors or suppliers be liable to you or any third party for indirect, incidental, consequential, special, exemplary or punitive damages, of any and all nature whatsoever, arising out of use of or inability to use a product. This includes without limitation, property damage, loss of value of the product or any third party products that are used in or with the Wicked Audio products, even if the Wicked Audio product has been advised of the possibility of such damages that one may encounter. Without limiting the foregoing, you understand and agree that Wicked Audio has no liability for any damages or destruction to the consumer electronics devices or other personal property that are contained in inside or outside the Wicked Audio products. This includes without limitation, laptops, cellular phones, or other hand-held devices, or any loss of data contained on the foreign device. Notwithstanding any damages that you might incur for general damages in contract, tort (including negligence) or otherwise, the entire aggregate liability of Wicked Audio and any of its distributors and/or suppliers shall be limited to the amount actually paid by you for the Wicked Audio product giving rise to liability. Some states and/or jurisdictions do not allow the exclusion or limitation of incidental or consequential damages, so the above limitations or exclusions may not apply to you. The limitations of liability set forth above shall apply to the maximum extent permitted under applicable law.

**FCC Statement** This equipment has been tested and found to comply with the limits for a Class B digital device, pursuant to Part 15 of the FCC Rules. These limits are designed to provide reasonable protection against harmful interference in a residential installation. This equipment generates uses and can radiate radio frequency energy and, if not installed and used in accordance with the instructions, may cause harmful interference to radio communications. However, there is no guarantee that interference will not occur in a particular installation. If this equipment does cause harmful interference to radio or television reception, which can be determined by turning the equipment off and on, the user is encouraged to try to correct the interference by one or more of the following measures:  
-- Reorient or relocate the receiving antenna.  
-- Increase the separation between the equipment and receiver.  
-- Connect the equipment into an outlet on a circuit different from that to which the receiver is connected.  
-- Consult the dealer or an experienced radio/TV technician for help.  
This device complies with part 15 of the FCC rules. Operation is subject to the following two conditions (1) This device may not cause harmful interference, and (2) This device must accept any interference received, including interference that may cause undesired operation

MODEL #: WI-TW35X  
FCC ID #: 2AFN7W1-TW35X

**LIMITED ONE-YEAR WARRANTY**  
Keep your receipt to obtain warranty service. Go to [www.wickedaudio.com](http://www.wickedaudio.com) for more details.

Mis au point au Utah  
États-Unis Fabriqué en Chine  
Developed in Utah, U.S.A  
Made in China



**GARANTEE LIMITÉE D'UN AN**  
Conservez votre reçu pour obtenir le service en vertu de votre garantie. Consultez [www.wickedaudio.com](http://www.wickedaudio.com) pour en savoir plus.