

# **2.4/5GHz Dual band 433M 11ac USB Wireless Adapter**



## **User Manual**

**Version 1.0 | 10/11/2014**

## Table of Contents

<b>Chapter 1 Product Introduction</b> .....	<b>2</b>
1.1 Product Features .....	2
1.2 Product Application.....	2
1.3 Security Warning.....	2
1.4 LED's Description .....	2
1.5 WPS Button .....	3
1.6 Package Contents .....	3
<b>Chapter 2 Installation Guide</b> .....	<b>4</b>
<b>Chapter 3 Connect Wireless Network</b> .....	<b>8</b>
<b>Specification</b> .....	<b>11</b>

## **Chapter 1 Product Introduction**

---

The product is a dual band 433M 802.11ac USB Wireless Adapter, backward compatible with 802.11a/b/g/n, it supports selectable 2.4GHz or 5GHz, adopting 1 × 1 MIMO (Multiple Input Multiple Output) architecture, 5G(802.11ac) up to 433 Mbps data rate, so you don't worry about interference from neighboring wireless devices and the plethora of household appliances that may interfere with their wireless signal, ensuring high-quality connections ideal for bandwidth-intensive applications such as HD video streaming and online gaming. Support WPS one key encryption, we only need to press the WPS button, can quickly and easily encrypted data transmission for wireless network, so as to prevent the invasion of illegal users.

### **1.1 Product Features**

- 2.4GHz or 5GHz dual frequency band wireless connection.
- Compatible with the latest IEEE802.11ac standard, backward compatible with 802.11a/b/g/n.
- Support 64/128bit WEP, WPA and WPA2 advanced security encryption.
- Support one key WPS encryption.
- USB 2.0 interface.
- Support Windows2000/XP/Vista/7/8, Mac, Linux operation system.

### **1.2 Product Application**

The USB Wireless Adapter provides fast, reliable, low-cost solution for wireless access. The concrete application is as follows:

- Requiring more mobility of staff, they want to access the wireless network anywhere in a company.
- Due to construction or budget constraints, someplace are not suitable for LAN wiring, such as history, ancient buildings, the lease of land or temporary location.
- Avoiding expensive cable, leased lines or right-of-way of the companies, individuals.

### **1.3 Security Warning**

- Please install and use this product until you complete to read this user manual.
- In order to guarantee the product to work correctly, please pay attention to the waterproofing and damp proofing.
- Prevent some harmful substances (such as acid, alkali, etc.).
- Please do not use this product placed directly in the sun or other sources of heat.
- If a failure occurs, please contact our customer service dept, do not open this product by yourself.

### **1.4 LED's Description**

In the front of the wireless card, there is a status indicator. It will flash while a normal data communication.

## **1.5 WPS Button**

You can set the wireless encryption just press the WPS button of equipment and the wireless router within two minutes at the same time.

## **1.6 Package Contents**

- Dual band 433M 11ac USB Wireless Adapter
- Use CD-ROM
- Warranty card

## Chapter 2 Installation Guide

This section will teach you how to use the CD-ROM software for the installation of your network card package, the package has been the driver, configuration software, which installs its configuration software will automatically install the driver.

This installation step to Windows XP Operating system as an example, other systems of the installation process, please refer to the related instructions in the operation system.

1. Please plug the wireless card into the computer's USB Interface. (Figure 1)

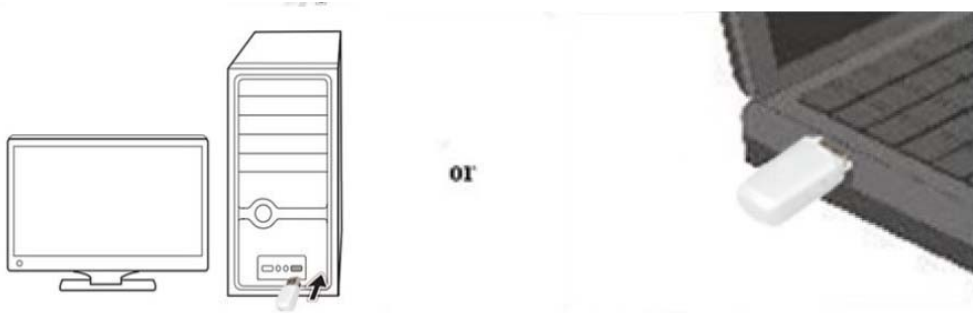


Figure 1

2. The **“Found New hardware Wizard”** dialog is coming here, we recommend you to select **“Cancel”** button, use the Quick Setup CD offered, we can help you to easily install the driver and configuration software, of course, you can also click **“Next”**, Manual installation. (Figure 2)



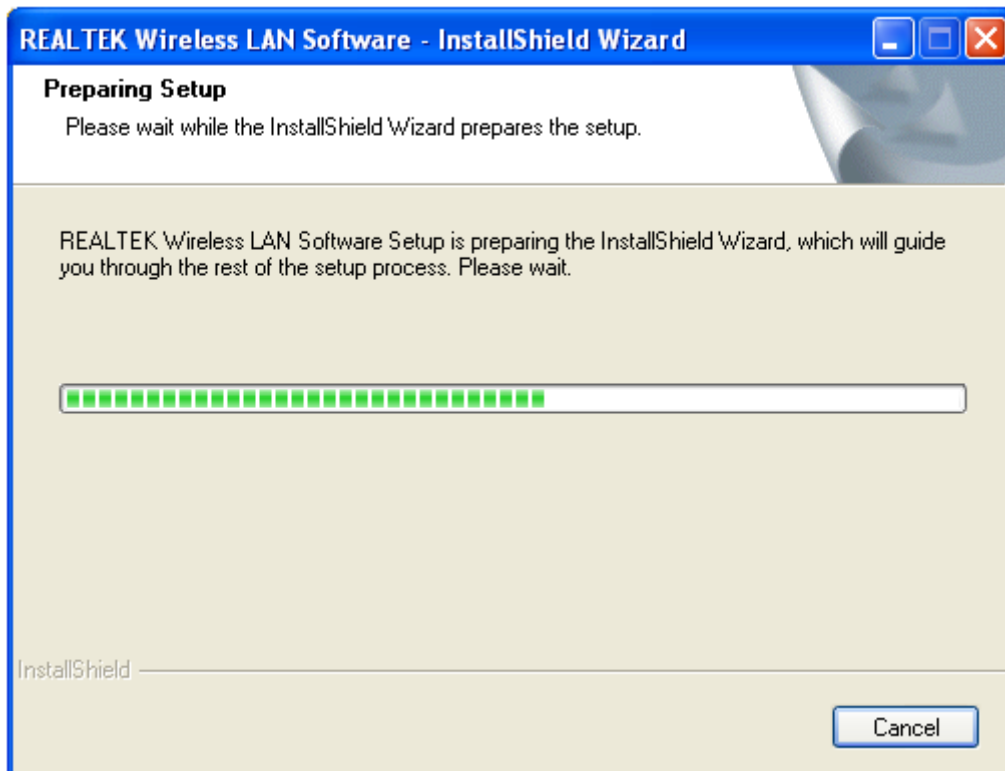
Figure 2

3. Before device installation, please install the software from the CD, Click on the “**Setup**” link to begin the installation. (Figure 3)



**Figure 3**

4. The Setup Program will detect automatically the install drivers and correct software by itself. The customer is according to "drive to install a guide to carry on to gradually install". (Figure 4, 5, 6, and 7 )



**Figure 4**



Figure 5

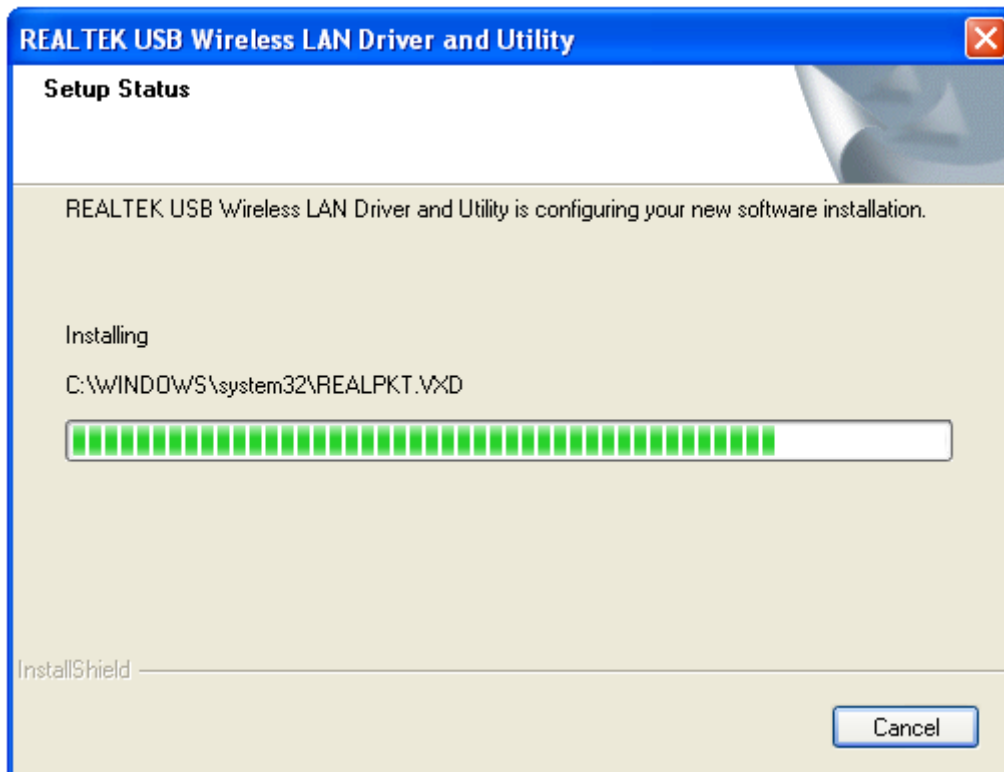
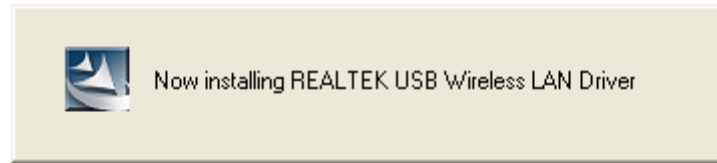
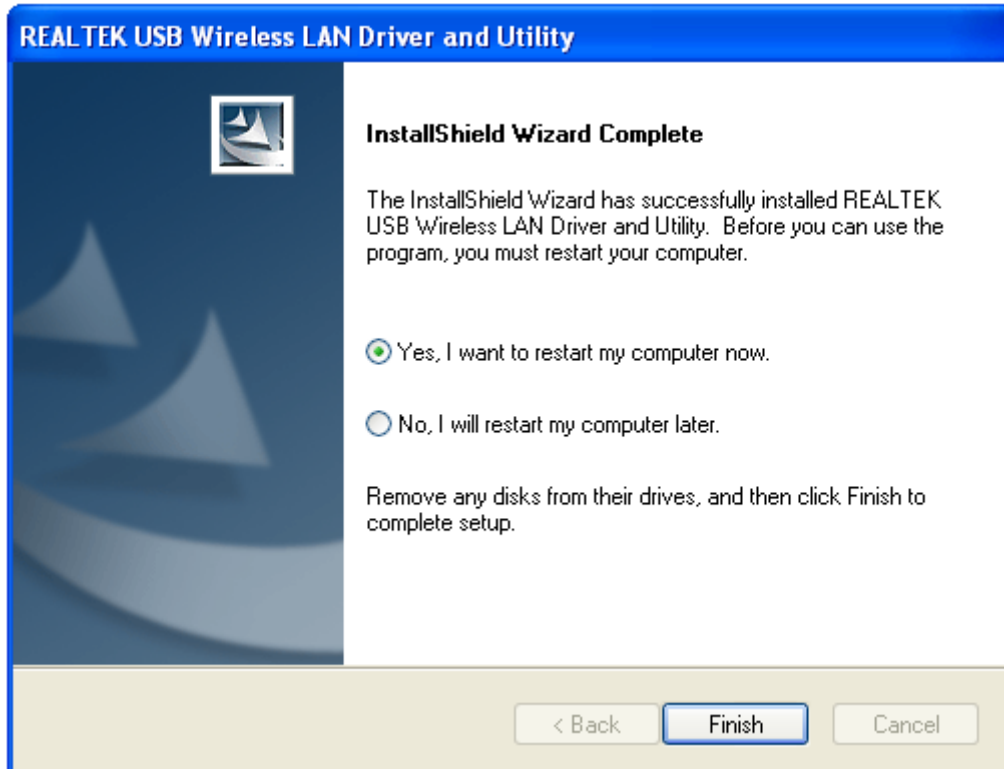


Figure 6



**Figure 7**

5. Click on **“Finish”**. The setup is already done. (Figure 8)



**Figure 8**



## Chapter 3 Connect Wireless Network

1. When the Wireless Adapter driver has been successfully installed, an icon will appear in computer desktop as below figure.



Figure 9

2. Click the icon, the following interface will appear. (Figure 10)

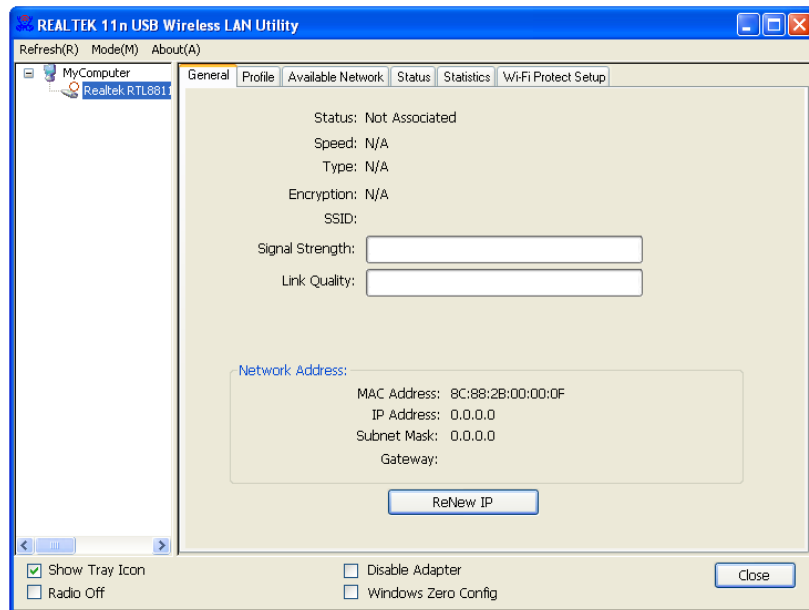


Figure 10

3. Select the “**Available Networks**” options, the interface will display all wireless networks that are available in your area. To connect to a network, simply highlight the wireless network name (SSID) and click “**Add to Profile**”. (Figure 11,12,13,14)

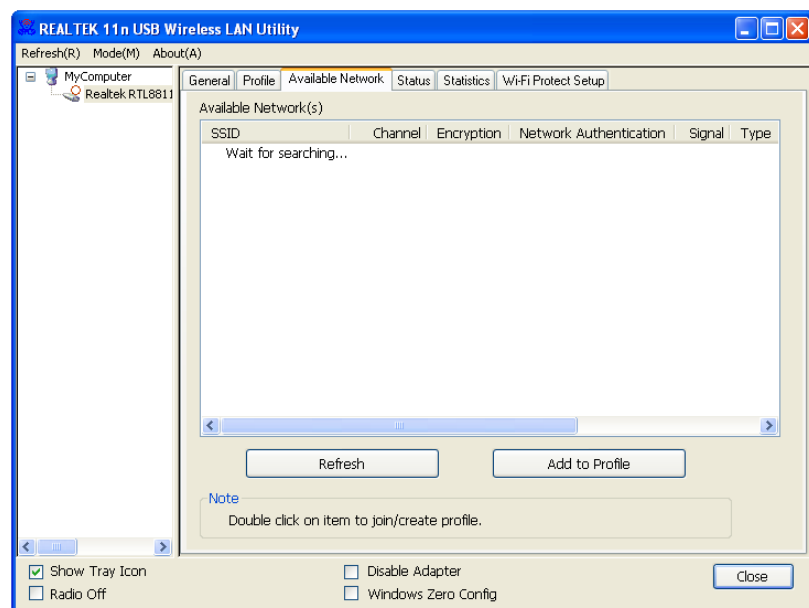


Figure 11

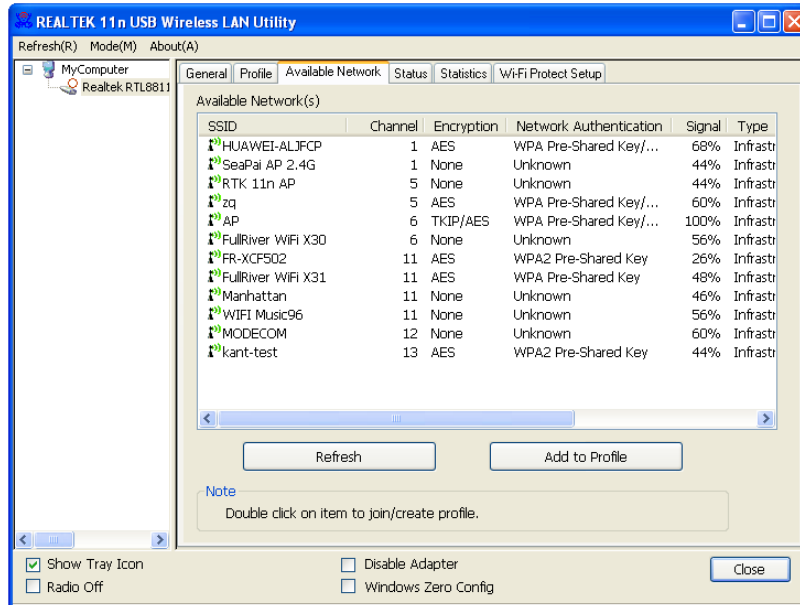


Figure 12

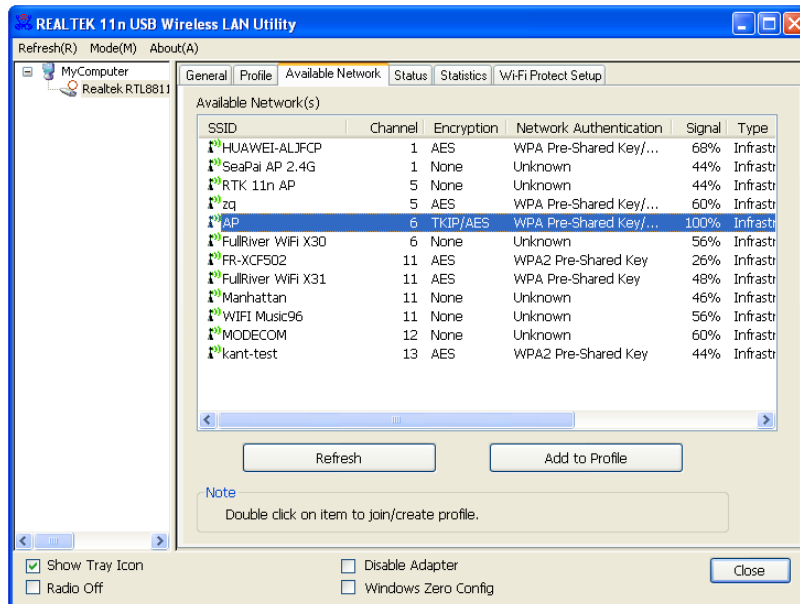


Figure 13

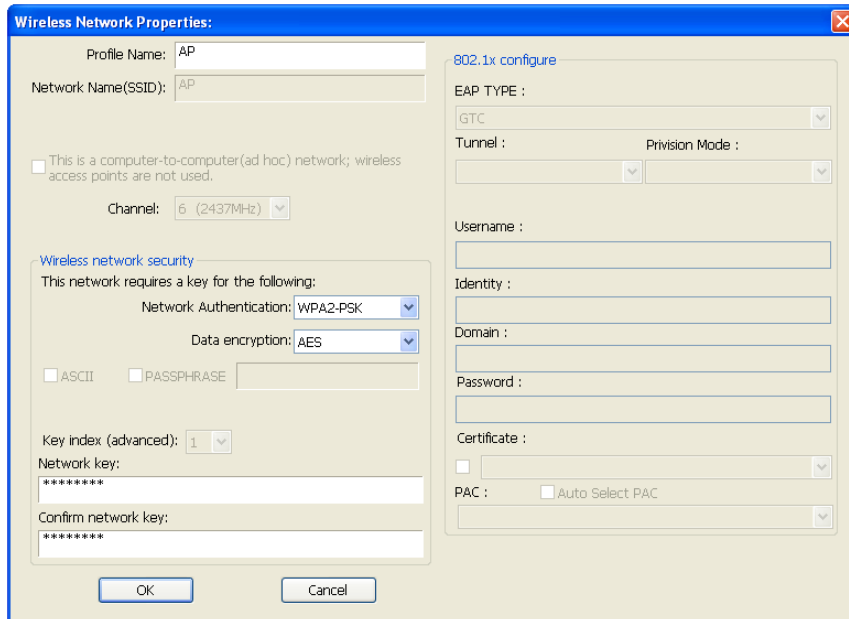


Figure 14

4. When the wireless adapter is connected to a wireless network is successful, the following screen will appear. (Figure 15)

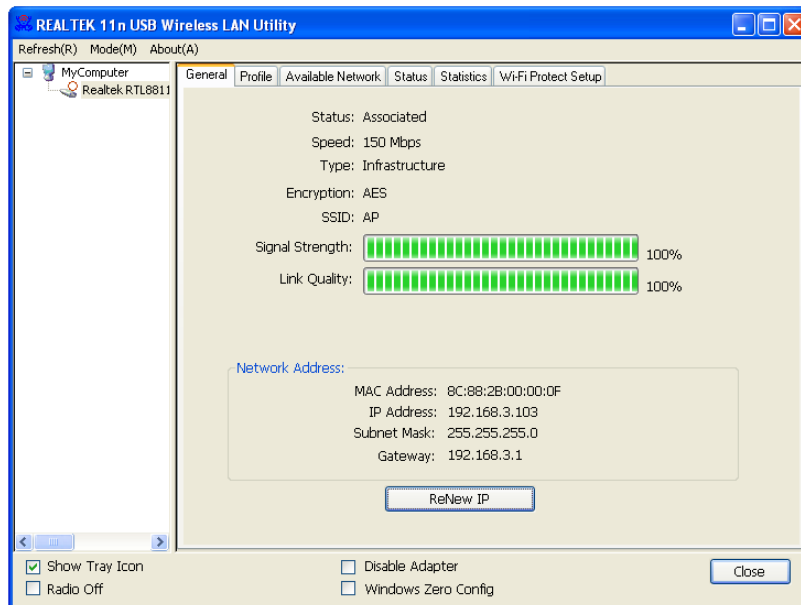


Figure 15

## Specification

Standards and Protocols	IEEE 802.11a, IEEE 802.11b, IEEE 802.11g, IEEE 802.11n, IEEE802.11ac
Interface Type	USB 2.0 Standard, USB1.1 Compliant
Frequency Band	<ul style="list-style-type: none"> <li>• 2.4 ~ 2.4835GHz</li> <li>• 5.15 ~ 5.25GHz</li> </ul>
Transmission Rate	11a: 6/9/12/18/24/36/48/54Mbps
	11b: 1/2/5.5/11Mbps
	11g: 6/9/12/18/24/36/48/54Mbps
	11n: up to150Mbps
	11ac: up to 433Mbps
Modulation Technology	DSSS with CCK, DQPSK, DBPSK OFDM with BPSK, QPSK, 16-QAM, 64-QAM, 256-QAM
Security	WPA2/WPA-PSK(AES, TKIP) WEP64, 128BIT
RF Power	9dBm (max)
Sensitivity @PER	11ac VHT80: -58dBm@10% PER, MCS9 11n HT40: -65dBm@10% PER, MCS7(2.4G) 11n HT20: -68dBm@10% PER, MCS7(2.4G) 11n HT40: -67dBm@10% PER, MCS7(5G) 11n HT20: -70dBm@10% PER, MCS7(5G) 11g: -71dBm@10% PER, OFDM54M 11b: -84dBm@8% PER, CCK11M 11a: -73dBm@10% PER, OFDM54M
LED Status	Link/Activity(blue)
Dimensions (L x W x H)	42 x 19.5 x 10.3mm
Environment	Operating Temperature: 0°C~40°C Storage Temperature: -20°C~70°C Operating Humidity: 10%~90% non-condensing Storage Humidity: 5%~95% non-condensing

**This device is indoor use only.**

## **FCC Statement**

This equipment has been tested and found to comply with the limits for a Class B digital device, pursuant to Part 15 of the FCC Rules. These limits are designed to provide reasonable protection against harmful interference in a residential installation. This equipment generates uses and can radiate radio frequency energy and, if not installed and used in accordance with the instructions, may cause harmful interference to radio communications. However, there is no guarantee that interference will not occur in a particular installation. If this equipment does cause harmful interference to radio or television reception, which can be determined by turning the equipment off and on, the user is encouraged to try to correct the interference by one or more of the following measures:

- Reorient or relocate the receiving antenna.
- Increase the separation between the equipment and receiver.
- Connect the equipment into an outlet on a circuit different from that to which the receiver is connected.
- Consult the dealer or an experienced radio/TV technician for help.

This device complies with part 15 of the FCC Rules. Operation is subject to the following two conditions:

(1) This device may not cause harmful interference, and (2) this device must accept any interference received, including interference that may cause undesired operation.

Changes or modifications not expressly approved by the party responsible for compliance could void the user's authority to operate the equipment.

The device has been evaluated to meet general RF exposure requirement. The device can be used in portable exposure condition without restriction.