

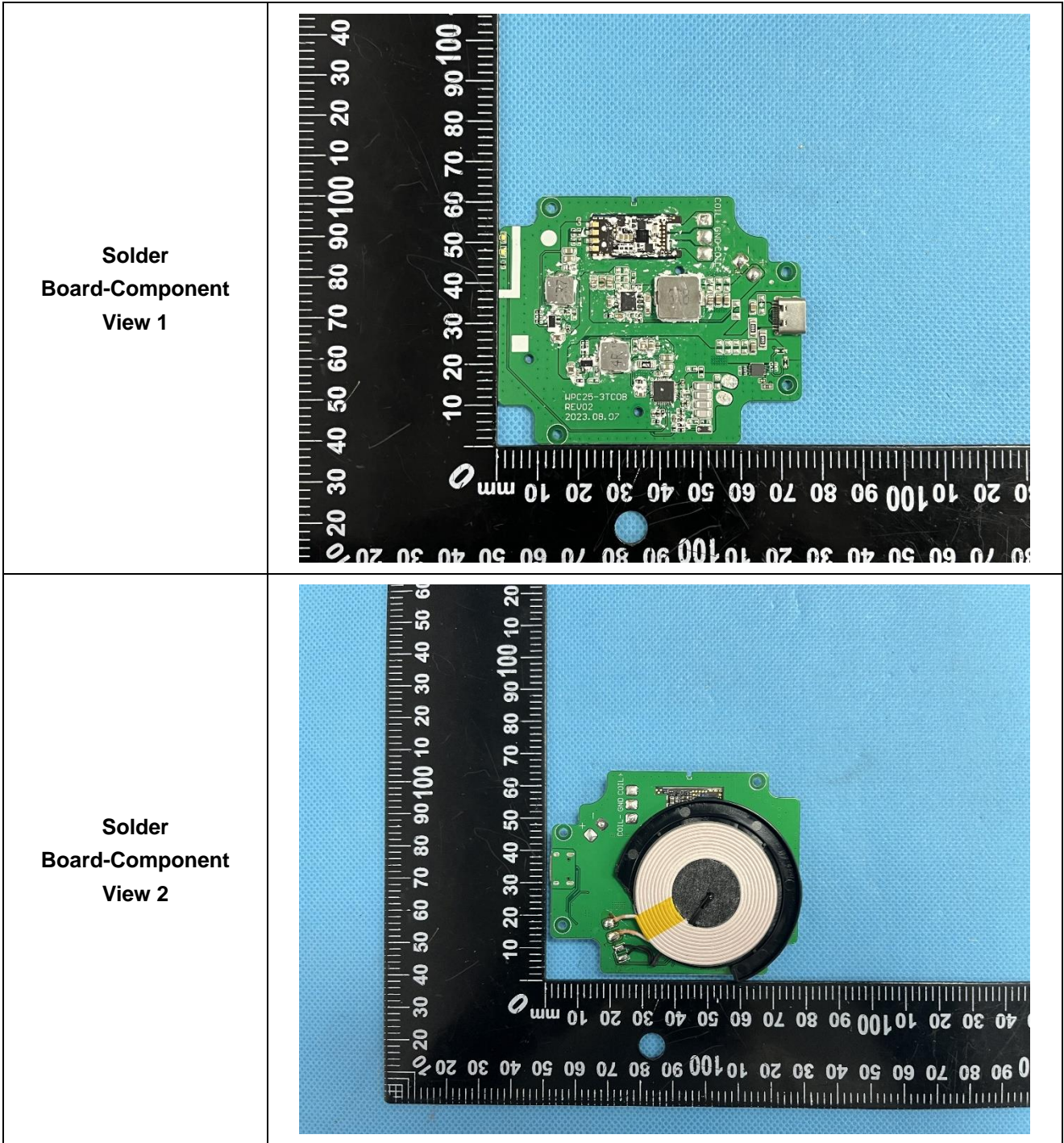
### EXHIBIT 3 - EUT INTERNAL PHOTOGRAPHS

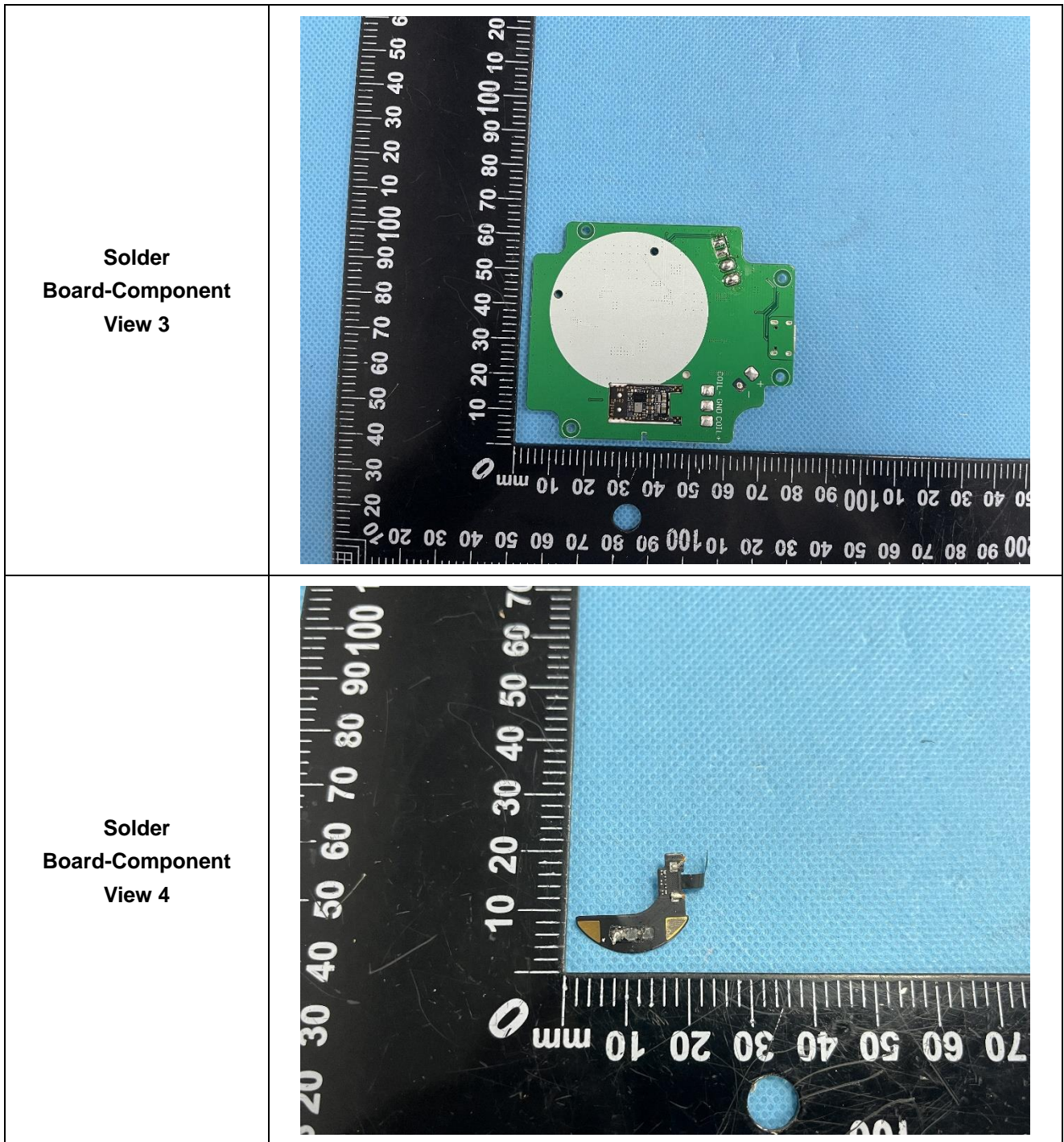
**EUT Housing and  
Board View 1**

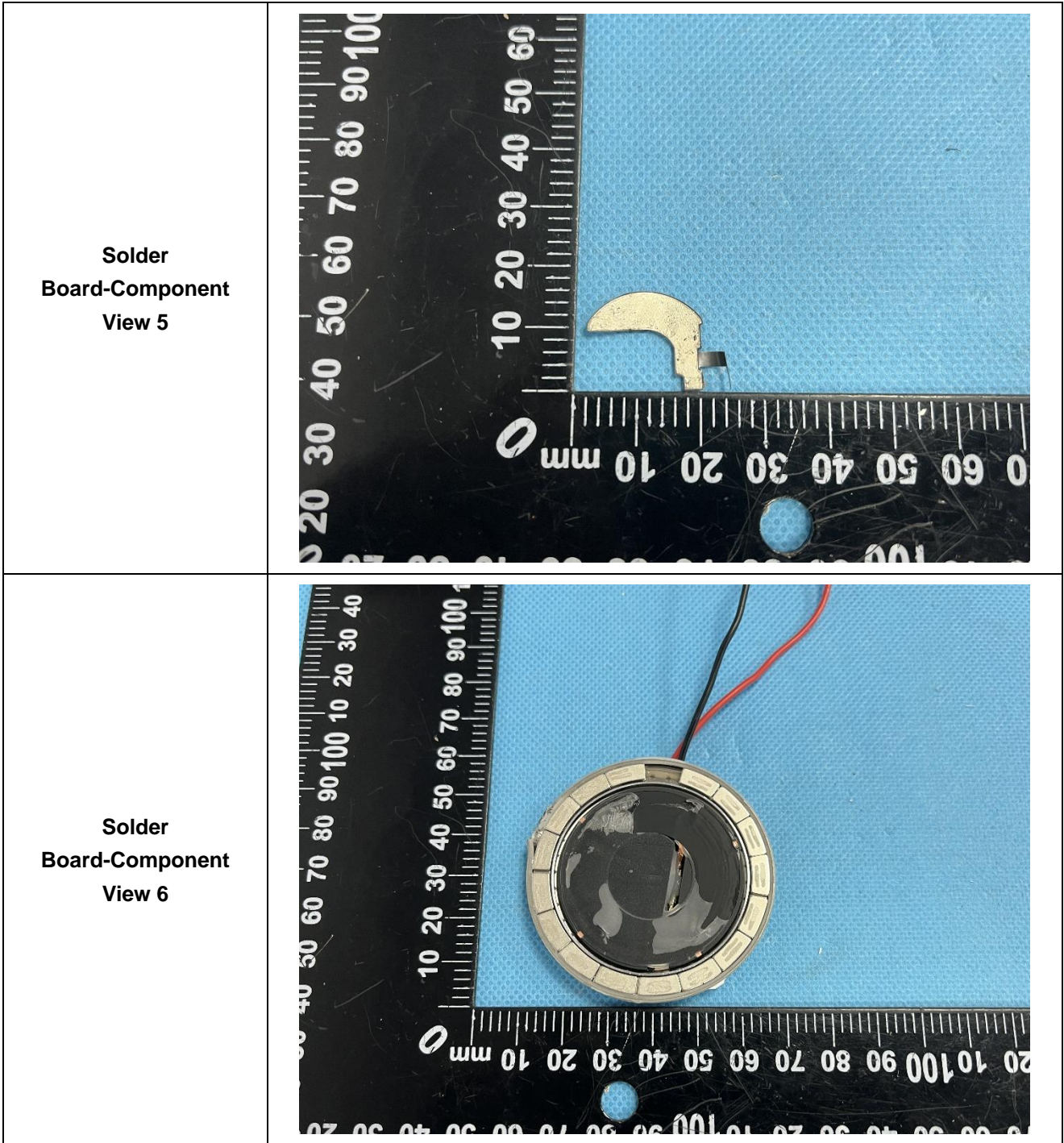


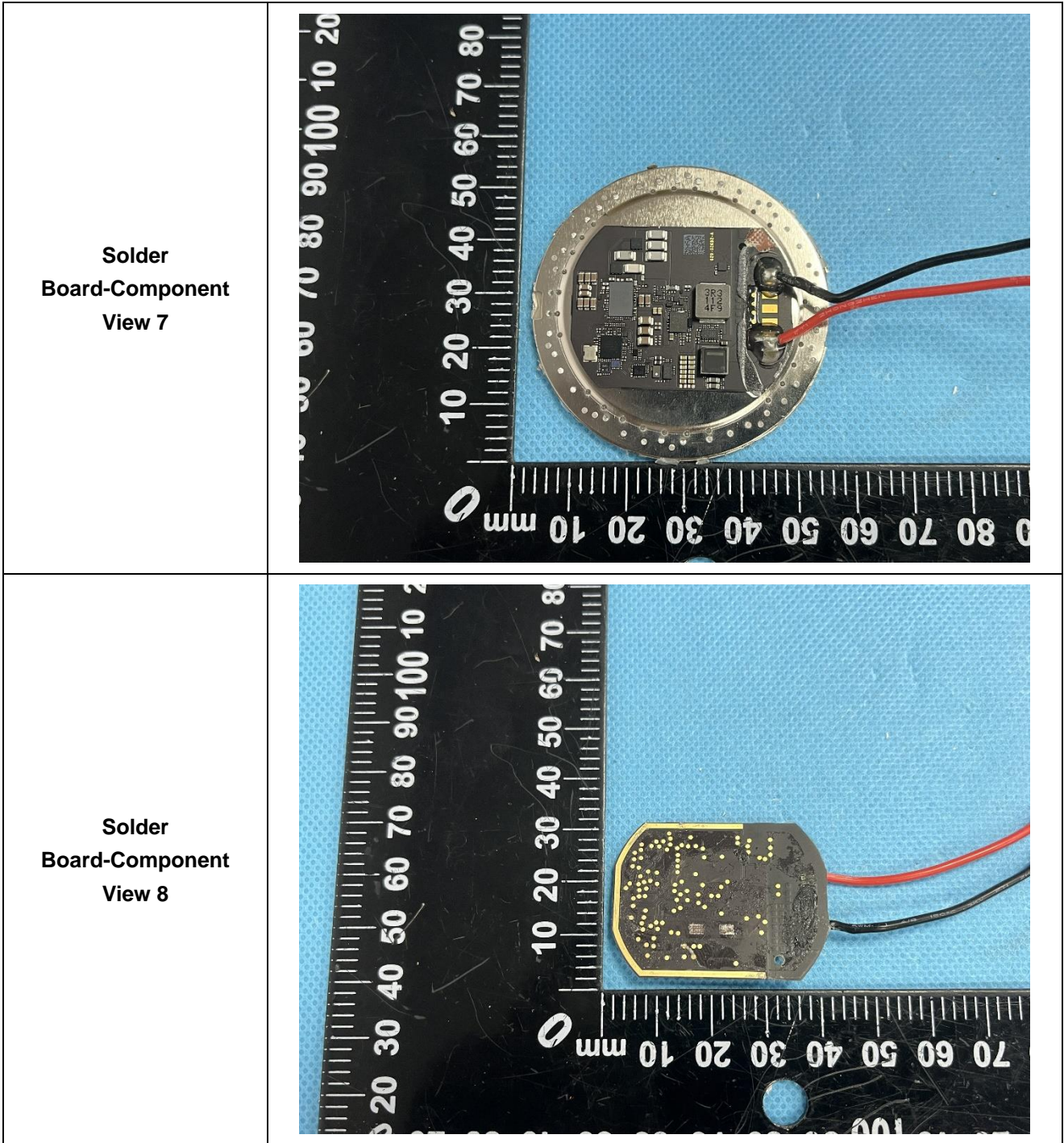
**EUT Housing and  
Board View 2**

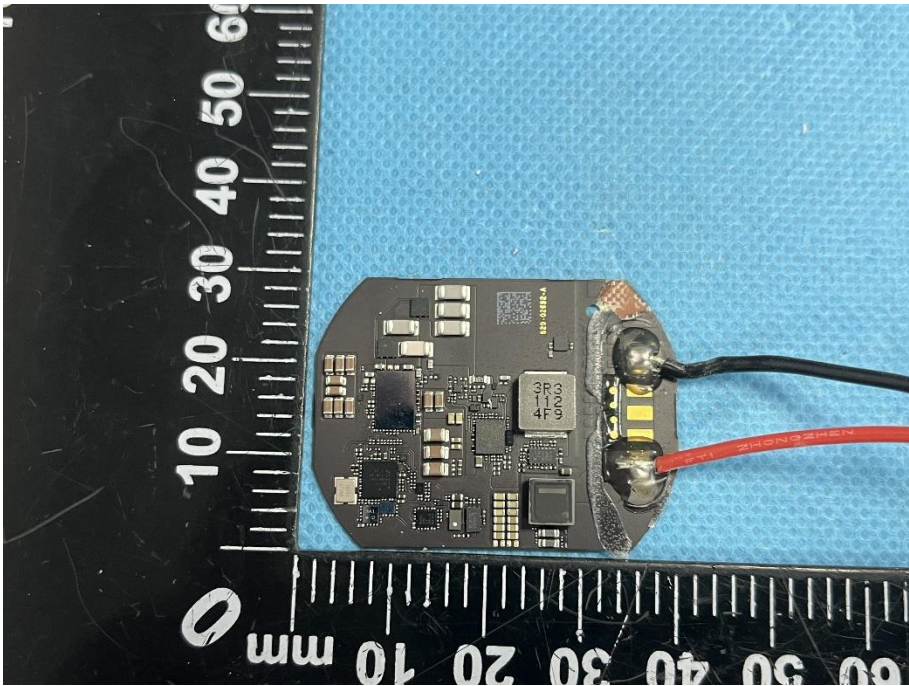
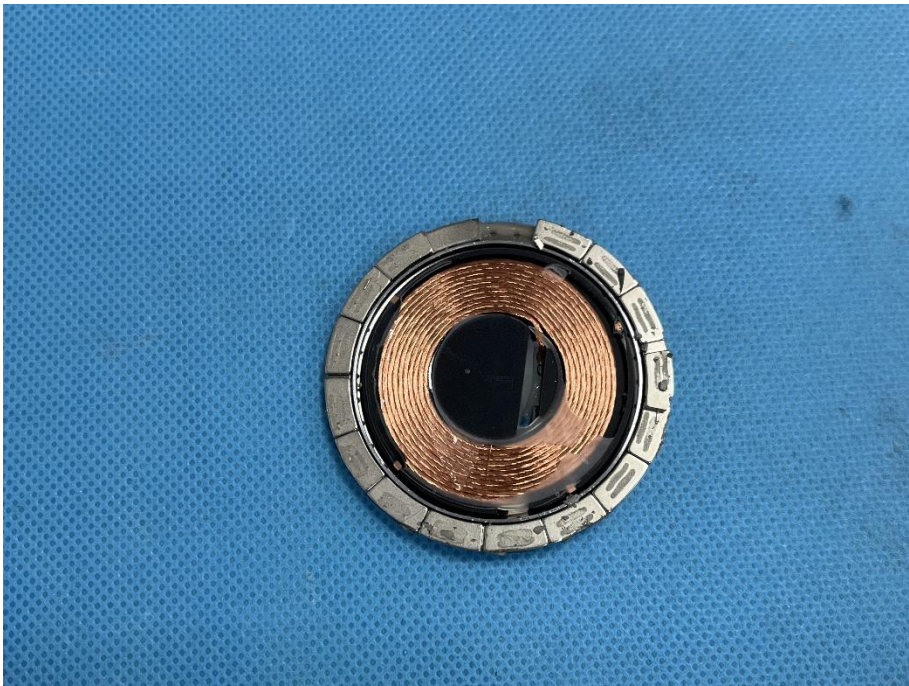










<p><b>Solder Board-Component View 9</b></p>	 A photograph of a small, circular printed circuit board (PCB) component. The board is populated with various electronic components, including a central microcontroller chip, several resistors, and other surface-mount components. Two wires are soldered to the board: a red wire and a black wire. The component is placed on a blue textured surface. A black ruler with white markings is positioned vertically to the left of the component, showing measurements in millimeters (0, 10, 20, 30, 40, 50, 60).
<p><b>Solder Board-Component View 10</b></p>	 A photograph of a circular component, likely a coil or inductor, viewed from the top. It features a central black circular core surrounded by multiple concentric turns of copper wire. The wire is encased in a silver-colored metal housing or shield. The component is set against a blue textured background.

