

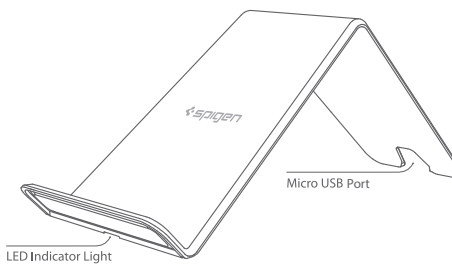
FAST WIRELESS CHARGER

F303W User Manual



Using the F303W Fast Wireless Charger

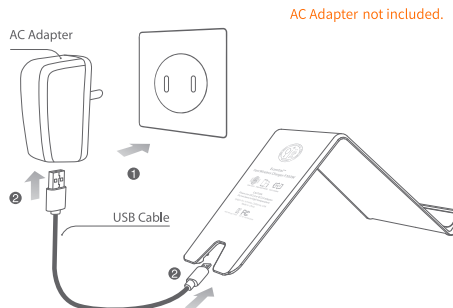
Thanks for choosing Spigen!
We hope you enjoy wireless charging with your new F303W Fast Wireless Charger! Please read this manual before using the product and use it for future reference.



Specifications

- Input: DC 5V 2A or 9V 1.67A
- Radiated power: 5W, 9W
- Charge efficiency: ≥70%
- Transmission distance: 0.27 inch (Max)
- Size: 7.55 × 3.3 × 0.74 inches
- Product Weight: 4.23 ounce
- Frequency: 111~205KHz

How to Connect to an AC Adapter



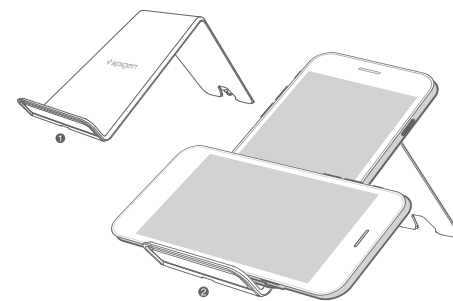
- 1 Plug the AC Adapter into a power outlet.
- 2 Connect the USB 2.0 interface to the AC Adapter and the Micro USB to the charger.

Once all parts are connected, the lights will appear in the order below:

| | BLUE LED | RED LED |
|----|-------------|-------------|
| 1. | BLINKS ONCE | BLINKS ONCE |
| 2. | BLINKS ONCE | BLINKS ONCE |
| 3. | BLINKS ONCE | BLINKS ONCE |
| 4. | OFF | OFF |

⚠ Integrated smart chips in charger allow for long standby times.

Charging Mode



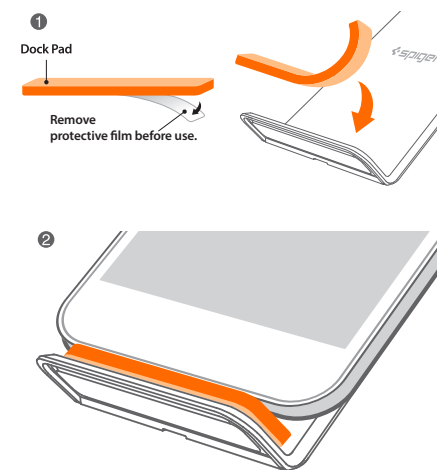
- 1 The LED light will indicate when it is on Standby Mode.
- 2 Charging will begin as soon as the phone is placed on the stand and turn LED lights to reflect its status as shown in the table below.

LED Light Status

| Adapter | During charge | Fully charged |
|---|--|------------------|
| 5V 2A Adapter | LED Blue light (Message: Wireless charging) | LED Blue, Red ON |
| QC2.0 or QC3.0 (Fast Charger, 9V 1.67A) | LED Red light (Message: Fast Wireless charging) | LED Blue, Red ON |

Safety Precautions

Adjusting the Dock Position



- Attach the included dock pad to adjust the position of your phone.

Safety Precautions

1. Do not apply excessive pressure on the pad.
2. Do not disassemble or expose to water.
3. Do not use in extreme heat, humidity, or corrosive environments.
4. Avoid contact with magnet strips or chips (IDs, credit cards, etc.) to prevent magnetic failure.
5. Keep the wireless charger at least 20cm (7.87 inches) away from implantable medical devices (pacemakers, implantable cochlear, etc) to avoid potential interference in such devices.
6. Keep out of reach of children to avoid accidents and ensure safety.
7. For fast charging, use a QC 2.0 or QC 3.0 adapter of 9V 1.67A.

All sketches shown are visual guidelines and examples on how to operate the wireless charger. Your setup may vary.

This device complies with Part 15 of the FCC rules. Operation is subject to the following two conditions: 1) this device may not cause harmful interference, and 2) this device must accept any interference received, including interference that may cause undesired operation. Changes or modifications not expressly approved by the party responsible for compliance could void the user's authority to operate the equipment.

Thank you for your purchase!

If you have any issues or concerns, let us know at spigen.desk.com

Happy with your purchase?

GOOD! ★★★★★

Share with others how much you like our product!



Explore More Products

amazon.com All Spigen Go

google.com Spigen

ebay.com Spigen All Categories Search

