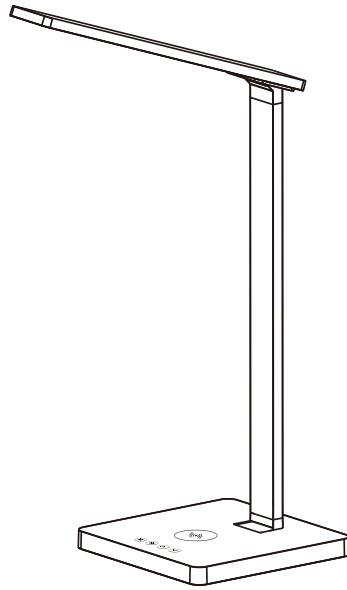


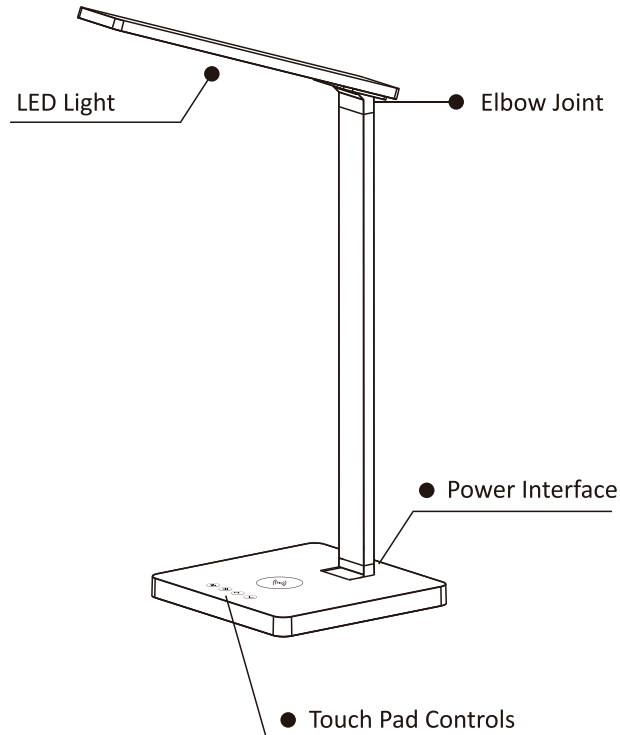
FLYMUDA

Desk Lamp with Wireless charging User Manual



Thank you for your purchase with us! Please read all the information carefully before you use the product and keep the manual for future reference.

Features



Product Description

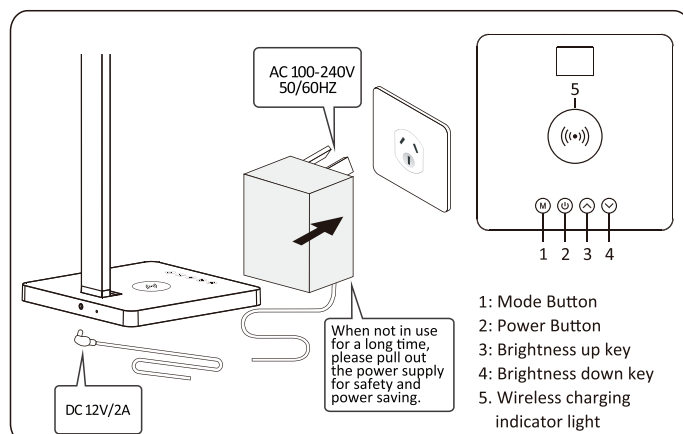
Features

- Sleek design: Classic product design of simple shape and clean lines.
- Caring for eyes: Three modes of color temperatures generates truly gentle lights.
- Touch pad control: Easy to adjust brightness by having touch pad with sound notifications.
- Convenience at use: Timer function with automatic shut-down.
- Sturdy and safe: Aluminum alloy arm and stand
- Powered by DC 12V/2A
- More energy-saving than traditional lamps
- Minimizing the harm to skin from lighting
- Gentle and eye-friendly
- Flicker-free light beam
- Natural lighting
- Environmental friendly

Technical specifications

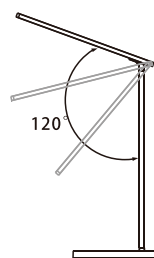
Material Type	ABS+ Aluminium alloy	LED driver	DC 12V/ 2A
3 Color Temperatures: 6000K±10% / 4000K±10% / 3000K±10%			
Number of light bulbs: Cold light: 30PCS X 0.2W LEDs / Warm light: 30PCS X 0.2W LEDs			
Lighting Method	surface source	Operation method	Touch pad
Wattage	8.4W ±10%	Wattage for Wireless Charging	15W
New Weight	900g	Product Dimensions	16.2cm(W)*16.2cm(D)*48.6cm(H) / 6.4in(W)*6.4in(D)*19.1in(H)

Instructions

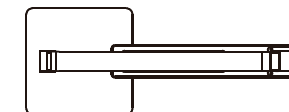


1. Connect the adaptor to the lamp power interface, then connect the power adapter to the socket.
2. In considering safety and energy saving reasons, please store the product in a dry place and have it remained unplugged to avoid unwanted circumstances such as short circuit.
3. Power Button (⏻) : Tap this button to turn on/ off the device. When the lamp is off, the blue light from the power button is on for guiding in dark.
4. Mode Button (M) : tap this button to switch the color temperatures.
5. Brightness up key (⬆) : Tap to adjust the brightness to higher levels, and with long press, it adjusts rapidly.
6. Brightness down key (⬇) : Tap to adjust the brightness to lower levels, and with long press, it adjusts rapidly
7. Wireless Charger for Mobiles: Place smartphones on wireless charging pad to start charging. If the charging position is improper, the blue and red LED light will flash alternately. Place the phone at proper position until LED light turn into blue.
8. Wireless charging indicator light : When connecting the led lamp adaptor to the socket, the wireless charging blue & red indicator light will alternate flashing twice, then the red light on, which means the wireless charging in normal function. During charging, the wireless charging blue light on. If any foreign object on the wireless charging area, the blue & red indicator light will flashing.

Moving Range of Each Component



- 1: Lamp opening angle: 120
- 2: Head moving range:
 - When adjusting, please hold still the base.
 - The moving range of the lamp arm is 120.



The lamp can be conveniently stored by being simply folded as how the graph above demonstrates.

Notes:

1. Do not disassemble or throw into fire or water, to avoid damage.
2. Do not use wireless charging lamp in severely hot, humid or corrosive environments, to avoid circuit damage and occurs leakage phenomenon.
3. Do not place too close with a magnetic stripe or RFID card (ID card, credit cards, etc.) to avoid magnetic failure.
4. Please keep the distance at least 30cm between implantable medical devices (pacemakers, implantable cochlear, etc.) and the wireless charging lamp, to avoid potential interference with the medical device.
5. To take care of the children, to ensure that they won't play the lamp as a toy
6. Some phone cases may affect the charging performance. Ensure there is no metal object between your phone cases or try to take it off before charging.
7. The light source of this luminaire is not replaceable; when the light source reaches its end of life the whole luminaire shall be replaced.

Warning:

1. The adaptor is for socket Mounted only. Not for Recess Use.
2. The adaptor is for LED Module use only.
3. The adaptor is for indoor use only.
4. The external flexible cable or cord of this luminaire cannot be replaced; if the cord is damaged, the luminaire shall be destroyed.

Any questions and warranty needs please contact:
Email: flymuda@gmail.com
Facebook: Flymuda Globals
Insgram: flymuda_global

MADE IN CHINA

This equipment has been tested and found to comply with the limits for a Class B digital device, pursuant to part 15 of the FCC Rules. These limits are designed to provide reasonable protection against harmful interference in a residential installation. This equipment generates, uses and can radiate radio frequency energy and, if not installed and used in accordance with the instructions, may cause harmful interference to radio communications. However, there is no guarantee that interference will not occur in a particular installation. If this equipment does cause harmful interference to radio or television reception, which can be determined by turning the equipment off and on, the user is encouraged to try to correct the interference by one or more of the following measures:

- Reorient or relocate the receiving antenna.
- Increase the separation between the equipment and receiver.
- Connect the equipment into an outlet on a circuit different from that to which the receiver is connected.
- Consult the dealer or an experienced radio/TV technician for help.

Caution: Any changes or modifications to this device not explicitly approved by manufacturer could void your authority to operate this equipment.

This device complies with part 15 of the FCC Rules. Operation is subject to the following two conditions: (1) This device may not cause harmful interference, and (2) this device must accept any interference received, including interference that may cause undesired operation.

The device has been evaluated to meet general RF exposure requirement.