

Product Name

ISMART1.0

Product Type

ZS11E/ZS11MCE3

Technical parameters

The supply voltage range for Nominal mode is from 9V to 16V.

Product description

Car Radio with Bluetooth and WI-FI Module is equipment installed in a car to provide in-car entertainment and information for the vehicle occupants. It consisted of a simple FM/AM/DRM radio, media players and Bluetooth module. User can listen to FM/AM, DRM, USB audio by using the equipment.

Please read this manual thoroughly since the information in it may allow you to know how to operate your car safely and properly, and enjoy your driving at maximum.

The detailed use guide for this device could be found in car user manual too.

ZS11E Radio Frequency Bands

FM: 87.5-108.00MHz

AM: 531-1629KHz

DRM:VHF band III 200

ZS11MCE3 Radio Frequency Bands

FM: 87.5-108.00MHz.

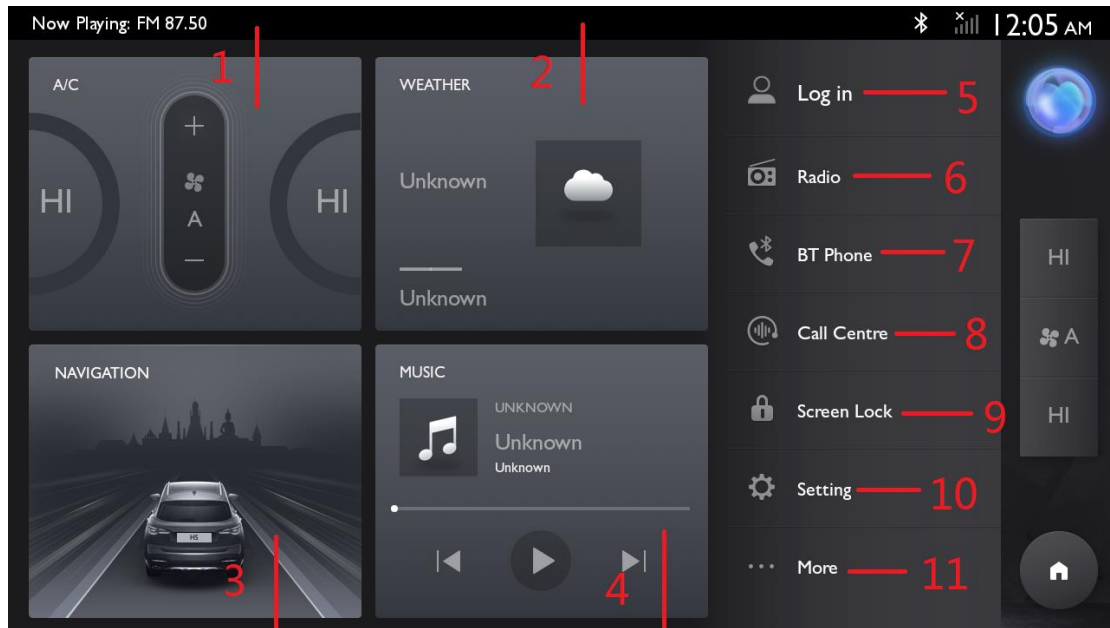
AM: ①China/Middle East/Asia Pacific: 531-1629 kHz;

②South America: 530-1710 kHz;

③Australia:531 -1602 kHz.

Main Interface

Main Menu Bar Description



NO	Describe
1	Air conditioning Touch to view the Air conditioning interface.
2	Weather View the temperature and city.
3	Navigation Touch to enter Navigation interface.
4	Music Touch to enter the Music interface.
5	Personal Centre Touch to enter Personal Centre interface.
6	Radio Touch to enter Radio interface.
7	BT Phone Touch to enter BT phone interface.
8	Call Centre Touch to enter Call Centre interface.
9	Screen Lock Touch to enter Screen Lock interface.
10	Setting Touch to enter Setting interface.
11	More Touch to see more interfaces.

Manufacturing Factory Information

Manufacture:

Jiangsu Toppower Automotive Electronics Co.,Ltd.

Address:

No. 19 Fenghuang Road, Xuzhou Economic Development Zone, Jiangsu Province,
P. R. China

WARNING:

This device complies with part 15 of the FCC Rules. Operation is subject to the following two conditions: (1) This device may not cause harmful interference, and (2) this device must accept any interference received, including interference that may cause undesired operation.

FCC Statement

15.19

This device complies with Part 15 of the FCC Rules. Operation is subject to the following two conditions: (1) This device may not cause harmful interference. (2) This device must accept any interference received, including interference that may cause undesired operation.

15.21

Note: The grantee is not responsible for any changes or modifications not expressly approved by the party responsible for compliance. Such modifications could void the user's authority to operate the equipment.

15.105(b)

NOTE: This equipment has been tested and found to comply with the limits for a Class B digital device, pursuant to part 15 of the FCC Rules. These limits are designed to provide reasonable protection against harmful interference in a residential installation.

This equipment generates uses and can radiate radio frequency energy and, if not installed and used in accordance with the instructions, may cause harmful interference to radio communications. However, there is no guarantee that interference will not occur in a particular installation. If this equipment does cause harmful interference to radio or television reception, which can be determined by turning the equipment off and on, the user is encouraged to try to correct the interference by one or more of the following measures:

- Reorient or relocate the receiving antenna.
- Increase the separation between the equipment and receiver.
- Connect the equipment into an outlet on a circuit different from that to which the receiver is connected.
- Consult the dealer or an experienced radio/TV technician for help.

RF Exposure Statement

This equipment complies with FCC radiation exposure limits set forth for an uncontrolled environment. This equipment should be installed and operated with minimum distance of 20 cm between the radiator and your body.