
Antenna specification

Customer name: Project name: Switch

Version : V1.0

Antenna band: BT

Frequency range: 2400–2500MHz

Mechanism Engineer: RF Engineer: Hai tan

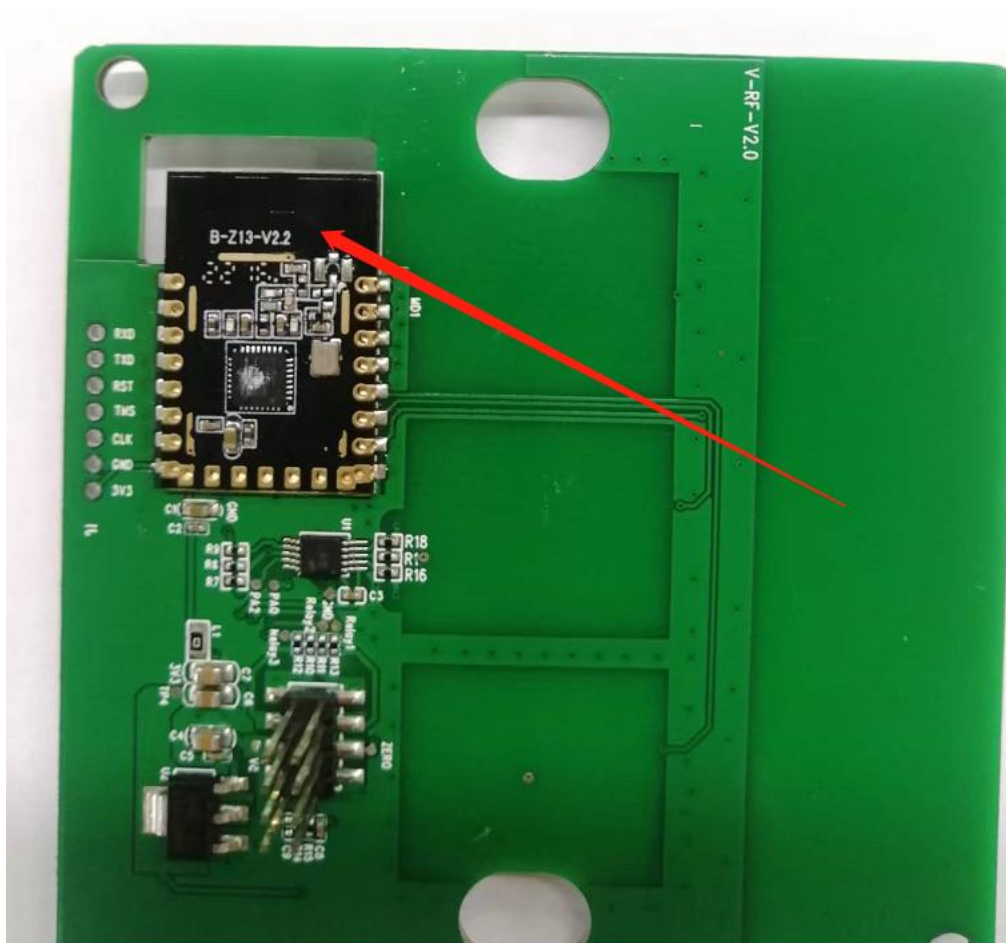
Check: jack

Date:20220615

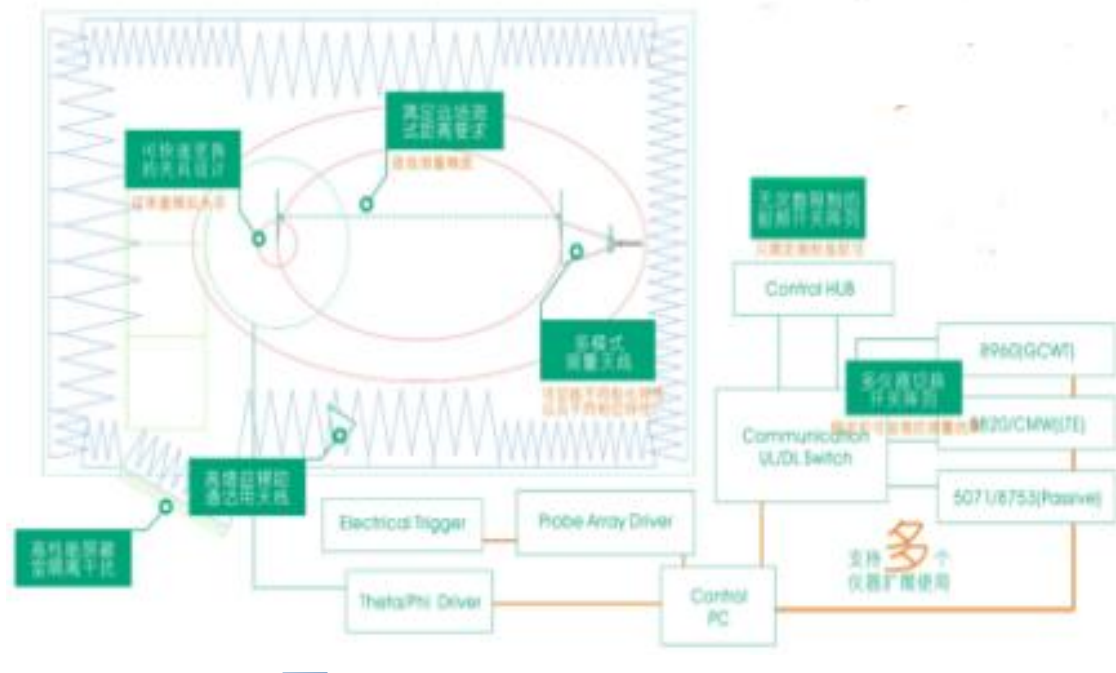
1. Instructions

B-Z13 (Based on the switch) ANT Test Report, BT Electrical performance results of the antenna, S11 antenna, Efficiency, gain。

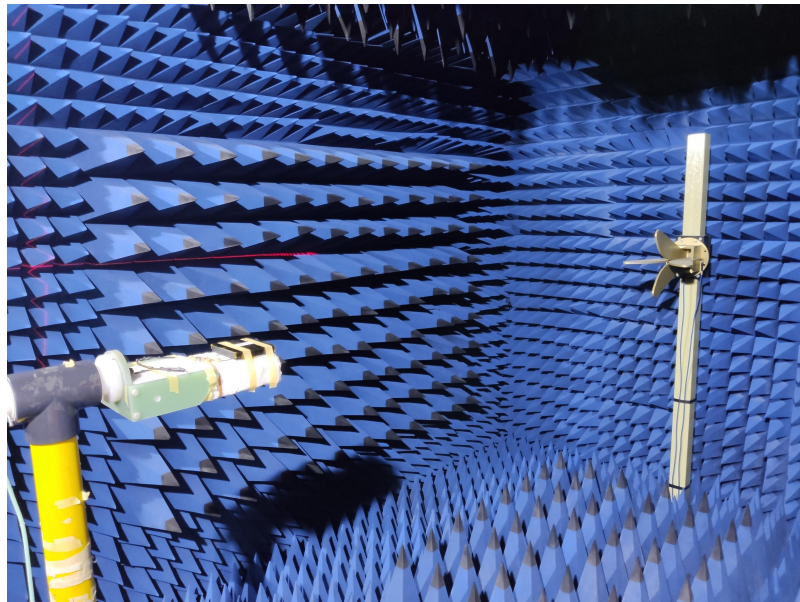
2. Antenna installation diagram



3. Test schematic of microwave anechoic chamber

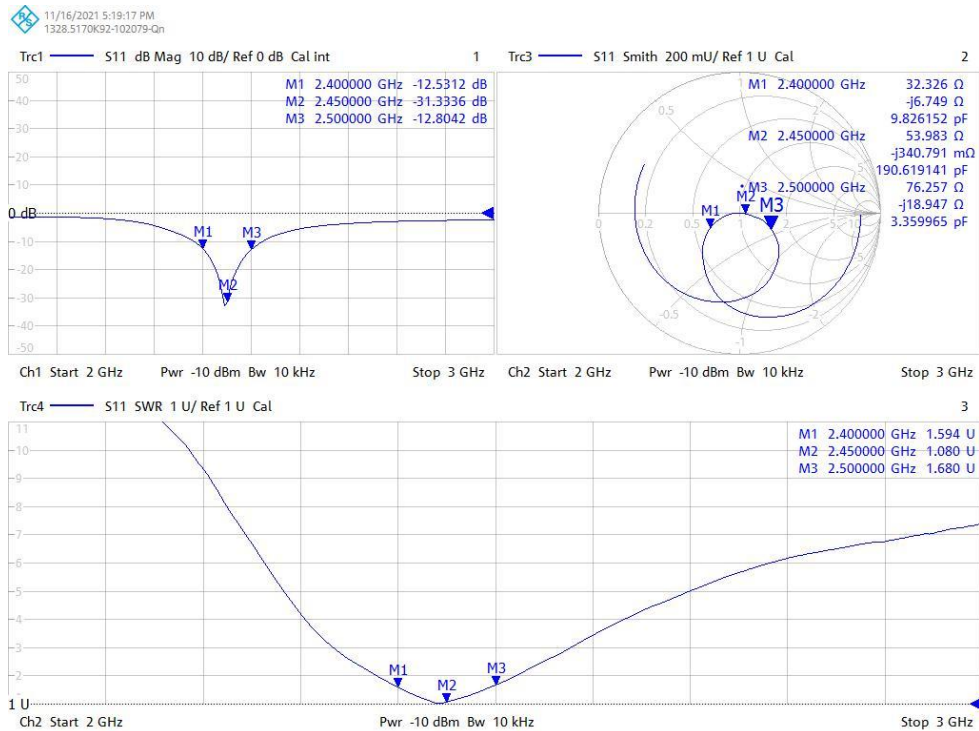


4. Position of antenna test anechoic chamber:



5. Antenna passive test data (with shell)

Zigbee Antenna



➤ Standing wave ratio data

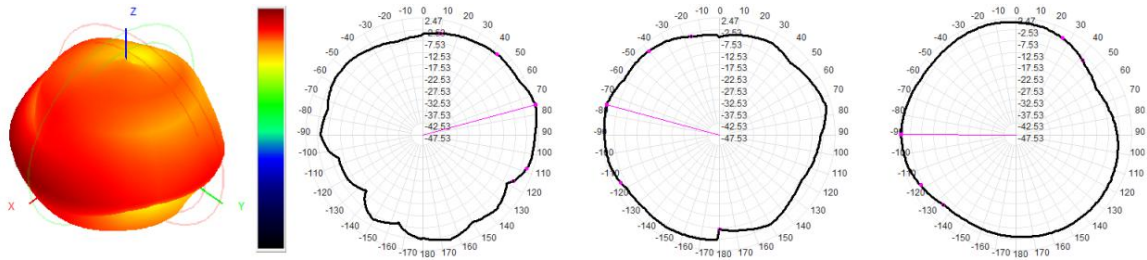
Freq/MHz	2400MHz	2450MHz	2500MHz
VSWR	1.59	1.08	1.68

➤ Antenna test data

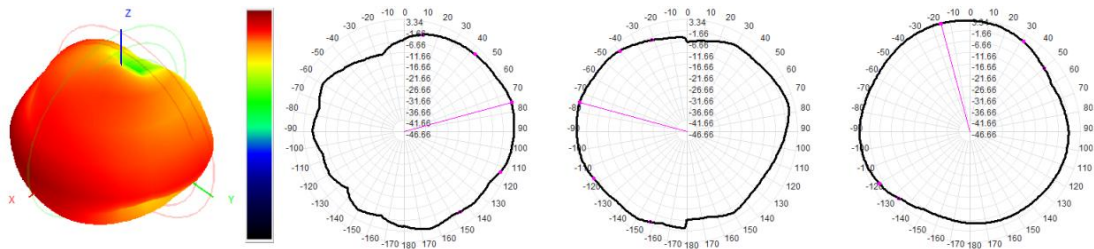
Frequency (MHz)	Gain (dBi)	Efficiency (%)
2400.0	2.60	58.87
2410.0	2.88	59.50
2420.0	3.07	61.70
2430.0	3.21	63.38
2440.0	3.33	64.94
2450.0	3.61	69.61
2460.0	3.65	71.93
2470.0	3.58	72.73
2480.0	3.60	71.47
2490.0	3.85	73.26
2500.0	3.73	69.92

6. Antenna pattern

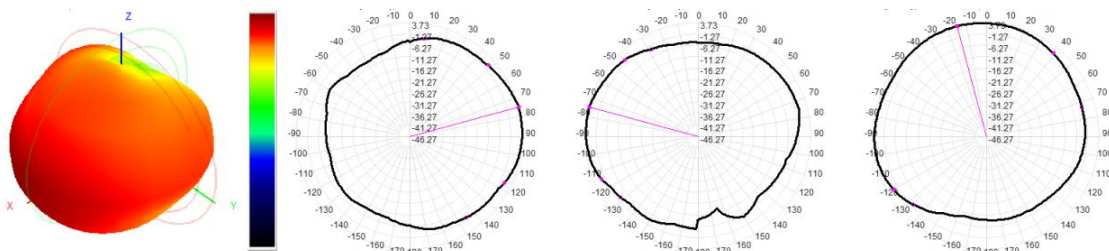
2400M 3D-E1-E2-H



2450M 3D-E1-E2-H



2500M 3D-E1-E2-H



7. The test environment:

BT Antenna

