



South Star Technology

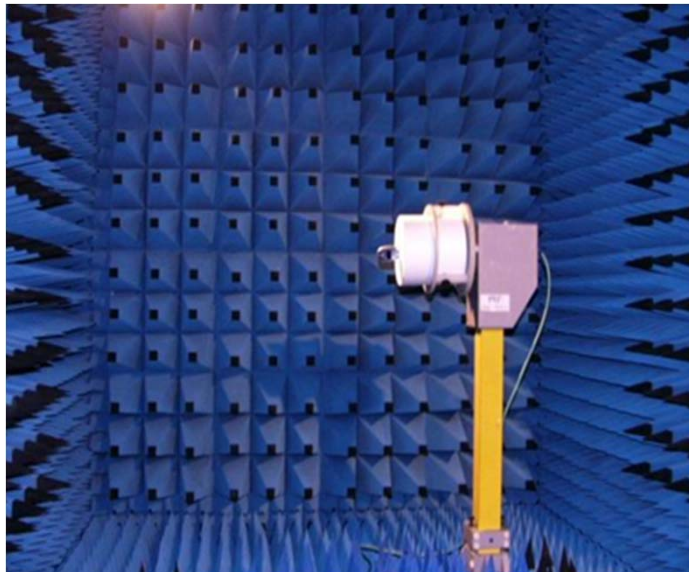
H18 Antenna SPECIFICATIONS FOR APPROVAL

Data:2014-11-27

Ver.1.0

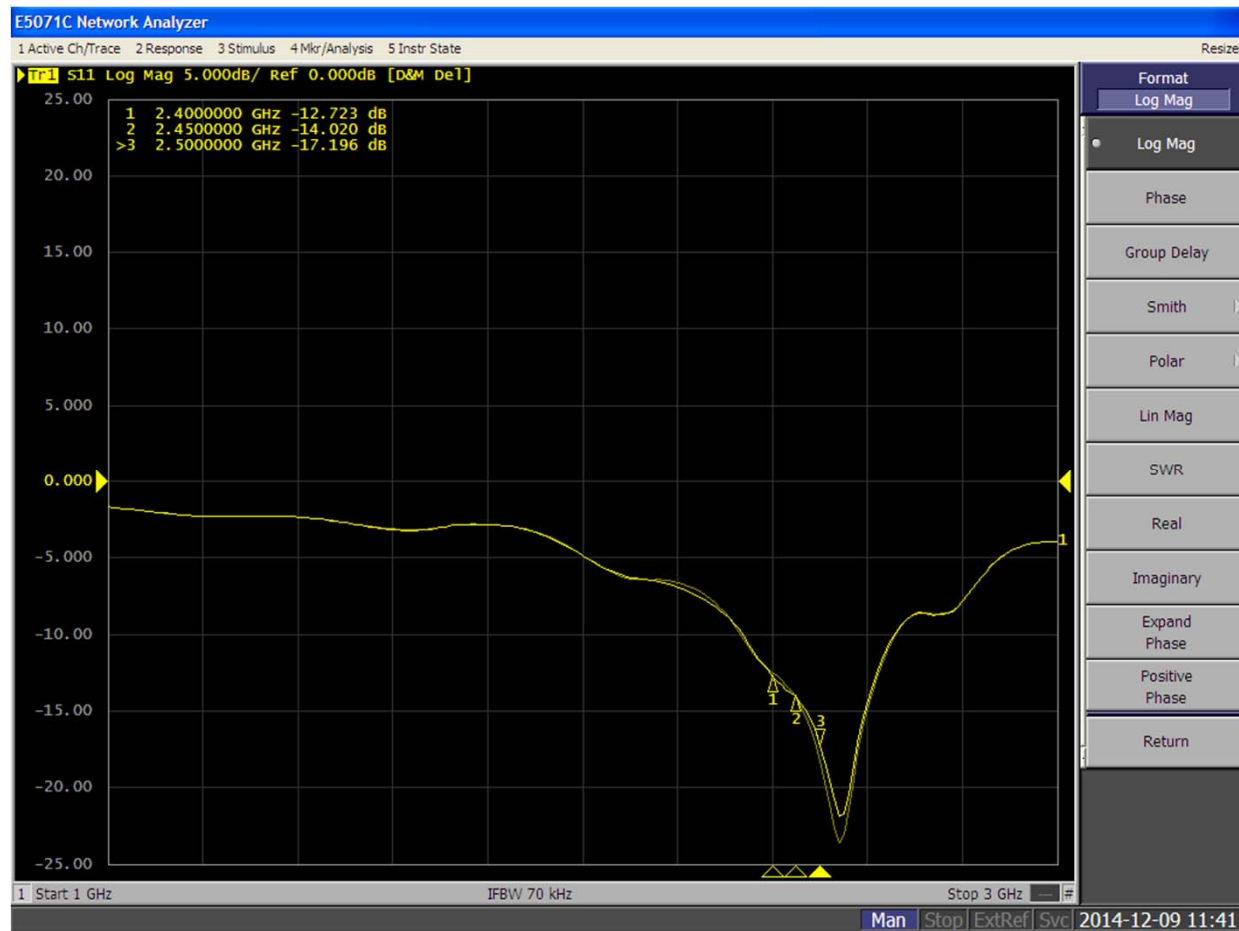
South Star Technology

Test Equipments

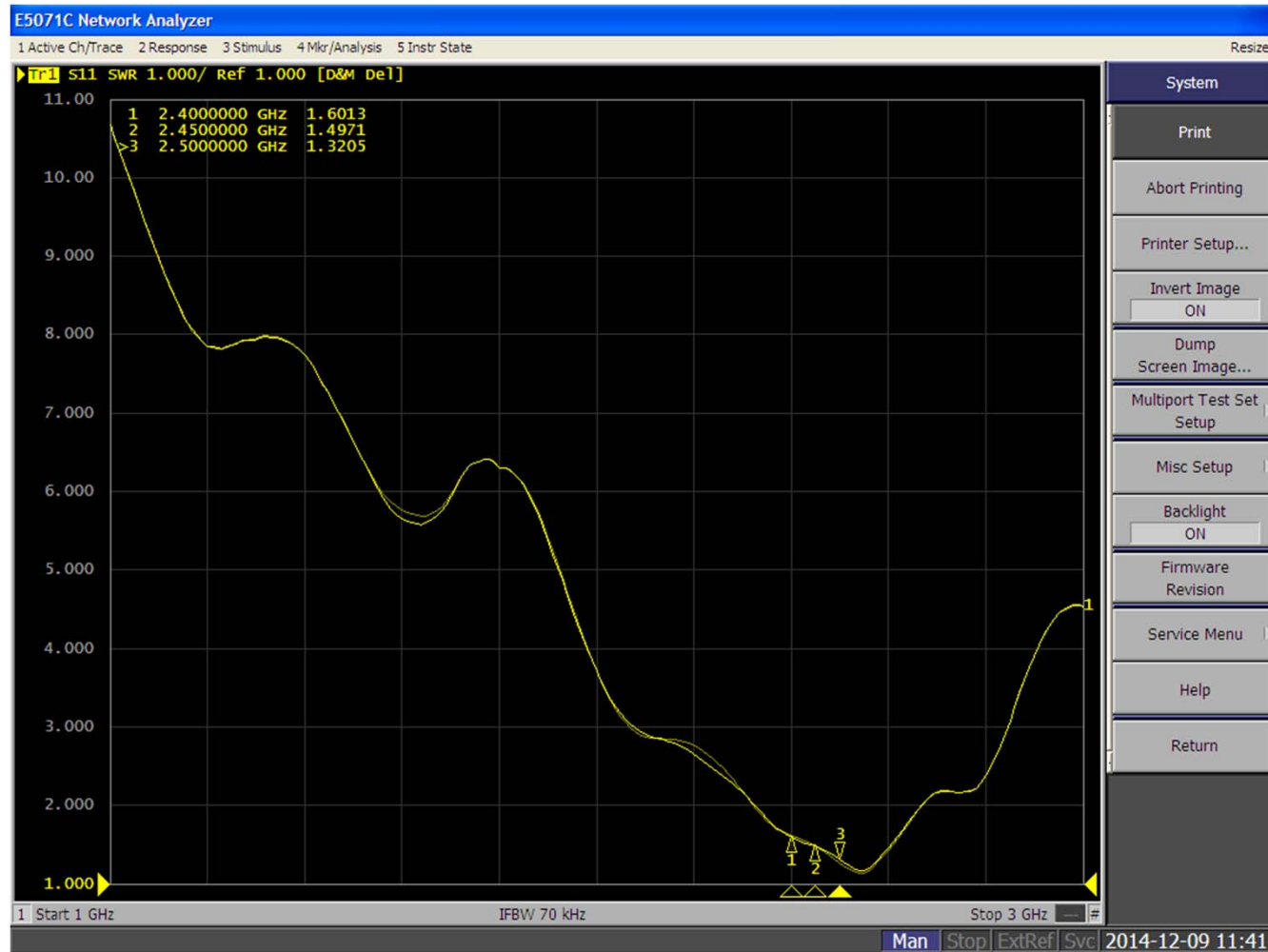


Strengthening Customer's Satisfaction

S11



VSWR



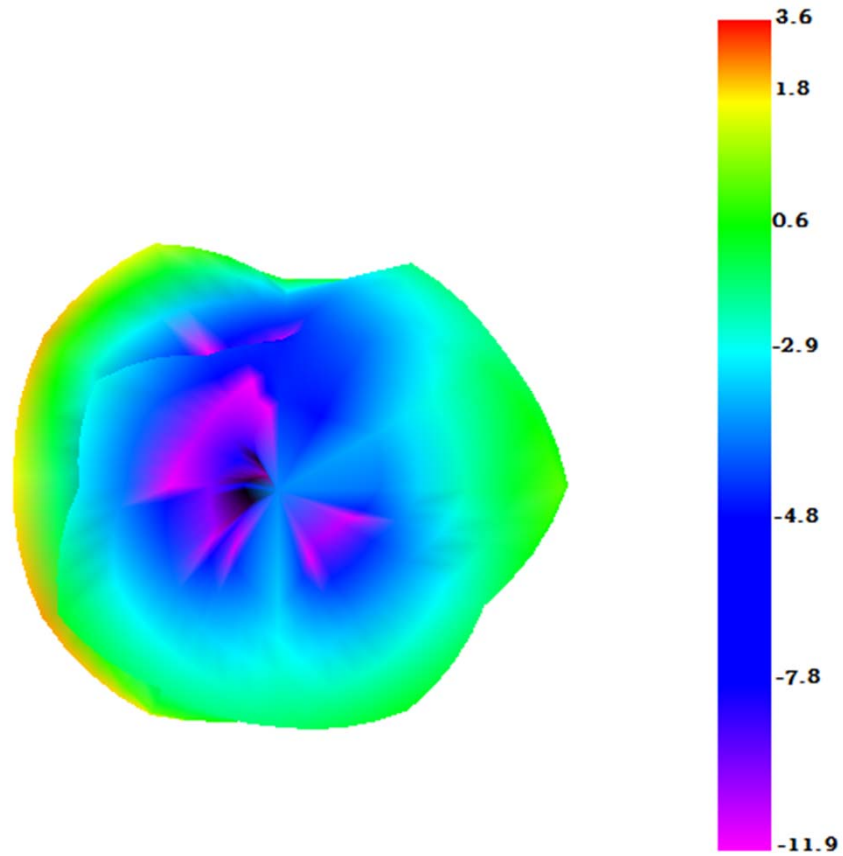


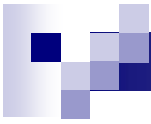
Antenna test data

Freq (MHz)	Effi (%)	Effi (dB)	Gain (dBi)
2400	62.18	-2.06	1.86
2410	63.02	-2.05	1.85
2420	63.97	-1.94	2.07
2430	64.22	-1.92	2.12
2440	67.54	-1.70	2.45
2450	68.37	-1.65	2.33
2460	68.62	-1.63	2.05
2470	67.41	-1.71	2.13
2480	66.77	-1.75	1.95
2490	65.96	-1.81	1.87
2500	64.46	-1.91	1.86

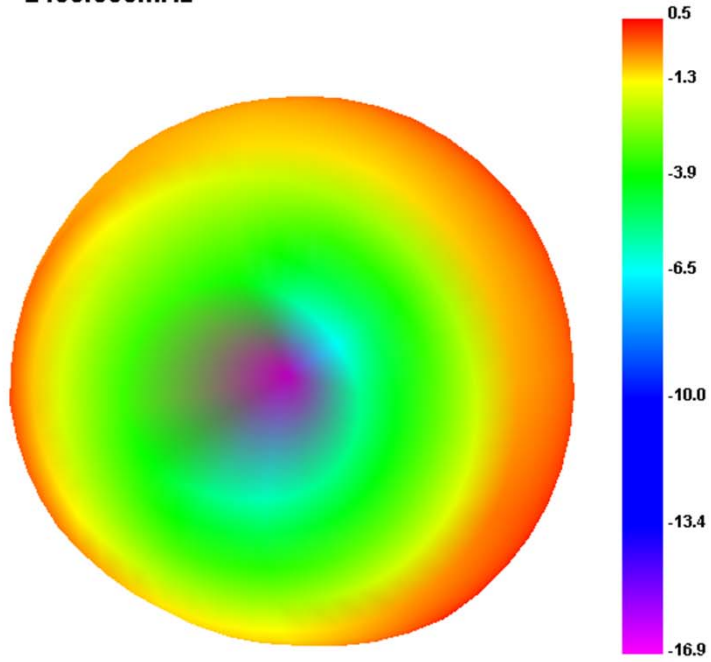
3D Picture

2400.000MHz





2450.000MHz



3D分析 2d分析

数据类型

综合数据

显示类型

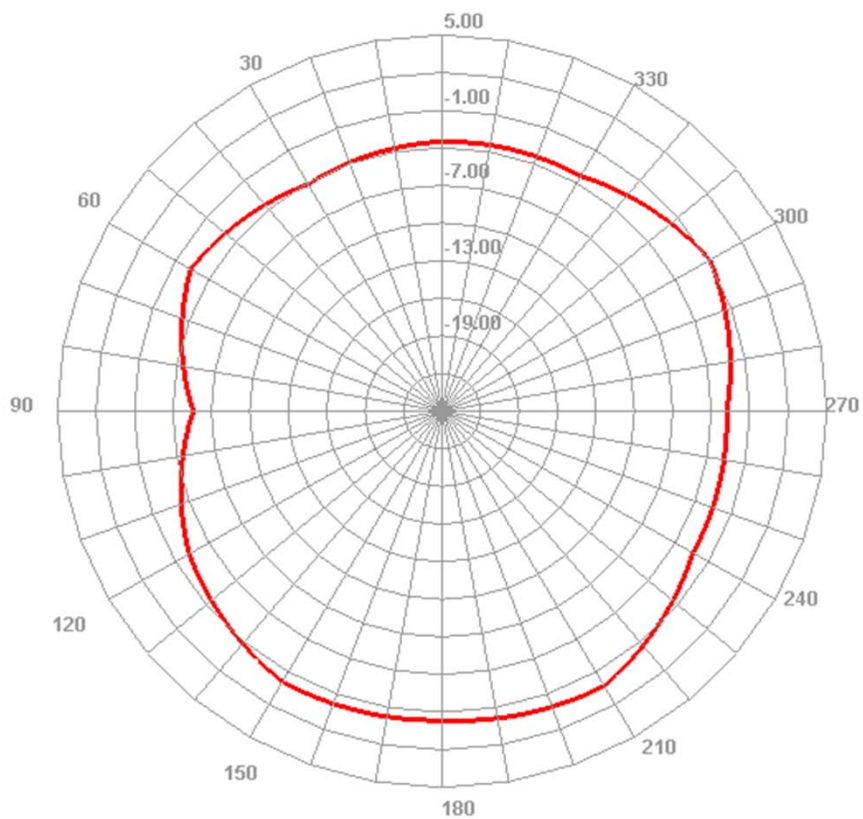
只显示画面

选择项目

2400.000MHz
2410.000MHz
2420.000MHz
2430.000MHz
2440.000MHz
2450.000MHz
2460.000MHz
2470.000MHz
2480.000MHz
2490.000MHz
2500.000MHz



2450.000MHz H



3D分析 | 2d分析

显示类型

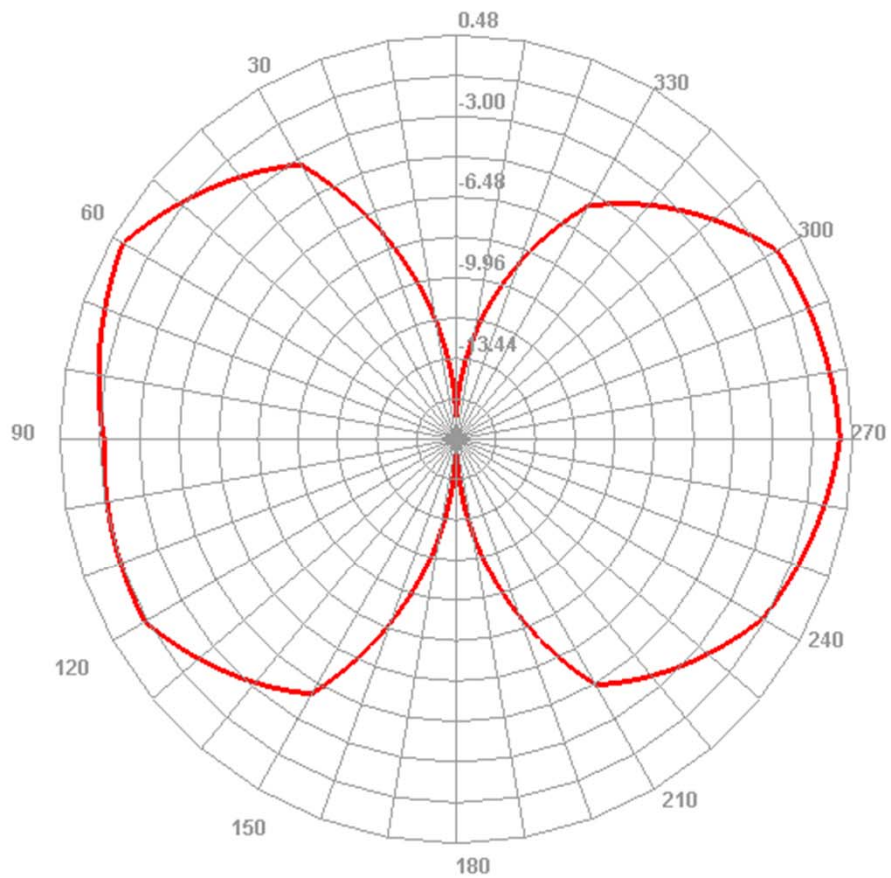
显示H面

选择项目

- 2400.000MHz
- 2410.000MHz
- 2420.000MHz
- 2430.000MHz
- 2440.000MHz
- 2450.000MHz**
- 2460.000MHz
- 2470.000MHz
- 2480.000MHz
- 2490.000MHz
- 2500.000MHz



2450.000MHz E1



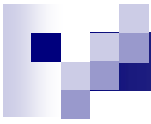
3D分析 | 2d分析

显示类型

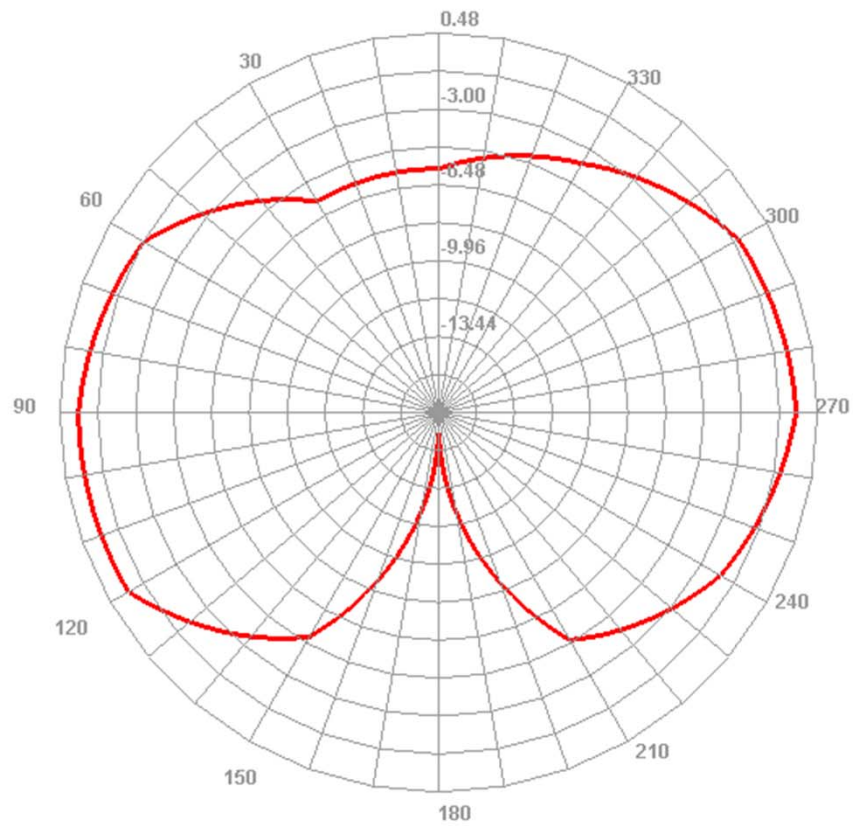
显示E1面

选择项目

- 2400.000MHz
- 2410.000MHz
- 2420.000MHz
- 2430.000MHz
- 2440.000MHz
- 2450.000MHz**
- 2460.000MHz
- 2470.000MHz
- 2480.000MHz
- 2490.000MHz
- 2500.000MHz



2450.000MHz E2



3D分析 | 2d分析

显示类型

显示E2面

选择项目

2400.000MHz
2410.000MHz
2420.000MHz
2430.000MHz
2440.000MHz
2450.000MHz
2460.000MHz
2470.000MHz
2480.000MHz
2490.000MHz
2500.000MHz

Drawing

