



WiFi 802.11b -Body Rear CH1 .....	2
WiFi 802.11b -Body Right CH1 .....	3
WiFi 802.11b -Body Top CH1 .....	4
WiFi 802.11b -Body Top CH6 .....	5
WiFi 802.11b -Body Top CH11 .....	6
WiFi 802.11b -Body Top CH11 repeat.....	7

Test Laboratory: Compliance Certification Services Inc.

Date: 8/24/2016

**WiFi 802.11b -Body Rear CH1**

Communication System: UID 0, IEEE 802.11b (0); Communication System Band: ISM 2.4GHz Band;  
 Frequency: 2412 MHz; Duty Cycle: 1:1

Medium parameters used:  $f = 2412 \text{ MHz}$ ;  $\sigma = 1.931 \text{ S/m}$ ;  $\epsilon_r = 51.775$ ;  $\rho = 1000 \text{ kg/m}^3$

Room Ambient Temperature: 22°C; Liquid Temperature: 21.5°C

Phantom section: Flat Section

Measurement Standard: DASYS (IEEE/IEC/ANSI C63.19-2007)

DASY Configuration:

- Probe: EX3DV4 - SN3798; ConvF(7.07, 7.07, 7.07); Calibrated: 7/27/2016;
- Sensor-Surface: 2mm (Mechanical Surface Detection)
- Electronics: DAE4 Sn1245; Calibrated: 7/26/2016
- Phantom: ELI v4.0; Type: QDOVA001BB; Serial: TP:xxxx
- DASYS 52.8.8(1222);
- SEMCAD X Version 14.6.10 (7331)

**WiFi/Body Bottom CH1/Area Scan (9x10x1):** Measurement grid: dx=12mm, dy=12mm

Maximum value of SAR (measured) = 0.215 W/kg

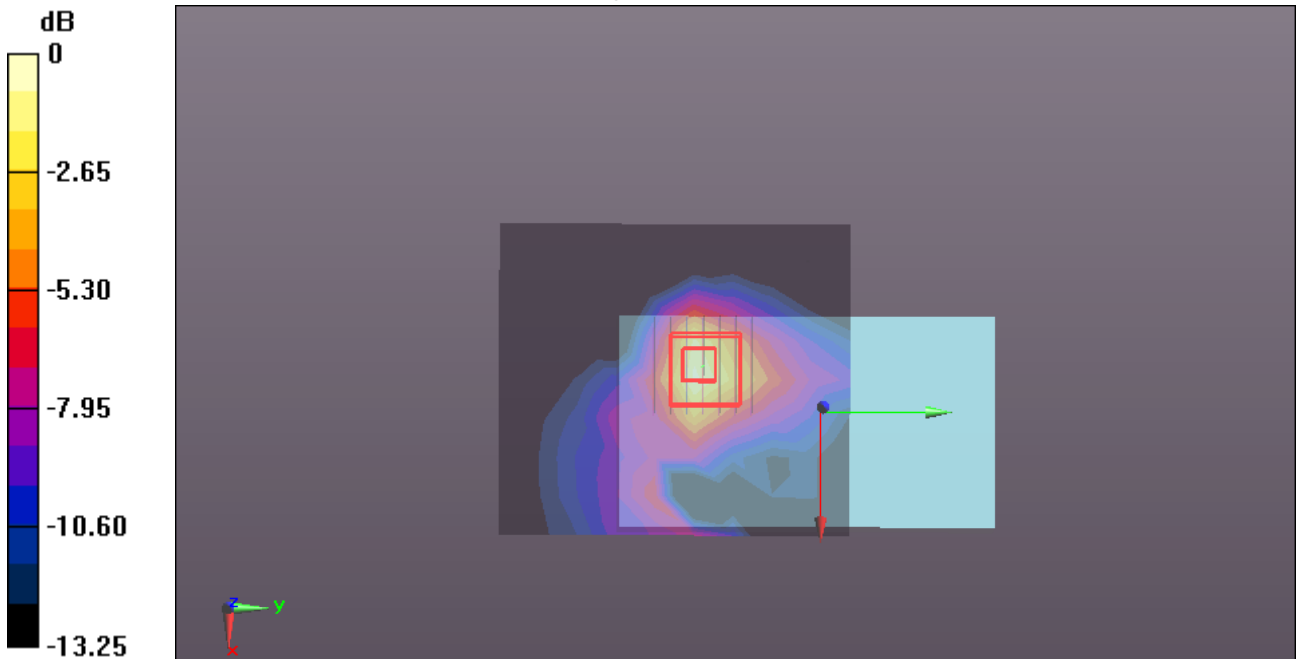
**WiFi/Body Bottom CH1/Zoom Scan (7x7x5)/Cube 0:** Measurement grid: dx=5mm, dy=5mm, dz=5mm

Reference Value = 3.516 V/m; Power Drift = -0.12 dB

Peak SAR (extrapolated) = 0.335 W/kg

**SAR(1 g) = 0.158 W/kg; SAR(10 g) = 0.072 W/kg**

Maximum value of SAR (measured) = 0.241 W/kg



0 dB = 0.241 W/kg = -6.18 dBW/kg

Test Laboratory: Compliance Certification Services Inc.

Date: 8/24/2016

**WiFi 802.11b -Body Right CH1**

Communication System: UID 0, IEEE 802.11b (0); Communication System Band: ISM 2.4GHz Band;

Frequency: 2412 MHz; Duty Cycle: 1:1

Medium parameters used:  $f = 2412 \text{ MHz}$ ;  $\sigma = 1.931 \text{ S/m}$ ;  $\epsilon_r = 51.775$ ;  $\rho = 1000 \text{ kg/m}^3$

Room Ambient Temperature: 22°C; Liquid Temperature: 21.5°C

Phantom section: Flat Section

Measurement Standard: DASYS (IEEE/IEC/ANSI C63.19-2007)

DASY Configuration:

- Probe: EX3DV4 - SN3798; ConvF(7.07, 7.07, 7.07); Calibrated: 7/27/2016;
- Sensor-Surface: 2mm (Mechanical Surface Detection)
- Electronics: DAE4 Sn1245; Calibrated: 7/26/2016
- Phantom: ELI v4.0; Type: QDOVA001BB; Serial: TP:xxxx
- DASYS 52.8.8(1222);
- SEMCAD X Version 14.6.10 (7331)

**WiFi/Body Right CH1/Area Scan (10x13x1):** Measurement grid: dx=12mm, dy=12mm

Maximum value of SAR (measured) = 0.623 W/kg

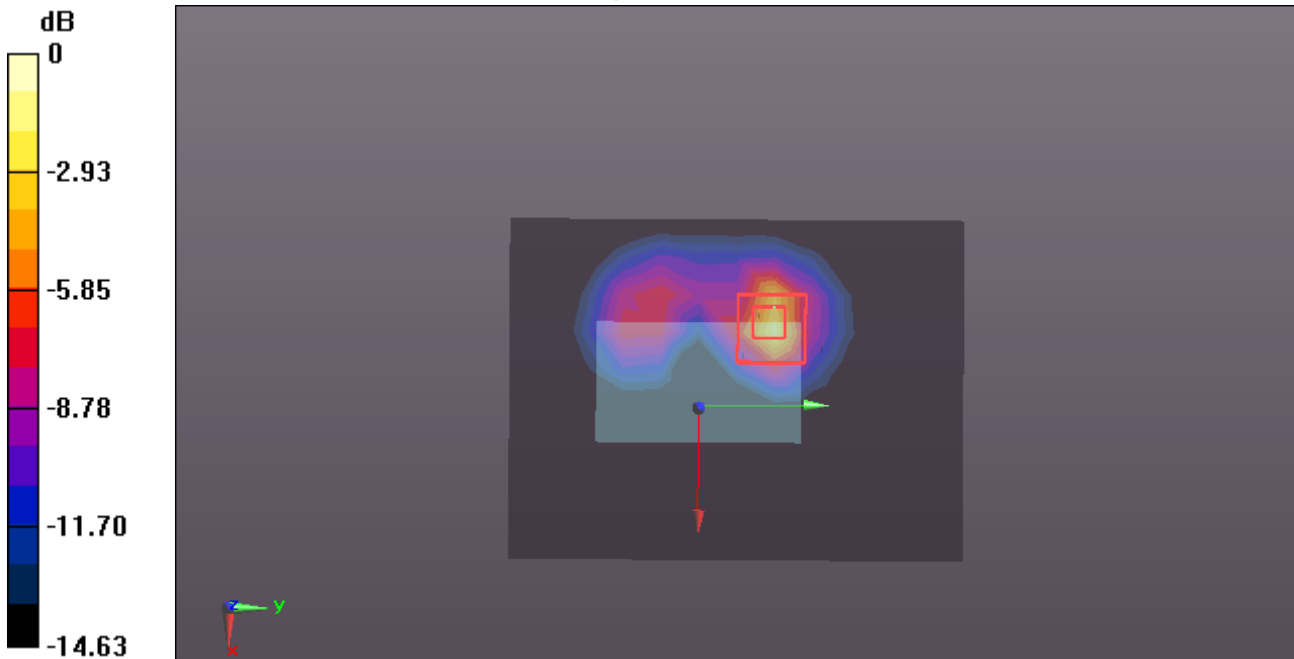
**WiFi/Body Right CH1/Zoom Scan (7x7x5)/Cube 0:** Measurement grid: dx=5mm, dy=5mm, dz=5mm

Reference Value = 3.197 V/m; Power Drift = -0.07 dB

Peak SAR (extrapolated) = 1.50 W/kg

**SAR(1 g) = 0.441 W/kg; SAR(10 g) = 0.164 W/kg**

Maximum value of SAR (measured) = 0.854 W/kg



0 dB = 0.854 W/kg = -0.69 dBW/kg

Test Laboratory: Compliance Certification Services Inc.

Date: 8/24/2016

**WiFi 802.11b -Body Top CH1**

Communication System: UID 0, IEEE 802.11b (0); Communication System Band: ISM 2.4GHz Band;  
 Frequency: 2412 MHz; Duty Cycle: 1:1

Medium parameters used:  $f = 2412 \text{ MHz}$ ;  $\sigma = 1.931 \text{ S/m}$ ;  $\epsilon_r = 51.775$ ;  $\rho = 1000 \text{ kg/m}^3$

Room Ambient Temperature: 22°C; Liquid Temperature: 21.5°C

Phantom section: Flat Section

Measurement Standard: DASYS (IEEE/IEC/ANSI C63.19-2007)

DASY Configuration:

- Probe: EX3DV4 - SN3798; ConvF(7.07, 7.07, 7.07); Calibrated: 7/27/2016;
- Sensor-Surface: 2mm (Mechanical Surface Detection)
- Electronics: DAE4 Sn1245; Calibrated: 7/26/2016
- Phantom: ELI v4.0; Type: QDOVA001BB; Serial: TP:xxxx
- DASYS 52.8.8(1222);
- SEMCAD X Version 14.6.10 (7331)

**WiFi/Body Top CH1/Area Scan (10x13x1):** Measurement grid: dx=12mm, dy=12mm

Maximum value of SAR (measured) = 1.65 W/kg

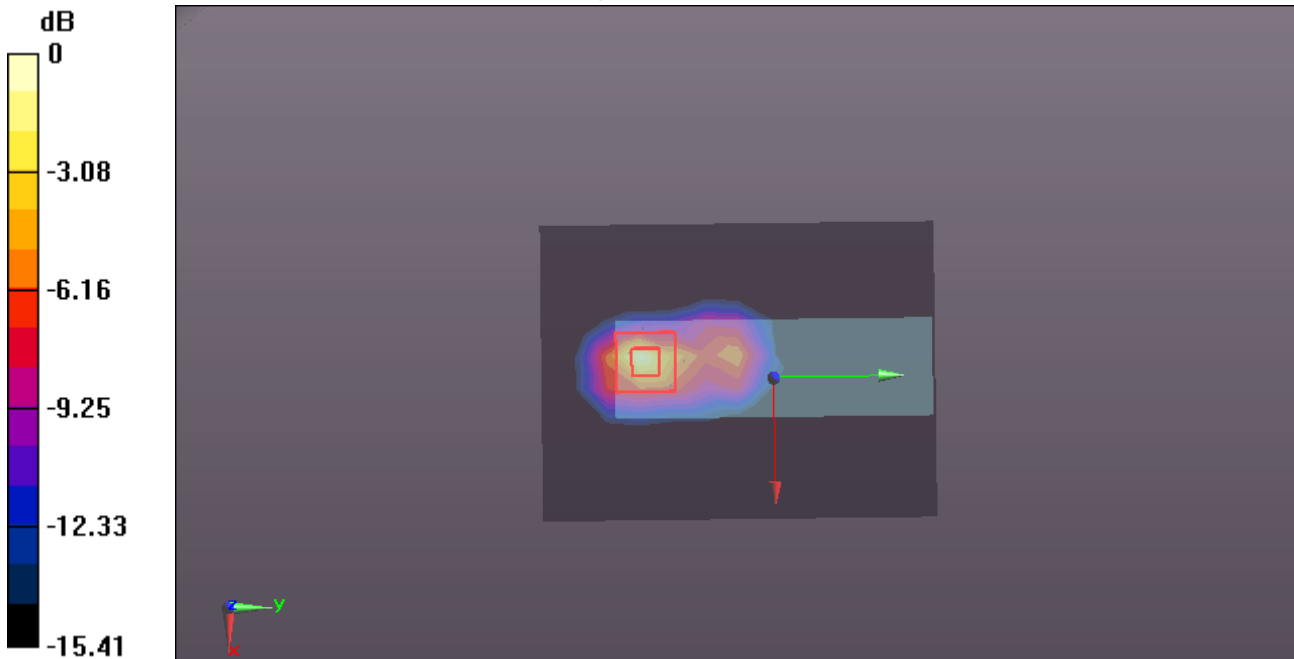
**WiFi/Body Top CH1/Zoom Scan (7x7x5)/Cube 0:** Measurement grid: dx=5mm, dy=5mm, dz=5mm

Reference Value = 6.159 V/m; Power Drift = 0.02 dB

Peak SAR (extrapolated) = 2.51 W/kg

**SAR(1 g) = 1.01 W/kg; SAR(10 g) = 0.398 W/kg**

Maximum value of SAR (measured) = 1.79 W/kg



0 dB = 1.79 W/kg = 2.53 dBW/kg

Test Laboratory: Compliance Certification Services Inc.

Date: 8/24/2016

**WiFi 802.11b -Body Top CH6**

Communication System: UID 0, IEEE 802.11b (0); Communication System Band: ISM 2.4GHz Band;  
 Frequency: 2437 MHz; Duty Cycle: 1:1

Medium parameters used:  $f = 2437 \text{ MHz}$ ;  $\sigma = 1.964 \text{ S/m}$ ;  $\epsilon_r = 51.722$ ;  $\rho = 1000 \text{ kg/m}^3$

Room Ambient Temperature: 22°C; Liquid Temperature: 21.5°C

Phantom section: Flat Section

Measurement Standard: DASYS (IEEE/IEC/ANSI C63.19-2007)

DASY Configuration:

- Probe: EX3DV4 - SN3798; ConvF(7.07, 7.07, 7.07); Calibrated: 7/27/2016;
- Sensor-Surface: 2mm (Mechanical Surface Detection)
- Electronics: DAE4 Sn1245; Calibrated: 7/26/2016
- Phantom: ELI v4.0; Type: QDOVA001BB; Serial: TP:xxxx
- DASYS 52.8.8(1222);
- SEMCAD X Version 14.6.10 (7331)

**WiFi/Body Top CH6/Area Scan (10x13x1):** Measurement grid: dx=12mm, dy=12mm

Maximum value of SAR (measured) = 1.74 W/kg

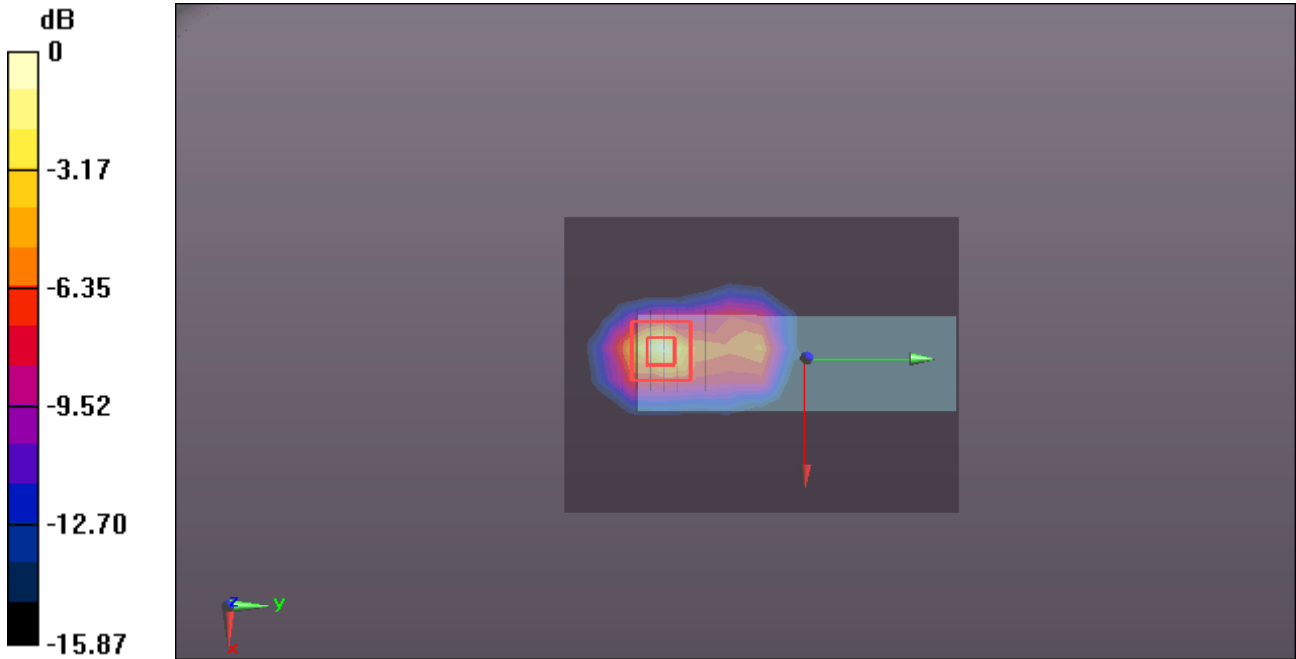
**WiFi/Body Top CH6/Zoom Scan (7x7x5)/Cube 0:** Measurement grid: dx=5mm, dy=5mm, dz=5mm

Reference Value = 4.097 V/m; Power Drift = 0.04 dB

Peak SAR (extrapolated) = 2.42 W/kg

**SAR(1 g) = 0.912 W/kg; SAR(10 g) = 0.401 W/kg**

Maximum value of SAR (measured) = 1.76 W/kg



0 dB = 1.76 W/kg = 2.46 dBW/kg

Test Laboratory: Compliance Certification Services Inc.

Date: 8/24/2016

**WiFi 802.11b -Body Top CH11**

Communication System: UID 0, IEEE 802.11b (0); Communication System Band: ISM 2.4GHz Band;

Frequency: 2462 MHz; Duty Cycle: 1:1

Medium parameters used:  $f = 2462 \text{ MHz}$ ;  $\sigma = 1.992 \text{ S/m}$ ;  $\epsilon_r = 51.635$ ;  $\rho = 1000 \text{ kg/m}^3$

Room Ambient Temperature: 22°C; Liquid Temperature: 21.5°C

Phantom section: Flat Section

Measurement Standard: DASYS (IEEE/IEC/ANSI C63.19-2007)

DASY Configuration:

- Probe: EX3DV4 - SN3798; ConvF(7.07, 7.07, 7.07); Calibrated: 7/27/2016;
- Sensor-Surface: 2mm (Mechanical Surface Detection)
- Electronics: DAE4 Sn1245; Calibrated: 7/26/2016
- Phantom: ELI v4.0; Type: QDOVA001BB; Serial: TP:xxxx
- DASYS 52.8.8(1222);
- SEMCAD X Version 14.6.10 (7331)

**WiFi/Body Top CH11/Area Scan (10x13x1):** Measurement grid: dx=12mm, dy=12mm

Maximum value of SAR (measured) = 1.54 W/kg

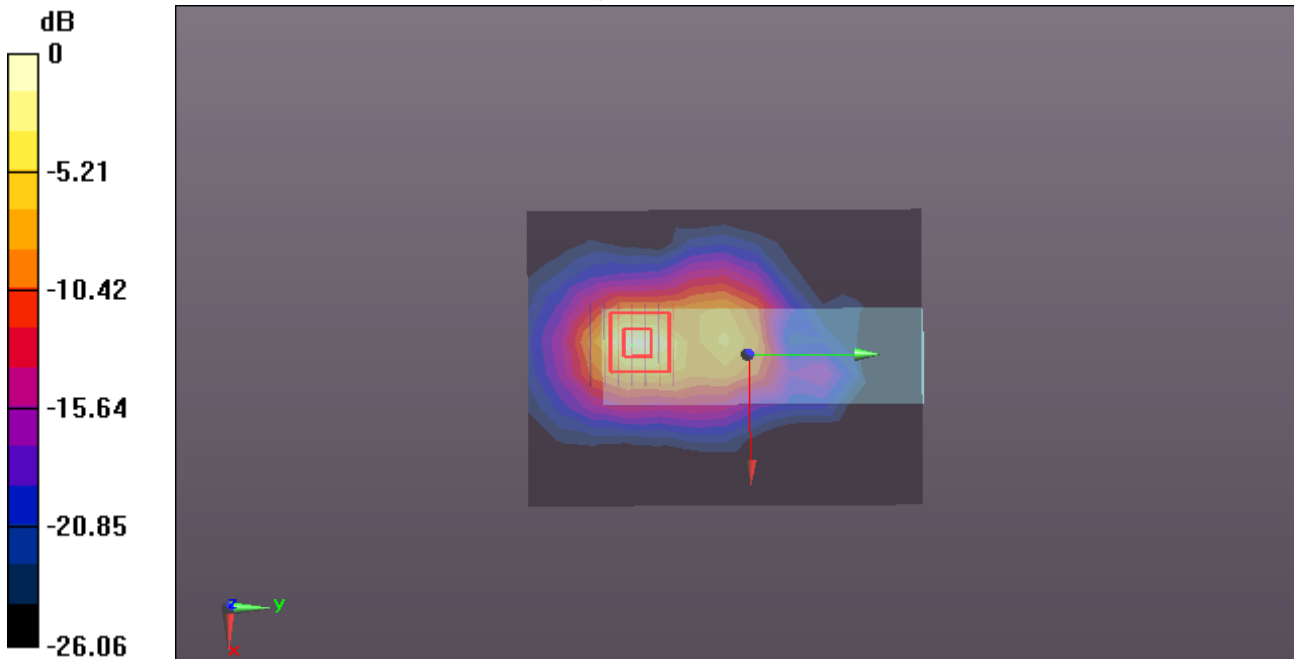
**WiFi/Body Top CH11/Zoom Scan (7x7x5)/Cube 0:** Measurement grid: dx=5mm, dy=5mm, dz=5mm

Reference Value = 9.091 V/m; Power Drift = 0.06 dB

Peak SAR (extrapolated) = 2.45 W/kg

**SAR(1 g) = 0.943 W/kg; SAR(10 g) = 0.409 W/kg**

Maximum value of SAR (measured) = 1.71 W/kg



0 dB = 1.71 W/kg = 2.33 dBW/kg

Test Laboratory: Compliance Certification Services Inc.

Date: 8/24/2016

**WiFi 802.11b -Body Top CH11 repeat**

Communication System: UID 0, IEEE 802.11b (0); Communication System Band: ISM 2.4GHz Band;

Frequency: 2462 MHz; Duty Cycle: 1:1

Medium parameters used:  $f = 2462 \text{ MHz}$ ;  $\sigma = 1.992 \text{ S/m}$ ;  $\epsilon_r = 51.635$ ;  $\rho = 1000 \text{ kg/m}^3$

Room Ambient Temperature: 22°C; Liquid Temperature: 21.5°C

Phantom section: Flat Section

Measurement Standard: DASYS (IEEE/IEC/ANSI C63.19-2007)

DASY Configuration:

- Probe: EX3DV4 - SN3798; ConvF(7.07, 7.07, 7.07); Calibrated: 7/27/2016;
- Sensor-Surface: 2mm (Mechanical Surface Detection)
- Electronics: DAE4 Sn1245; Calibrated: 7/26/2016
- Phantom: ELI v4.0; Type: QDOVA001BB; Serial: TP:xxxx
- DASYS 52.8.8(1222);
- SEMCAD X Version 14.6.10 (7331)

**WiFi/Body Top CH11 repeat/Area Scan (10x13x1):** Measurement grid: dx=12mm, dy=12mm

Maximum value of SAR (measured) = 1.71 W/kg

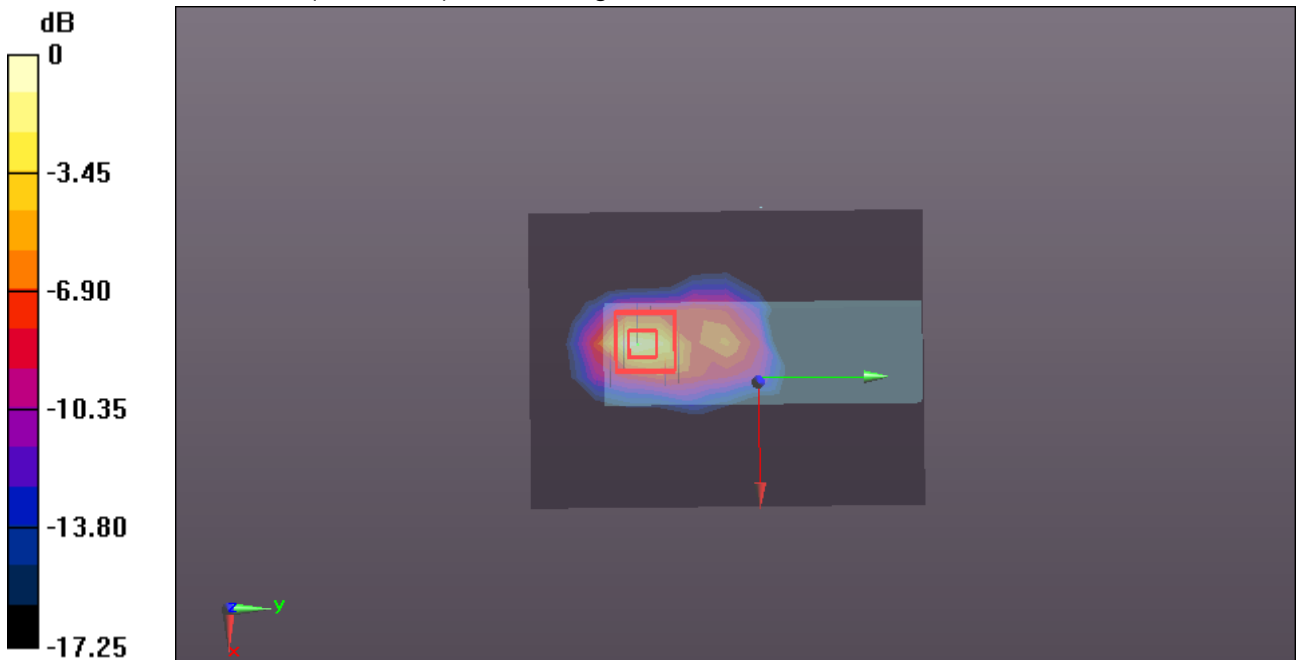
**WiFi/Body Top CH11 repeat/Zoom Scan (7x7x5)/Cube 0:** Measurement grid: dx=5mm, dy=5mm, dz=5mm

Reference Value = 9.522 V/m; Power Drift = -0.10 dB

Peak SAR (extrapolated) = 2.70 W/kg

**SAR(1 g) = 0.938 W/kg; SAR(10 g) = 0.425 W/kg**

Maximum value of SAR (measured) = 1.94 W/kg



0 dB = 1.94 W/kg = 2.88 dBW/kg