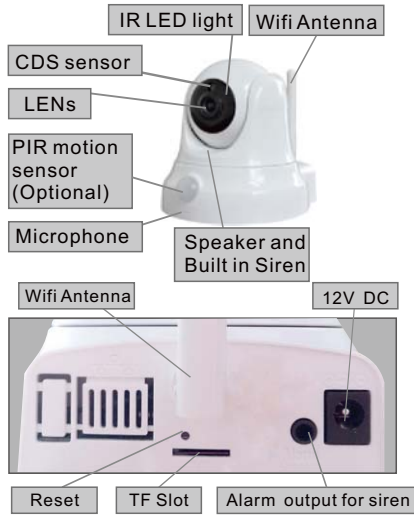


# Quick Guide

V150202-1

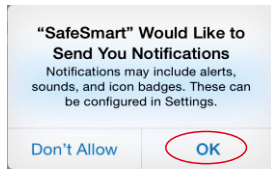
## 1. Interface Introduction



## 2. Install the App

Search and download the App 'SafeSmart' from 'Google Play Store' or 'App Store', and install on smart phone.

Remark: When open the app, you will receive a tip. Please click 'OK' to allow the notifications, otherwise, you cannot receive any notifications.



①

## 3. Connect the Device

**STEP 1:** Insert TF memory card, connect power supply. It takes 30 seconds to start device.

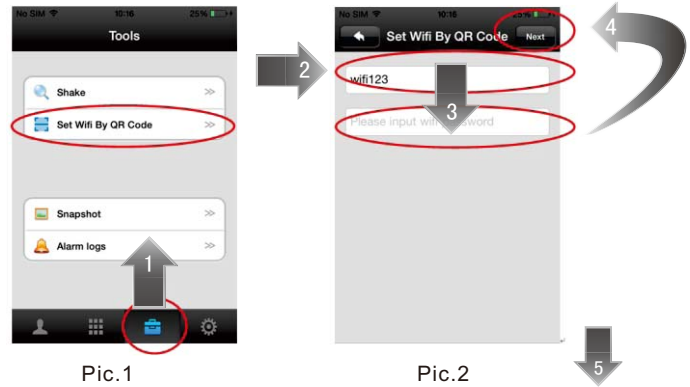
**STEP 2:** Open the app 'SafeSmart', choose 'Register by email', and follow the tips to complete the registration.

**Special Notice:** Account name and password must be English and number.

**Note:** The email address will be used as login name and the safe email to find the login password. The password is login password, not email password.

**STEP 3:** Wi-Fi setting. Connect your phone to the Wi-Fi which the device will be connected. Click 'Tools' and choose 'Set Wifi By QR Code' (Pic.1). Select the Wi-Fi and input the Wi-Fi password, and then click 'NEXT' to generate a QR code (Pic.2).

**Special Notice:** Wifi SSID should be in English and number, or user can't set Wi-Fi by QR code.



②

## 4. View Interface



Pic.8

## 5. Date and Time

Click [User Icon] button, click the blank of the device name and click 'Settings' (Pic.9), press 'Date and Time' (Pic.10). Press 'Apply', the device will synchronize the same date and time with the mobile phone (Pic.11).



Pic.3

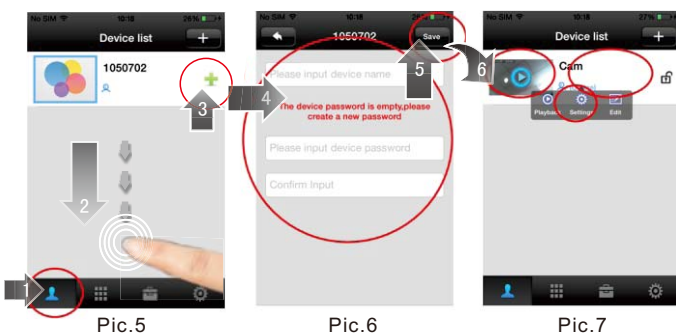
Pic.4

**STEP 4:** Aim the camera at the QR code in 10-15cm distance (Pic.3) (iPad and tablet are 20cm). Once hear the sound "DING", click 'Heard', it shows 'Setting Success', device is connected to the Wi-Fi.

**Remark:** The function 'Set Wifi by QR Code' is only available to the first use. If fail to scan the QR code, press the Reset button for 5 seconds and you will hear a voice of 'King', wait 30 seconds to restart the device and retry.

**STEP 5:** Add device. Press the 'Device list' button, put finger to the blank list area and slide down to refresh. When device searched, click the green symbol '+' (Pic.5) in the device name, input the device name and password, and click 'Save' to finish adding the new device (Pic.6). Click the icon [Camera Icon] to enter the view interface (Pic.7).

**Remark:** The factory default password is empty. When adding device at the first time, it requires to input a preset password. The preset password will be needed to add to other mobile phone.



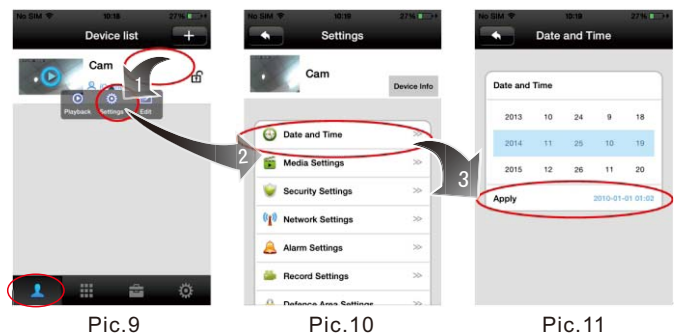
Pic.5

Pic.6

Pic.7

③

④



Pic.9

Pic.10

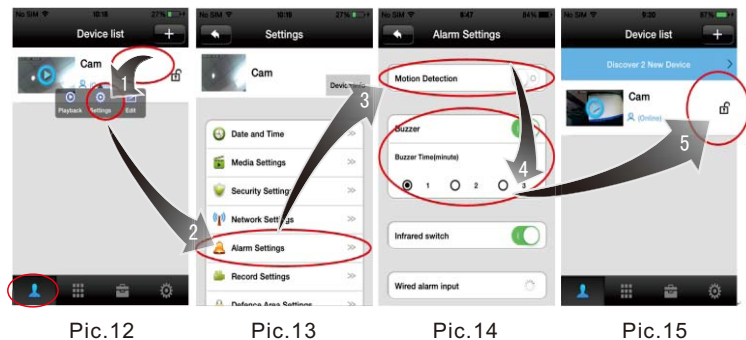
Pic.11

## 6. Defence

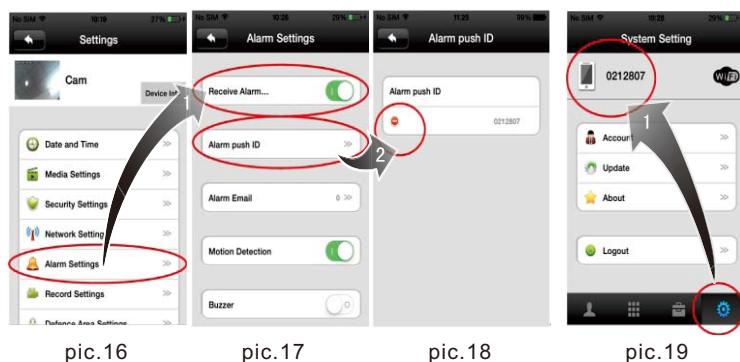
**STEP 1:** Click button, click the blank of the device name and click 'Settings' (Pic.12). Press 'Alarm Settings'(Pic13). For with built-in PIR model, turn on the 'PIR detection'. For without built-in PIR model, turn on the 'Motion Detection' and open the 'Buzzer' (Pic 14). When the alarm is triggered, the device will ring.

**STEP 2:** Defence setup. In the 'Device list', click the icon (Disable) and (Enable) to switch the defence status(Pic. 15).

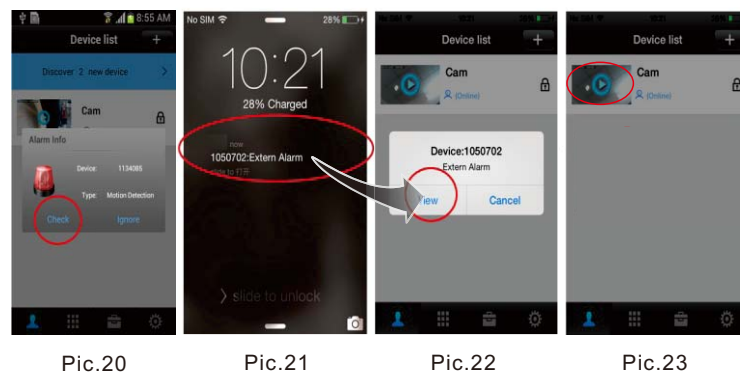
**Note:** If one smart phone disable the defence, all smart phones cannot receive the alarm.



settings' and open 'Receive Alarm'. The Push ID is showing in 'System Setting' (Pic.19).



**STEP 2:** When the alarm is triggered, there will be a notification received on the mobile phone screen. For android, click 'Check' in the notification and enter into the view interface (Pic.20). For IOS, slide the notification to open (Pic.21), press 'View'(Pic.22) or press to enter the view interface(Pic.23).



## 7. Push Notification Alarm

**STEP 1:** Turn on the Push function. Click button, click the blank in the device name and click 'Settings' , enter 'Alarm Settings' (Pic. 16), Turn on the 'Receive Alarm' (Pic. 17).

**Note:** If the numbers of 'Alarm push ID' reach the limit (Each device can push to Max 5 account IDs.), the Push function cannot activate. Click the 'Alarm push ID', tap to delete the unused ID (Pic.18). If delete the using ID accidentally, user should use the deleted phone to open app and press 'settings' - 'Alarm

⑤

**Special Notice:** For IOS, after viewing, user must press button, otherwise user can't receive push notification next time.

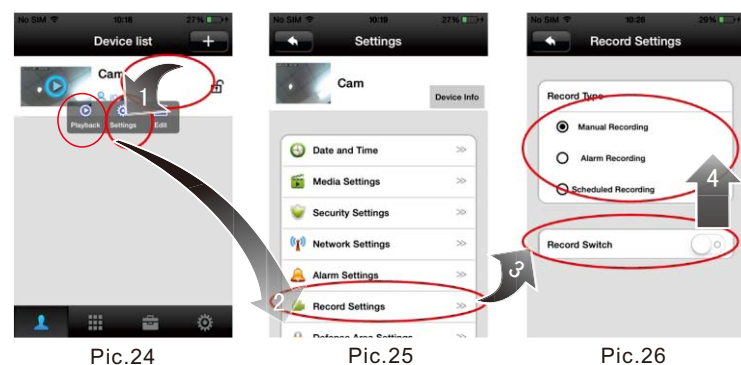
**Special Notice:** User must keep the app running at phone's background, user can't force to stop the app in phone's application manager, otherwise phone can't receive push notification ring.

⑥

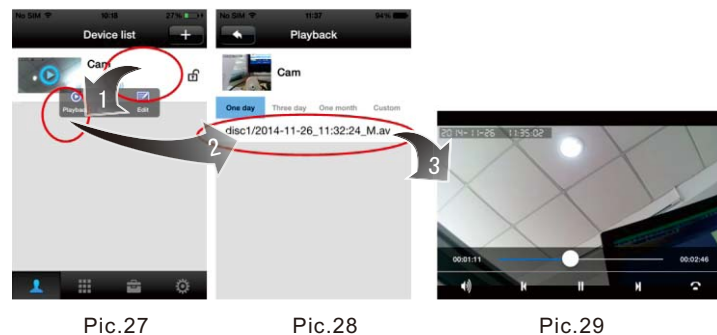
## 8. Video Record and Playback

**STEP 1:** Start recording. Insert the TF memory card (DO NOT insert or remove TF card when device is power on). Click button, click the blank of the device name and click 'Settings' (Pic.24) and choose 'Record Settings' (Pic.25). Press to activate the 'Record Switch' (Pic.26). User can choose 'Manual Recording', 'Alarm Recording', 'Scheduled Recording'. Recommend using the 'Alarm Recording', it will only start the recording when people press the call button.

**Remark:** If the 'Record Switch' cannot be activated, please take out the TF memory card, format it in the PC, and then insert it back to the device.



**STEP 2:** Playback. Click button, click the blank of the device name and click 'Playback' (Pic.27). Select the date and click (Pic 28) to view the video playback (Pic 29).



## FAQ

**Q1:** Why I can't receive push notification Alarm on my phone?

- A:**
- 1, Make sure app's 'Device->Settings->Alarm Settings->Receive alarm message' is enable.
  - 2, Make sure the app is running at phone's background, and you haven't force stopped the app in phone's application manager.
  - 3, For iphone and ipad, make sure you had pressed "Hangup" button after your last viewing before you close phone's screen.
  - 4, Make sure you had chosen 'OK' to allow app to send you notification when you first install the app. Or check your phone's notification center to enable receiving app's notification.

**Q2:** Why can't hear the voice clearly, voice delay, halt or no sound.

- A:** Possibly because network not good and unstable. Choose the 'LD' mode or change a better network.

⑦

⑧

This device complies with part 15 of the FCC Rules. Operation is subject to the following two conditions: (1) This device may not cause harmful interference, and (2) this device must accept any interference received, including interference that may cause undesired operation.

Any Changes or modifications not expressly approved by the party responsible for compliance could void the user's authority to operate the equipment.