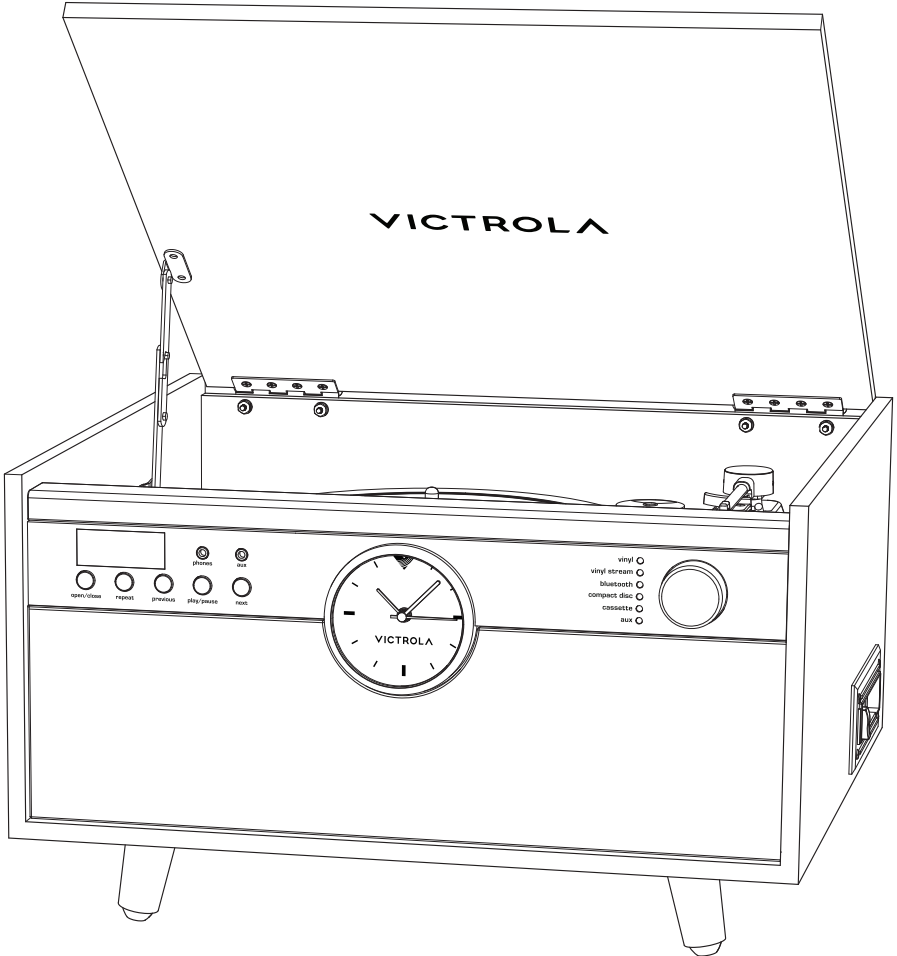


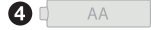
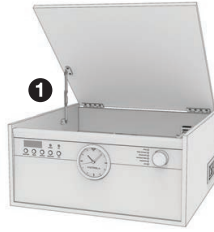
VICTROLA



1 UNPACK

LOCATE THE FOLLOWING ITEMS

- 1 Music center
- 2 Feet (x4)
- 3 Power adapter
- 4 Clock battery
- 5* Legs (x4)

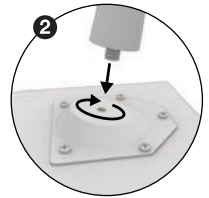


**Included with the Century Signature+ (VTA-835SB) or sold separately.*

2 PREPARE MUSIC CENTER

INSTALLING FEET / LEGS

- 1 Carefully turn music center upside down while holding lid closed.
- 2 Insert feet / legs into the 4 corner brackets. Rotate clockwise until tightened.
- 3 Carefully turn music center right side up while holding lid closed.



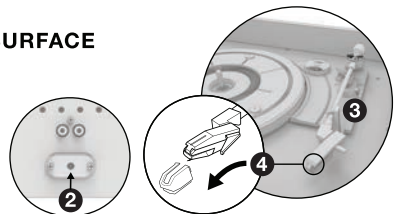
OPENING AND CLOSING THE LID

- 1 **OPEN:** Raise the lid to the fully open position. Lightly pull the hinge forward and gently lower the lid until the hinge is latched.
- 2 **CLOSE:** Raise the lid slightly and lightly push the center of the hinge to unlatch. Gently Lower lid.



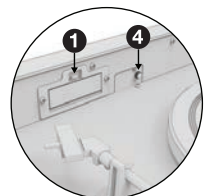
PLACE MUSIC CENTER ON A FLAT AND LEVEL SURFACE

- 1 Remove all packaging materials.
- 2 Plug in power adapter.
- 3 Remove tonearm twist tie.
- 4 Remove tape and clear stylus cover.



PREPARE CLOCK

- 1 Locate the clock battery compartment behind the clock face.
- 2 Open the compartment and install the single AA battery.
- 3 Close the clock battery compartment.
- 4 Adjust clock time by rotating dial.



3 GETTING STARTED

MULTI-FUNCTION KNOB

❶ Press and hold to power ON / OFF.

❷ Single press to switch modes:

VINYL

VINYLSTREAM™ (BLUETOOTH OUTPUT)

BLUETOOTH (INPUT)

COMPACT DISC

CASSETTE

AUX

❸ Rotate knob to adjust volume.



**MULTI-FUNCTION
KNOB**

4 PLAYING A RECORD

VINYL MODE - INTERNAL SPEAKERS / RCA / HEADPHONES:

❶ Enter VINYL mode, the volume of the internal speakers is controlled by rotating the multi-function knob. *For RCA / Headphone output information, see section 9.*

VINYLSTREAM MODE - PAIR BLUETOOTH SPEAKER OR HEADPHONES:

❶ Enter VINYLSTREAM (Bluetooth output) mode, the music center will automatically enter pairing mode. LED: Flashes white.

❷ Make sure your Bluetooth device is in pairing mode.

❸ Music center will automatically pair to your Bluetooth device.

❹ Once paired, the LED will turn solid white.

Note: Volume is controlled by Bluetooth device.

BASIC OPERATION

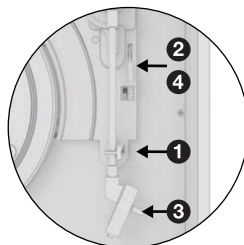
❶ Unlatch the tonearm.

❷ Raise the tonearm using the lift lever.

❸ Use the finger lift to align the stylus over the record.

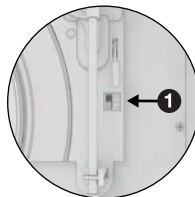
❹ Lower the tonearm using the lift lever to begin playing.

Note: At the end of the record, music center will automatically stop spinning. Use the lift lever to return the tonearm to the resting position.



ADJUSTING RECORD SPEED

- 1 Use the speed switch next to tonearm to adjust the record speed between **33 1/3 RPM (default)**, **45 RPM**, and **78 RPM**.



PLAYING A 7" RECORD

- 1 Locate the **45 RPM** adapter.
- 2 Place the adapter over the center spindle.
- 3 Select correct speed.
- 4 Place record over adapter, begin playback.



5 BLUETOOTH MODE

BLUETOOTH MODE - PAIR BLUETOOTH DEVICE:

- 1 Enter BLUETOOTH mode, the music center will automatically enter pairing mode. LED: Flashes white.
- 2 On your device, turn on Bluetooth and select "**Victrola Century Signature**" in the available device list.
- 3 Once paired, the LED will turn solid white.

*Note: Most devices support the use of the music center's **play/pause**, **previous**, and **next** buttons.*

6 PLAYING A CD

BASIC OPERATION

- 1 Enter COMPACT DISC mode.
- 2 Press the **open/close** button to open the CD tray. Insert a CD into tray and press open/close to close. *Playback will automatically begin.*
- 3 Press the **play/pause** button to start and stop the CD.
- 4 Use the **previous** and **next** buttons to change tracks. Press and hold the **previous** and **next** buttons to rewind and fast forward.



REPEAT / SHUFFLE

- 1 Press the **repeat** button to cycle through different CD modes:
REP 1: Repeats a single track
REP ALL: Repeats entire CD
RAN: Shuffles CD tracks

7 PLAYING A CASSETTE

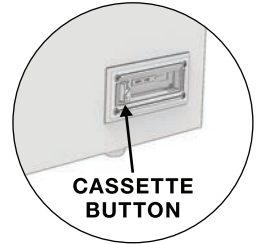
BASIC OPERATION

- 1 Enter CASSETTE mode.
- 2 Insert cassette, playback will automatically begin.

CASSETTE BUTTON

- 1 Press halfway down to fast forward.
Press again lightly to resume playback.
- 2 Press down all the way to end playback and eject tape.

Note: To rewind a side, eject and flip the tape to the other side and fast forward.



8 PLAYING AN EXTERNAL DEVICE (AUX)

BASIC OPERATION

- 1 Enter AUX mode.
- 2 Connect an external device to the 3.5mm **aux** jack on the front of the music center and begin playback on external device.

*Note: Most devices support the use of the music center's **play/pause**, **previous**, and **next** buttons.*

9 RCA & HEADPHONE OUTPUT

RCA OUTPUT

- 1 Connect the music center to external speakers using an RCA cable (not included).
RED PLUG - Insert into the **RED (RIGHT) JACK**
WHITE PLUG - Insert into the **WHITE (LEFT) JACK**
- 2 Lower volume of the internal speakers and control volume from the external speakers.

HEADPHONE OUTPUT

- 1 Use the **phones** jack on the front of the music center to connect headphones / earbuds.
Lower the volume before connecting headphones and increase as needed.

REPLACING THE STYLUS

REMOVING THE STYLUS FROM THE TONEARM:

- 1 Place your fingers at the tip of the stylus and push down to the direction “A”. *WARNING: When applying force to stylus, too much may damage or break the cartridge.*
- 2 Pull the stylus out toward the direction “B”.

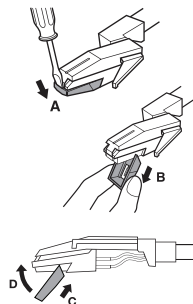
INSTALLING THE STYLUS: (Replacement Stylus # ITNP-LC1)

- 1 Hold the tip of the stylus and insert the other edge by pressing toward direction “C”.
- 2 Push the stylus up toward direction “D” until it locks at the tip.

CAUTION:

- Do not bend or force the stylus into the cartridge.
- Do not touch the stylus needle to avoid injury to your hand.
- Turn off the unit's power before you replace the stylus.
- Keep out of reach of children.

NOTE: The stylus should last about 300 hours under normal use. It is recommended that the stylus be replaced as soon as you notice a change in sound quality. 78 RPM records may accelerate stylus wear and may have to be changed sooner.



ADJUSTING LED ILLUMINATION

- 1 Press and hold the **repeat** button for 3 seconds to enter illumination adjustment mode.
- 2 Single press the **repeat** button to cycle through the illumination modes:
 - HI (default):** High illumination on LED screen and LEDs.
 - LO:** Low illumination on LED screen and LEDs.
 - OFF:** LEDs off except when needed for basic operation.
- 3 The setting will save automatically after 3 seconds.

FACTORY RESET

Enter BLUETOOTH mode, press and hold the **open/close** button for 5 seconds. All source mode LEDs will flash 3 times when the factory reset is complete.
Note: Factory reset removes all paired Bluetooth devices and resets LED illumination to the factory default.

SPECIFICATIONS

GENERAL

DIMENSIONS (MAIN UNIT)	7.79" H x 16.14" W x 14.92" D 198mm H x 410mm W x 379mm D
HEIGHT WITH FEET	9.44" H / 240mm H
HEIGHT WITH LEGS	25.4" H / 645mm H
WEIGHT (MAIN UNIT)	15.74 lbs / 7.14 kg
WEIGHT WITH FEET	15.9 lbs / 7.22 kg
WEIGHT WITH LEGS	17.65 lbs / 8 kg

POWER (AC/DC ADAPTER)

INPUT	100-240V ~ 50/60Hz
OUTPUT	12V/2.0A
POWER CONSUMPTION	24.0W

TURNTABLE

SPEEDS	33-1/3, 45, & 78 RPM
REPLACEMENT STYLUS	ITNP-LC1

BLUETOOTH

BLUETOOTH VERSION	Bluetooth V5.2
SUPPORTED PROFILES	A2DP, AVRCP
OPERATING DISTANCE	10 meters (33 ft.)

INCLUDED:

Century, 45 RPM adapter, Power adapter, AA Battery,
Instruction manual, Feet, Legs* (*only with VTA-835SB)

Please note: As a result of continual improvements, the design and specifications of this product are subject to change without notice.

Bluetooth is a registered trademark of Bluetooth SIG, Inc.
Other trademarks and trade names are those of their respective owners.

Made in China.

This product has been manufactured and sold under the responsibility of Innovative Technology Electronics, LLC. Victrola is a trademark used under license by Innovative Technology Electronics, LLC. – further information at victrola-brand.com. All other products, services, companies, trademarks, trade or product names and logos referenced herein are the property of their respective owners.

SAFETY WARNINGS

Please read safety instructions and respect the following warnings before the appliance is operated:

TO PREVENT FIRE OR SHOCK HAZARD, DO NOT USE THIS PLUG WITH AN EXTENSION CORD, RECEPTACLE OR OTHER OUTLET UNLESS THE BLADES CAN BE FULLY INSERTED TO PREVENT BLADE EXPOSURE. TO PREVENT FIRE OR SHOCK HAZARD, DO NOT EXPOSE THIS APPLIANCE TO RAIN OR MOISTURE.

 <p>The lightning flash with arrowhead within an equilateral triangle is intended to alert the user to the presence of uninsulated "dangerous voltage" within the product's enclosure that may be sufficient magnitude to constitute a risk of electric shock.</p>	<p style="text-align: center;">CAUTION</p> <p style="text-align: center;">RISK OF ELECTRIC SHOCK. DO NOT OPEN.</p> <p>CAUTION: TO PREVENT RISK OF ELECTRIC SHOCK, DO NOT REMOVE COVER (OR BACK), NO USER-SERVICEABLE PARTS INSIDE. REFER SERVICING TO QUALIFIED SERVICE PROFESSIONAL.</p>	 <p>The exclamation point within an equilateral triangle is intended to alert the user to the presence of important operating and maintenance (servicing) instructions in the literature accompanying this appliance.</p>
---	--	--

- Always follow basic safety precautions when using this appliance, especially when children are present.
- Children should be supervised to ensure that they do not play with the appliance.
- Do not damage the power cord, neither do not place any heavy objects on it, do not stretch it or bend it. Also do not attach extension cables. Damage to the power cord may occur fire or electric shock.
- If the supply cord is damaged, it must be replaced by the manufacturer, a service agent or similarly qualified persons in order to avoid a hazard.
- Ensure that the unit plugged into an AC 100-240v 50/60Hz power outlet. Using higher voltage may cause the unit to malfunction or even catch fire.
- If the power plug does not fit into your outlet, do not force the plug into an electrical socket if it does not fit.
- Turn off the unit before unplugging it from the power source to completely switch it off.
- Do not disconnect or connect the power cord with wet hands. It may cause an electrical shock.
- Ensure that the main plug is always easily accessible.
- This product does not contain any parts that are serviceable by the user. In case of a fault, contact the manufacturer or authorized service department. Exposing the internal parts inside the device may endanger your life. The manufacturer's guarantee does not extend to faults caused by repairs carried out by the unauthorized third parties.
- Ensure this product is used in moderate climates only (not in tropical/subtropical climates).
- Place product on a flat, stable surface that is not subject to vibrations.
- Ensure the product and its parts are not overhanging the edge of the supporting furniture.
- To reduce the risk of fire, electric shock or damage to this product, do not expose it to direct sunlight, dust, rain and moisture. Never expose it to dripping or splashing and do not place objects filled with liquids on or near the product.
- Do not place objects filled with liquids, such as vases, on the apparatus.
- Do not install near any heat sources such as radiators, heat registers, stoves or other apparatus (including amplifiers) that produce heat.
- Do not place the product where the humidity is high and ventilation is poor
- Do not mount this product on a wall or ceiling.
- Do not place the unit near TV's, speakers and other objects that generate strong magnetic fields.
- Do not leave the unit unattended when in use.
- Allow at least 30cm clearance from the rear and the top of the unit and 5cm from each side. Always ensure that the ventilation openings are not covered with items such as newspapers, tablecloths, curtains, etc.
- NEVER let anyone, especially children, push anything into holes, slots or any other openings in the unit's casing as this could result in a fatal electric shock.
- Storms are dangerous for all electric appliances. If the main or aerial wiring is struck by lightning, the appliance might get damaged, even if it turned off. You should disconnect all the cables and connectors of the appliance before a storm.



SAFETY WARNINGS

- Excessive sound pressure from headphones can cause hearing loss.
- Do not cover ventilation openings, this is not intended to be used on soft support.



WARNING: Invisible laser radiation when open and interlock failed or defeated. Avoid direct exposure to laser beam.

This product is classified as a Class 1 laser device. Laser beams can cause eye injury. Please observe the following: Do not attempt to disassemble the device. To avoid risks, all maintenance and repair work must only be performed by the manufacturer or its customer service department.

CAUTION: Danger of explosion if battery is incorrectly replaced. Replace only with the same or an equivalent type.

MAINTENANCE:

- Unplug the power cable from the power source before cleaning the appliance.
- Use a soft clean rag to clean the outside of the unit. Never clean it with chemicals or detergent.

POWER ADAPTER:

- To disconnect the unit from the main supply, unplug the lead from the main socket.
- Only use the supplied main adapter, as failure to do this may result in a safety risk and/or damage to the unit. The main plug of power adapter is used as the disconnect device. The socket-outlet shall be installed near the equipment and shall be easily accessible.

~ AC Voltage

≡ DC Voltage

□ Class II equipment

🏠 For indoor use only

Ⓜ Energy Efficiency marking with level VI

↔ Polarity of D.C. power connector

- The shown above appears on electrical and electronic equipment (or the packaging) to remind users of this.
- Users are requested to use existing return facilities for used equipment and batteries.



FCC & IC WARNINGS

FCC STATEMENTS

Caution: the user is cautioned that changes or modifications not expressly approved by the party responsible for compliance could void the user's authority to operate the equipment.

This device complies with part 15 of the FCC rules and Innovation, Science and Economic Development Canada's license-exempt RSS standard(s). Operation is subject to the following two conditions:

- (1) This device may not cause harmful interference, and
- (2) This device must accept any interference received, including interference that may cause undesired operation.

Le présent appareil est conforme aux CNR d'Innovation, Sciences et Développement économique Canada applicables aux appareils radio exempts de licence. L'exploitation est autorisée aux deux conditions suivantes:

- (1) l'appareil ne doit pas produire de brouillage, et
- (2) L'utilisateur de l'appareil doit accepter tout brouillage radioélectrique subi, même si le brouillage est susceptible d'en compromettre le fonctionnement.

NOTE:

This equipment has been tested and found to comply with the limits for a Class B digital device, pursuant to Part 15 of the FCC Rules. These limits are designed to provide reasonable protection against harmful interference to radio communications. However, there is no guarantee that interference will not occur in a particular installation.

If this equipment does cause harmful interference to radio or television reception, which can be determined by turning the equipment off and on, the user is encouraged to try to correct the interference by one of more of the following measures:

- Reorient or relocate the receiving antenna.
- Increase the separation between the equipment and receiver.
- Connect the equipment into an outlet on a circuit different from that to which the receiver is connected.
- Consult the dealer or an experienced radio/TV technician for help.

FCC & IC RADIATION EXPOSURE STATEMENT:

This equipment complies with FCC and Canada radiation exposure limits set forth for an uncontrolled environment. This device complies with RSS247 of Industry Canada. This equipment should be installed and operated with a minimum distance of 20cm between the radiator and your body. This transmitter must not be co-located or operating in conjunction with any other antenna or transmitter.

DÉCLARATION D'IC SUR L'EXPOSITION AUX RADIATIONS:

Cet équipement est conforme aux limites d'exposition aux radiations définies par le Canada pour des environnements non contrôlés. Cet appareil se conforme à RSS247 de Canada d'Industrie. Cet équipement doit être installé et utilisé à une distance minimum de 20cm entre l'antenne et votre corps. Cet émetteur ne doit pas être installé au même endroit ni utilisé avec une autre antenne ou un autre émetteur.

LIMITED WARRANTY

Victrola is a registered trademark of Innovative Technology Electronics, LLC.

United States

For detailed information about our warranty policy and limitations visit victrola.com/pages/warranty



Outside the U.S., Canada, and US Territories

The Warranty on this product shall comply with applicable law when sold to a consumer outside of the United States, Canada, and US Territories. To obtain any applicable warranty service, please contact the dealer from which you purchased the product, or the distributor that supplied the product, with your original receipt.

Canada and US Territories

The Warranty on this product shall comply with applicable law when sold to a consumer in Canada or a US Territory. To obtain any applicable warranty service, please contact the dealer from which you purchased the product, or the distributor that supplied the product, with your original receipt.

If assistance from the dealer from which it was purchased is not possible, you may contact our customer service for warranty assistance at victrola.com/contact.

CUSTOMER SUPPORT

VICTROLA.COM/PAGES/CUSTOMER-CARE

support@victrola.com

(877)483-2497