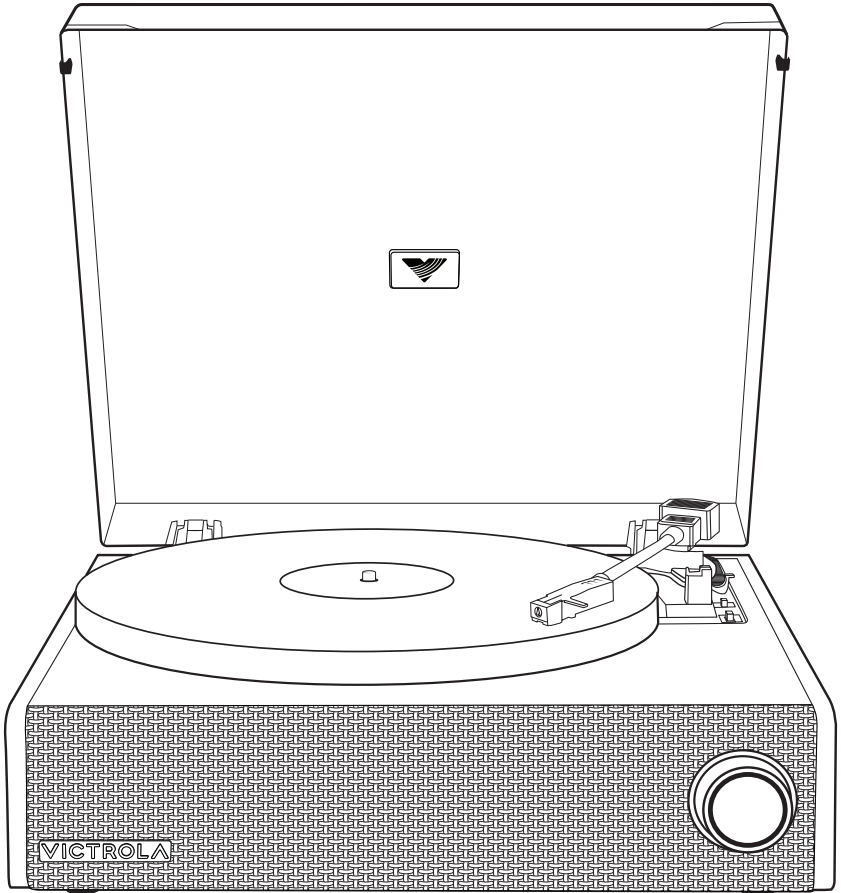


VICTROLA



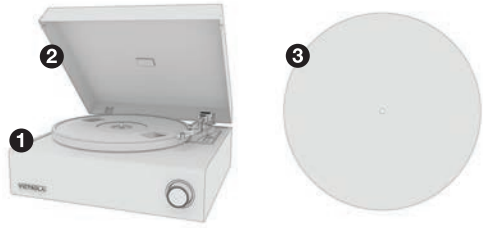
EASTWOOD *LP*

INSTRUCTION MANUAL
VTA-78

1 UNPACK

LOCATE THE FOLLOWING ITEMS

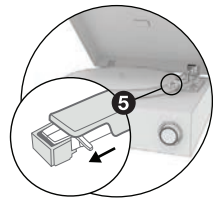
- 1 Record player
- 2 Dust cover
- 3 Slipmat
- 4 Power adapter



2 PREPARE TURNTABLE

PLACE TURNTABLE ON A FLAT AND LEVEL SURFACE

- 1 Remove all packaging materials.
 - 2 Plug in power adapter
 - 3 Place the slipmat on the platter.
 - 4 Remove tonearm twist tie.
 - 5 Remove tape and clear stylus cover.
- Note: Gently pull stylus cover forward to remove.*



3 GETTING STARTED

MULTI-FUNCTION KNOB

- 1 Press and hold to power ON / OFF.
- 2 Single press to switch modes:
VINYL
VINYLSTREAM™ (BLUETOOTH OUTPUT)
BLUETOOTH (INPUT)
Note: When powering back ON, the turntable will return to the last used output mode.
- 3 Rotate knob to adjust volume.



**MULTI-FUNCTION
KNOB**

4

PLAYBACK MODES

VINYL MODE - INTERNAL SPEAKERS:

- 1 In VINYL mode, the volume of the internal speakers is controlled by rotating the multi-function knob.

VINYL MODE - RCA OUTPUT:

- 1 Connect the turntable to external speakers using an RCA cable (not included).
RED PLUG - Insert into the **RED (RIGHT) JACK**
WHITE PLUG - Insert into the **WHITE (LEFT) JACK**
- 2 Lower volume of the internal speakers and control volume from the external speakers.

VINYL MODE - HEADPHONES:

- 1 Use the headphone output jack on the back of the unit to connect headphones / earbuds. Lower the volume before connecting headphones and increase as needed.
-

VINYLSTREAM MODE - PAIR BLUETOOTH SPEAKER OR HEADPHONES:

- 1 Enter VINYLSTREAM (Bluetooth output) mode, the turntable will automatically enter pairing mode. LED: Flashes white.
 - 2 Make sure your Bluetooth device is in pairing mode.
 - 3 Turntable will automatically pair to your Bluetooth device.
 - 4 Once paired, the unit will say “*connected*” and LED will turn solid white.
Note: Volume is controlled by Bluetooth device.
-

BLUETOOTH MODE - PAIR BLUETOOTH DEVICE:

- 1 Enter BLUETOOTH mode, the turntable will automatically enter pairing mode. LED: Flashes blue.
- 2 On your device, turn on Bluetooth and select “**Victrola Eastwood LP**” in the available device list.
- 3 Once paired, the unit will say “*connected*” and LED will turn solid white.

5 PLAYING A RECORD

BASIC OPERATION

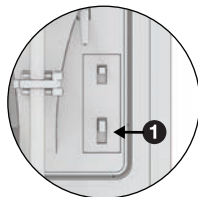
- 1 Unlatch the tonearm.
- 2 Raise the tonearm using the lift lever.
- 3 Use the finger lift to align the stylus over the record.
- 4 Lower the tonearm using the lift lever to begin playing.

Note: At the end of the record, turntable will automatically stop spinning (if auto-stop is enabled). Use the lift lever to return the tonearm to the resting position.



ADJUSTING RECORD SPEED

- 1 Use the speed switch next to tonearm to adjust the record speed between **33 1/3 RPM (default)**, **45 RPM**, and **78 RPM**.

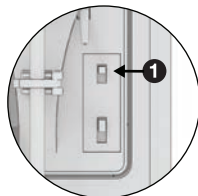


AUTO-STOP OPERATION

- 1 Use the auto-stop switch next to tonearm to enable & disable the auto-stop function.

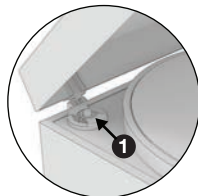
AUTO-STOP Enabled (default): Turntable will only spin when tonearm is located over record grooves.

AUTO-STOP Disabled: Turntable will spin at all times when in VINYL or VINYLSTREAM mode.



PLAYING A 7" RECORD

- 1 Locate the **45 RPM** adapter.
- 2 Place the adapter over the center spindle.
- 3 Select correct speed.
- 4 Place record over adapter, begin playback.



REMOVING THE DUST COVER

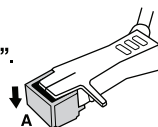
- 1 With the dust cover open, firmly grasp both sides of the dust cover near the hinges.
- 2 Pull the dust cover straight up and away from the turntable, hinges will come off with dust cover.



REPLACING THE STYLUS

REMOVING THE STYLUS FROM THE TONEARM:

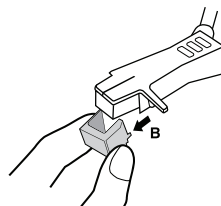
- 1 Place your fingers at the tip of the stylus and push down to the direction "A".
WARNING: When applying force to stylus, too much may damage or break the cartridge.



- 2 Pull the stylus out toward the direction "B".

INSTALLING THE STYLUS: (Replacement Stylus # ATN3600L)

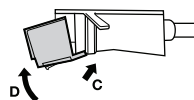
- 1 Hold the tip of the stylus and insert the other edge by pressing toward direction "C".
- 2 Push the stylus up toward direction "D" until it locks at the tip.



CAUTION:

- Do not bend or force the stylus into the cartridge.
- Do not touch the stylus needle to avoid injury to your hand.
- Turn off the unit's power before you replace the stylus.
- Keep out of reach of children.

NOTE: The stylus should last about 300 hours under normal use. It is recommended that the stylus be replaced as soon as you notice a change in sound quality. 78 RPM records may accelerate stylus wear and may have to be changed sooner.



FACTORY RESET

Quickly press the multi-function button 3 times to factory reset the turntable. This will remove any previously paired Bluetooth devices. The LED will flash blue and turntable will power off.

SPECIFICATIONS

GENERAL

DIMENSIONS 5.79" H x 14.69" W x 13.9" D
147mm H x 373mm W x 353mm D
WEIGHT 9.7 lbs / 4.4 kg

POWER

INPUT 100-240V ~ 50/60Hz
OUTPUT 12V/2.0A
CONSUMPTION 24W

TURNTABLE

SPEEDS 33-1/3, 45, & 78 RPM
REPLACEMENT STYLUS ATN3600L

BLUETOOTH

BLUETOOTH VERSION Bluetooth V5.3
SUPPORTED PROFILES A2DP, AVRCP
OPERATING DISTANCE 10 meters (33 ft.)

INCLUDED:

Eastwood LP, Dust cover, Slipmat, 45 RPM adapter,
Power adapter, Instruction manual

Please note: As a result of continual improvements, the design and specifications of this product are subject to change without notice.

Bluetooth is a registered trademark of Bluetooth SIG, Inc. Other trademarks and trade names are those of their respective owners.

Made In China.

SAFETY WARNINGS

Please read safety instructions and respect the following warnings before the appliance is operated:

TO PREVENT FIRE OR SHOCK HAZARD, DO NOT USE THIS PLUG WITH AN EXTENSION CORD, RECEPTACLE OR OTHER OUTLET UNLESS THE BLADES CAN BE FULLY INSERTED TO PREVENT BLADE EXPOSURE. TO PREVENT FIRE OR SHOCK HAZARD, DO NOT EXPOSE THIS APPLIANCE TO RAIN OR MOISTURE.



- Always follow basic safety precautions when using this appliance, especially when children are present.
- Children should be supervised to ensure that they do not play with the appliance.
- Do not damage the power cord, neither do not place any heavy objects on it, do not stretch it or bend it. Also do not attach extension cables. Damage to the power cord may occur fire or electric shock.
- If the supply cord is damaged, it must be replaced by the manufacturer, a service agent or similarly qualified persons in order to avoid a hazard.
- Ensure that the unit plugged into an AC 100-240v 50/60Hz power outlet. Using higher voltage may cause the unit to malfunction or even catch fire.
- If the power plug does not fit into your outlet, do not force the plug into an electrical socket if it does not fit.
- Turn off the unit before unplugging it from the power source to completely switch it off.
- Do not disconnect or connect the power cord with wet hands. It may cause an electrical shock.
- Ensure that the main plug is always easily accessible.
- This product does not contain any parts that are serviceable by the user. In case of a fault, contact the manufacturer or authorized service department. Exposing the internal parts inside the device may endanger your life. The manufacturer's guarantee does not extend to faults caused by repairs carried out by the unauthorized third parties.
- Ensure this product is used in moderate climates only (not in tropical/subtropical climates).
- Place product on a flat, stable surface that is not subject to vibrations.
- Ensure the product and its parts are not overhanging the edge of the supporting furniture.
- To reduce the risk of fire, electric shock or damage to this product, do not expose it to direct sunlight, dust, rain and moisture. Never expose it to dripping or splashing and do not place objects filled with liquids on or near the product.
- Do not place objects filled with liquids, such as vases, on the apparatus.
- Do not install near any heat sources such as radiators, heat registers, stoves or other apparatus (including amplifiers) that produce heat.
- Do not place the product where the humidity is high and ventilation is poor
- Do not mount this product on a wall or ceiling.
- Do not place the unit near TV's, speakers and other objects that generate strong magnetic fields.
- Do not leave the unit unattended when in use.
- Allow at least 30cm clearance from the rear and the top of the unit and 5cm from each side. Always ensure that the ventilation openings are not covered with items such as newspapers, tablecloths, curtains, etc.
- NEVER let anyone, especially children, push anything into holes, slots or any other openings in the unit's casing as this could result in a fatal electric shock.



SAFETY WARNINGS

- Storms are dangerous for all electric appliances. If the main or aerial wiring is struck by lightning, the appliance might get damaged, even if it turned off. You should disconnect all the cables and connectors of the appliance before a storm.
- Excessive sound pressure from headphones can cause hearing loss.
- Do not cover ventilation openings, this is not intended to be used on soft support.

MAINTENANCE:

- Unplug the power cable from the power source before cleaning the appliance.
- Use a soft clean rag to clean the outside of the unit. Never clean it with chemicals or detergent.

POWER ADAPTER:

- To disconnect the unit from the main supply, unplug the lead from the main socket.
- Only use the supplied main adapter, as failure to do this may result in a safety risk and/or damage to the unit. The main plug of power adapter is used as the disconnect device. The socket-outlet shall be installed near the equipment and shall be easily accessible.

- ~ AC Voltage
- ≡ DC Voltage
- Class II equipment
- 🏠 For indoor use only
- Ⓜ Energy Efficiency marking with level VI
- ↔ Polarity of D.C. power connector

- The shown above appears on electrical and electronic equipment (or the packaging) to remind users of this.
- Users are requested to use existing return facilities for used equipment and batteries.



FCC & IC WARNINGS

FCC STATEMENTS

Caution: the user is cautioned that charges or modifications not expressly approved by the party responsible for compliance could void the user's authority to operate the equipment.

This device complies with part 15 of the FCC rules and Innovation, Science and Economic Development Canada's license-exempt RSS standard(s). Operation is subject to the following two conditions:

- (1) This device may not cause harmful interference, and
- (2) This device must accept any interference received, including interference that may cause undesired operation.

Le présent appareil est conforme aux CNR d'Innovation, Sciences et Développement économique Canada applicables aux appareils radio exempts de licence. L'exploitation est autorisée aux deux conditions suivantes:

- (1) l'appareil ne doit pas produire de brouillage, et
- (2) L'utilisateur de l'appareil doit accepter tout brouillage radioélectrique subi, même si le brouillage est susceptible d'en compromettre le fonctionnement.

NOTE:

This equipment has been tested and found to comply with the limits for a Class B digital device, pursuant to Part 15 of the FCC Rules. These limits are designed to provide reasonable protection against harmful interference to radio communications. However, there is no guarantee that interference will not occur in a particular installation.

If this equipment does cause harmful interference to radio or television reception, which can be determined by turning the equipment off and on, the user is encouraged to try to correct the interference by one of more of the following measures:

- Reorient or relocate the receiving antenna.
- Increase the separation between the equipment and receiver.
- Connect the equipment into an outlet on a circuit different from that to which the receiver is connected.
- Consult the dealer or an experienced radio/TV technician for help.

FCC & IC RADIATION EXPOSURE STATEMENT:

This equipment complies with FCC and Canada radiation exposure limits set forth for an uncontrolled environment. This equipment should be installed and operated with a minimum distance of 20cm between the radiator and your body. This transmitter must not be co-located or operating in conjunction with any other antenna or transmitter.

DÉCLARATION D'IC SUR L'EXPOSITION AUX RADIATIONS:

Cet équipement est conforme aux limites d'exposition aux radiations définies par le Canada pour des environnements non contrôlés. Cet équipement doit être installé et utilisé à une distance minimum de 20cm entre l'antenne et votre corps. Cet émetteur ne doit pas être installé au même endroit ni utilisé avec une autre antenne ou un autre émetteur.

LIMITED WARRANTY

Victrola is a registered trademark of Innovative Technology Electronics, LLC.

United States

For detailed information about our warranty policy and limitations visit victrola.com/pages/warranty



Outside the U.S., Canada, and US Territories

The Warranty on this product shall comply with applicable law when sold to a consumer outside of the United States, Canada, and US Territories. To obtain any applicable warranty service, please contact the dealer from which you purchased the product, or the distributor that supplied the product, with your original receipt.

Canada and US Territories

The Warranty on this product shall comply with applicable law when sold to a consumer in Canada or a US Territory. To obtain any applicable warranty service, please contact the dealer from which you purchased the product, or the distributor that supplied the product, with your original receipt.

If assistance from the dealer from which it was purchased is not possible, you may contact our customer service for warranty assistance at victrola.com/contact.

CUSTOMER SUPPORT

VICTROLA.COM/PAGES/CUSTOMER-CARE

support@victrola.com

(877)483-2497