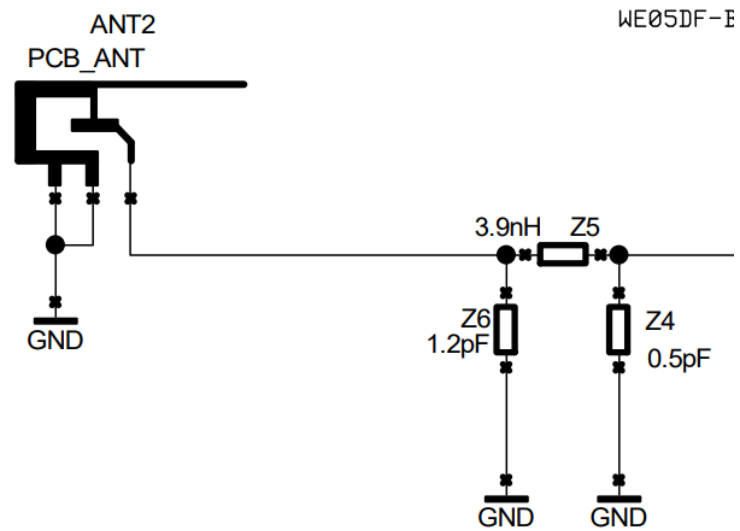


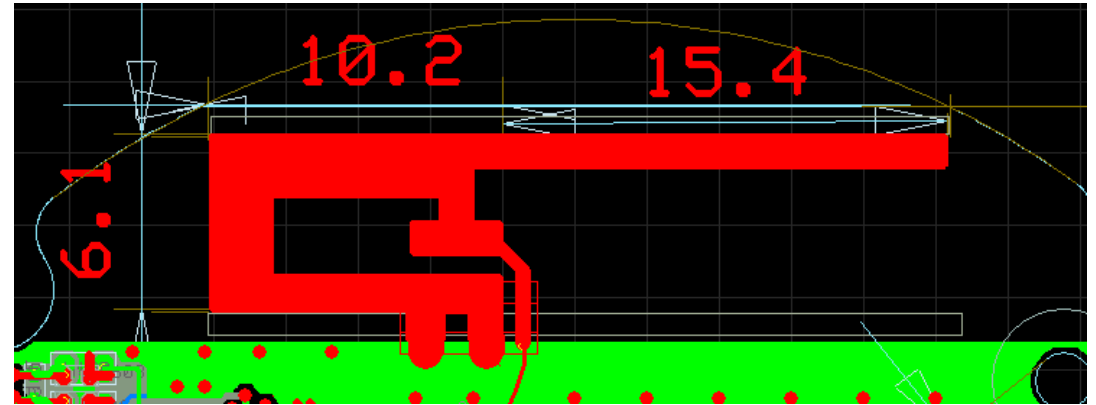
Antenna specification

Frequency Range (MHz)	2400~2500
Band Width (MHz)	100
Impedance (Ω)	50
VSWR	2.60 MAX
Return Loss (dB)	-14.59
Peak Gain (dBi)	0
Polarization	Linear Vertical
Antenna Material	PCB
Operating Temp ($^{\circ}\text{C}$)	-20~65
Storage Temp ($^{\circ}\text{C}$)	-30~75

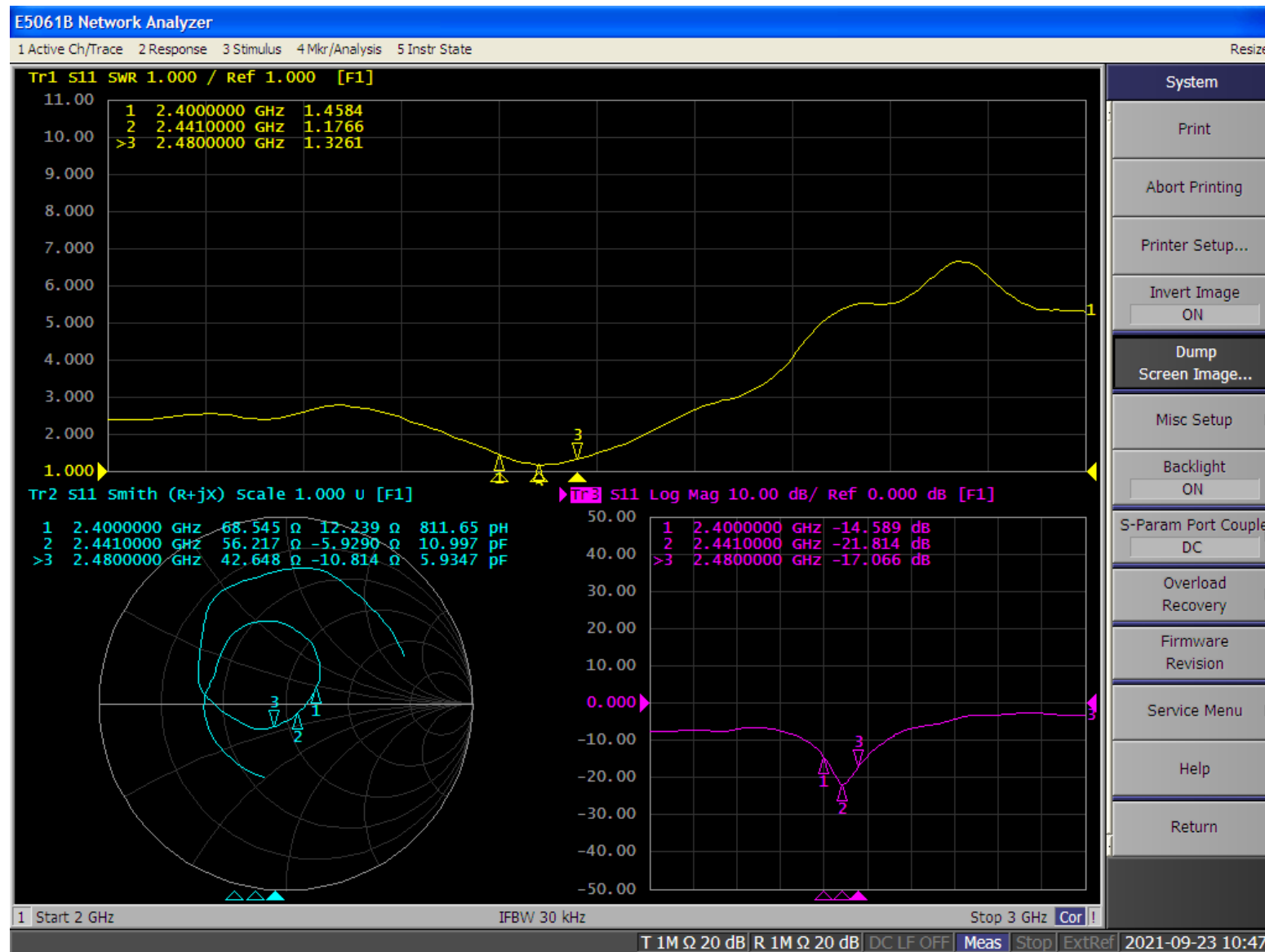
1.Type , sizes

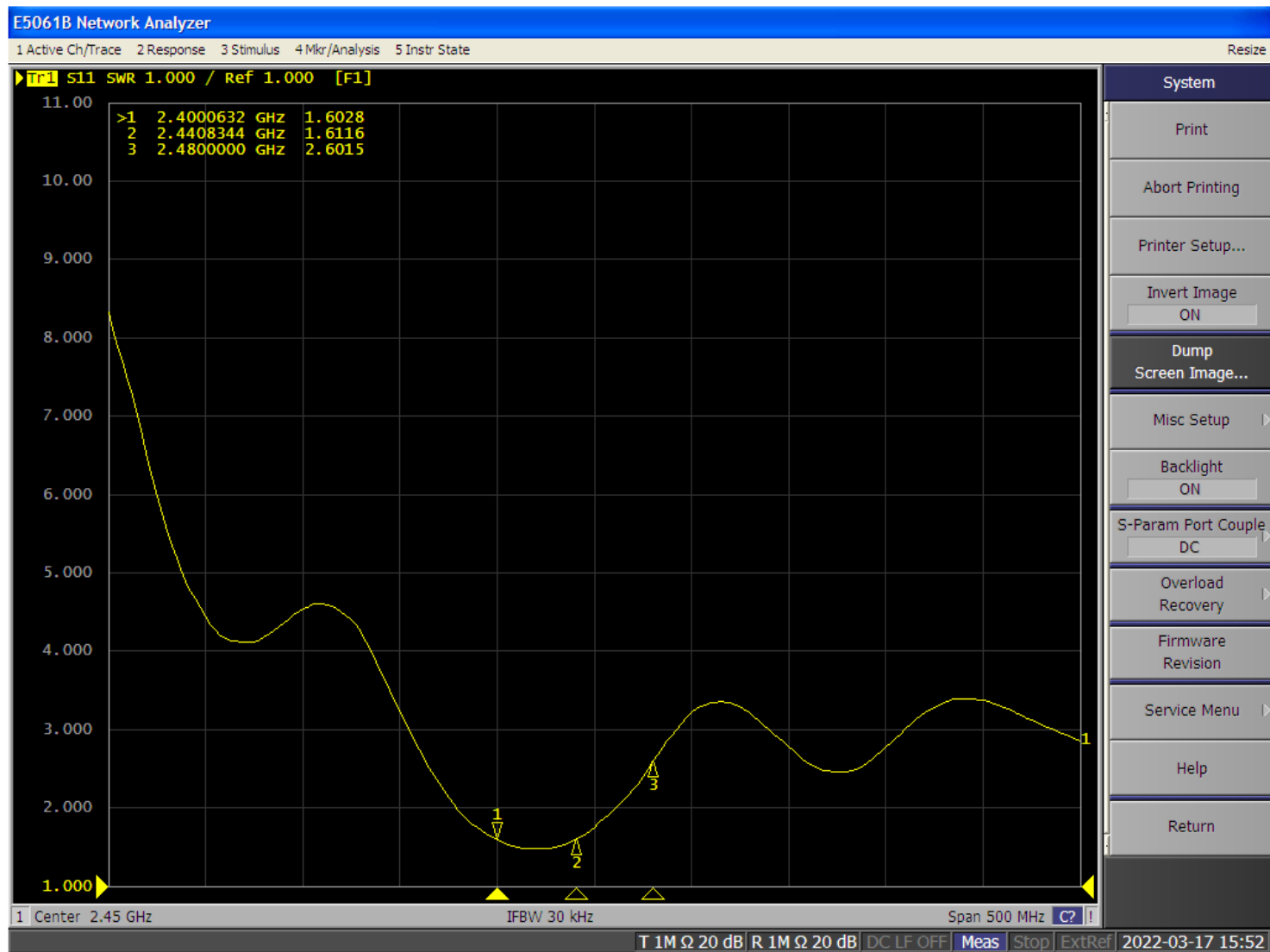


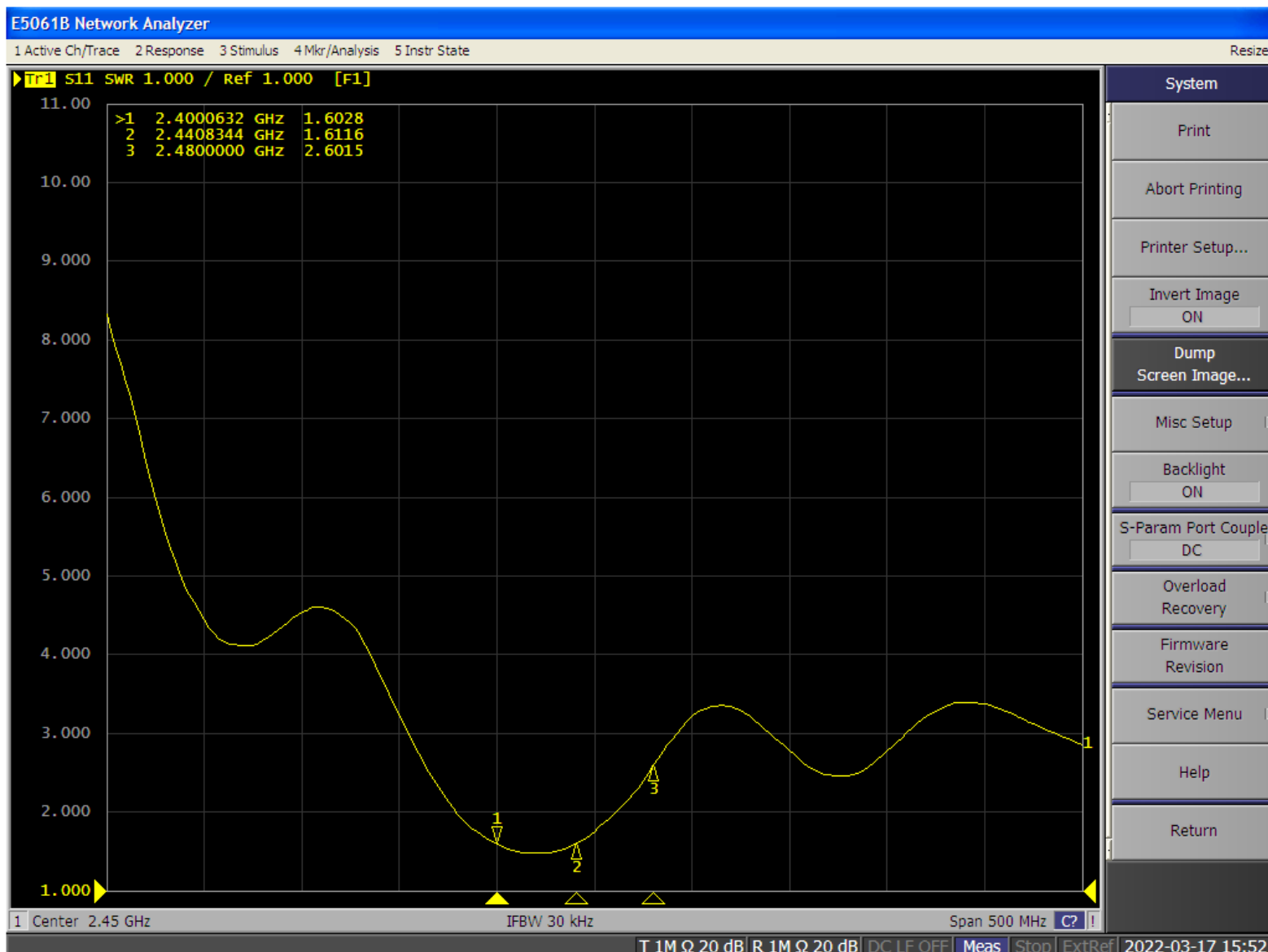
Unit: mm

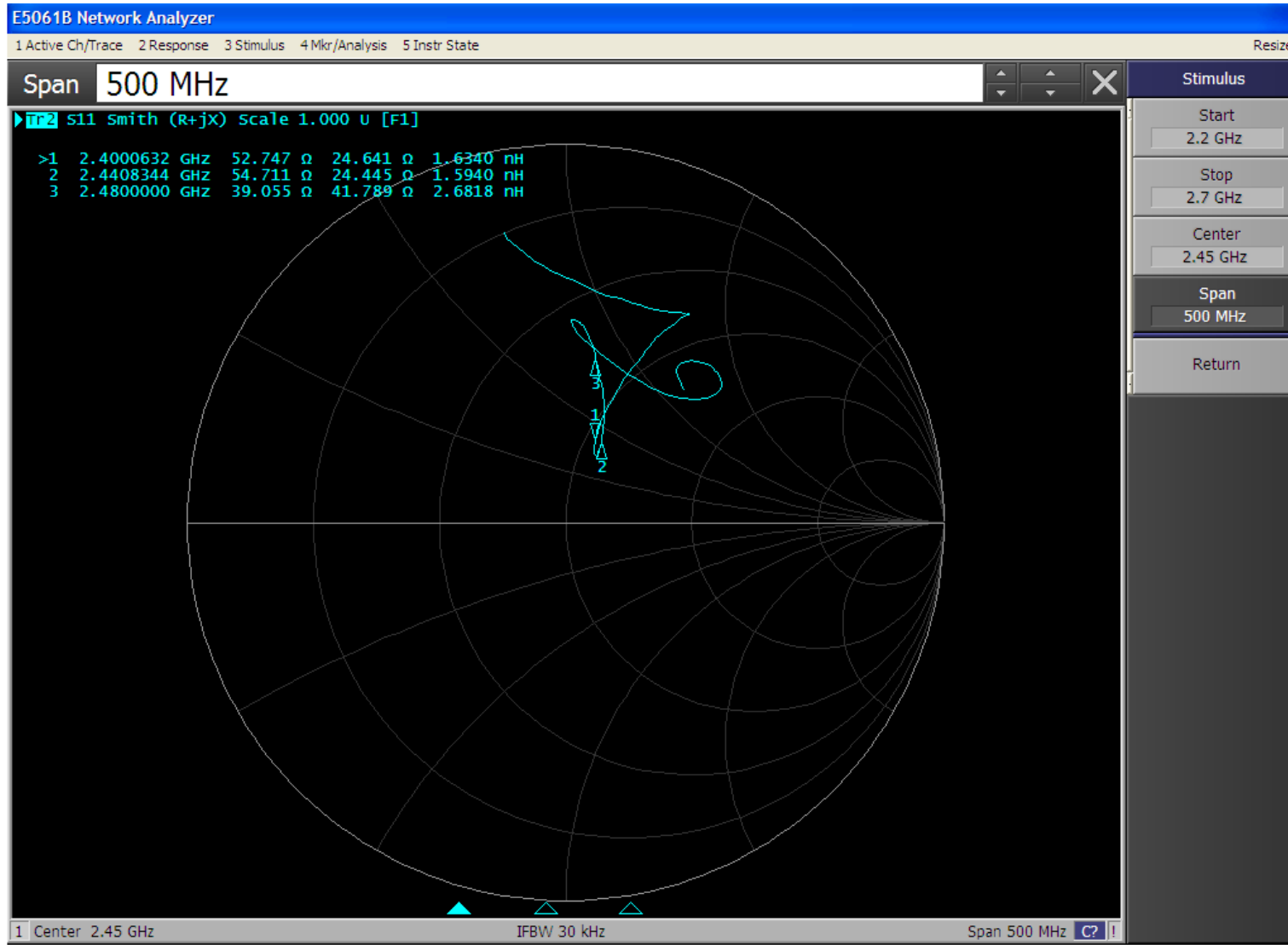


2. Antenna VSWR , return lose test and TX power table





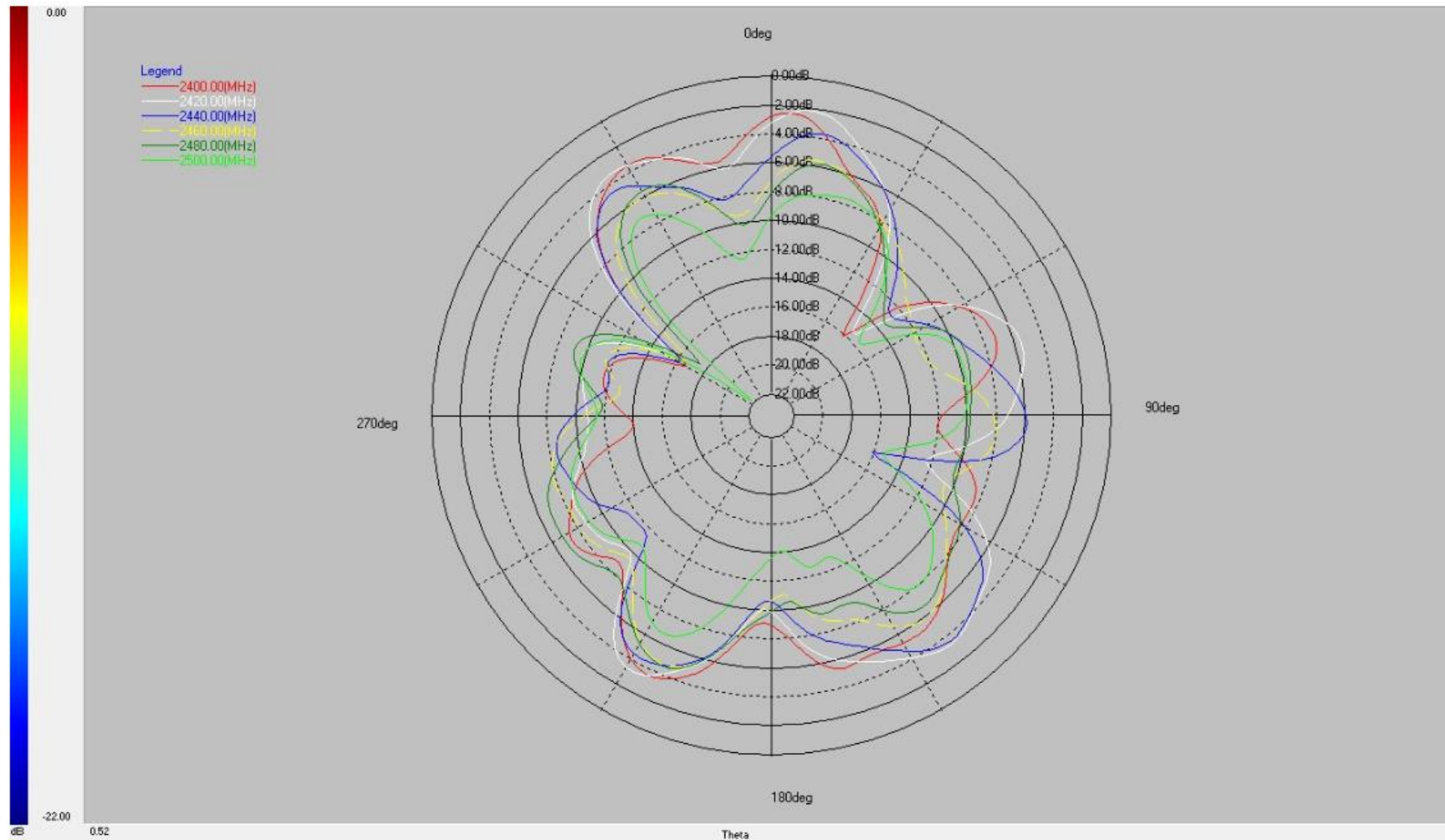




3. Antenna Efficiency , Gain table

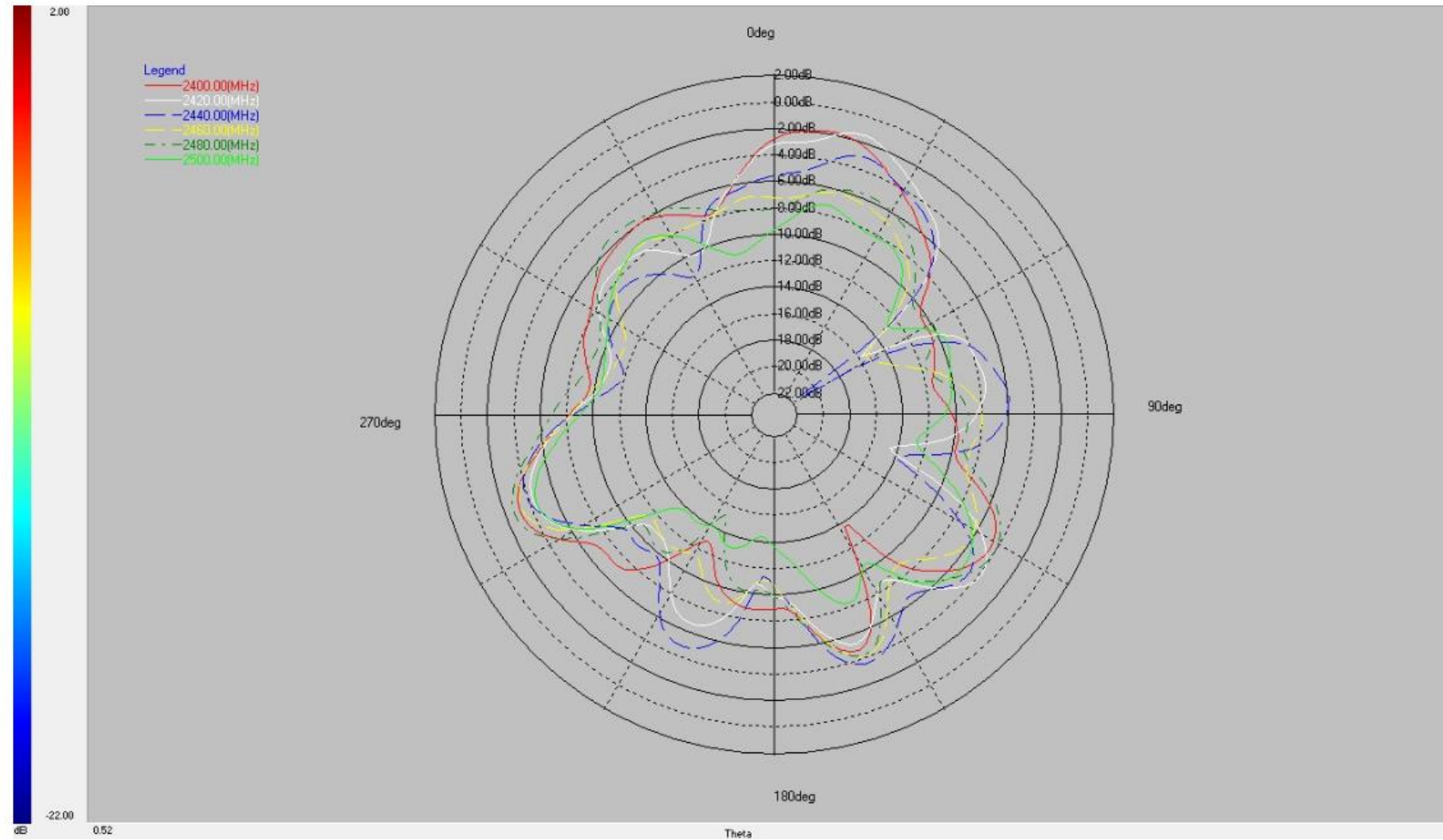
Freq_MHz	Gain(dBi)	Efficiency (dB)	Efficiency_ (%)
2400	-0.1	2.51	29.51%
2410	-0.11	1.89	28.32%
2420	-0.14	1.51	27.65%
2430	-0.12	1.43	29.97%
2440	0	1.01	26.89%
2450	-0.18	0.90	25.13%
2460	-0.16	0.69	25.87%
2470	-0.23	0.10	23.71%
2480	-0.33	0.18	24.51%
2490	-0.38	0.11	23.12%
2500	-0.36	0.23	23.43%

4. Phi=0



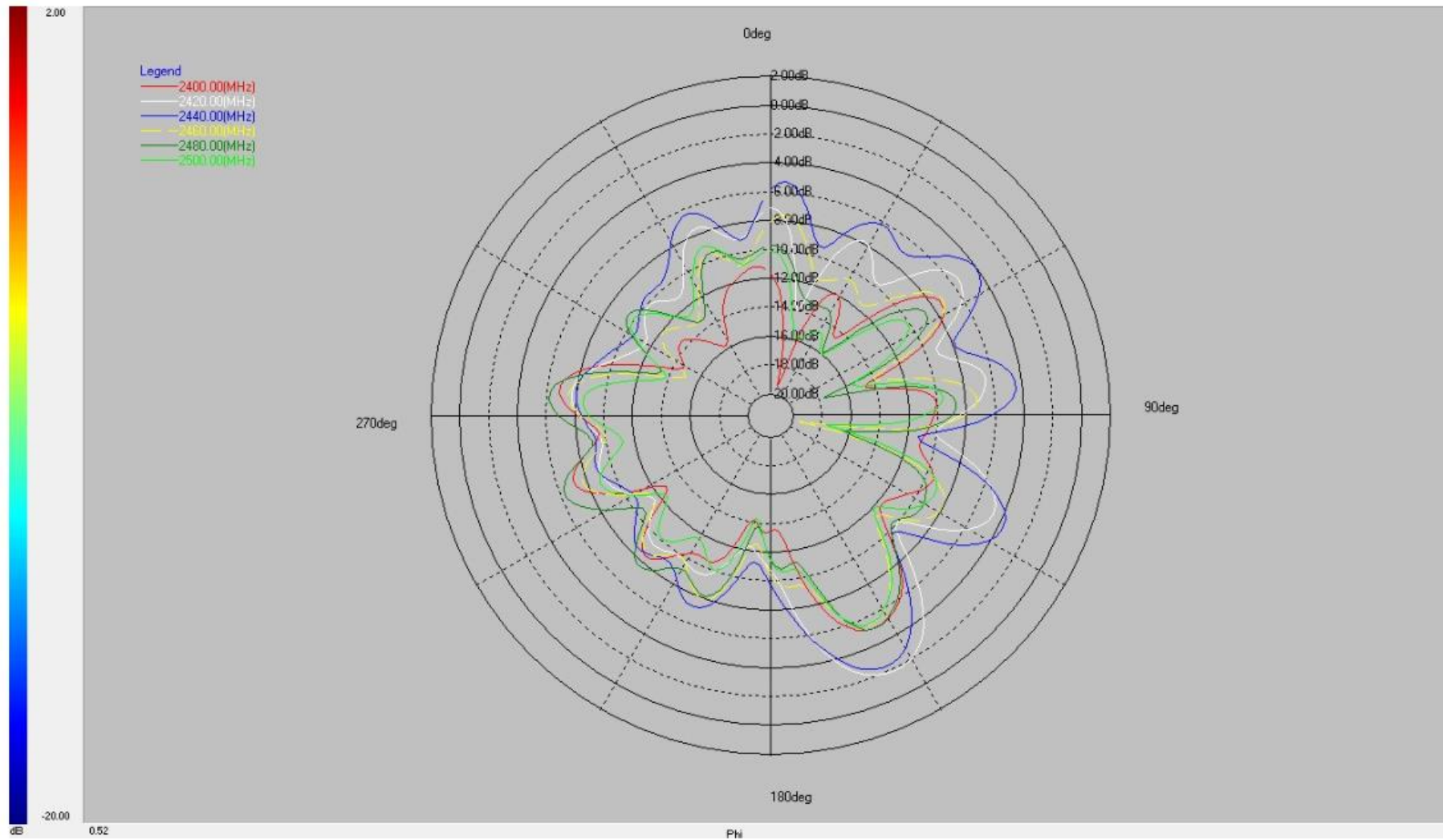
Phi=0

4. Phi=90



Phi=90

4. Theta=90



Theta=90

THANK YOU